

## Product datasheet for RC226698

### PNPLA4 (NM\_001142389) Human Tagged ORF Clone

#### Product data:

Product Type:	Expression Plasmids
Product Name:	PNPLA4 (NM_001142389) Human Tagged ORF Clone
Tag:	Myc-DDK
Symbol:	PNPLA4
Synonyms:	DXS1283E; GS2; iPLA2eta
Mammalian Cell Selection:	Neomycin
Vector:	pCMV6-Entry (PS100001)
E. coli Selection:	Kanamycin (25 ug/mL)
ORF Nucleotide Sequence:	>RC226698 ORF sequence Red=Cloning site Blue=ORF Green=Tags(s)

TTTTGTAATACGACTCACTATAGGGCGGCCGGAATTCGTCGACTGGATCCGGTACCGAGGAGATCTGCC  
GCC**CGATCGCC**

ATGAAGCACATCAACCTATCATTTCAGCGTGTGGATTCTGGGCATTTACCACTGGGGGCAGCATCTG  
CACTTTGCAGACATGGCAAAAACTTGTGAAGGATGTCAAAGCCTTCGCTGGGGCGTCTGCGGGATCGTT  
GGGTGCTTCTGTTCTGCTAACAGCACCAGAAAAATAGAGGAATGTAACCAATTTACCTACAAGTTTGCC  
GAAGAAATCAGAAGGCAGTCTTTCGGGGCAGTAACGCCCGTTATGACTTCATGGCCCGACTAAGAAGTG  
GGATGGAGTCGATTCTTCTCCAGCGCTCACGAGCTGGCCAGAACCGACTGCACGTATCCATCACCAA  
CGCCAAAACAGAGAAAACTCACTTAGTCTCCACTTTTTCTCCAGGGAGGGCCTCATTAAGTCTCCTA  
GCCAGCAGTTTTGTGCCATTTATGCAGGACTGAAGCTAGTGGAATACAAAGGGCAGAAGTGGGTGGACG  
GAGGCCTACCAACGCTCTTCCATCCTGCCCGTCGGCCGGACAGTAACCATCTCCCCCTTCAGTGGACG  
ACTGGACATCTCCCCGAGGACAAAGGGCAGCTAGATCTGTATGTTAATATCGCCAAGCAGGATATCATG  
TTGTCCCTGGCAAACCTGGTGAGACTCAACCAAGCCCTTTTTCCCCAAGCAAGAGGAAAATGGAATCTT  
TGATCAGTGTGGTTTTGATGACACTGTTAAGTTTTACTTAAAGAAAATTGTTTTGAA

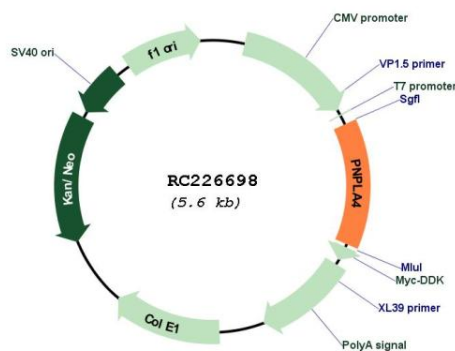
**ACGCGT**ACGCGGCCGCTCGAGCAGAAACTCATCTCAGAAGAGGATCTGGCAGCAAATGATATCCTGGATT  
ACAAGGATGACGACGATAAGGTTTAA



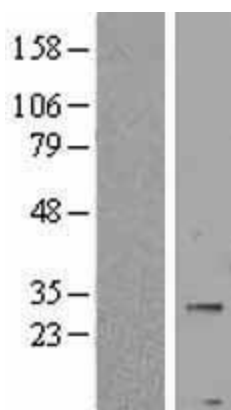
[View online »](#)



<b>Components:</b>	The ORF clone is ion-exchange column purified and shipped in a 2D barcoded Matrix tube containing 10ug of transfection-ready, dried plasmid DNA (reconstitute with 100 ul of water).
<b>Reconstitution Method:</b>	<ol style="list-style-type: none"> <li>1. Centrifuge at 5,000xg for 5min.</li> <li>2. Carefully open the tube and add 100ul of sterile water to dissolve the DNA.</li> <li>3. Close the tube and incubate for 10 minutes at room temperature.</li> <li>4. Briefly vortex the tube and then do a quick spin (less than 5000xg) to concentrate the liquid at the bottom.</li> <li>5. Store the suspended plasmid at -20°C. The DNA is stable for at least one year from date of shipping when stored at -20°C.</li> </ol>
<b>RefSeq:</b>	<u>NM_001142389.1, NP_001135861.1</u>
<b>RefSeq Size:</b>	2752 bp
<b>RefSeq ORF:</b>	762 bp
<b>Locus ID:</b>	8228
<b>UniProt ID:</b>	<u>P41247</u>
<b>Cytogenetics:</b>	Xp22.31
<b>Protein Pathways:</b>	Retinol metabolism
<b>MW:</b>	27.9 kDa
<b>Gene Summary:</b>	This gene encodes a member of the patatin-like family of phospholipases. The encoded enzyme has both triacylglycerol lipase and transacylase activities and may be involved in adipocyte triglyceride homeostasis. Alternate splicing results in multiple transcript variants. A pseudogene of this gene is found on chromosome Y. [provided by RefSeq, Feb 2010]

**Product images:**


Circular map for RC226698



Western blot validation of overexpression lysate (Cat# [LY428061]) using anti-DDK antibody (Cat# [TA50011-100]). Left: Cell lysates from untransfected HEK293T cells; Right: Cell lysates from HEK293T cells transfected with RC226698 using transfection reagent MegaTran 2.0 (Cat# [TT210002]).