

## Product datasheet for **RC226686**

### COLCA2 (NM\_001136105) Human Tagged ORF Clone

#### Product data:

Product Type:	Expression Plasmids
Tag:	Myc-DDK
Symbol:	COLCA2
Synonyms:	C11orf93; CASC13; LOH11CR1G
Mammalian Cell Selection:	Neomycin
Vector:	pCMV6-Entry (PS100001)
E. coli Selection:	Kanamycin (25 ug/mL)

**ORF Nucleotide Sequence:** >RC226686 representing NM\_001136105  
Red=Cloning site Blue=ORF Green=Tags(s)

TTTTGTAATACGACTCACTATAGGGCGGCCGGAATTCGTCGACTGGATCCGGTACCGAGGAGATCTGCC  
GCCGCGATCGCC

ATGCACCCGGAGCCTTTGCTCAATTCACACAAAGTGCTCCACACCATTTCACAGACAGCTTCAGGCCA  
CCCCCTTTCTGCTTTAACCAGAGCCTGATCCAGGATCACCTTCAAATTCCTCCATTCTCTCTGGCTCCTT  
AGACTACAGTTACTCGCAGTGCAGCTGCCTTCATATGCTCCAGAGAATTACAATCCCCTGCTTCTCTG  
GACACCAGAACCTGTGGCTACCCCCAGAAGACCATTCTACCAACACTTGCTCCTCACAGCCAGTACA  
GCTGCTTCTCCTCGGCCACCACCTCCATCTGCTACTGCGCATCGTGTGAGGCAGAGGACTTGGATGCTCT  
CCAGGCAGCAGAGTACTTCTACCCGAGCAGACTGTGTGGACTTTGCCCCCTCAGCAGCCGCCACCAGT  
GATTTCTATAAGAGGGAACAACTGTGACATCTGCTATAGT

ACGCGTACGCGGCCGCTCGAGCAGAACTCATCTCAGAAGAGGATCTGGCAGCAATGATATCCTGGATT  
ACAAGGATGACGACGATAAGGTTTAA

**Protein Sequence:** >RC226686 representing NM\_001136105  
Red=Cloning site Green=Tags(s)

MHPELLNSTQSAPHHPDSFQATPFCFNQSLIPGSPSNSSILSGSLDYSYSPVQLPSYAPENYNPASL  
DTRTCGYPPEDHSYQHLSSHAQYSCFSSATTICYCASCEAEDLDALQAAEYFYPSTDCVDFAPSAAATS  
DFYKRETNCDICYS

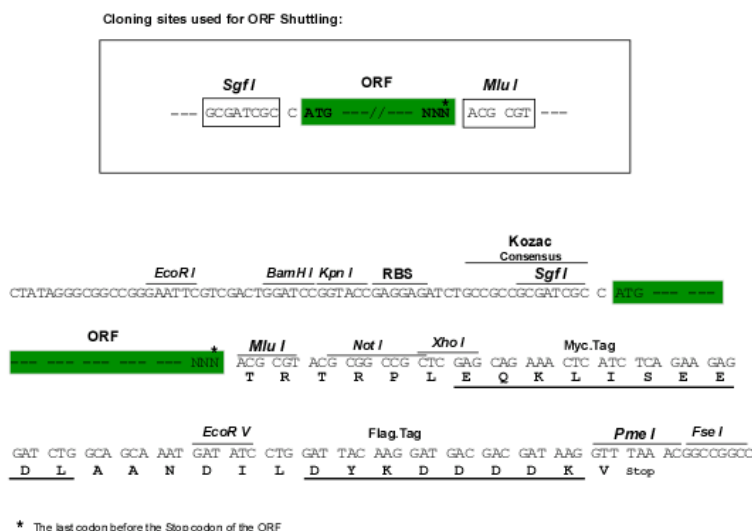
TRTRPLEQKLISEEDLAANDILDYKDDDDKV

**Chromatograms:** [https://cdn.origene.com/chromatograms/mg8003\\_d02.zip](https://cdn.origene.com/chromatograms/mg8003_d02.zip)



**Restriction Sites:** SgfI-MluI

### Cloning Scheme:



ACCN: NM\_001136105

**ORF Size:** 462 bp

**OTI Disclaimer:** The molecular sequence of this clone aligns with the gene accession number as a point of reference only. However, individual transcript sequences of the same gene can differ through naturally occurring variations (e.g. polymorphisms), each with its own valid existence. This clone is substantially in agreement with the reference, but a complete review of all prevailing variants is recommended prior to use. [More info](#)

**OTI Annotation:** This clone was engineered to express the complete ORF with an expression tag. Expression varies depending on the nature of the gene.

**Components:** The ORF clone is ion-exchange column purified and shipped in a 2D barcoded Matrix tube containing 10ug of transfection-ready, dried plasmid DNA (reconstitute with 100 ul of water).

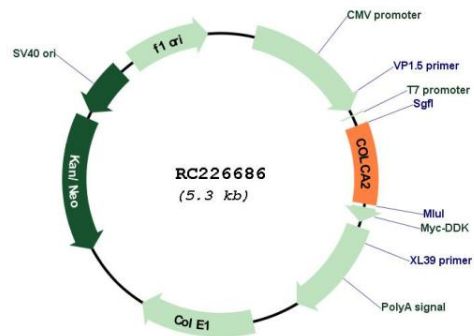
**Reconstitution Method:**

1. Centrifuge at 5,000xg for 5min.
2. Carefully open the tube and add 100ul of sterile water to dissolve the DNA.
3. Close the tube and incubate for 10 minutes at room temperature.
4. Briefly vortex the tube and then do a quick spin (less than 5000xg) to concentrate the liquid at the bottom.
5. Store the suspended plasmid at -20°C. The DNA is stable for at least one year from date of shipping when stored at -20°C.

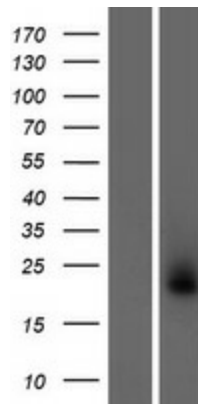
**Note:** Plasmids are not sterile. For experiments where strict sterility is required, filtration with 0.22µm filter is required.

RefSeq: [NM\\_001136105.2](#)  
 RefSeq ORF: 465 bp  
 Locus ID: 120376  
 UniProt ID: [A8K830](#)  
 Cytogenetics: 11q23.1  
 MW: 16.7 kDa

**Product images:**



Circular map for RC226686



Western blot validation of overexpression lysate (Cat# [LY427799]) using anti-DDK antibody (Cat# [TA50011-100]). Left: Cell lysates from un-transfected HEK293T cells; Right: Cell lysates from HEK293T cells transfected with RC226686 using transfection reagent MegaTran 2.0 (Cat# [TT210002]).