

## Product datasheet for **RC226682**

### DAGLB (NM\_001142936) Human Tagged ORF Clone

#### Product data:

Product Type:	Expression Plasmids
Product Name:	DAGLB (NM_001142936) Human Tagged ORF Clone
Tag:	Myc-DDK
Symbol:	DAGLB
Synonyms:	DAGLBETA; KCCR13L
Mammalian Cell Selection:	Neomycin
Vector:	pCMV6-Entry (PS100001)
E. coli Selection:	Kanamycin (25 ug/mL)



[View online »](#)

**ORF Nucleotide Sequence:**

>RC226682 representing NM\_001142936  
 Red=Cloning site Blue=ORF Green=Tags(s)

TTTTGTAATACGACTCACTATAGGGCGGCCGGAATTCGTCGACTGGATCCGGTACCGAGGAGATCTGCC  
 GCC**CGGATCGCC**

ATGCCGGGATGGTACTCTTCGGCCGGCGCTGGGCCATCGCCAGCGACGACTTGGTCTTCCAGGGTTCT  
 TCGAGCTGGTCGTGCGAGTGCTGTGGTGGATTGGCATTCTGACGTTGTATCTCATGCACAGAGGAAAGCT  
 GGACTGTGCTGGTGGAGCCTTGCTCAGCAGTTACTTGATCGTCCTCATGATTCTCTGGCAGTTGTCATA  
 TGTACTGTGTCAGCCATCATGTGTGTCAGCATGAGAGGAACGATTTGTAACCTGGACCGCGGAAGTCTA  
 TGTCTAAGCTGCTTACATCCGCTGGCGCTGTTTTTCCAGAGATGGTCTGGGCCTCTCTGGGGCTGC  
 CTGGGTGGCAGATGGTGTTCAGTGCACAGGACAGTTGTAACCGCATCATCGCAACCGTCGTGGTCAGG  
 ACACAGATCTGGTCCCAGCGACATTGCGGCGGGCCTCGCCCTGTTTCATCAGCAACAGGACAATATCAG  
 GAACAACCAAGAGCCTGCCAGGTGGTCTGCCATGCCCCAGGGAGCTCCCAGCTGCAGAAGCAGAACCAC  
 AGACTATGACTTGGTCGGAGCGCATCAGCTCAACTGTCACCTCGGCTCCATCCTGCACACCACAGGGCTG  
 CAGTACAGGGACTTCATCCACGTGAGCTCCATGACAAGTTTACGAGCTGCCGTTTTAGTGGCTCTGG  
 ATCACAGGAAAGAGTCTGTTGTGGTCGCTGTGAGGGGGACCATGTCTCTGCAGGATGTCCTTACGGACCT  
 GTCAGCGGAGAGTGAGGTGCTGGACGTGGAGTGTGAGGTGCAGGACCGCCTGGCACAAGGGTATTTCT  
 CAAGCTGCCAGATACGTTTACCAACGACTCATCAACGACGGGATTTTGGAGCAAGCCTTACGATTGCTC  
 CTGAGTACCGGCTGGTATAGTGGGCCACAGCCTCGGGGGCGGGCGGCCGCCCTGCTGGCCACCATGCT  
 CAGAGCCGCTACCCGACAGTCAAGTGTACGCTTCTCCCCACCCGGGGGCTGTGGAGCAAAGCTCTG  
 CAGGAATATTCTCAGAGCTTTCATCGTGTACTCGTCTGGGAAGGATGTGATTTCCAGGCTCAGTGTGA  
 CCAACTTGAAGATCTGAAGAGAAGAATCTTGCAGTGGTGCAGCACTGCAATAAACCCAAAGTACAAGAT  
 CTTGCTGCACGGTTTGTGGTACGAATGTTTGGAGGAAACCCCAACAACCTTGCACGAGCTGGACGGG  
 GCGACACAGGAAGTCTGACACAGCCTCTTCTGGGGAGCAGAGCCTACTGACGCGCTGGTCCCCGGCCT  
 ACAGTCTTCCAGCGACTCCCCACTGGACTCTTCTCCAAGTACCCCTCTCTACCCTCCCGCAGGAT  
 CATCCACCTGCAGGAGGAGGGCGCCTCGGGCGGTTTGGTGTGCTGCTGCTGCTGCTACTATAGCGCAA  
 TGGTACACGAAGCGGAATTCAGCAAAATACTCATAGGTCCGAAGATGCTCACCAGCACATGCCAGACA  
 TCCTGATGCGGGCCTGGACAGCGTGGTCTCCGACAGAGCGCCCTGCGTCTCTGTCAGCACAGGGGT  
 CTCAGTGTGGACGTGGCC

**ACGCGT**ACGCGGCCGCTCGAGCAGAAACTCATCTCAGAAGAGGATCTGGCAGCAAATGATATCCTGGATT  
 ACAAGGATGACGACGATAAGGTTTAA

**Protein Sequence:**

>RC226682 representing NM\_001142936  
 Red=Cloning site Green=Tags(s)

MPGMVLFGRRWAIASDDLVPFGFELVVRVLWWIGILTLYLMHRGKLDACAGGALLSSYLIVLMILLAVVI  
 CTVSAIMCVSMRGTICNPGPRKSMSKLLYIRLALFFPEMVWASLGAAWVADGVQCRTVVNGIATVVVR  
 TQIWCPATLRRASPCFISNRTISGTTKSLPRWSAMPQAGPSCRSTTDYDLVGGDQLNCHFSGILHTTGL  
 QYRDFIHVSFHDKVYELPFLVALDHRKESVVAVVRGTMQLQDVL TDL SAESEVL DVECEVQDR LAHKGIS  
 QAARYVYQRLINDGILSQAFSIAPEYRLVIVGHSLGGGAAALLATMLRAAYPQVRCYAFSPRGLWSKAL  
 QEYSQSFIVSLVLGKDVIPRLSVTNLEDLKRIRLVVAHCNPKPKYKILLHGLWYELFGGNPNLPTELD  
 GDQEVLTQPLLGEQSLTRWSPAYSFSSDPLDSSPKYPPYPPGRIIHLQEEGASGRFGCCSAAHYSK  
 WSHEAEFSKILIGPKMLTDHMPDILMRALDSVSDRAACVSCPAQGVSSVDVA

**TR**TRPLEQKLI SEEDLAANDILDYKDDDDKV

**Chromatograms:**

[https://cdn.origene.com/chromatograms/mk8006\\_f08.zip](https://cdn.origene.com/chromatograms/mk8006_f08.zip)

**Restriction Sites:**

SgfI-MluI

**Cloning Scheme:**


**ACCN:** NM\_001142936

**ORF Size:** 1629 bp

**OTI Disclaimer:** The molecular sequence of this clone aligns with the gene accession number as a point of reference only. However, individual transcript sequences of the same gene can differ through naturally occurring variations (e.g. polymorphisms), each with its own valid existence. This clone is substantially in agreement with the reference, but a complete review of all prevailing variants is recommended prior to use. [More info](#)

**OTI Annotation:** This clone was engineered to express the complete ORF with an expression tag. Expression varies depending on the nature of the gene.

**Components:** The ORF clone is ion-exchange column purified and shipped in a 2D barcoded Matrix tube containing 10ug of transfection-ready, dried plasmid DNA (reconstitute with 100 ul of water).

- Reconstitution Method:**
1. Centrifuge at 5,000xg for 5min.
  2. Carefully open the tube and add 100ul of sterile water to dissolve the DNA.
  3. Close the tube and incubate for 10 minutes at room temperature.
  4. Briefly vortex the tube and then do a quick spin (less than 5000xg) to concentrate the liquid at the bottom.
  5. Store the suspended plasmid at -20°C. The DNA is stable for at least one year from date of shipping when stored at -20°C.

**RefSeq:** [NM\\_001142936.1](#), [NP\\_001136408.1](#)

**RefSeq ORF:** 1632 bp

**Locus ID:** 221955

**UniProt ID:** [Q8NCG7](#)

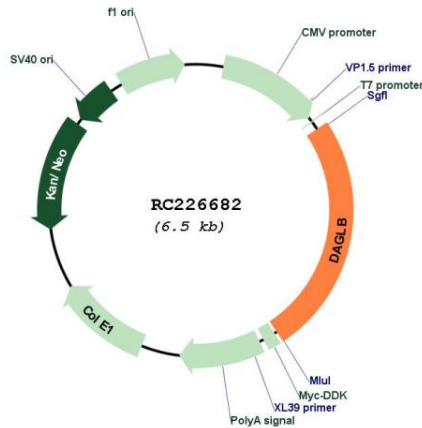
**Cytogenetics:** 7p22.1

**Protein Families:** Transmembrane

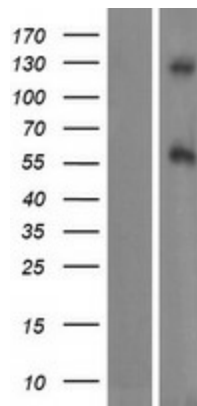
**MW:** 59.7 kDa

**Gene Summary:** Catalyzes the hydrolysis of diacylglycerol (DAG) to 2-arachidonoyl-glycerol (2-AG), the most abundant endocannabinoid in tissues. Required for axonal growth during development and for retrograde synaptic signaling at mature synapses.[UniProtKB/Swiss-Prot Function]

**Product images:**



Circular map for RC226682



Western blot validation of overexpression lysate (Cat# [LY428303]) using anti-DDK antibody (Cat# [TA50011-100]). Left: Cell lysates from untransfected HEK293T cells; Right: Cell lysates from HEK293T cells transfected with RC226682 using transfection reagent MegaTran 2.0 (Cat# [TT210002]).