

## Product datasheet for **RC226674**

### **RCOR3 (NM\_001136223) Human Tagged ORF Clone**

#### **Product data:**

Product Type:	Expression Plasmids
Product Name:	RCOR3 (NM_001136223) Human Tagged ORF Clone
Tag:	Myc-DDK
Symbol:	RCOR3
Mammalian Cell Selection:	Neomycin
Vector:	pCMV6-Entry (PS100001)
E. coli Selection:	Kanamycin (25 ug/mL)



[View online »](#)

**ORF Nucleotide Sequence:**

>RC226674 representing NM\_001136223  
 Red=Cloning site Blue=ORF Green=Tags(s)

TTTTGTAATACGACTCACTATAGGGCGGCCGGAATTCGTCGACTGGATCCGGTACCGAGGAGATCTGCC  
 GCC**CGCATCGCC**

ATGCCCGCATGATGGAGAAAGGGCCCGAGTTACTGGGAAGAACCGATCGGCCAACGGCAGCGCCAAGA  
 GCCCGGCAGGCGCGCGCGCAGCGGCCCTCGTCCACCAACGGCGGGCTGCACTACTCAGAGCCGAGAG  
 CGGCTGCAGCAGCGACGACGACGACGATGTTGGGATGAGAGTCGGAGCCGAATACCAAGCTCGGATCCCT  
 GAATTTGATCCAGGTGCTACAAAGTACACAGATAAAGACAATGGAGGGATGCTTGTATGGTCTCCATATC  
 ACAGTATCCAGATGCCAAATTGGATGAATACATTGCAATTGCAAAGGAAAAGCATGGCTACAATGTGGA  
 ACAGGCACCTTGGCATGTTGTTCTGGCATAAACATAACATTGAGAAGTCCCTTGCTGATCTCCCTAATTTT  
 ACTCCCTTTCCGGATGAGTGGACAGTGGAAAGATAAAGTCTATTTGAACAAGCCTTTAGTTTTTCATGGAA  
 AGAGCTTTCACAGGATTCAGCAAATGCTTCCAGATAAGACAATTGCAAGCCTTGTAAAATATTACTATTC  
 TTGGAAAAAACTCGCTCTAGGACAAGTTTGATGGATCGCCAGGCTCGTAACTAGCTAATAGACATAAT  
 CAGGGTGACAGTATGATGATGTAGAAGAAACACATCCAATGGATGGGAATGATAGTGATTATGATCCCA  
 AAAAAAGAGCCAAAAAGAGGGTAATACTGAACAACTGTCCAACTAGCAAGATTGGACTTGGAAGAAG  
 AGAGTATCAGAGTTTACAACATCGCCATCATTCTCAGCGTTCTAAGTGCCGTCCACCTAAGGGCATGTAT  
 TTAACCCAGGAAGATGTGGTAGCAGTTTCTGTAGTCCCAATGCAGCCAACACCATCCTGAGGCAACTGG  
 ACATGGAGTTGATCTCTCTAAAACGTGAGTTTCTGAGTCCAGCAAGTAAACAGTGCACCTTAAACAGAA  
 AATGGAAGGTGGAATTGAAGAATTCAAACCTCTGAGTCAAATCAGAAAATTAATGCCCGTTGGACCACA  
 GAGGAGCAGCTTCTAGCAGTGAAGGTGTCGCAAAATATGGTAAAGATTTTCAAGCTATTGCAGATGTAA  
 TTGGCAACAAGACTGTTGGCCAAGTGAAGAATCTTTGTAACACTACAGGCGTCGGTTTAACTTAGAGGA  
 GGTATTGCAGGAGTGGGAAGCAGAACAAGGAACCCAGGCTTCTAATGGTGATGCTTCTACTTTAGGGGAG  
 GAGACAAAAAGTCTTCTAATGTCCATCAGGGAAGAGCACTGATGAAGAAGAGGAGGCACAGACCCAC  
 AGGCTCCTCGGACACTGGGTCCATCACCTCCTGCCCATCATCCACTCCAACACCAACAGCCCTATTGC  
 CACTCTGAACCAGCCTCCACCCTTCTTCTGTCACACTGCCTGCTGCCCGGCTCTTACCAGGAGCCT  
 CCTCCACTCCAGCAGCAGGCTCGGTTTATCCAGCCCCGGCAACTTTAAATCAGCCTCCACCACCTCTTA  
 TTCGCCCTGCTAATTCATGCCACCCCTCTAAACCAAGACCGGTGTTGTCCACGGTTGGTGGTCAACA  
 GCCACCATCACTATTGGAATTCAGACAGATTCACAGTCTCACTGCAC

**ACGCGT**ACGCGGCCGCTCGAGCAGAACTCATCTCAGAAGAGGATCTGGCAGCAAATGATATCCTGGATT  
 ACAAGGATGACGACGATAAGGTTTAA

**Protein Sequence:**

>RC226674 representing NM\_001136223  
 Red=Cloning site Green=Tags(s)

MPGMMEKGPPELLGKNRSANGSAKSPAGGGGSGASSTNGGLHYSEPESEGCSSDDEHDVGMRVGAEQARIP  
 EFDPGATKYTDKNDGMLVWSPYHSIPDAKLDEYIAIAKEKHGYNVEQALGMLFWHKHNIKSLADLPNF  
 TPFPEWTVEDKVLFEQAFSFGKSFHRIQQMLPDKTIASLVKYYYSWKKTRSRTSLMDRQARKLANRHN  
 QGSDDDVVEETHPMDGNDSDYDPKKEAKKEGNTEQPVTQSKIGLRREYQSLQHRHHSQRSKCRPPKGM  
 LTQEDVVAVSPPNAANTILRQLDMELISLKRQVQNAKQVNSALKQKMEGGIEEFKPPESNQKINARWTT  
 EEQLLAVQGVRYGKDFQAIADVIGNKTVGQVKNFFVNYRRRNLVEVLQEWAEQGTQASNGDASTLGE  
 ETKSASNVPSGKSTDEEEEAQTPQAPRTLGPSPAPSSPTPTAPIATLNQPPPLLRPTLPAAPALHRQP  
 PPLQQARFIQPRPTLNQPPPLIRPANSMPRLNRPVLSVGGQPPSLIGIQTSQSSSLH

**TRTRPLEQKLISEEDLAANDILDYKDDDDKV**

**Chromatograms:**

[https://cdn.origene.com/chromatograms/mk8066\\_h12.zip](https://cdn.origene.com/chromatograms/mk8066_h12.zip)

**Restriction Sites:**

Sgfl-Mlul

**Cloning Scheme:**


**ACCN:** NM\_001136223

**ORF Size:** 1659 bp

**OTI Disclaimer:** The molecular sequence of this clone aligns with the gene accession number as a point of reference only. However, individual transcript sequences of the same gene can differ through naturally occurring variations (e.g. polymorphisms), each with its own valid existence. This clone is substantially in agreement with the reference, but a complete review of all prevailing variants is recommended prior to use. [More info](#)

**OTI Annotation:** This clone was engineered to express the complete ORF with an expression tag. Expression varies depending on the nature of the gene.

**Components:** The ORF clone is ion-exchange column purified and shipped in a 2D barcoded Matrix tube containing 10ug of transfection-ready, dried plasmid DNA (reconstitute with 100 ul of water).

- Reconstitution Method:**
1. Centrifuge at 5,000xg for 5min.
  2. Carefully open the tube and add 100ul of sterile water to dissolve the DNA.
  3. Close the tube and incubate for 10 minutes at room temperature.
  4. Briefly vortex the tube and then do a quick spin (less than 5000xg) to concentrate the liquid at the bottom.
  5. Store the suspended plasmid at -20°C. The DNA is stable for at least one year from date of shipping when stored at -20°C.

**RefSeq:** [NM\\_001136223.3](#)

**RefSeq ORF:** 1662 bp

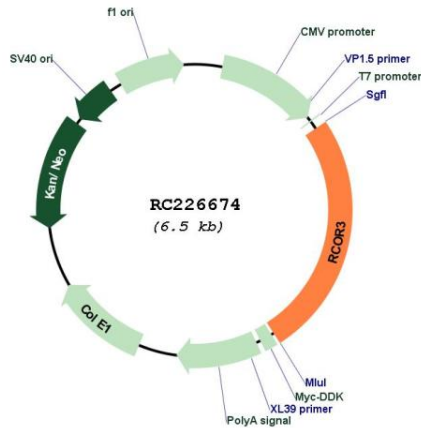
**Locus ID:** 55758

**UniProt ID:** [Q9P2K3](#)

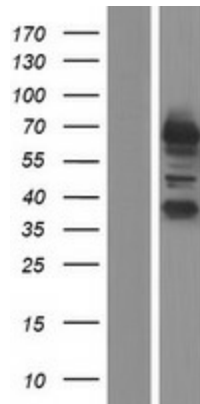
**Cytogenetics:** 1q32.2-q32.3

**Protein Families:** Transcription Factors  
**MW:** 61 kDa  
**Gene Summary:** May act as a component of a corepressor complex that represses transcription. [UniProtKB/Swiss-Prot Function]

**Product images:**



Circular map for RC226674



Western blot validation of overexpression lysate (Cat# [LY427860]) using anti-DDK antibody (Cat# [TA50011-100]). Left: Cell lysates from untransfected HEK293T cells; Right: Cell lysates from HEK293T cells transfected with RC226674 using transfection reagent MegaTran 2.0 (Cat# [TT210002]).