

Product datasheet for **RC226673**

C4orf52 (SMIM20) (NM_001145432) Human Tagged ORF Clone

Product data:

| | |
|---------------------------|--|
| Product Type: | Expression Plasmids |
| Product Name: | C4orf52 (SMIM20) (NM_001145432) Human Tagged ORF Clone |
| Tag: | Myc-DDK |
| Symbol: | C4orf52 |
| Synonyms: | C4orf52; MITRAC7; PNX |
| Mammalian Cell Selection: | Neomycin |
| Vector: | pCMV6-Entry (PS100001) |
| E. coli Selection: | Kanamycin (25 ug/mL) |
| ORF Nucleotide Sequence: | <p>>RC226673 representing NM_001145432 Red=Cloning site Blue=ORF Green=Tags(s)</p> <p>TTTTGTAATACGACTCACTATAGGGCGGCCGGAATTCGTCGACTGGATCCGGTACCGAGGAGATCTGCCGCCCGATCGCC</p> <p>ATGTCCCGAACCTGCGCACCGCTCATTTTCGGCGGCTTCATCTCCCTGATCGCGCCGCTTCTATCCATCTACTTCCGGCCCCTAATGAGATTGGAGGAGTACAAGAAGGAACAAGCTATAAATCGGGCTGGAATGTTCAAGAGGATGTGCAGCCACCAGGGTAAAAGTGTGGTCTGATCCATTTGGCAGGAAA</p> <p>ACGCGTACGCGGCCGCTCGAGCAGAACTCATCTCAGAAGAGGATCTGGCAGCAAATGATATCCTGGATTACAAGGATGACGACGATAAGGTTTAA</p> |
| Protein Sequence: | <p>>RC226673 representing NM_001145432 Red=Cloning site Green=Tags(s)</p> <p>MSRNLRTALIFGGFISLIGAAFYPIYFRPLMRLEEYKKEQAINRAGIVQEDVQPPGLKVWSDPFGRK</p> <p>TRTRPLEQKLISEEDLAANDILDYKDDDDKV</p> |
| Chromatograms: | https://cdn.origene.com/chromatograms/mk8031_a11.zip |
| Restriction Sites: | Sgfl-MluI |



View online »

Cloning Scheme:


ACCN: NM_001145432

ORF Size: 201 bp

OTI Disclaimer: The molecular sequence of this clone aligns with the gene accession number as a point of reference only. However, individual transcript sequences of the same gene can differ through naturally occurring variations (e.g. polymorphisms), each with its own valid existence. This clone is substantially in agreement with the reference, but a complete review of all prevailing variants is recommended prior to use. [More info](#)

OTI Annotation: This clone was engineered to express the complete ORF with an expression tag. Expression varies depending on the nature of the gene.

Components: The ORF clone is ion-exchange column purified and shipped in a 2D barcoded Matrix tube containing 10ug of transfection-ready, dried plasmid DNA (reconstitute with 100 ul of water).

Reconstitution Method:

1. Centrifuge at 5,000xg for 5min.
2. Carefully open the tube and add 100ul of sterile water to dissolve the DNA.
3. Close the tube and incubate for 10 minutes at room temperature.
4. Briefly vortex the tube and then do a quick spin (less than 5000xg) to concentrate the liquid at the bottom.
5. Store the suspended plasmid at -20°C. The DNA is stable for at least one year from date of shipping when stored at -20°C.

RefSeq: [NM_001145432.1](#), [NP_001138904.1](#)

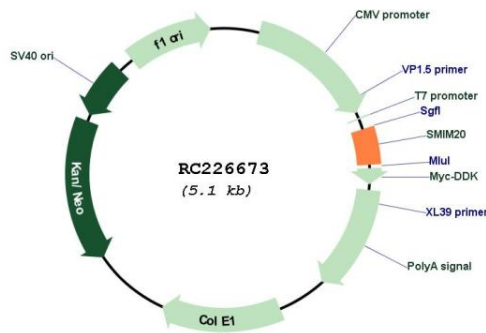
RefSeq ORF: 204 bp

Locus ID: 389203

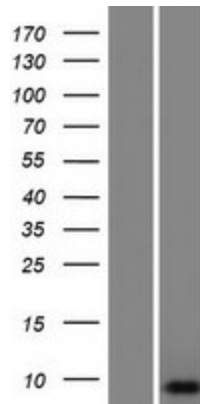
UniProt ID: [Q8N5G0](#)
 Cytogenetics: 4p15.2
 MW: 7.5 kDa

Gene Summary: Component of the MITRAC (mitochondrial translation regulation assembly intermediate of cytochrome c oxidase complex) complex, that regulates cytochrome c oxidase assembly. Promotes the progression of complex assembly after the association of MT-CO1/COX1 with COX4I1 and COX6C. Chaperone-like assembly factor required to stabilize newly synthesized MT-CO1/COX1 and to prevent its premature turnover.[UniProtKB/Swiss-Prot Function]

Product images:



Circular map for RC226673



Western blot validation of overexpression lysate (Cat# [LY428881]) using anti-DDK antibody (Cat# [TA50011-100]). Left: Cell lysates from untransfected HEK293T cells; Right: Cell lysates from HEK293T cells transfected with RC226673 using transfection reagent MegaTran 2.0 (Cat# [TT210002]).