

Product datasheet for **RC226669**

SPATA24 (NM_194296) Human Tagged ORF Clone

Product data:

Product Type: Expression Plasmids
Product Name: SPATA24 (NM_194296) Human Tagged ORF Clone
Tag: Myc-DDK
Symbol: SPATA24
Synonyms: CCDC161; T6441
Mammalian Cell Selection: Neomycin
Vector: pCMV6-Entry (PS100001)
E. coli Selection: Kanamycin (25 ug/mL)
ORF Nucleotide Sequence: >RC226669 representing NM_194296
Red=Cloning site Blue=ORF Green=Tags(s)

TTTTGTAATACGACTCACTATAGGGCGGCCGGAATTCGTCGACTGGATCCGGTACCGAGGAGATCTGCC
GCC**CGATCGCC**

ATGGCGACGCCCTCGGGTGGTCAAGGCGGGGTCAAGGCTCAGGATCTGTGTGTCTCGCTTAGATCAACTGCGGG
ACGTGATTGAGTCTCAGGAGGAATAATCCACCAGCTGAGGAACGTGATGGTTCTCCAGGACGAAAATTT
TGTCAGTAAAGAAGAGTCCAGGCAGTGGAGAAGAAGCTGGTGAAGAGAAAAGCTGCCCATGCCAAAACC
AAGGTCTCTGGCCAAGGAAGAGGAGAAGTTACAGTTTGCCTCGGAGAGGTAGAGGTGCTATCCAAGC
AGCTGGAGAAAGAGAAGCTGGCCTTTGAAAAGCGCTCTCCAGTGTCAAGAGCAAAGTCCTTCAGGAGTC
CAGCAAGAAGGACCAGCTCATCACAAGTGCAATGAGATTGAGTCTCACATTATAAAGCAAGAAGATATA
CTTAATGGCAAAGAGAATGAGATTAAGAGTTGCAGCAAGTTATCAGCCAGCAGAAAACAGATCTTCAGGA
ATCACATGTCTGACTTCCGGATCCAGAAGCAGCAGGAGAGCTACATGGCCAGGTGCTGGACCAGAAGCA
TAAGAAAGCCTCAGGGACACGTCAGGCCCGCAGCCACCAGCATCCAGGGAAAAA

ACGCGTACGCGGCCGCTCGAGCAGAACTCATCTCAGAAGAGGATCTGGCAGCAAATGATATCCTGGATT
ACAAGGATGACGACGATAAGGTTTAA

Protein Sequence: >RC226669 representing NM_194296
Red=Cloning site Green=Tags(s)

MATPLGWSKAGSGSVCLALDQLRDVIESQEELIHQLRNVMLQDENFVSKEEFQAVEKLVVEKAAHAKT
KVL LAKEEEKLQFALGEVEVLSKQLEKEKLAFEKALSSVSKVLQESSKQDLITKCNEIESHIKQEDI
LNGKENEIKELQQVISQKQIFRNHMSDFRIKQKQESYMAQVLDQKHKKASGTRQARSHQHPREK

TRTRPLEQKLISEEDLAANDILDYKDDDDKV



[View online »](#)

Chromatograms: https://cdn.origene.com/chromatograms/mk6481_d07.zip

Restriction Sites: SgfI-MluI

Cloning Scheme:



ACCN: NM_194296

ORF Size: 615 bp

OTI Disclaimer: The molecular sequence of this clone aligns with the gene accession number as a point of reference only. However, individual transcript sequences of the same gene can differ through naturally occurring variations (e.g. polymorphisms), each with its own valid existence. This clone is substantially in agreement with the reference, but a complete review of all prevailing variants is recommended prior to use. [More info](#)

OTI Annotation: This clone was engineered to express the complete ORF with an expression tag. Expression varies depending on the nature of the gene.

Components: The ORF clone is ion-exchange column purified and shipped in a 2D barcoded Matrix tube containing 10ug of transfection-ready, dried plasmid DNA (reconstitute with 100 ul of water).

Reconstitution Method:

1. Centrifuge at 5,000xg for 5min.
2. Carefully open the tube and add 100ul of sterile water to dissolve the DNA.
3. Close the tube and incubate for 10 minutes at room temperature.
4. Briefly vortex the tube and then do a quick spin (less than 5000xg) to concentrate the liquid at the bottom.
5. Store the suspended plasmid at -20°C. The DNA is stable for at least one year from date of shipping when stored at -20°C.

RefSeq: [NM_194296.2](#)

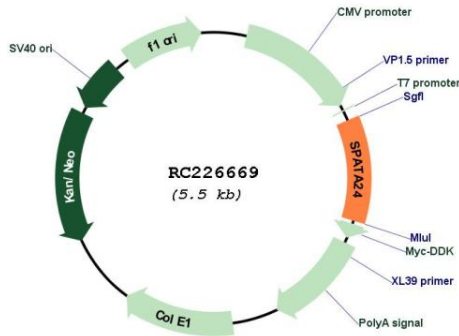
RefSeq ORF: 618 bp

Locus ID: 202051

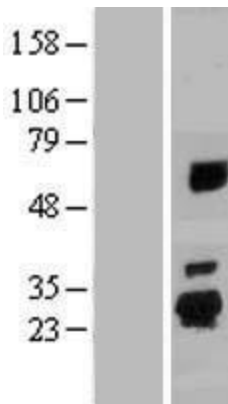
UniProt ID: [Q86W54](#)

Cytogenetics: 5q31.2
MW: 23.4 kDa
Gene Summary: Binds DNA with high affinity but does not bind to TATA boxes. Synergises with GMNN and TBP in activation of TATA box-containing promoters and with GMNN and TBPL1 in activation of the NF1 TATA-less promoter. May play a role in cytoplasm movement and removal during spermiogenesis (By similarity).[UniProtKB/Swiss-Prot Function]

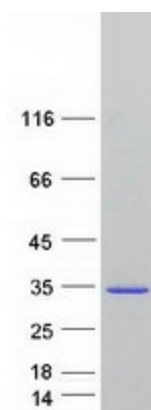
Product images:



Circular map for RC226669



Western blot validation of overexpression lysate (Cat# [LY430677]) using anti-DDK antibody (Cat# [TA50011-100]). Left: Cell lysates from untransfected HEK293T cells; Right: Cell lysates from HEK293T cells transfected with RC226669 using transfection reagent MegaTran 2.0 (Cat# [TT210002]).



Coomassie blue staining of purified SPATA24 protein (Cat# [TP326669]). The protein was produced from HEK293T cells transfected with SPATA24 cDNA clone (Cat# RC226669) using MegaTran 2.0 (Cat# [TT210002]).