

## Product datasheet for **RC226656**

### DSN1 (NM\_001145318) Human Tagged ORF Clone

#### Product data:

**Product Type:** Expression Plasmids  
**Product Name:** DSN1 (NM\_001145318) Human Tagged ORF Clone  
**Tag:** Myc-DDK  
**Symbol:** DSN1  
**Synonyms:** C20orf172; dj469A13.2; hKNL-3; KNL3; MIS13  
**Mammalian Cell Selection:** Neomycin  
**Vector:** pCMV6-Entry (PS100001)  
**E. coli Selection:** Kanamycin (25 ug/mL)  
**ORF Nucleotide Sequence:** >RC226656 representing NM\_001145318  
 Red=Cloning site Blue=ORF Green=Tags(s)

TTTTGTAATACGACTCACTATAGGGCGGCCGGAATTCGTCGACTGGATCCGGTACCGAGGAGATCTGCC  
 GCC**CGATCGCC**

ATGTCTAAGACTCATGATCATCAATTGGAATCAAGTCTCAGTCTGTGGAAGTGTGGTAAAACATCTG  
 CCTCCCTGGAGATGAATCAAGGCGTTTCAGAGGAAAGAATTCACCTTGGCTCTAGCCCTAAAAAGGGG  
 AAATTGTGATCTCAGCCACCAGGAAAGACTTCAGTCGAAGTCCCTTCATTTGTCTCCTCAAGAACAATCT  
 GCCAGTTATCAAGACAGGAGGCAATCCTGGCGGAGCAAGTATGAAAGAAACGAACCGGCGGAAGTCGC  
 TGCATCCCATTACCAGGCATCACAGAGCTCAGCCGGTCTATCAGTGTGATTTAGCAGAAAGCAAACG  
 GCTTGGCTGTCTCCTGCTTCCAGTTTCCAGTTCTCTATTAGAACTTGAACCTTTCCTAAGGGCACT  
 AAGGGCTTCAGTCTTGAAGTTTTAGAGCCAAAGCATCTTCTCTTCTGAAGAATTGAAACATTTTGCGAG  
 ACGGACTGGAACTGATGGAACCTACAAAAATGTTTTGAAGATTCAAATGGAAAAGCATCAGATTTTTC  
 TTTGGAAGCATCTGTGGCTGAGATGAAGGAATACATAACAAAGTTTTCTTTAGAACGTCAGACTTGGGAT  
 CAGCTCTTGCTTCACTACCAGCAGGAGGCTAAAGAGATATTGTCCAGAGGATCAACTGAGGCCAAAATTA  
 CTGAGGTCAAAGTGGAACTATGACATATCTTGGGTCTTCTCAGAATGAAGTTCTTAATACAAAACCTGA  
 CTACCAGAAAATATTACAGAACCAGAGCAAAGTCTTTGACTGTATGGAGTTGGTGATGGATGAACTGCAA  
 GGATCAGTGAAACAGCTGCAGGCCTTTATGGATGAAAGTACCCAGTCTCCAGAAGGTGTCAGTACAGC  
 TCGGAAAAGAGAAGCATGCAACAATTAGATCCCTCACCAGCTCGAAAACGTTTGAAGCTTCAGCTACAGAA  
 CCCACCTGCCATACATGGATCTGGATCTGGATCTTGTGCG

**ACGCGT**ACGCGGCCGCTCGAGCAGAAACTCATCTCAGAAGAGGATCTGGCAGCAAATGATATCCTGGATT  
 ACAAGGATGACGACGATAAGGTTTAA



[View online »](#)

**Protein Sequence:** >RC226656 representing NM\_001145318  
 Red=Cloning site Green=Tags(s)

MSKTHDHLQLESSLSPVEVFAKTSASLEMNQGVSEERIHLSGSPKKGNCDSLHQERLQSKSLHLSPQEQS  
 ASYQDRRQSWRRASMKETNRRKSLHPIHQITELSRISVDLAESKRLGCLLSSFQFSIQKLEPFLRDT  
 KGFSLSEFRKASSLSEELKHFADGLETDTLQKCFEDSNGKASDFSLEASVAEMKEYITKFSLERQTWD  
 QLLLHYQQEAKEILSRGSTEAKITEVKVEPMTYLGSSQNEVLNTPDYQKILQNQSKVDFDCMELVMDELQ  
 GSVKQLQAFMDESTQCFQKVSVQLGKRSMQQLDPPARKLLKLQLQNPPAIHGSGSGSCQ

TRTRPLEQKLISEEDLAANDILDYKDDDDKV

**Chromatograms:** [https://cdn.origene.com/chromatograms/ja1536\\_e08.zip](https://cdn.origene.com/chromatograms/ja1536_e08.zip)

**Restriction Sites:** SgfI-MluI

**Cloning Scheme:**



**ACCN:** NM\_001145318

**ORF Size:** 1020 bp

**OTI Disclaimer:** The molecular sequence of this clone aligns with the gene accession number as a point of reference only. However, individual transcript sequences of the same gene can differ through naturally occurring variations (e.g. polymorphisms), each with its own valid existence. This clone is substantially in agreement with the reference, but a complete review of all prevailing variants is recommended prior to use. [More info](#)

**OTI Annotation:** This clone was engineered to express the complete ORF with an expression tag. Expression varies depending on the nature of the gene.

**Components:** The ORF clone is ion-exchange column purified and shipped in a 2D barcoded Matrix tube containing 10ug of transfection-ready, dried plasmid DNA (reconstitute with 100 ul of water).

**Reconstitution Method:**

1. Centrifuge at 5,000xg for 5min.
2. Carefully open the tube and add 100ul of sterile water to dissolve the DNA.
3. Close the tube and incubate for 10 minutes at room temperature.
4. Briefly vortex the tube and then do a quick spin (less than 5000xg) to concentrate the liquid at the bottom.
5. Store the suspended plasmid at -20°C. The DNA is stable for at least one year from date of shipping when stored at -20°C.

**RefSeq:** [NM\\_001145318.2](#)

**RefSeq ORF:** 1023 bp

**Locus ID:** 79980

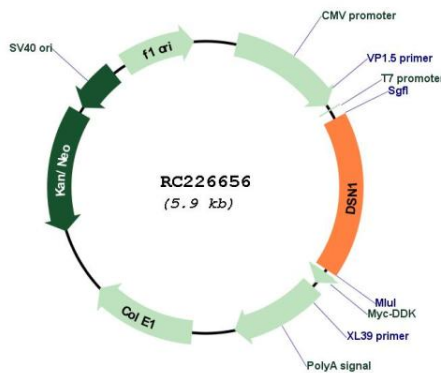
**UniProt ID:** [Q9H410](#)

**Cytogenetics:** 20q11.23

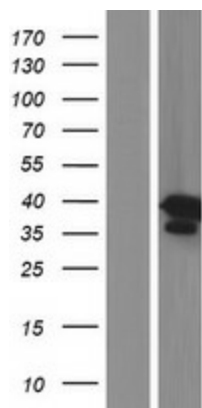
**MW:** 38.1 kDa

**Gene Summary:** This gene encodes a kinetochore protein that functions as part of the minichromosome instability-12 centromere complex. The encoded protein is required for proper kinetochore assembly and progression through the cell cycle. Alternative splicing results in multiple transcript variants. [provided by RefSeq, Feb 2009]

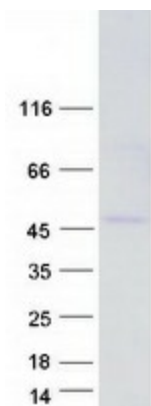
**Product images:**



Circular map for RC226656



Western blot validation of overexpression lysate (Cat# [LY428821]) using anti-DDK antibody (Cat# [TA50011-100]). Left: Cell lysates from untransfected HEK293T cells; Right: Cell lysates from HEK293T cells transfected with RC226656 using transfection reagent MegaTran 2.0 (Cat# [TT210002]).



Coomassie blue staining of purified DSN1 protein (Cat# [TP326656]). The protein was produced from HEK293T cells transfected with DSN1 cDNA clone (Cat# RC226656) using MegaTran 2.0 (Cat# [TT210002]).