

## Product datasheet for **RC226655**

### **NEDD4 2 (NEDD4L) (NM\_001144970) Human Tagged ORF Clone**

#### **Product data:**

Product Type:	Expression Plasmids
Product Name:	NEDD4 2 (NEDD4L) (NM_001144970) Human Tagged ORF Clone
Tag:	Myc-DDK
Symbol:	NEDD4 2
Synonyms:	hNEDD4-2; NEDD4-2; NEDD4.2; PVNH7; RSP5
Mammalian Cell Selection:	Neomycin
Vector:	pCMV6-Entry (PS100001)
E. coli Selection:	Kanamycin (25 ug/mL)



[View online »](#)

**ORF Nucleotide Sequence:**

>RC226655 representing NM\_001144970  
 Red=Cloning site Blue=ORF Green=Tags(s)

TTTTGTAATACGACTCACTATAGGGCGGCCGGAATTCGTCGACTGGATCCGGTACCGAGGAGATCTGCC  
 GCC**CGGATCGCC**

ATGGAGCGACCCTATACATTTAAGGACTTCTCCTCAGACCAAGAAGTCATAAGTCTCGAGTTAAGGGAT  
 TTTTGCATTGAAAATGGCCTATATGCCAAAAATGGAGGTCAAGATGAAGAAAACAGTGACCAGAGGGA  
 TGACATGGAGCATGGATGGGAAGTTGTTGACTCAAATGACTCGGCTTCTCAGCACCAAGAGGAATTCCT  
 CCTCCTCCTGCCTCCCGGGTGGGAAGAAAAGTGGACAATTTAGGCCGAATTAATATGTCAACCACA  
 ACAACCGGACCACTCAGTGGCACAGACCAAGCCTGATGGACGTGTCTCGGAGTCGGACAATAACATCAG  
 ACAGATCAACCAGGAGGCAGCACACCGGCGCTTCCGCTCCCGCAGGCACATCAGCGAAGACTTGGAGCCC  
 GAGCCCTCGGAGGGCGGGATGTCCCGAGCCTTGGGAGACCATTCAGAGGAAGTGAATATCGCTGGAG  
 ACTCTCTCGGTCTGGCTCTGCCCCACCACCGGCTCCCGAGGATCTCGGACCAGCCCTCAGGAGCTGTC  
 AGAGGAACTAAGCAGAAGGCTTCAGATCACTCCAGACTCCAATGGGGAACAGTTCAGCTCTTTGATTCAA  
 AGAGAACCCTCCTCAAGTTGAGGTCATGCAAGTGTACCAGCAGCAGTTGCAAGAACAGGGCCATCTACCAC  
 CGCCATCAGTGGCCTATGTACATACCACGCCGGTCTGCCTTCAGGCTGGGAAGAAAAGAAAAGATGCTAA  
 GGGGCGCACATACTATGTCAATCATAAACAATCGAACCAACTTGGACTCGACCTATCATGCAGCTTGCA  
 GAAGATGGTGCCTCCGGATCAGCCACAACAGTAAACAACCATCTAATCGAGCCTCAGATCCGCCGGCCTC  
 GTAGCCTCAGCTCGCAACAGTAACTTTATCTGCCCGCTGGAGGGTGCCAAGGACTCACCCGTACGTGC  
 GGCTGTGAAAGACACCCTTTCCAACCCACAGTCCACAGCCATCACCTTACAACCCCCAAACCACAA  
 CACAAAGTCACACAGAGCTTCTTGCCACCCGGCTGGGAAATGAGGATAGCGCCAAACGGCCGGCCTTCT  
 TCATTGATCATAACACAAAGACTACAACCTGGGAAGATCCACGTTTGAATTTCCAGTACATATCGGGTC  
 AAAGACATCTTTAAACCCCAATGACCTTGCCCCCTTCCCTCTGGCTGGGAAGAAAAGAAATTCAGTTGGAT  
 GGCCGAACGTTTTATATTGATCATAATAGCAAAATTAAGTCAAGTGGGAAGACCCCAAGACTGCAGAACCAG  
 CTATTACTGGTCCGGCTGTCCCTTACTCCAGAGAAATTAAGCAGAAATATGACTACTTCAGGAAGAAAT  
 AAAGAAACCTGTGATATCCCAATAGGTTTGAATGAAACTTCACAGAAATAACATATTTGAAGAGTCC  
 TATCGGAGAAATATGTCGTAAGAAAGACCAGATGTCTAAAAGCTAGACTGTGGATTGAGTTTGAATCAG  
 AGAAAGGCTTGGACTATGGGGTGTGGCCAGAGAAATGGTCTTCTTACTGTCCAAGAGATGTTCAACCC  
 CTACTACGGCCTTTTGGTACTCTGCCACGGACAACACCCCTCAGATCAACCCTAATTCAGGCCTC  
 TGTAAATGAGGATCATTTGCTACTTCACTTTTATTGGAAGAGTTGCTGGTCTGGCCGATTTTCATGGGA  
 AGCTCTTAGATGGTTTCTCATTAGACCATTTACAAGATGATGTTGGGAAGCAGATAACCCTGAATGA  
 CATGGAATCTGTGGATAGTGAATATTACAACCTTTGAAATGGATCCTGGAGAATGACCCTACTGAGCTG  
 GACCTCATGTTCTGCATAGACGAAGAAAACCTTTGGACAGACATATCAAGTGGATTTGAAGCCCAATGGGT  
 CAGAAAATATGGTCACAAATGAAAACAAAAGGGAATATATCGACTTAGTCATCCAGTGGAGATTTGTGAA  
 CAGGGTCCAGAAGCAGATGAACGCCTTCTTGGAGGGATTCACAGAACTACTTCTATTGATTTGATTTAA  
 ATTTTTGATGAAAATGAGCTGGAGTTGCTCATGTGCGGCCTCGGTGATGTGGATGTAATGACTGGAGAC  
 AGCATTCTATTTACAAGAACGGCTACTGCCAAACCCCGTCATTAGTGGTTCTGGAAGGCTGTGCT  
 ACTCATGGACGCCGAAAAGCGTATCCGGTTACTGCAGTTTGTACAGGGACATCGCGAGTACCTATGAAT  
 GGATTTGCCGAACCTTATGGTTCCAATGGTCTCAGCTGTTACAATAGAGCAATGGGGCAGTCTGAGA  
 AACTGCCAGAGCTCACACATGCTTTAATCGCCTTGACTTACCTCCATATGAAACCTTTGAAGATTTACG  
 AGAGAACTTCTCATGGCCGTGGAAAATGCTCAAGGATTTGAAGGGTGGAT

**ACGCGT**ACGCGGCCGCTCGAGCAGAACTCATCTCAGAAGAGGATCTGGCAGCAAATGATATCCTGGATT  
 ACAAGGATGACGACGATAAGGTTTAA

**Protein Sequence:** >RC226655 representing NM\_001144970  
Red=Cloning site Green=Tags(s)

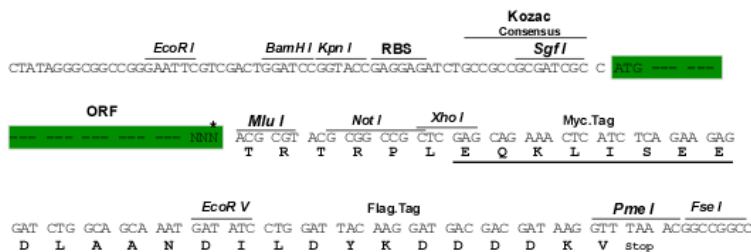
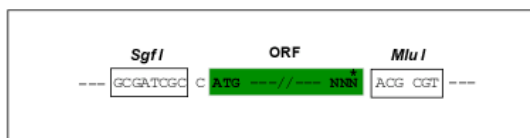
MERP YTFKDFLLRPRSHKSRVKGFLRLK MAYMPKNGGQDEENS DQRDDMEHGWEV VDSNDSASQHQEELP  
PPPLPGWEEKVDNLGR TYVNHNNRTTQWHRPSLMDV SSESDNNIRQINQEAAHRRFRSRRHISEDLEP  
EPSEGGDVPEPWETISEEVNIAGDSLGLALPPPASPGRSRTSPQELSEELSRRLQITPDSNGEQFSSLIQ  
REPSSRLRSCSVTDAVAEQGHLPPPSVAVVHTTPGLPSGWEERKDAKGR TYVNHNNRTTWTWRPIMQLA  
EDGASGSATNSNNHLIEPQIRRPRLSSPTVTL SAPLEGAKDSPVRRAVKDTLSNPQSPQSPYNSPKPQ  
HKVTQSF LPPGWEMRIAPNGRPFIDHNTKTTTWEDPRLKFPVHMRSKTSLNPNDLGPLPGWEERIHLD  
GRTFYIDHNSKITQWEDPRLQNPAITGPAVPYSREFKQKYDYFRKLLKKPADIPNRFEMKLHRNNIFEES  
YRRIMSVKRPDVLKARLWIEFESEKGLDYGGVAREWFFLLSKEMFNYYGLFEYSATDNYTLQINPNSGL  
CNEDHLSYFTF IGRVAGLAVFHGKLLDGGFFIRPFYKMLGKQITLNDMESVDSEYYNSLKWILENDPTEL  
DLMFCIDEENFGQTYQVDLKPNGSEIMVTNENKREYIDLVIQWRFVNRVQKQMNAFLEGFTELLPIDLIK  
IFDENELELLMCGLGDVDVNDWRQHSIYKNGYCPNHPVIQWFKAVLLMDAEKRIRLLQFVTGTSRVPMN  
GFAELYGSNGPQLFTIEQWGSPEKLPRAHTCFNRDLPPYETFEDLREKLLMAVENAQGFEGVD

TRTRPLEQKLI SEEDLAANDILDYKDDDDKV

**Restriction Sites:** Sgfl-MluI

**Cloning Scheme:**

Cloning sites used for ORF Shutting:



\* The last codon before the Stop codon of the ORF

**ACCN:** NM\_001144970

**ORF Size:** 2502 bp

**OTI Disclaimer:** The molecular sequence of this clone aligns with the gene accession number as a point of reference only. However, individual transcript sequences of the same gene can differ through naturally occurring variations (e.g. polymorphisms), each with its own valid existence. This clone is substantially in agreement with the reference, but a complete review of all prevailing variants is recommended prior to use. [More info](#)
**OTI Annotation:** This clone was engineered to express the complete ORF with an expression tag. Expression varies depending on the nature of the gene.

**Components:** The ORF clone is ion-exchange column purified and shipped in a 2D barcoded Matrix tube containing 10ug of transfection-ready, dried plasmid DNA (reconstitute with 100 ul of water).

**Reconstitution Method:**

1. Centrifuge at 5,000xg for 5min.
2. Carefully open the tube and add 100ul of sterile water to dissolve the DNA.
3. Close the tube and incubate for 10 minutes at room temperature.
4. Briefly vortex the tube and then do a quick spin (less than 5000xg) to concentrate the liquid at the bottom.
5. Store the suspended plasmid at -20°C. The DNA is stable for at least one year from date of shipping when stored at -20°C.

**RefSeq:** [NM\\_001144970.3](#)

**RefSeq Size:** 8361 bp

**RefSeq ORF:** 2505 bp

**Locus ID:** 23327

**UniProt ID:** [Q96PU5](#)

**Cytogenetics:** 18q21.31

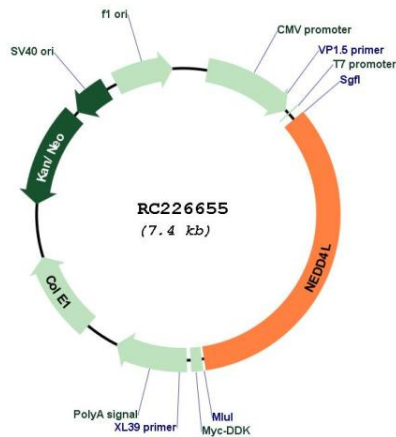
**Protein Families:** Druggable Genome

**Protein Pathways:** Endocytosis, Ubiquitin mediated proteolysis

**MW:** 96.3 kDa

**Gene Summary:** This gene encodes a member of the Nedd4 family of HECT domain E3 ubiquitin ligases. HECT domain E3 ubiquitin ligases transfer ubiquitin from E2 ubiquitin-conjugating enzymes to protein substrates, thus targeting specific proteins for lysosomal degradation. The encoded protein mediates the ubiquitination of multiple target substrates and plays a critical role in epithelial sodium transport by regulating the cell surface expression of the epithelial sodium channel, ENaC. Single nucleotide polymorphisms in this gene may be associated with essential hypertension. Alternatively spliced transcript variants encoding multiple isoforms have been observed for this gene. [provided by RefSeq, Mar 2012]

### Product images:



Circular map for RC226655