

Product datasheet for **RC226649**

NDOR1 (NM_001144028) Human Tagged ORF Clone

Product data:

Product Type:	Expression Plasmids
Product Name:	NDOR1 (NM_001144028) Human Tagged ORF Clone
Tag:	Myc-DDK
Symbol:	NDOR1
Synonyms:	bA350O14.9; CIAE1; NR1
Mammalian Cell Selection:	Neomycin
Vector:	pCMV6-Entry (PS100001)
E. coli Selection:	Kanamycin (25 ug/mL)



[View online »](#)

ORF Nucleotide Sequence:

>RC226649 representing NM_001144028
 Red=Cloning site Blue=ORF Green=Tags(s)

TTTTGTAATACGACTCACTATAGGGCGGCCGGGAATTCGTCGACTGGATCCGGTACCGAGGAGATCTGCC
 GCC**CGGATCGCC**

ATGCCAGCCCGCAGCTTCTGGTCTCTCGGCAGCCAGACAGGCACGGCTCAGGATGTGTGGAGAGAC
 TGGGTCGCGAGGCCCGGCCCGCGGCTTGGCTGCCGGTGCAGGCCCTGGACTCTACCCGGTGGTGAA
 TCTGATTAACGAGCCCTGGTGATATTTGTTTGTGCAACTACAGGCCAAGGAGACCCCTGACAACATG
 AAGAACTTCTGGAGGTTTATATTCGGAAGAACCTGCCCTCCACTGCCCTCTGTGAGATGGACTTTGCCG
 TCCTGGGCTCGGGGACTCCTACACGCAAGTTCAACTTCGTGGCAAGAAGCTGCACCAGCGCTACT
 GCAGCTTGGGGCAGCGCCCTCTGCCGTGTGCCTGGCGATGACCAGCATGAGCTGGGGCCGACGCT
 GCTGTGGACCCCTGGCTGCGAGACTTGTGGACAGGGTCTGGGGCTGTACCCGCCGCTCCGGGCTCA
 CTGAGATCCCTCCCGAGTCCCCTGCCCTCAAGTTCACCTGTCTTCTCAAGAGGCACCCAGCAC
 GGGCTCTGAGGGCAGCGGGTAGCTCACCCGGCTCTCAGGAGCCCCGTGAGAGTGAAGCCCTTCTCA
 GCACCCATGATCTCAACAGAGAGTACCCGGCCCTCCCACTTCCAGGACGTTCCGGCTGATTGAGTTG
 ACATCTTGGGCTCTGGCATCAGCTTTGCTGCTGGTGTGATGTGGTGTGATTAGCCCTCAACTCGGCTGC
 CCATGTCCAGCGTTCTGCCAGGTGCTGGGCTGGACCCTGACCAGCTTTCATGCTGCAGCCGCGGGAG
 CCAGATGTCTCTCCCCACGAGGCTGCCCCAGCCCTGCTCCATGCGGCACCTCGTGTCCCACTACCTGG
 ACATCGCCAGCGTGCCTCGCCGCTCCTTCTTGAACCTCTGGCCTGTCTATCCCTCCATGAGCTGGAGCG
 GGAGAAGTGTGGAGTTCAGTTCTGCCAAGGCCAGGAGGAGCTTTGAATACTGCAACCGGCCCGC
 AGGACCATCTGGAGTGTCTGTGACTTCCCGCACACAGTCCGCCATCCCTCCGACTACCTGTTGG
 ACCTCATCCCCGTTATCCGGCCGAGGGCCTTCTCCATCGCCTCCTCGCTGCTGATCCTCGTGTAGT
 GCAGTTCCAGACTCGCCTCAAGGAGCCCGCGGGCCTCTGCTCCTCGGCTGGCATCCCTGGACCT
 GGGCAAGGACCTGTCCGGTGCCTCTGGGTGCGGCCTGGGAGTCTGGCCTTCCAGAGACACCAGACA
 CACCTGTGATCATGGTGGGCTGGCACTGGGGTAGCCCCCTTCCGAGCAGCCATCCAGGAGCGTGTGGC
 CCAGGGCCAGACTGGAACTTCTGTTTTTGGCTGCCGCTGGCGGGACCAAGACTTCTACTGGGAGGCT
 GAGTGGCAGGAGCTGGAGAAGCGGGACTGTCTGACCTCATCCCTGCCTTCTCCCGGAACAGGAGCAGA
 AAGTATATGTGCAGCACCAGGCTCCGGGAGTGGGGTGGCTGTGTGGAACTGCTGGACCCAGGGTGC
 ATACTTCTACCTGGCAGGCAACGCCAAGTCCATGCCAGCGGACGCTCTCGAAGCCCTGATGTCCATCTC
 CAGGAGGAGGTTGACTCTGCAGCCCGACGACCGCGTATCTAGCCAGGCTCCAGCAGACACGGCGCT
 TCCAGACAGAGAGCTGGGCC

ACGCGTACGCGGCCGCTCGAGCAGAAACTCATCTCAGAAGAGGATCTGGCAGCAAATGATATCCTGGATT
 ACAAGGATGACGACGATAAGGTTTAA

Protein Sequence:

>RC226649 representing NM_001144028
 Red=Cloning site Green=Tags(s)

MPSPQLLVLFQSQTGTAQDVSERLGREARRRRLGCRVQALDSYPVVNLINELVIFVCATTGQGDPPDNM
 KNFWRIFFRKNLPSTALCQMDFAVLGLGDSSYAKFNFAKHLHRRLLQLGGSALLPVCLGDDQHELGPDA
 AVDPWLRDLWDRVLGLYPPPPGLTEIPPGVPLPSKFTLLFLQEAPSTGSEQRVAHPGSQEPPESEKPFLL
 APMISNQRTVTPSHFQDVRLEIFDILGSGISFAAGDVVLIQPSNSAAHVQRFCQVLGLDPDQLFMLQPRE
 PDVSSPTRLPPQCSMRHLVSHYLDIASVPRRSFELLACLHELEREKLLFSSAQGEELFEYCNRPR
 RTILEVLCDPHTAAAIPPDYLLDLIPVIRPRAFSIASSLLILVAVVQFQTRLKEPRRGLCSSWLASLDP
 GQGPVVRVPLWVRPGLAFPETPDPVIMVPGTGVAPFRAAIQERVAQQQTGNLFFGCRWRDQDFYWEA
 EWQELEKRDCLTIPAFSREQEYVYVQHRLRELGSLVWELLDRQGAYFVLAGNAKSMADVSEALMSIF
 QEEGGLCSPDAAAYLARLQQTRRFQETWA

TRTRPLEQKLISEEDLAANDILDYKDDDDKV

Chromatograms:

https://cdn.origene.com/chromatograms/mk8068_g02.zip

Restriction Sites: SgfI-MluI

Cloning Scheme:



ACCN: NM_001144028

ORF Size: 1770 bp

OTI Disclaimer: The molecular sequence of this clone aligns with the gene accession number as a point of reference only. However, individual transcript sequences of the same gene can differ through naturally occurring variations (e.g. polymorphisms), each with its own valid existence. This clone is substantially in agreement with the reference, but a complete review of all prevailing variants is recommended prior to use. [More info](#)

OTI Annotation: This clone was engineered to express the complete ORF with an expression tag. Expression varies depending on the nature of the gene.

Components: The ORF clone is ion-exchange column purified and shipped in a 2D barcoded Matrix tube containing 10ug of transfection-ready, dried plasmid DNA (reconstitute with 100 ul of water).

- Reconstitution Method:
1. Centrifuge at 5,000xg for 5min.
 2. Carefully open the tube and add 100ul of sterile water to dissolve the DNA.
 3. Close the tube and incubate for 10 minutes at room temperature.
 4. Briefly vortex the tube and then do a quick spin (less than 5000xg) to concentrate the liquid at the bottom.
 5. Store the suspended plasmid at -20°C. The DNA is stable for at least one year from date of shipping when stored at -20°C.

RefSeq: [NM_001144028.3](#)

RefSeq ORF: 1773 bp

Locus ID: 27158

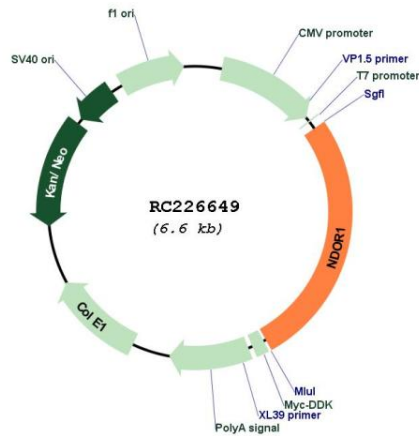
UniProt ID: [Q9UHB4](#)

Cytogenetics: 9q34.3

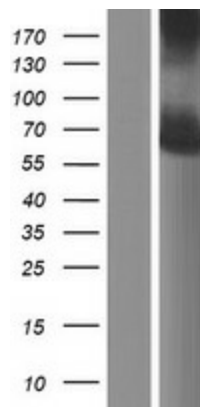
MW: 65.8 kDa

Gene Summary: This gene encodes an NADPH-dependent diflavin reductase that contains both flavin mononucleotide (FMN) and flavin adenine dinucleotide (FAD) binding domains. The encoded protein catalyzes the transfer of electrons from NADPH through FAD and FMN cofactors to potential redox partners. Alternative splicing results in multiple transcript variants. [provided by RefSeq, Mar 2012]

Product images:



Circular map for RC226649



Western blot validation of overexpression lysate (Cat# [LY428475]) using anti-DDK antibody (Cat# [TA50011-100]). Left: Cell lysates from untransfected HEK293T cells; Right: Cell lysates from HEK293T cells transfected with RC226649 using transfection reagent MegaTran 2.0 (Cat# [TT210002]).