

Product datasheet for **RC226645**

NEDD4 2 (NEDD4L) (NM_001144969) Human Tagged ORF Clone

Product data:

Product Type:	Expression Plasmids
Product Name:	NEDD4 2 (NEDD4L) (NM_001144969) Human Tagged ORF Clone
Tag:	Myc-DDK
Symbol:	NEDD4 2
Synonyms:	hNEDD4-2; NEDD4-2; NEDD4.2; PVNH7; RSP5
Mammalian Cell Selection:	Neomycin
Vector:	pCMV6-Entry (PS100001)
E. coli Selection:	Kanamycin (25 ug/mL)



[View online »](#)

ORF Nucleotide Sequence:

>RC226645 representing NM_001144969
 Red=Cloning site Blue=ORF Green=Tags(s)

TTTTGTAATACGACTCACTATAGGGCGGCCGGAATTCGTGACTGGATCCGGTACCGAGGAGATCTGCC
 GCC**CGCATCGCC**

ATGAGACGCTCGCATTGAGCAGGGAGAGTCCCGTATTCTCAGAGTAAAAGTTGTTTCTGGAATTGATC
 TCGCCAAAAGGACATCTTTGGAGCCAGTGATCCGTATGTGAAACTTTCATTGTACGTAGCGGATGAGAA
 TAGAGAATTGCTTTGGTCCAGACAAAAACAATAAAAAGACACTGAACCCAAAATGGAATGAAGAATTT
 TATTTACAGGTAACCCATCTAATCACAGACTCCTATTTGAAGTATTTGACGAAAATAGACTGACACGAG
 ACGACTTCTGGGCCAGGTGGACGTGCCCTTAGTCACCTCCGACAGAAGATCCAACCTGGAGCGACC
 CTATACATTTAAGGACTTCTCCTCAGACCAAGAAGTCATAAGTCTCGAGTTAAGGGATTTTTCGATTG
 AAAATGGCCTATATGCCAAAAATGGAGGTCAAGATGAAGAAAACAGTGACCAGAGGGATGACATGGAGC
 ATGGATGGGAAGTTGTTGACTCAAATGACTCGGCTTCTCAGCACCAAGAGGAACCTCCTCCTCCTCTCT
 GCCTCCCGGGTGGGAAGAAAAGTGGACAATTTAGGCCGAACCTACTATGTCAACCACAACAACCCGACC
 ACTCAGTGGCACAGACCAAGCCTGATGGACGTGTCTCGAGTCCGACAATAACATCAGACAGATCAACC
 AGGAGGCAGCACACCGGCGCTTCCGCTCCCGCAGGCACATCAGCGAAGACTTGGAGCCCGAGCCCTCGGA
 GGGCGGGGATGTCCCGAGCCTTGGGAGACCATTTAGAGGAAGTGAATATCGCTGGAGACTCTCTCGGT
 CTGGCTGTGCCCCACCACCGCCTCCCGAGGATCTCGGACCAGCCCTCAGGAGCTGTGAGAGGAACATA
 GCAGAAGGCTTCAGATCACTCCAGACTCCAATGGGGAACAGTTGAGCTCTTTGATTCAAAGAGAACCCTC
 CTCAGGTTGAGGTATGCAGTGTACCCGACGCAGTTGCAGAACAGGGCCATCTACCACCGCCATCAGTG
 GCCTATGTACATACCACGCCGGTCTGCCTCAGGCTGGGAAGAAAAGAAAAGTGAAGGGCGCCAT
 ACTATGTCAATCATAACAATCGAACCAACTTGGACTCGACTATCATGCAGCTTGCAGAAGATGGTGC
 GTCCGGATCAGCCACAAACAGTAACAACCATCTAATCGAGCCTCAGATCCGCCGGCCTCGTAGCCTCAGC
 TCGCCAACAGTAACCTTATCTGCCCGCTGGAGGGTGCCAAGGACTCACCCGTACGTGCGGCTGTGAAAG
 ACACCTTTTCAAACCCACAGTCCCACAGCCATCACCTTACAACCTCCCCAAAACCACAACACAAAGTCAC
 ACAGAGCTTCTTGCCACCCGGCTGGGAAATGAGGATAGCGCAAACGGCCGGCCTTCTTATTGATCAT
 AACACAAAGACTACAACCTGGGAAGATCCACGTTTGAATTTCCAGTACATATGCGGTCAAAGACATCTT
 TAAACCCCAATGACCTTGGCCCCCTTCTCCTGGCTGGGAAGAAAGAATTCAGTTGGATGGCCGAACGTT
 TTATATTGATCATAATAGCAAAATTAAGCAGAAATATGACTACTTCAGGAAGAAATTAAGAAACCTG
 CCGGCTGTCCCTACTCCAGAGAATTTAAGCAGAAATATGACTACTTCAGGAAGAAATTAAGAAACCTG
 CTGATATCCCAATAGGTTTGAATGAAACTTCACAGAAATAACATATTTGAAGAGTCTATCGGAGAAT
 TATGTCCGTGAAAAGACCAGATGTCCTAAAAGCTAGACTGTGGATTGAGTTTGAATCAGAGAAAAGTCTT
 GACTATGGGGGTGTGGCCAGAGAATGGTCTTCTTACTGTCCAAAGAGATGTTCAACCCCTACTACGGCC
 TCTTTGAGTACTCTGCCACGGACAACACTACACCTTCAGATCAACCCATAATCAGGCCTCTGTAATGAGGA
 TCATTTGCTCACTTCACTTTTATTGGAAGAGTTGCTGGTCTGGCCGATTTTCATGGGAAGCTCTTAGAT
 GGTTTCTTATTAGACCATTTTACAAGATGATGTTGGGAAAGCAGATAACCCTGAATGACATGGAATCTG
 TGGATAGTGAATATTACAACCTTTTGAATGGATCCTGGAGAATGACCCTACTGAGCTGGACCTCATGTT
 CTGCATAGACGAAGAAAACCTTTGGACAGACATATCAAGTGGATTTGAAGCCCAATGGGTGAGAAATATG
 GTCACAAATGAAAACAAAAGGGAATATATCGACTTAGTCATCCAGTGGAGATTTGTGAACAGGGTCCAGA
 AGCAGATGAACGCCTTCTTGGAGGGATTACAGAACTACTTCTATTGATTTGATTAATAATTTTGTATGA
 AAATGAGCTGGAGTTGCTCATGTGCGGCCTCGGTGATGTGGATGTGAATGACTGGAGACAGCATTCTATT
 TACAAGAACGGCTACTGCCCAAACACCCCGTCATTTCAGTGGTCTGGAAGGCTGTGCTACTCATGGACG
 CCGAAAAGCGTATCCGGTACTGCAGTTTGTACAGGGACATCGCGAGTACCTATGAATGGATTTGCCGA
 ACTTTATGGTTCCAATGGTCTCAGCTGTTTACAATAGAGCAATGGGCGAGTCTGAGAACTGCCGAGA
 GCTCACACATGCTTAAATCGCCTGACTTACCTCCATATGAAACCTTTGAAGATTTACGAGAGAACTTC
 TCATGGCCGTGAAAATGCTCAAGGATTTGAAGGGGTGGAT

ACGCGTACGCGGCCGCTCGAGCAGAACTCATCTCAGAAGAGGATCTGGCAGCAAATGATATCCTGGATT
 ACAAGGATGACGACGATAAGGTTTAA

Protein Sequence: >RC226645 representing NM_001144969
 Red=Cloning site Green=Tags(s)

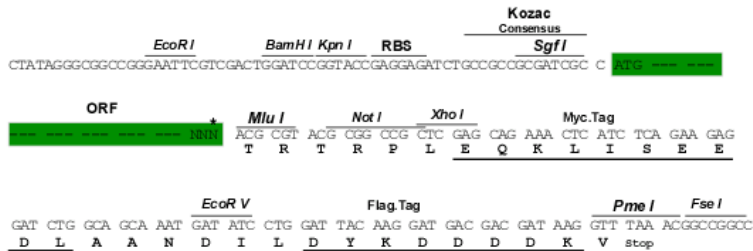
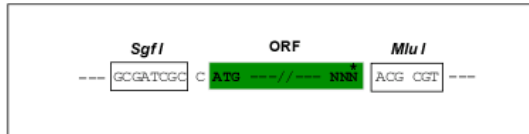
MRRLAFEQGESRILRVKVVSGIDLAKKDIFFGASDPYVKLSLYVADENRELALVQTKTIKKTLNPKWNEEF
 YFRVNPNSHRLLEFVFDENRLTRDDFLGQVDVPLSHLPTEDPTMERPYTFKDFLLRPRSHKSRVKGFLRL
 KMAYMPKNGGQDEENSQDRDDMEHGWEVVDSDNSASQHQEELPPPPLPGWEEKVDNLGRTYVYVHNHNR
 TQWHRPSLMDVSESDNNIRQINQEAHRRFRSRRHISEDLEPEPSEGGDVPEPWETISEEVNIAGDSL
 LALPPPPASPGSRTSPQELSEELSRRLQITPDSNGEQFSSLIQREPSSRLRSCSVTDAVAEQGHLPPPSV
 AYVHTTGLPSGWEERKDAKGRTYVYVHNHNRRTTWTWPIMQLAEDGASGSATNSNNHLIEPQIRRPRLS
 SPTVTLSAPLEGAKDSPVRAVKDTLSNPQSPQSPYNSPKPQHKVTQSFLPPGWEMRIAPNGRPFIDH
 NTKTTTWEPRKFPVHMRSKTSLNPNDLGPLPGWEERIHLDGRIFYIDHNSKITQWEDPRLQNPAITG
 PAVPYSREFKQKYDYFRKKLKKPADIPNRFEMKLHRNNIFEESYRRIMSVKRPDVLKARLWIEFESEKGL
 DYGGVAREWFFLLSKEMFNYYGLFEYSATDNYTLQINPNSGLCNEDHLSYFTF IGRVAGLAVFHGKLLD
 GFFIRPFYKMLGKQITLNDMESVDSEYNSLKWILENDPTELDLMFCIDEENFGQTYQVDLKPNGSEIM
 VTNENKREYIDLVIQWRFVNRVQKQMAFLGFTTELLPIDLIKIFDENELELLMCGLDGDVDVNDWRQHSI
 YKNGYCPNHPVIQWFKAVLLMDAEKRIRLLQFVTGTSRVPMNGFAELYSNGPQLFTIEQWGSPEKLP
 AHTCFNRLLDLPYETFEDLREKLLMAVENAQGFEGVD

TRTRPLEQKLISEEDLAANDILDYKDDDDKV

Restriction Sites: SgfI-MluI

Cloning Scheme:

Cloning sites used for ORF Shuttling:



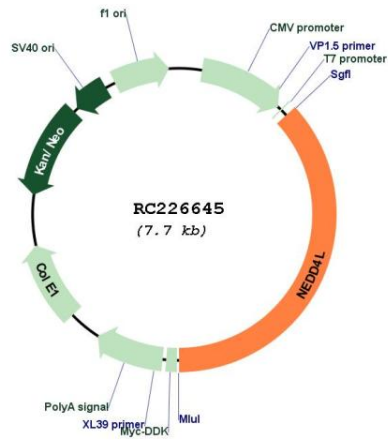
* The last codon before the Stop codon of the ORF

ACCN: NM_001144969

ORF Size: 2841 bp

OTI Disclaimer:	The molecular sequence of this clone aligns with the gene accession number as a point of reference only. However, individual transcript sequences of the same gene can differ through naturally occurring variations (e.g. polymorphisms), each with its own valid existence. This clone is substantially in agreement with the reference, but a complete review of all prevailing variants is recommended prior to use. More info
OTI Annotation:	This clone was engineered to express the complete ORF with an expression tag. Expression varies depending on the nature of the gene.
Components:	The ORF clone is ion-exchange column purified and shipped in a 2D barcoded Matrix tube containing 10ug of transfection-ready, dried plasmid DNA (reconstitute with 100 ul of water).
Reconstitution Method:	<ol style="list-style-type: none">1. Centrifuge at 5,000xg for 5min.2. Carefully open the tube and add 100ul of sterile water to dissolve the DNA.3. Close the tube and incubate for 10 minutes at room temperature.4. Briefly vortex the tube and then do a quick spin (less than 5000xg) to concentrate the liquid at the bottom.5. Store the suspended plasmid at -20°C. The DNA is stable for at least one year from date of shipping when stored at -20°C.
RefSeq:	NM_001144969.2
RefSeq ORF:	2844 bp
Locus ID:	23327
UniProt ID:	Q96PU5
Cytogenetics:	18q21.31
Protein Families:	Druggable Genome
Protein Pathways:	Endocytosis, Ubiquitin mediated proteolysis
MW:	109.2 kDa
Gene Summary:	This gene encodes a member of the Nedd4 family of HECT domain E3 ubiquitin ligases. HECT domain E3 ubiquitin ligases transfer ubiquitin from E2 ubiquitin-conjugating enzymes to protein substrates, thus targeting specific proteins for lysosomal degradation. The encoded protein mediates the ubiquitination of multiple target substrates and plays a critical role in epithelial sodium transport by regulating the cell surface expression of the epithelial sodium channel, ENaC. Single nucleotide polymorphisms in this gene may be associated with essential hypertension. Alternatively spliced transcript variants encoding multiple isoforms have been observed for this gene. [provided by RefSeq, Mar 2012]

Product images:



Circular map for RC226645