

## Product datasheet for **RC226643**

### MTMR11 (NM\_001145862) Human Tagged ORF Clone

#### Product data:

Product Type:	Expression Plasmids
Product Name:	MTMR11 (NM_001145862) Human Tagged ORF Clone
Tag:	Myc-DDK
Symbol:	MTMR11
Synonyms:	CRA
Mammalian Cell Selection:	Neomycin
Vector:	pCMV6-Entry (PS100001)
E. coli Selection:	Kanamycin (25 ug/mL)



[View online »](#)

**ORF Nucleotide  
Sequence:**

>RC226643 representing NM\_001145862  
 Red=Cloning site Blue=ORF Green=Tags(s)

TTTTGTAATACGACTCACTATAGGGCGGCCGGGAATTCGTCGACTGGATCCGGTACCGAGGAGATCTGCC  
 GCC**GCGATCGCC**

ATGTGGTGGGGGGCCGGGGCCAGAGTTTCAACATTGCCCCCAAGGAGGAGCCAGAGATGGGGTCTG  
 TCCAGGAAAATAGGATGCCGGAGCCAGGAGTCGTAGCCTAGCAGTTGCCTGGCCTCCAGATGCCCTCC  
 AGGGGAGCAGATCCTAGCATGGGCCCCAGGGGTGAGGAAGGGCCTGGAACCAGAATTGTCTGGAACCCTG  
 ATCTGTACCAACTTTAGGGTACCTTCCAGCCCTGTGGATGGCAGTGGAATCAGGACACTCCCTTGAACA  
 GTGAATACGATTTTGCCTGGTCAACATTGGACGATTAGAGGCTGTGAGCGGCTTGTCCCGAGTCCAGCT  
 CCTCCGTCAGGGTCCCTGCATAAATTTATCCCTGAGGAGATTCTGATTCATGGCCGAGACTTCCGGCTG  
 CTCAGAGTTGGTTTTGAGGCTGGAGCCTAGAGCCTCAGGCTTTTCAGGTGACCATGGCCATTGTCCAAG  
 CCAGAGCTCAGAGCAATCAAGCCCAACAGTATTCGGGGATAACCCTGAGCAAGGCTGGCCAGGGTCTGG  
 CTCAGAAAACCAATTCCTCTCATGGAGACAGCGGAAGACTGGGAGACTGAGCGGAAGAAGCAGGCA  
 GCCAGAGGCTGGAGGGTCAACGAGAGGTTGACGTAGCCACCAGCCTCCCCCGTTACTTCT  
 GGGTCCCTAACCGAATTCGTGACAGTGAGGTGAGGAGAGCATTGGCCACTTTTCATCAGGGCCGTGGACC  
 GCGCTTGTCTGGCATCACCTGGGGCAGTGATCTTCTCCGCTGTGGAGGCTTCTATACAGCCAGTGAC  
 CCTAACAGGAGGATATCAGAGCAGTGGAGTTGATGCTCCAGGCTGGGCATTAGATGTTGTCTGGTAG  
 ACATAATGGATGAGCTGCCAGCCTTGCAGATGTCCAATTGCCACCTGAGGCTGAGGGCCCTCTGCCT  
 GCCTGATTCATCTGTAGCTGAGGATAAATGGCTTTCAGCCCTGGAAGAACACAGTGGCTGGACTATGTC  
 AGGGCTTGTCTTCAAAGGCCAGTGACATTTTCAGTATTAGTGACATCCAGGGTTCGTTCTGTAATACTTC  
 AAGAGCGCGGTGATCGTATCTCAATGGCTCCTCTTCACTCCAGCTGCTTTCAGCCCCCAGGCA  
 CCGAACACTGTTTGGCTTCCAATCACTAGTACAGCGAGAGTGGGTGGCAGCTGGACATCCCTTCCGACT  
 CGGCTTGGGGAACTGGGGCCAGTGAAGAGGCTCCGGTGTCTCCTCTTCTTCTGATTGTGTCTGGCAGC  
 TCCTCCAGCAGTTCCAGCTGATTTTGAATTCCTGAGTTTTTCTTCTTCTGCTTTCATGACAGTGTGAG  
 GGTTCTGACACCCTTACCTTCCGAGAAATACCCCTGGGAGCGCGAAAGCAGAGCGGACAGTAAAC  
 TCCTATACACAAGTCTACACCCAGGATACTCCAGCCTCCAGCTGGGAACTCTTTAACCTGCAGCTGT  
 CTGTCTGGGACTGGGATTTACGTTATAGCAATGCACAGATACTACAATCCAGAATCCTGGCTATGACCC  
 AGAACACTGTCCAGATTCCTGGCTCCCTAGACCACAGCCAAGCTTCATGGTTCTGGACCCCCAGTTCT  
 GTGTGGCTCTTCTAGAGGAGCATTGACCCCTGAATCAGCTCTGCTTGGCGGGACAGTCCCTCCC  
 TGCTGGCAGTCTTCTCGTTGGCTCCCTCGACCTGCTATCTCCTCTGAAAGCCTGGCTGACCAGGAATG  
 GGGTCTCCCTCACATTGGGGAGCTTGCCCTTACCTCCAGGGCTGCTGCTGCCTGGGTATCTGGGACCC  
 CAGATCAGGCTCTGGAGACGCTGCTACCTGAGGGGAAGGCTGAGGTCCAGATGGGCTCTCAGCTCCCA  
 CAATCTCTGGCCTCCAGGATGAGCTATCCCATCTTCAAGGATTATTACGGAAATGGACACCAAGAATATC  
 TCCTGAGGATCACTCCAAGAAAAGAGATCCACATACCATTCTCAATCCCCTGAAATTGCTGGCATTCTC  
 AAAGGCAGGGCAGAGGGGATCTGGGG

**ACGCGT**ACGCGGCCGCTCGAGCAGAACTCATCTCAGAAGAGGATCTGGCAGCAAATGATATCCTGGATT  
 ACAAGGATGACGACGATAAGGTTTAA

**Protein Sequence:** >RC226643 representing NM\_001145862  
Red=Cloning site Green=Tags(s)

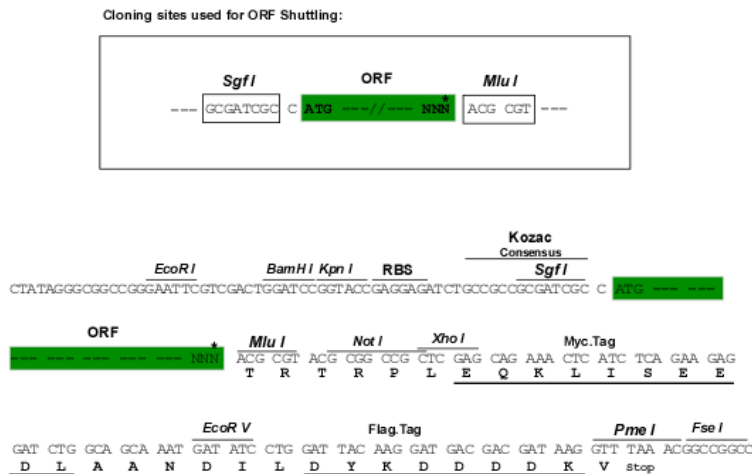
MWWGGRGQSFNIA PQKEEPMGSVQENRMPEPRSRQPSSCLASRCLPGEQILAWAPGVRKGLEPELSGTL  
 ICTNFRVTFQPCGWQWNQDTPLNSEYDFALVNI GRLEAVSGLSRVQLLRPGSLHKFIPEEILIHGRDFRL  
 LRVGF EAGGLEPQAFQVTMAIVQARAQSNQAQQYSGITLSKAGQSGSRKPP IPLMETAEDWETERKKQA  
 ARGWRVSTVNERFDVATSLPRYFVWPNRILDSEVRRAFGHFHQGRGPRLSWHHPGGSDLLRCGGFYTASD  
 PNKEDIRAVELMLQAGHSDVVLVDTMDELPSLADVQLAHLRLRALCLPDSSVAEDKWL SALEGTRWLDYV  
 RACLRKASDISVLVTSRVRSVILQERGDRLNGLLSSLVQLLSAPEARTLFGFQSLVQREWVAAGHPFLT  
 RLGGTGASEEAPVFLFLDCVWQLLQQFPADFEFSEFFLLALHDSVRVPD TLTFLRNTPW ERGKQSGQLN  
 SYTQVYTPGYSQPPAGNSFNLQLSVWDWDLRYSNAQILQFQNPGYDPEHCPD SWLPRPQPSFMPVGPSS  
 VWLFSRGALTPLNQLCPWRDPSLLAVSSRWLPRPAISSESLADQEWGLPSHWGACLP PGLLLPGYLG P  
 QIRLWRCYLRGRPEVQMGLSAPTISGLQDEL SHLQELLRKWTPRISPEDHSKKRD PHTILNPTEIAGIL  
 KGRAEGDLG

TRTRPLEQKLISEEDLAANDILDYKDDDDKV

**Chromatograms:** [https://cdn.origene.com/chromatograms/mk8031\\_b03.zip](https://cdn.origene.com/chromatograms/mk8031_b03.zip)

**Restriction Sites:** Sgfl-MluI

**Cloning Scheme:**



\* The last codon before the Stop codon of the ORF

**ACCN:** NM\_001145862

**ORF Size:** 2127 bp

**OTI Disclaimer:** The molecular sequence of this clone aligns with the gene accession number as a point of reference only. However, individual transcript sequences of the same gene can differ through naturally occurring variations (e.g. polymorphisms), each with its own valid existence. This clone is substantially in agreement with the reference, but a complete review of all prevailing variants is recommended prior to use. [More info](#)

**OTI Annotation:** This clone was engineered to express the complete ORF with an expression tag. Expression varies depending on the nature of the gene.

**Components:** The ORF clone is ion-exchange column purified and shipped in a 2D barcoded Matrix tube containing 10ug of transfection-ready, dried plasmid DNA (reconstitute with 100 ul of water).

**Reconstitution Method:**

1. Centrifuge at 5,000xg for 5min.
2. Carefully open the tube and add 100ul of sterile water to dissolve the DNA.
3. Close the tube and incubate for 10 minutes at room temperature.
4. Briefly vortex the tube and then do a quick spin (less than 5000xg) to concentrate the liquid at the bottom.
5. Store the suspended plasmid at -20°C. The DNA is stable for at least one year from date of shipping when stored at -20°C.

**RefSeq:** [NM\\_001145862.2](#)

**RefSeq ORF:** 2130 bp

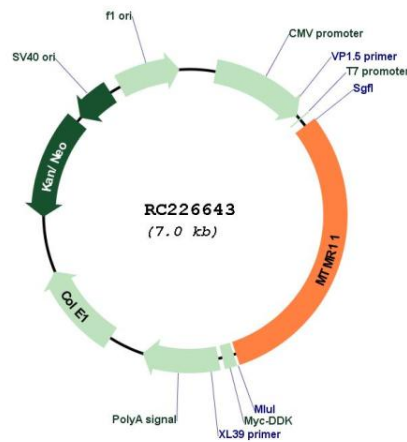
**Locus ID:** 10903

**UniProt ID:** [A4FU01](#)

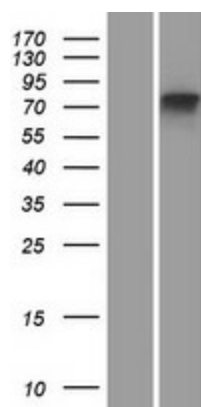
**Cytogenetics:** 1q21.2

**MW:** 79.4 kDa

**Product images:**



Circular map for RC226643



Western blot validation of overexpression lysate (Cat# [LY429039]) using anti-DDK antibody (Cat# [TA50011-100]). Left: Cell lysates from untransfected HEK293T cells; Right: Cell lysates from HEK293T cells transfected with RC226643 using transfection reagent MegaTran 2.0 (Cat# [TT210002]).