

Product datasheet for **RC226641**

PATL2 (NM_001145112) Human Tagged ORF Clone

Product data:

Product Type:	Expression Plasmids
Product Name:	PATL2 (NM_001145112) Human Tagged ORF Clone
Tag:	Myc-DDK
Symbol:	PATL2
Synonyms:	hPat1a; OOMD4; Pat1a
Mammalian Cell Selection:	Neomycin
Vector:	pCMV6-Entry (PS100001)
E. coli Selection:	Kanamycin (25 ug/mL)



[View online »](#)

ORF Nucleotide Sequence:

>RC226641 representing NM_001145112
 Red=Cloning site Blue=ORF Green=Tags(s)

TTTTGTAATACGACTCACTATAGGGCGGCCGGGAATTCGTCGACTGGATCCGGTACCGAGGAGATCTGCC
 GCC**CGGATCGCC**

ATGAATTGCCTTGAAGGGCCAGGTAAGACCTGTGGCCCCTGGCTTCTGAGGAGGAGCTGGTGTCTGCCT
 GCCAGTTGGAAAAAGAAGAGAATGAAGGGGAGGAGGAAGAGGAGGAGGACGAGGAGGATCTGGA
 CCCAGATCTGGACCCAGACCTAGAGGAGGAAGAGAATGATCTTGGGGATCCAGCTGTACTTGGTGTCTGTC
 CACAACACCCAGAGAGCTCTGCTTAGCTCCCCTGGAGTCAAGGCCCTGGTATGCTGGGAATGCTACTTGT
 CCTCCTTGCATTTTCTGTGGCAGACCTTGGACTACCTGTCGCCCATCCCTTTCTGGCCTACATTTCCAG
 CACCAGCTCTCCAGCACAGCACTTTGGACCTCGGCTGCCCTCACCAGACCAACTCTCTTCTGCAGCCTG
 CTGACCTCGTGGCCCCCTAGGTTCACTCATCTGACCCAGCTCCACCCTCGGCACCAACGAATCTTGCAGC
 AGCAGCAGCATAGTCAAACACCAAGTCCCCAGCCAAGAAGCCTTGGTCTCAGCAGCCAGACCCCTATGC
 TAACCTCATGACCAGAAAAGAGAAGGACTGGGTGATAAAAGTGCAGATGGTGCAGCTGCAGAGTCAAAA
 CCCCAGCTGGATGACTACTATTACCAGGAATATTACCAGAAGCTAGAGAAGAAGCAGGCAGACGAAGAGC
 TACTTGGACGAAGAAACCGGGTTGAGTCCCTCAAGCTGGTAACGCCTTACATTCGGAAGGCAGAGGCTTA
 TGAGTCCGTGGTCCGAATCGAGGGTTCCCTGGGCCAGGTAGCTGTGTCGACATGCTTCAGCCCTCGCCGA
 GCTATTGATGCGGTACCCCATGGAACCTCAAGAGCAGGATAGAAAGTGCAGCAGTCAAGGCTTCGGG
 TATTATACCGGATTGAGAAGATGTTCTTCACTTACTAGAAAAGAGGAAAGGCTGGAAGTATAGGCCTCC
 ACCGCCCTGCTTTTCTGAGCAGCAAAGCAACAGGTTGAGAAGCTTCCAGACCTTAAAGACCCAGGAG
 CAGAACAACCTGGAAGAGGCAGCAGATGGCTTCTGCAGGTGCTCTCTGTGAGGAAGGGGAAGCCCTGG
 TGGCCCGGCTGCTCCCTTCTGCCAGGATCAGGCTGTTACCATTCTTTTGGCTATCACCACCATCT
 GCCCTCCTGGTCCGGAGGGATGTGGCTGATCAGGCCCTACAAATGTTATTCAAACCTCTGGGCAATGT
 ATTAGTCACTTGACCCTCCACGAACCTCCAAGGACTTCAGGGATTAACGCTGTTGCCACCTGGCTCCT
 CAGAGCGGCCAGTACCCTGGTCTCAGAATCAGTTTGAATATCTTTGCTCTATGCCCTGCTGAGCCA
 TGGGGAGCAACTGGTATCGCTGCATTCTCCCTAGAGGAACCAACAGTGACCATACAGCTTGGACAGAC
 ATGGTGGTTCTGATTGCCTGGGAGATAGCCAAATGCCTACAGCCTCTCTGGCAGAACCCTAGCTTTCC
 CCAGCAACCTACTTCCCCTGTTCTGTACCACGTGGACAAACAATTGGTTCAGCAGCTGGAGGCCAGGAT
 GGAGTTTGCCTGGATTAC

ACGCGTACGCGGCCGCTCGAGCAGAAACTCATCTCAGAAGAGGATCTGGCAGCAAATGATATCCTGGATT
 ACAAGGATGACGACGATAAGGTTTAA

Protein Sequence:

>RC226641 representing NM_001145112
 Red=Cloning site Green=Tags(s)

MNCLEGPVKTCGPLASEEELVSACQLEKEEENEHEEEEEDEEDLDPDLDPDLEEEENDLGDPAVLGAV
 HNTQRALLSSPGVKAPGMLGMSLASHFLWQTLDYLSPIPFWPTFPSTSSPAQHFGPRLPSPDPTLFCSL
 LTSWPPRFSHLTQLHPRHQRILQQQHSQTPSPPAKKPWSQQPDPYANLMTRKEKDWIKVMVQLQSAK
 PRLDDYYQYQYQKLEKKQADEELLGRRNRVESLKLVTPIPKAEAYESVVRIEGSLGQVAVSTCFSPRR
 AIDAVPHGTQEQIEAASSQRLRVLYRIEKMFLQLEIEEGWKYRPPPPCFSEQQSNQVEKLFQTLKTQE
 QNNLEEAADGFLQVLSVRKGGKALVARLLPFLPQDQAVTILLAIITHHLPLLVRRDVADQALQMLFKPLGKC
 ISHLTLHELLQGLQGLTLLPPGSSERPVTVVLQNFQGISLLYALLSHGEQLVSLHSSLEEPSNDHTAWTD
 MVVLIaweIAQMPTASLAePLAFPSNLLPLFCHHVdKQLVQQLearMEFAWIY

TRTRPLEQKLISEEDLAANDILDYKDDDDKV

Chromatograms:

https://cdn.origene.com/chromatograms/mk8031_b05.zip

Restriction Sites:

Sgfl-Mlul

Cloning Scheme:


ACCN: NM_001145112

ORF Size: 1629 bp

OTI Disclaimer: The molecular sequence of this clone aligns with the gene accession number as a point of reference only. However, individual transcript sequences of the same gene can differ through naturally occurring variations (e.g. polymorphisms), each with its own valid existence. This clone is substantially in agreement with the reference, but a complete review of all prevailing variants is recommended prior to use. [More info](#)

OTI Annotation: This clone was engineered to express the complete ORF with an expression tag. Expression varies depending on the nature of the gene.

Components: The ORF clone is ion-exchange column purified and shipped in a 2D barcoded Matrix tube containing 10ug of transfection-ready, dried plasmid DNA (reconstitute with 100 ul of water).

Reconstitution Method:

1. Centrifuge at 5,000xg for 5min.
2. Carefully open the tube and add 100ul of sterile water to dissolve the DNA.
3. Close the tube and incubate for 10 minutes at room temperature.
4. Briefly vortex the tube and then do a quick spin (less than 5000xg) to concentrate the liquid at the bottom.
5. Store the suspended plasmid at -20°C. The DNA is stable for at least one year from date of shipping when stored at -20°C.

Note: Plasmids are not sterile. For experiments where strict sterility is required, filtration with 0.22um filter is required.

RefSeq: [NM_001145112.1](#), [NP_001138584.1](#)

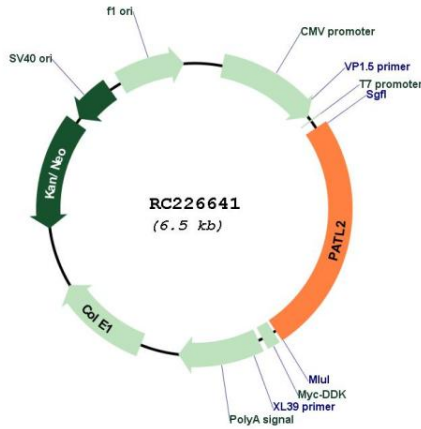
RefSeq ORF: 1632 bp

Locus ID: 197135

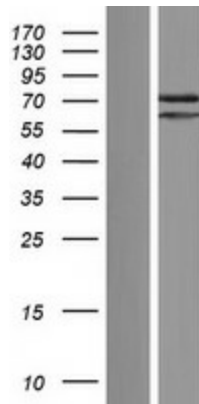
UniProt ID: [C9JE40](#)

Cytogenetics: 15q21.1
MW: 61.3 kDa
Gene Summary: RNA-binding protein that acts as a translational repressor.[UniProtKB/Swiss-Prot Function]

Product images:



Circular map for RC226641



Western blot validation of overexpression lysate (Cat# [LY428698]) using anti-DDK antibody (Cat# [TA50011-100]). Left: Cell lysates from untransfected HEK293T cells; Right: Cell lysates from HEK293T cells transfected with RC226641 using transfection reagent MegaTran 2.0 (Cat# [TT210002]).