

Product datasheet for RC226637

GREB1L (NM_001142966) Human Tagged ORF Clone

Product data:

Product Type:	Expression Plasmids
Product Name:	GREB1L (NM_001142966) Human Tagged ORF Clone
Tag:	Myc-DDK
Symbol:	GREB1L
Synonyms:	C18orf6; KIAA1772; RHDA3
Mammalian Cell Selection:	Neomycin
Vector:	pCMV6-Entry (PS100001)
E. coli Selection:	Kanamycin (25 ug/mL)
ORF Nucleotide Sequence:	>RC226637 representing NM_001142966 Red=Cloning site Blue=ORF Green=Tags(s)

TTTTGTAATACGACTCACTATAGGGCGGCCGGAATTCGTCGACTGGATCCGGTACCGAGGAGATCTGCC
GCC**CGATCGCC**

ATGGGGAATTCATATGCTGGGCAACTGAAATCTGCTCGATTTGAGGAAGCTCTCCACAACCTCATAGAAG
CCTCCCTCAGATGTAGTAGTGTGGTACCACGGCCAATTTTTCCAGCTATACCTGGACCCTGACCAGCA
TCCTTTCTCATCTGCAGATGTCAAACCAAGGTGGAGGATCTGGACAAAGATTTGGTAAACCGCTACACT
CAAAATGGAAGTCTGGATTTTCTAACAACTAACAGTTAATGAAATGGAAGATGATGAAGACGATGAAG
AAATGTCTGATCAAACAGCCCACTTCCCTATTCACAAAACTGCCCGAGAAGGATCTTGCACTAC
AGATGGTTTTGTCAAGCAGGAAAGGATTTGCGTTTTGGTATCACTGTGTATGGAACAAATTGACATCCCA
GCAGGATTCCTCCTGGTGGGGCCAAAGTCTCCCAATCTGCCTGAACACATCCTAGTTTGTCTGTGGACA
AGCGATTTCTACCAGATGATCATGGAAAAATGCACTTTTAGGGTTTTCTGGAAATTGTATCGGCTGTGG
AGAAAGAGGATTTTCGATATTTACGGAAATTTCCAACCACATTAAGTGAAGCTCACCCTCAGCCAAAG
AAGCAGAAGCACTTAAAGTACTACCTAGTCAGAAGCTCCAGGGTGTACTGTCTAAAGGACCTTTATCT
GCTGGAAAGAATGTAGAAGCCGACAATCCTCTGCTTCTTGCCACTCTATTAAGCCAAGCTCTTCAGTGTC
GTCAACTGTGACCCAGAAAATGGGACAATAATGGATACAAATCAGGATTCCTCAGACAGATGCTGCT
AATGGAAACAGTAGCCATGGAGGGAAGGGCAGTGCATCCAGCTCCACTCCAGCCACACAGGGAATTACT
CTTTGTCACCACGACCTAGCTATGCATCAGGAGATCAAGCTACCATGTTCAATTTCTGGGCCACCAAGAA
ACGACACCCGGGATGGTATCCTGGGTACCTCTCCCCAACCTGGCTTAGTTGTACCTGTCCCTACAGTT
CGCCCTCTTTCAAGAACGGAGCCCTTTTATCTGCCCCAGTTCCACAGACCCCACTAACTGGAAATTTAC
AACCCAGGCCATTCTGCAGGGGAAACTGTAATTGTTCTGAAAACCTGCTGAGTAACTCAGGAGTTAG
ACCAGTAATTCTGATAGGCTATGGCACTTTACCCTATTTCTATGGAAATGTTGGTGACATTGTTGTGAGT
CCTCTGCTGGTGAATTGCTACAAGATTCACAGTTGGAAAACAAAGATTTGGAAAATAGGGTTGACCC
GCAGCCAATTTCTGAGCGTGGAAAACATGATTCTCTGACGATACAGTATCTGTGCGGCTGGGCTCTGA
TCAGGTACCTCTCAGGGAAGAATTTGAGCAAATATGCTGAAAGCTATGCAAGAATTTACTCTGAGAGAA



[View online >](#)

AGAGCCCTGCAGATAGGTGCTCAGTGTGCCCTGTGTACCAGGACAACCTCCCCTGGCTTCTAGATTAA
TTGCCAGCGTATCTCAAGACTTGGTTTCATGTGGTTGTGACCCAGAACCTTTTGGCGGAGGGCATTTCAGA
GACCTTAAGGACTCTCAGTGAATGAGACACTATCAAAGGCTGCCAGATTATGTGGTGGTAAATTTGTGCA
TCGAAAATCAGAGGAAATGAATTTTGTGTGGTAGTGTAGGTGACACCAGTCCCAGCTCTGGCAGAGA
GCATGCTACCACAAGTGAATTTTGAAGAAATAGTTATGAGCTTATCACAGGAAAGGTGAGTTTCT
GGCATCACATTTCAAACACATCATTAGGCGATGACCTAGACAAGCTGCTGGAAAAATGCAACAAAGA
AGAGGAGACAGTGTGGTTACCCCTTTCGATGGAGACCTTAATGAATGTGTGTCAACCCAGGAGGCTGCTG
CTATGATTTCCACACAAAACCTGGATTTAGATAATGAAACCTTCCACATTTATCAACCCGAGCTAACAGT
TGCCAGAAAACCTTATCCCAGGTGTGTCTATAGCGGACAGTGGCAGCCAGAGCCTGGACCTCGGTGAC
TTCAGCAAAGTAGACTTCATCATCATTGTTCCAGATCGGAGGTGTTGGTTGAGCAAACCTTTCAGCGGA
TTCGACAAATCAGGTGTCCTTGTAGACTTGGGTCTGGAGGAAAAATGGGACAGCCCATCAGAGAGCAGAAAA
ATATGTTGTTGCTAGACAATGAGATTCAAACCAAGTTGAAGTTTTATGAGGAGAGTAAACAGAAC
CCGTACACACTGTTTGTGCTAGTTCATGACAACCTCCCATGTGGAACCTAACGAGTGCATTTGAGGCTCTT
TGTACATAGCGAACCCAGTCTGGGCTAGCTGATAGAGTCAATTAATGCAGAGAAGTTCTGGAAGCTTT
CAACCTCTGGTCTCCAGGTGAGTCTTCCCATACACTCTGCAGACCCAACAGTCCCAGATTAGTCTCT
AGCAATGAGGTTCACTGGATACAGCTGGATACTGGGGAGGACGTGGGCTGCGAGGAGAAGCTGTACTTTG
GCTTGAGTGAGTACAGCAAGTCTCTGCAGTGGGGATCACGAGCCCACTTCTGAGATGTGACGAGACTTT
TGAAAAATGGTGAACACACTCTTGAGAGGTTACCCAGGCTGCACAGCATGGTCTGTCGCTGCTATCTT
CTCATCCAGCAGTACTCTGAGGCCCTGATGGCTCTCACCACCATGGCGTCACTCCGCGACCACAGCACAC
CAGAAACACTCAGCATTATGGATGACCTCATCAGCTCCCAGGCAAAAACAAAAGTGGGAGGGGACACAT
GCTCATTATCAGGGTGCCTCGGTGCAGCTGGCGATGTTAGCCAAGGAGCGGCTACAGGAGGTGCGCGAC
AAACTGGGTCTGCAGTATCGGTTTGGATCATCCTTGGAAACCCGGCCACCGAAGTCACTGATTTGCAACTC
ACTTTGTGGCGGATTAAGAGTTGGAGAGGAAATGAACAGAGAGTGGATCCCTCGGATACCAAGAA
TTTAGACGGTCTACCTTGTATTGTGATTTAACTGGCAAAGATCCTCTTGAGAAAACCTTTCCAGGCTCT
TTGAAGTACTGTGACCTCCGTTAATTGACTCAAGCTATTTAACTCGCACGGCCTTGAGAGGAGGTGG
GTCTGGCATGCTGCTATGTCTAAAAGAGGTGATCCGGGGACCCACTGTTGCCCTGGACCTCAGCGGGAA
GGAGCAGGAGAGAGTGTGTGAGTGAATGACTCCGATGAGCTGCTCATCGACCTGGAGCGGCCCCAG
AGCAACAGCAGCGCTGTACAGGGACCTCGGTTCCATCATGGAGAATGGAGTGAAGTCTTCCAGCACAG
CTGACAAGTCCCAGAAGCAGTCCCTGACCCCACTTTCAGAGCCAGCCACCAGCTTGGGCTGGATGA
AGGGGTCTCCGCCAGCTCAGCTGGAGCCGAGCCGGGAGACTCTGAAGCAGGAATGTGACTCCCTGGGC
CCCCAGATGGCGAGCAGCACCTCCAAGCCGTATCATCATCCTCAGGACCCAGGACCTCCCATGGC
CGGGACAGCCCATCAGAGGCTGCCGGGGCCACAGGCAGCCCTGCCACCAGTGGTATCCTATCCAAGC
GGCCTACAGTCTCCTGGGCTCCCAGAAGAGTGGCAAGCTGCCATCCTCCTCCTCCTGCTGCCCCACGCC
GACGTGGCCTGGGTGAGCTCCCTGCGGCCACTCCTGAACAAGGACATGAGCAGTGAAGGAGCAGTCCCTCT
ACTACAGGCAAGTGGACCTTGGCCCGGCAGCACCGCTGACTATAGCAACCAGCTGGACCCGGCCTCTGG
CACCCGAAACTTCCACCCCGACGGCTCCTGCTGACAGGGCCCCACAGGTGGGAAAGACGGGCTCCTAT
TTACAGTTCCTCAGGATCCTCTCCGCATGCTCATCAGGCTCCTGGAGGTGGACGTGATGATGAGGAGG
AGATCAACACCGATCACAAATGAAAGCAGTGAAGTGAAGTGAAGTGAAGTGAAGTGAAGTGAAGTGAAGT
ACTGAGAAGCTGGCAGGGGTCAAACAAGAAGTGAATAAGGAATCCAAGTTGAAGAGCCAGGAAACGGG
AAACTGTATCCATAATGTGACCAAATATGACGCCTATAACACCTTTACCACCTGTGAACAGTGGCGCCA
GTACATGGACTTCACCTCTGCTCCAGATGTCTGACTCCACCCTTTCATGCCTTACATTCTCTTCTTCT
ATGCTGGGAGAAGAGGTTGAGTCTATTTTCATCATTCCCAAATCCAAGAGAGTCAATTTGCTTTCAGCA
AGCAGGGCAAGCACCTGGAGAGCATGCGGCTGCCCTGGTTTCAGACAAGAATTTGAATGCAGTCAAGAG
CCCTATTTTCACTCCTTCCAGTGGTGCATGAGCAGGACTCCTAAACCTTTTCCACGCCATGGAGGGC
ATCAGCCACCTTACCTCCTGGTGGTCAAAGAGTATGAGATGCCTCTGTACCGCAAGTACTGGCCCAACC
ACATCATGCTGGTCTTCCGGCATGTTCAATAATGCAGGCGTGGTGTGCCAGGTTCTCATCAAGGA
GCTATCATATCAACCTAGAATTTGGAGAGAAACCGCCTGGAGGAGCTAGGCATTAACCGCAGTGTGTC
TGGCCTTTCATCGTATGATGGATGACTCATGTGTCTATGGAACATTCAGAGTTCAGGAGCCATCCA
GCCAGCCCATGGAAGTAGGAGTTTCCAGTAAGAATGTGTCTTGAAGACTGTCTTGCAGCACATTGAAGC
CACACCAAAAATGTCCACTATGCAATCTTGGGCATACAGAAAATGGAGCAGCAAGCTGACTTCTCAGAGC
CTAAAGGCCCATTTCTAGGTGTCACGTGCATGATTTCTCTCCTCAACACAGACTTGACTCAGAATG

TGCAGTATGACTTCAACAGGTATTTCTGTGAAGATGCTGACTTTAATCTGAGAACAACAGTAGTGGCCT
 GCTCATCTGCCGCTTAACTTCACTCAGTCTCATGAAGAAACATGTTTCAGGTTGGAGGGCAAAGGGACTTT
 ATCATTAAACCAAAGATCATGGTGTGAGAGAGCTTAGCACCCATCTTGCCCTTCAATACATCTGTGCTC
 CCGACAGTGAACACACTACTGGCAGCCCTGCACAGTTTCTCTGGAGAAATTCCTTCAGCACGCCTC
 ATATAACTCTTCCCAAAGCCATCCATAACTTCAGGAGTCTGTGCTGGCCATTGACTGCTACCTTAAC
 ATTGGACCAGAGGTGGCCATATGCTATATCAGCTCCAGACCCACTCCAGCAATGCACTGTGAAGGGG
 TGTTTTTAGTGGACTCCTTTTGTACCTCTGTGACTCTTTTGTAGGTGCTGATCTTAAGAAATTTAAAT
 TCTAAAAGGTGTACACTGTGTGCATCTGCCAAGACAGAAGTTCTTGGCCAAACAATTGTCCGCTTA
 GAGCTAGAAGATGAGTGGCAGTTCGCCTCCGGGACGAGTTTCAAACGCTAACAGCAGTGATGACAAGC
 CTCTACTTTCTACTGGACGTCATGTA

ACGCGTACGCGGCCGCTCGAGCAGAAACTCATCTCAGAAGAGGATCTGGCAGCAATGATATCCTGGATT
 ACAAGGATGACGACGATAAGGTTTAA

Protein Sequence:

>RC226637 representing NM_001142966

Red=Cloning site Green=Tags(s)

MGNSYAGQLKSARFEEALHNSIEASLRCSVVPRPIFSQLYLDPDQHPFSSADVPKVEDLKDLDL VNRYT
 QNGSLDFSNL TVNEMEDDEDEEMSDSNPPIPYSQKPAPEGSCTTDFGCQAGKDLRLVSLCMEQIDIP
 AGFLLVGAKSPNLP EHLVCAVDKRFLLPDDHGKNALLGFSNGICGGERGFYRTEFSNHINLKLTTQPK
 KQKHLKYLVRSQGVLSKGPLICWKECRSRQSSASCHSIKPSVSSVSTVTPENGTNGYKSGFTQTDAA
 NGNSSHGKGSASSSTPAHTGNYSLSPRPSYASGDQATMFI SGPPKRRHRGWYPGSPLPQGLVVPVPTV
 RPLSRTEPLL SAPVPQTPLTGILQPRPIPAGETVIVPENLLSNSGVRPVILIGYGTLPYFYGNVGDIVVS
 PLLVNCYKIPQLENKDLEKLG TGSQFLSVENMILLTIQYLVRLGPDQVPLREEFEQIMLKAMQEFTLRE
 RALQIGAQCVPVSPGQLPWLARL IASVSQDLVHVVTQNSLAEGIS ETLRTLSEMRHYQLRDPYVVVICA
 SKIRGNEFCVVVLGQHQSRALESMLTTSEFLKEISYELITGKVSFLASHFKTTSGLDLDLLEKMQQR
 RGDVSVTPFDGDLNECVSPQEAAM IPTQNLDLNETFHIIYQPQLTVARKLLSQVCAIADSGSLSLDLGH
 FSKVDFI IIVPRSEVLVQQTQIRIRQSGVLVDLGL EENGTAHQRAEKYVVRDNEIQTKFEVFMRRVKQN
 PYTLFVLVHDNSHVELTSVISGSLSHSEPSHGLADRVINCREVLEAFNLLVLQVSSFYTLTQTSRIS
 SNEVHWIQLDTGEDVGC EEKLYFGLSEYSKSLQWGITSPLLRCD ETEFKMVNTLLERYPRLHSMVVRQYL
 LIQQYSEALMALTTMASLRDHSTPETLSIMDDL ISSPGKNKSGRGHMLIIRVPSVQLAMLAKERLQEV
 RDLGLQYRFEIILGNPATEL SVATHFVARLKS WRGNEPEEWIPRTYQDL DGLPCIVILTGKDPLGETFP
 RSLKYCDLRLIDSSYLTRTALEQEVGLACCYVSKEVIRGPTVALDLSGKEQERAAVSENDSDELLIDLERP
 QSNSSAVTGTSGSIMENGVSSSSTADKSQKQSLTPSFQSPATSLGLDEGVSASSAGAGAGETLKQECDSL
 GPMASSTTSKPSSSSGPRTL PWPQPIRGCRGPQAALPPVILSKAAYSLLGSQKSGKLPSSSSLLPHA
 DVAVWSSLRPLL NKDMSSEEQSLYRQWTLARQH HADYSNQLDPASGTRNFHPRLLL TGPPQVGTGTSY
 LQFLRILFRMLIRLLEVDVYDEEEINTDHNESSEVSQSEGEPPWDIESFSKMPFDVSVHDPKYSLSLVY
 TEKLAGVKQEVIKESKVEEPRKRETVS IMLTKYAA YNTFHHCEQCRQYMDFTSASQMSDSTLHAFTFSS
 SMLGEEVQLYFIIPKSKE SHFVFSKQGKHLESMRPLVSDKNLNAVKSPIFTPSSGRHEHGLLNLFHAMEG
 ISHLHLLVVKYEMPLYRKYWPNHIML VLPGMFNNAGVGAARFLIKELSYHNLELERNRLEELGIKRQCV
 WPFIVMMDSCVLWNIHSVQEPSSQPMVEGVSSKNVSLKTVLQHI EATPKIVHYAILGIQKWSKLSQS
 LKAPFSRCHVHDFILLNTDLTQNVQYDFNRYFCEDADFNLR TNSSGLL ICRFNNFSLMCKHVQVGGQRDF
 I IKPKIMVSESLAPILPLQYICAPDSEHTLLAAPAQFLLEKFLQHASYKLFPKAIHNFSPVLAIDCYLN
 IGPEVAICYISSRPHSSNVNCEGVFFSGLLLYL CDSFVGADLKKFKFLKGATLCVICQDRSSLRQTIVRL
 ELEDEWQFRLRDEFQTANSSDDKPLYFLTGRHV

TRTRPLEQKLI SEEDLAANDILDYKDDDDKV

Chromatograms:

https://cdn.origene.com/chromatograms/mk8031_b07.zip

Restriction Sites:

Sgfl-Mlul

Cloning Scheme:


ACCN: NM_001142966

ORF Size: 5769 bp

OTI Disclaimer: The molecular sequence of this clone aligns with the gene accession number as a point of reference only. However, individual transcript sequences of the same gene can differ through naturally occurring variations (e.g. polymorphisms), each with its own valid existence. This clone is substantially in agreement with the reference, but a complete review of all prevailing variants is recommended prior to use. [More info](#)

OTI Annotation: This clone was engineered to express the complete ORF with an expression tag. Expression varies depending on the nature of the gene.

Components: The ORF clone is ion-exchange column purified and shipped in a 2D barcoded Matrix tube containing 10ug of transfection-ready, dried plasmid DNA (reconstitute with 100 ul of water).

- Reconstitution Method:**
1. Centrifuge at 5,000xg for 5min.
 2. Carefully open the tube and add 100ul of sterile water to dissolve the DNA.
 3. Close the tube and incubate for 10 minutes at room temperature.
 4. Briefly vortex the tube and then do a quick spin (less than 5000xg) to concentrate the liquid at the bottom.
 5. Store the suspended plasmid at -20°C. The DNA is stable for at least one year from date of shipping when stored at -20°C.

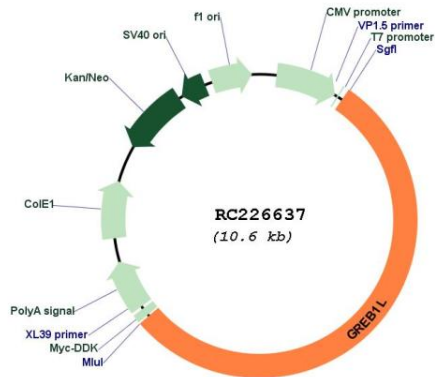
RefSeq: [NM_001142966.2](#)

RefSeq ORF: 5772 bp

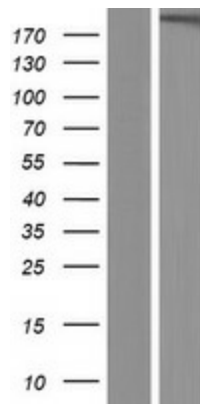
Locus ID: 80000

UniProt ID: [Q9C091](#)
Cytogenetics: 18q11.1-q11.2
MW: 214.2 kDa
Gene Summary: Plays a major role in early metanephros and genital development.[UniProtKB/Swiss-Prot Function]

Product images:



Circular map for RC226637



Western blot validation of overexpression lysate (Cat# [LY428308]) using anti-DDK antibody (Cat# [TA50011-100]). Left: Cell lysates from untransfected HEK293T cells; Right: Cell lysates from HEK293T cells transfected with RC226637 using transfection reagent MegaTran 2.0 (Cat# [TT210002]).