

Product datasheet for **RC226634**

DSN1 (NM_001145317) Human Tagged ORF Clone

Product data:

Product Type:	Expression Plasmids
Product Name:	DSN1 (NM_001145317) Human Tagged ORF Clone
Tag:	Myc-DDK
Symbol:	DSN1
Synonyms:	C20orf172; dj469A13.2; hKNL-3; KNL3; MIS13
Mammalian Cell Selection:	Neomycin
Vector:	pCMV6-Entry (PS100001)
E. coli Selection:	Kanamycin (25 ug/mL)
ORF Nucleotide Sequence:	>RC226634 representing NM_001145317 Red=Cloning site Blue=ORF Green=Tags(s)

TTTTGTAATACGACTCACTATAGGGCGCCGGGAATTCGTCGACTGGATCCGGTACCGAGGAGATCTGCC
GCC**CGATCGCC**

ATGACTTCAGTGACTAGATCAGAGATCATAGATGAGCTCAGCCGGTCTATCAGTGTGATTTAGCAGAAA
GCAAACGGCTTGGCTGTCTCCTGCTTTCCAGTTTCCAGTTCTCTATTCAGAACTTGAACCTTTCCTAAG
GGACACTAAGGGCTTCAGTCTTGAAGTTTTAGAGCCAAAGCATCTTCTTTCTGAAGAATTGAAACAT
TTTGCAGACGGACTGAAACTGATGGAAGCTACAAAAATGTTTTGAAGATTCAAATGGAAAAGCATCAG
ATTTTTCTTTGGAAGCATCTGTGGCTGAGATGAAGGAATACATAACAAAGTTTTCTTTAGAACGTCAGAC
TTGGGATCAGCTTGTCTCACTACCAGCAGGAGGCTAAAGAGATATTGTCCAGAGGATCAACTGAGGCC
AAAATTAAGTGAAGTCAAAGTGAACCTATGACATATCTTGGGTCTTCTCAGAATGAAGTTCTTAATACAA
AACCTGACTACCAGAAAATATTACAGAACCAGAGCAAAGTCTTTGACTGTATGGAGTTGGTGATGGATGA
ACTGCAAGGATCAGTGAACAGCTGCAGGCCTTATGGATGAAAGTACCCAGTGTCTCCAGAAGGTGCA
GTACAGCTCGAAAGAGAAGCATGCAACAATTAGATCCCTCACCAGCTCGAAAACGTTTGAAGCTTCAGC
TACAGAACCACCTGCCATACATGGATCTGGATCTGGATCTTGTCTCAG

ACGCGTACGCGGCCGCTCGAGCAGAAACTCATCTCAGAAGAGGATCTGGCAGCAAATGATATCCTGGATT
ACAAGGATGACGACGATAAGGTTTAA



[View online »](#)

Protein Sequence: >RC226634 representing NM_001145317
 Red=Cloning site Green=Tags(s)

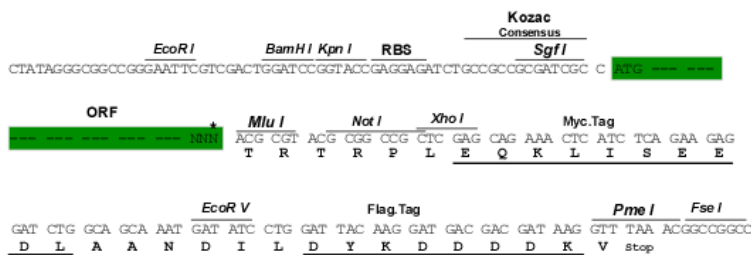
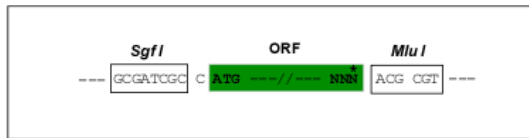
MTSVTRSEIIDELSRISVDLAESKRLGCLLLSSFQFSIQKLEPFLRDTKGFLESFRAKASSLSEELKH
 FADGLETDTLQKCFEDSNGKASDFSLEASVAEMKEYITKFSLERQTWDQLLLHYQQEAKEILSRGSTE
 KITEVKVEPMTYLGSSQNEVLNTPDYQKILQNQSKVFDCMELVMDLQGSVKQLQAFMDESTQCFQKVS
 VQLGKRSMQQLDPSARKLLKLQNPPIAHGSGSGSCQ

TRTRPLEQKLISEEDLAANDILDYKDDDDKV

Restriction Sites: Sgfl-MluI

Cloning Scheme:

Cloning sites used for ORF Shuttling:



* The last codon before the Stop codon of the ORF

ACCN: NM_001145317

ORF Size: 747 bp

OTI Disclaimer: The molecular sequence of this clone aligns with the gene accession number as a point of reference only. However, individual transcript sequences of the same gene can differ through naturally occurring variations (e.g. polymorphisms), each with its own valid existence. This clone is substantially in agreement with the reference, but a complete review of all prevailing variants is recommended prior to use. [More info](#)

OTI Annotation: This clone was engineered to express the complete ORF with an expression tag. Expression varies depending on the nature of the gene.

Components: The ORF clone is ion-exchange column purified and shipped in a 2D barcoded Matrix tube containing 10ug of transfection-ready, dried plasmid DNA (reconstitute with 100 ul of water).

Reconstitution Method:

1. Centrifuge at 5,000xg for 5min.
2. Carefully open the tube and add 100ul of sterile water to dissolve the DNA.
3. Close the tube and incubate for 10 minutes at room temperature.
4. Briefly vortex the tube and then do a quick spin (less than 5000xg) to concentrate the liquid at the bottom.
5. Store the suspended plasmid at -20°C. The DNA is stable for at least one year from date of shipping when stored at -20°C.

RefSeq: [NM_001145317.2](#)

RefSeq ORF: 750 bp

Locus ID: 79980

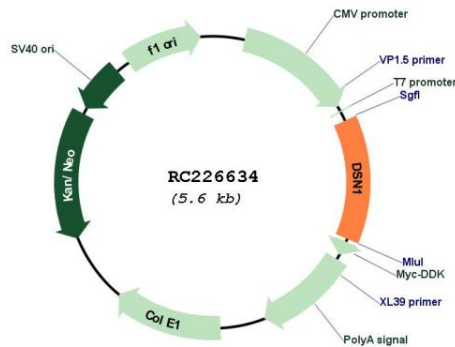
UniProt ID: [Q9H410](#)

Cytogenetics: 20q11.23

MW: 27.8 kDa

Gene Summary: This gene encodes a kinetochore protein that functions as part of the minichromosome instability-12 centromere complex. The encoded protein is required for proper kinetochore assembly and progression through the cell cycle. Alternative splicing results in multiple transcript variants. [provided by RefSeq, Feb 2009]

Product images:



Circular map for RC226634