

## Product datasheet for **RC226614**

### DSN1 (NM\_001145316) Human Tagged ORF Clone

#### Product data:

Product Type:	Expression Plasmids
Product Name:	DSN1 (NM_001145316) Human Tagged ORF Clone
Tag:	Myc-DDK
Symbol:	DSN1
Synonyms:	C20orf172; dj469A13.2; hKNL-3; KNL3; MIS13
Mammalian Cell Selection:	Neomycin
Vector:	pCMV6-Entry (PS100001)
E. coli Selection:	Kanamycin (25 ug/mL)
ORF Nucleotide Sequence:	>RC226614 representing NM_001145316 Red=Cloning site Blue=ORF Green=Tags(s)

TTTTGTAATACGACTCACTATAGGGCGGCCGGAATTCGTCGACTGGATCCGGTACCGAGGAGATCTGCC  
GCC**CGATCGCC**

ATGACTTCAGTGACTAGATCAGAGATCATAGATGAAAAAGGACCAGTGATGTCTAAGACTCATGATCATC  
AATTGGAATCAAGTCTCAGTCTGTGGAAGTGTTGCTAAAACATCTGCCTCCCTGGAGATGAATCAAGG  
CGTTTCAGAGGAAAGAATTCACCTTGGCTCTAGCCCTAAAAAGGGGAAATTGTGATCTCAGCCACCAG  
GAAAGACTTCAGTCGAAGTCCCTTCATTTGTCTCCTCAAGAACAATCTGCCAGTTATCAAGACAGGAGGC  
AATCCTGGCGGCGAGCAAGTATGAAAGAAACGAACCGGCGGAAGTCGCTGCATCCCATCCAGGGCAT  
CACAGAGCTCAGCCGGTCTATCAGTGTCGATTTAGCAGAAAGCAAACGGCTTGGCTGTCTCTGCTTTCC  
AGTTTCCAGTTCTCTATTCAGAACTTGAACCTTCTAAGGGACACTAAGGGCTTCAGTCTTGAAGTT  
TTAGAGCCAAAGCATCTTCTCTTCTGAAGAATTGAAACATTTTGCAGACGGACTGGAACTGATGGAAC  
TCTACAAAAATGTTTTGAAGATTCAAATGGAAAAGCATCAGATTTTTCTTGGAAAGCATCTGTGGCTGAG  
ATGAAGGAATACATAACAAAGTTTTCTTTAGAACGTCAGACTTGGGATCAGCTCTTGCTTACTACCAGC  
AGGAGGCTAAAGAGATATTGTCCAGAGGATCAACTGAGGCCAAAATTACTGAGGTCAAAGTGAACCTAT  
GACATATCTTGGGTCTTCTCAGAATGAAGTTCTTAATACAAAACCTGACTACCAGAAAATATTACAGAAC  
CAGAGCAAAGTCTTTGACTGTATGGAGTTGGTGATGGATGAAGGATCAGTGAACAGCTGCAGG  
CCTTTATGGATGAAAGTACCCAGTGTCTCCAGAAGGTGTGATACAGCTCGGAAAAGAGAAGCATGCAACA  
ATTAGATCCCTCACCAGCTCGAAAACCTGTTGAAGCTTCAGCTACAGAACCACCTGCCATACATGGATCT  
GGATCTGGATCTTGTCAG

**ACGCGT**ACGCGGCCGCTCGAGCAGAACTCATCTCAGAAGAGGATCTGGCAGCAAATGATATCCTGGATT  
ACAAGGATGACGACGATAAGGTTTAA



[View online »](#)

**Protein Sequence:** >RC226614 representing NM\_001145316  
Red=Cloning site Green=Tags(s)

MTSVTRSEIIDEKGPVMSKTHDHLQLESSLSPVEVFAKTSASLEMNQGVSEERIHGSSPKKGGNCDLSHQ  
 ERLQSKSLHLSPQEQSASYQDRRQSWRRASMKETNRRKSLHPIHQGITELSRISVDLAESKRLGCLLLS  
 SFQFSIQKLEPFLRDTKGFSLSEFRKASSLSEELKHFADGLETDLQKCFEDSNGKASDFLEASVAE  
 MKEYITKFSLERQTDWQLLLLHYQQEAKEILSRGSTEAKITEVKVEPMTYLGSSQNEVLNTPDYQKILQN  
 QSKVFDCELMVDELQGSVKQLQAFMDESTQCFQKVSVQLGKRSMQQLDPSARKLLKLQLQNPPAIHGS  
 GSGSCQ

TRTRPLEQKLISEEDLAANDILDYKDDDDKV

**Chromatograms:** [https://cdn.origene.com/chromatograms/mg4448\\_a09.zip](https://cdn.origene.com/chromatograms/mg4448_a09.zip)

**Restriction Sites:** SgfI-MluI

**Cloning Scheme:**



**ACCN:** NM\_001145316

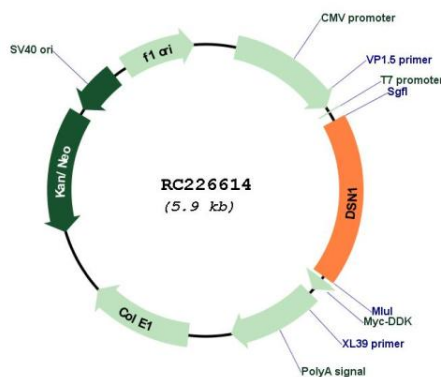
**ORF Size:** 1068 bp

**OTI Disclaimer:** Due to the inherent nature of this plasmid, standard methods to replicate additional amounts of DNA in E. coli are highly likely to result in mutations and/or rearrangements. Therefore, OriGene does not guarantee the capability to replicate this plasmid DNA. Additional amounts of DNA can be purchased from OriGene with batch-specific, full-sequence verification at a reduced cost. Please contact our customer care team at [custsupport@origene.com](mailto:custsupport@origene.com) or by calling 301.340.3188 option 3 for pricing and delivery.

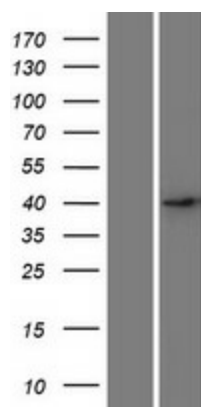
The molecular sequence of this clone aligns with the gene accession number as a point of reference only. However, individual transcript sequences of the same gene can differ through naturally occurring variations (e.g. polymorphisms), each with its own valid existence. This clone is substantially in agreement with the reference, but a complete review of all prevailing variants is recommended prior to use. [More info](#)

- OTI Annotation:** This clone was engineered to express the complete ORF with an expression tag. Expression varies depending on the nature of the gene.
- Components:** The ORF clone is ion-exchange column purified and shipped in a 2D barcoded Matrix tube containing 10ug of transfection-ready, dried plasmid DNA (reconstitute with 100 ul of water).
- Reconstitution Method:**
1. Centrifuge at 5,000xg for 5min.
  2. Carefully open the tube and add 100ul of sterile water to dissolve the DNA.
  3. Close the tube and incubate for 10 minutes at room temperature.
  4. Briefly vortex the tube and then do a quick spin (less than 5000xg) to concentrate the liquid at the bottom.
  5. Store the suspended plasmid at -20°C. The DNA is stable for at least one year from date of shipping when stored at -20°C.
- RefSeq:** [NM\\_001145316.1](#), [NP\\_001138788.1](#)
- RefSeq ORF:** 1071 bp
- Locus ID:** 79980
- UniProt ID:** [Q9H410](#)
- Cytogenetics:** 20q11.23
- MW:** 39.9 kDa
- Gene Summary:** This gene encodes a kinetochore protein that functions as part of the minichromosome instability-12 centromere complex. The encoded protein is required for proper kinetochore assembly and progression through the cell cycle. Alternative splicing results in multiple transcript variants. [provided by RefSeq, Feb 2009]

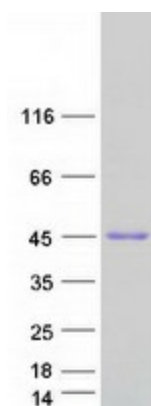
### Product images:



Circular map for RC226614



Western blot validation of overexpression lysate (Cat# [LY428819]) using anti-DDK antibody (Cat# [TA50011-100]). Left: Cell lysates from untransfected HEK293T cells; Right: Cell lysates from HEK293T cells transfected with RC226614 using transfection reagent MegaTran 2.0 (Cat# [TT210002]).



Coomassie blue staining of purified DSN1 protein (Cat# [TP326614]). The protein was produced from HEK293T cells transfected with DSN1 cDNA clone (Cat# RC226614) using MegaTran 2.0 (Cat# [TT210002]).