

Product datasheet for RC226609

NR2F2 (NM_001145155) Human Tagged ORF Clone

Product data:

Product Type:	Expression Plasmids
Product Name:	NR2F2 (NM_001145155) Human Tagged ORF Clone
Tag:	Myc-DDK
Symbol:	NR2F2
Synonyms:	ARP-1; ARP1; CHTD4; COUPTF2; COUPTFB; COUPTFII; NF-E3; SRXX5; SVP40; TFCOUP2
Mammalian Cell Selection:	Neomycin
Vector:	pCMV6-Entry (PS100001)
E. coli Selection:	Kanamycin (25 ug/mL)
ORF Nucleotide Sequence:	>RC226609 representing NM_001145155 Red=Cloning site Blue=ORF Green=Tags(s)

TTTTGTAATACGACTCACTATAGGGCGCCGGGAATTCGTCGACTGGATCCGGTACCGAGGAGATCTGCC
GCC**CGATCGCC**

ATGCAAGCGGTTTGGGACCTTGAACAAGGCAAATATGGTTTTGCGGTGCAGAGGGGCAGGATGCCGCCGACCCAGCCGACCCACGGGCAGTTCGCGCTGACCAACGGGGATCCCCTCACTGCCACTCGTACCTGTCCGGATATATTTCCCTGCTGTTGCGCGCGGAGCCCTATCCCACGTCGCGCTTCGGCAGCCAATGCATGCAGCCAAACAACATCATGGGTATCGAGAACATTTGCGAACTGGCCGCGAGGATGCTCTTCAGCGCCGTCGAGTGGCCCGGAACATCCCCTTCTCCCGACCTGCAGATCACGGACCAGGTGGCCCTGCTTCGCCTCACCTGGAGCGAGCTGTTTGTGTTGAATGCGGCGCAGTCTCCATGCCCTCCACGTCGCCCCGCTCCTGGCCCGCCGGCCTGCATGCTTCGCCATGTCCGCCGACCGGTGGTGCCTTTATGGACCACATACGGATCTTCCAAGAGCAAGTGGAGAAGCTCAAGGCGCTGCACGTTGACTCAGCCGAGTACAGCTGCCTCAAGGCCATAGTCTGTTCACCTCAGATGCCTGTGGTCTCTCTGATGTAGCCCATGTGGAAAGCTTGCAAGAAAGTCTCAGTGTGCTTTGGAAGAATACGTTAGGAGCCAGTACCCCAACCAGCCGACGAGATTCGAAAGCTTTTGCTTCGCC

TCCCTCCCTCCGACCGTCTCCTCCTCAGTCATAGAGCAATTGTTTTTCGTCCGTTTGGTAGGTAACCCCATCGAAACCCTCATCCGGGATATGTTACTGTCCGGCAGCAGTTTTAACTGGCCGTATATGGCAATCAA

ACGCGTACGCGGCCGCTCGAGCAGAAACTCATCTCAGAAGAGGATCTGGCAGCAAATGATATCCTGGATT
ACAAGGATGACGACGATAAGGTTTAA



[View online »](#)

Protein Sequence: >RC226609 representing NM_001145155
Red=Cloning site Green=Tags(s)

MQAVWDLEQGYGFAVQRGRMPPTQPTHGQFALTNGDPLNCHSYLSGYISLLRAEYPYPTSRFGSQCMQP
 NNIMGIENICELAARMLFSAVEWARNIPFFDLQITDQVALLRLTWSLFLVNAQAQCSMPLHVAPLAAA
 GLHASPMSADRVVAFMDHIRIFQEQVEKALKLHVDSAEYSCLKAIVLFTSDACGLSDVAHVESLQEKSSQC
 ALLEEYVRSQYPNQPTRFGKLLRLPSLRTVSSSVIEQLFFVRLVGKTPLETIRDMLLSGSSFNWPYMAI
 Q

TRTRPLEQKLISEEDLAANDILDYKDDDDKV

Chromatograms: https://cdn.origene.com/chromatograms/mk8031_b11.zip

Restriction Sites: SgfI-MluI

Cloning Scheme:



ACCN: NM_001145155

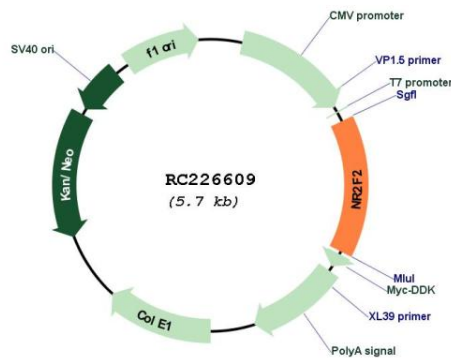
ORF Size: 843 bp

OTI Disclaimer: Due to the inherent nature of this plasmid, standard methods to replicate additional amounts of DNA in E. coli are highly likely to result in mutations and/or rearrangements. Therefore, OriGene does not guarantee the capability to replicate this plasmid DNA. Additional amounts of DNA can be purchased from OriGene with batch-specific, full-sequence verification at a reduced cost. Please contact our customer care team at custsupport@origene.com or by calling 301.340.3188 option 3 for pricing and delivery.

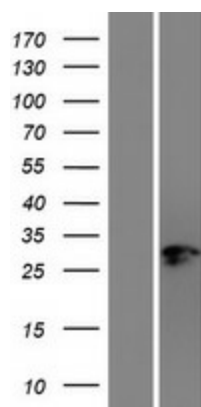
The molecular sequence of this clone aligns with the gene accession number as a point of reference only. However, individual transcript sequences of the same gene can differ through naturally occurring variations (e.g. polymorphisms), each with its own valid existence. This clone is substantially in agreement with the reference, but a complete review of all prevailing variants is recommended prior to use. [More info](#)

OTI Annotation:	This clone was engineered to express the complete ORF with an expression tag. Expression varies depending on the nature of the gene.
Components:	The ORF clone is ion-exchange column purified and shipped in a 2D barcoded Matrix tube containing 10ug of transfection-ready, dried plasmid DNA (reconstitute with 100 ul of water).
Reconstitution Method:	<ol style="list-style-type: none"> 1. Centrifuge at 5,000xg for 5min. 2. Carefully open the tube and add 100ul of sterile water to dissolve the DNA. 3. Close the tube and incubate for 10 minutes at room temperature. 4. Briefly vortex the tube and then do a quick spin (less than 5000xg) to concentrate the liquid at the bottom. 5. Store the suspended plasmid at -20°C. The DNA is stable for at least one year from date of shipping when stored at -20°C.
RefSeq:	NM_001145155.2
RefSeq ORF:	846 bp
Locus ID:	7026
UniProt ID:	P24468
Cytogenetics:	15q26.2
Protein Families:	Druggable Genome, Nuclear Hormone Receptor, Transcription Factors
MW:	31.3 kDa
Gene Summary:	This gene encodes a member of the steroid thyroid hormone superfamily of nuclear receptors. The encoded protein is a ligand inducible transcription factor that is involved in the regulation of many different genes. Alternate splicing results in multiple transcript variants. [provided by RefSeq, Mar 2010]

Product images:



Circular map for RC226609



Western blot validation of overexpression lysate (Cat# [LY428730]) using anti-DDK antibody (Cat# [TA50011-100]). Left: Cell lysates from untransfected HEK293T cells; Right: Cell lysates from HEK293T cells transfected with RC226609 using transfection reagent MegaTran 2.0 (Cat# [TT210002]).