

Product datasheet for **RC226597**

GRAF (ARHGAP26) (NM_001135608) Human Tagged ORF Clone

Product data:

Product Type:	Expression Plasmids
Product Name:	GRAF (ARHGAP26) (NM_001135608) Human Tagged ORF Clone
Tag:	Myc-DDK
Symbol:	GRAF
Synonyms:	GRAF; GRAF1; OPHN1L; OPHN1L1
Mammalian Cell Selection:	Neomycin
Vector:	pCMV6-Entry (PS100001)
E. coli Selection:	Kanamycin (25 ug/mL)



[View online »](#)

**ORF Nucleotide
Sequence:**

>RC226597 representing NM_001135608
 Red=Cloning site Blue=ORF Green=Tags(s)

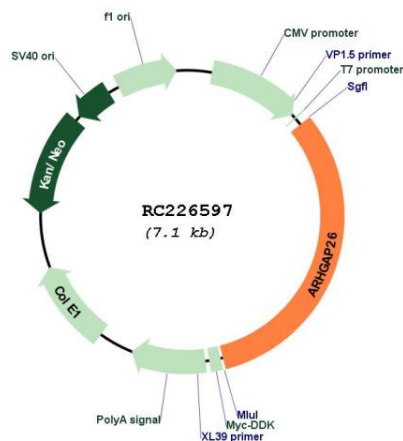
TTTTGTAATACGACTCACTATAGGGCGGCCGGAATTCGTCGACTGGATCCGGTACCGAGGAGATCTGCC
 GCC**CGGATCGCC**

ATGGGGCTCCAGCGCTCGAGTTCAGCGACTGCTGCCTCGATAGTCCGCACTTCCGAGAGACGCTCAAGT
 CGCACGAAGCAGAGCTGGACAAGACCAACAAATTCATCAAGGAGCTCATCAAGGACGGGAAGTCACTCAT
 AAGCGCGCTCAAGAATTTGTCTTCAGCGAAGCGGAAGTTTGCAGATTCCTTAAATGAATTTAAATTCAG
 TGCATAGGAGATGCAGAAACAGATGATGAGATGTGTATAGCAAGGTCTTTCAGGAGTTTCCACTGTCC
 TCAGGAATCTTGAAGATGAACGGATACGGATGATTGAGAATGCCAGCGAGGTGCTCATCACTCCCTTGG
 GAAGTTTCGAAAGGAACAGATCGGGCTGCCAAGGAAGCCAAAAGAAGTATGACAAAGAGACAGAAAAG
 TATTGTGGCATCTTAGAAAAACTTGAATTTGTCTTCCAAAAAGAAAGTCTCAGCTTCAGGAGGCAG
 ACAGCCAAGTGGACCTGGTCCGGCAGCATTCTATGAAGTATCCCTGGAATATGTCTTCAAGGTGCAGGA
 AGTCCAAGAGAGAAAGATGTTTGAAGTTTGTGGAGCCTCTGCTGGCCTTCTGCAAGGACTCTTCACTTTC
 TATCACCATGGTTACGAAGTGGCAAGGATTCGGGGACTTCAAGACACAGTTAACCATAGCATACAGA
 ACACAAGAAATCGCTTTGAAGGCACTAGATCAGAAGTGAATCACTGATGAAAAAGATGAAGGAGATCC
 CCTTGAGCACAAGACCATCAGTCCCTACACCATGGAGGGATACCTCTACGTGCAGGAGAAACGCTCACTTT
 GGAAGTCTTGGGTGAAGCACTACTGTACATATCAACGGGATTCAAAACAAATCACCATGGTACCATTTG
 ACCAAAAGTCAGGAGGAAAAGGGGGAGAAGATGAATCAGTTATCCTCAAATCCTGCACACGGCGGAAAAC
 AGACTCCATTGAGAAGAGGTTTTGCTTTGATGTGGAAGCAGTAGACAGGCCAGGGGTTATCACCATGCAA
 GCTTTGTGCGAAGAGGACCGGAGGCTCTGGATGGAAGCCATGGATGGCCGGGAACCTGTCTACAACCTCGA
 ACAAGACAGCCAGAGTGAAGGACTGCGCAGTTGGACAGCATTGGCTTCAAGTAAATCAGGAAATGCAT
 CCATGCTGTGAAACAGAGGGATCAACGAGCAAGGGCTGTATCGAATTGTGGGGTCAACTCCAGAGTG
 CAGAAGTTGCTGAGTGTCTGATGGACCCAAAGACTGCTTCTGAGACAGAAAACAGATATCTGTGCTGAAT
 GGGAGATAAAGACCATCACTAGTGTCTGAAGACCTACCTAAGAATGCTTCCAGGACCACTCATGATGTA
 CCAGTTTCAAAGAAGTTTCATCAAAGCAGCAAACTGGAGAACCAGGAGTCTCGGGTCTCTGAAATCCAC
 AGCCTTGTTCATCGGCTCCAGAGAAAATCGGCAGATGTTACAGCTGCTCATGAACCACTTGGCAAATG
 TTGCTAACCAACCAAGCAGAAATTTGATGACGGTGGCAAACCTTGGTGTGGTGTGGACCCACTCTGCT
 GAGGCCTCAGGAAGAAACAGTAGCAGCCATCATGGACATCAAATTCAGAACATTGTCTTGGATCCTA
 ATAGAAAACCACGAAAAGATATTTAACACCGTGCCCGATATGCCTCTACCAATGCCAGCTGCACCTGT
 CTCGGAAGAAGAGCAGTACTCCAAGCCCCGTCTGCAGCGAGAGGCCCTGACGCTCTCCACACCGT
 TCAGTCAACAGAGAAAACAGGAACAAAGGAACAGCATCATCAACTCCAGTTTGAATCTGTCTCATAAAT
 CCAAACAGCATCCTTAATTCAGCAGCAGCTTACAGCCAAATGAAGTCCAGTACCCAGACCTGGCTG
 TGGTCAAACCCACCCGGCCAACTCACTCCCCCGAATCCAAGCCAACTTCAACCCCTCTCGCCATCTTG
 GCCCATGTTCTCGGCGCCATCCAGCCCTATGCCACCTCATCCACGTCCAGCGACTCATCCCCCGTCAGC
 ACACCGTTCGGAAGGCAAAAGCCTTGTATGCCTGCAAAGCTGAACATGACTCAGAACTTTCGTTTACAG
 CAGGCACGGTCTTCGATAATGTTACCCATCTCAGGAGCCTGGCTGGTTGGAGGGGACTCGAACGGAAA
 GACTGGCCTCATCCCTGAGAATTACGTGGAGTTCTC

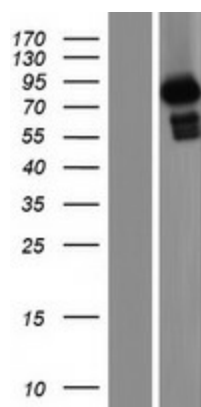
ACGCGTACGCGGCCGCTCGAGCAGAAACTCATCTCAGAAGAGGATCTGGCAGCAAATGATATCCTGGATT
 ACAAGGATGACGACGATAAGGTTTAA

Components:	The ORF clone is ion-exchange column purified and shipped in a 2D barcoded Matrix tube containing 10ug of transfection-ready, dried plasmid DNA (reconstitute with 100 ul of water).
Reconstitution Method:	<ol style="list-style-type: none"> 1. Centrifuge at 5,000xg for 5min. 2. Carefully open the tube and add 100ul of sterile water to dissolve the DNA. 3. Close the tube and incubate for 10 minutes at room temperature. 4. Briefly vortex the tube and then do a quick spin (less than 5000xg) to concentrate the liquid at the bottom. 5. Store the suspended plasmid at -20°C. The DNA is stable for at least one year from date of shipping when stored at -20°C.
RefSeq:	<u>NM_001135608.3</u>
RefSeq ORF:	2280 bp
Locus ID:	23092
UniProt ID:	<u>Q9UNA1</u>
Cytogenetics:	5q31.3
Protein Families:	Druggable Genome
MW:	86 kDa
Gene Summary:	Interaction of a cell with the extracellular matrix triggers integrin cell surface receptors to begin signaling cascades that regulate the organization of the actin-cytoskeleton. One of the proteins involved in these cascades is focal adhesion kinase. The protein encoded by this gene is a GTPase activating protein that binds to focal adhesion kinase and mediates the activity of the GTP binding proteins RhoA and Cdc42. Defects in this gene are a cause of juvenile myelomonocytic leukemia (JMML). Multiple transcript variants encoding different isoforms have been found for this gene. [provided by RefSeq, Mar 2017]

Product images:



Circular map for RC226597



Western blot validation of overexpression lysate (Cat# [LY427634]) using anti-DDK antibody (Cat# [TA50011-100]). Left: Cell lysates from untransfected HEK293T cells; Right: Cell lysates from HEK293T cells transfected with RC226597 using transfection reagent MegaTran 2.0 (Cat# [TT210002]).