

## Product datasheet for **RC226588**

### LI Cadherin (CDH17) (NM\_001144663) Human Tagged ORF Clone

#### Product data:

Product Type:	Expression Plasmids
Product Name:	LI Cadherin (CDH17) (NM_001144663) Human Tagged ORF Clone
Tag:	Myc-DDK
Symbol:	LI Cadherin
Synonyms:	CDH16; HPT-1; HPT1
Mammalian Cell Selection:	Neomycin
Vector:	pCMV6-Entry (PS100001)
E. coli Selection:	Kanamycin (25 ug/mL)



[View online »](#)

**ORF Nucleotide  
Sequence:**

>RC226588 representing NM\_001144663  
 Red=Cloning site Blue=ORF Green=Tags(s)

TTTTGTAATACGACTCACTATAGGGCGGCCGGAATTCGTGCGACTGGATCCGGTACCGAGGAGATCTGCC  
 GCC**CGCATCGCC**

ATGATACTTCAGGCCATCTTCACTCCCTGTGTCTTCTTATGCTTTATTTGGCAACTGGATATGGCCAAG  
 AGGGGAAGTTTAGTGACCCCTGAAACCCATGACATTTTCTATTTATGAAGGCCAAGAACCGAGTCAAAT  
 TATATTCAGTTAAAGCCAATCCTCCTGCTGTGACTTTTGAACAACTGGGAGACAGACAACATATTT  
 GTGATAGAACGGGAGGGACTTCTGTATTACAACAGAGCCTTGGACAGGGAAAAGAGTCTACTCACAATC  
 TCCAGGTTGCAGCCCTGGACGCTAATGGAATTATAGTGGAGGGTCCAGTCCCTATCACCATAGAAGTGAA  
 GGACATCAACGACAATCGACCCACGTTTCTCCAGTCAAAGTACGAAGGCTCAGTAAGGCAGAACTCTCGC  
 CCAGGAAAGCCCTTCTGTATGTCAATGCCACAGACCTGGATGATCCGGCCACTCCCAATGGCCAGCTTT  
 ATTACCAGATTGCATCCAGCTCCCATGATCAACAATGTTATGTACTTTCAGATCAACAACAAAACGGG  
 AGCCATCTCTTACCCGAGAGGGATCTCAGGAATTGAATCCTGCTAAGAATCCTTCTATAATCTGGTG  
 ATCTCAGTGAAGGACATGGGAGGCCAGAGTGAGAATTCCTTCAGTGATACCACATCTGTGGATATCATAG  
 TGACAGAGAATATTTGGAAGCACAAAACCTGTGGAGATGGTGGAAAACCTCAACTGATCCTCACCCCAT  
 CAAAATCACTCAGGTGCGGTGGAATGATCCCGTGCACAAATTCCTTAGTTGACAAAAGAGAAGTGCCA  
 AGATTCACATTTTCAATTGACCAGGAAGGAGATATTTACGTGACTCAGCCCTTGGACCGAGAAGAAAAGG  
 ATGCATATGTTTTTATGCAGTTGCAAAGGATGAGTACGAAAACCACTTTCATATCCCGTGAAATTC  
 TGTAAAAGTTAAAGATATTAATGATAATCCACCTACATGTCGTCACCAGTAACCGTATTTGAGGTCCAG  
 GAGAATGAACGACTGGGTAAACAGTATCGGGACCCTTACTGCACATGACAGGGATGAAGAAAATCTGCCA  
 ACAGTTTTCTAAACTACAGGATTGTGGAGCAAACCTCCAAAACCTCCCATGGATGGACTCTTCTAATCCA  
 AACCTATGCTGGAATGTTACAGTTAGCTAACAGTCCCTGGAAGAAGCAAGATACTCCTCAGTACAACCTTA  
 ACGATAGAGGTGTCTGACAAAGATTTCAAGACCCCTTGTGTTTGTGCAAATCAACGTTATTGATATCAATG  
 ATCAGATCCCATCTTTGAAAAATCAGATTATGGAAACCTGACTCTTGCTGAAGACACAAACATTGGGTC  
 CACCATCTTAACCATCCAGGCCACTGATGCTGATGAGCCATTTACTGGGAGTTCTAAAATCTGTATCAT  
 ATCATAAAGGGAGACAGTGAAGGACGCCTGGGGTTGACACAGATCCCCATACCAACACCGGATATGTCA  
 TAATTAAGGCCTCTTGATTTTGAACAGCAGCTGTTTCCAACATTGTGTTCAAAGCAGAAAATCTGGA  
 GCCTCTAGTGTTGGTGTGAAGTACAATGCAAGTCTTTTCCAAAGTTCACGCTTATTGTGACAGATGTG  
 AATGAAGCACCTCAATTTCCCAACACGTATTCGAAGCGAAAGTCAGTGAGGATGTAGCTATAGGCACTA  
 AAGTGGCAATGTGACTGCCAAGGATCCAGAAGGTCTGGACATAAGTTATTCAGTGAAGGGAGACACAAG  
 AGGTTGGCTTAAAATTGACCACGTGACTGGTGAGATCTTTAGTGTGGCTCCATTGGACAGAGAAGCCGGA  
 AGTCCATATCGGGTACAAGTGGTGGCCACAGAAGTAGGGGGTCTTCTTGAGCTCTGTGTCAGAGTTCC  
 ACCTGATCCTTATGGATGTGAATGACAACCTCCAGGCTAGCCAAGGACTACACGGGCTTGTCTTCTG  
 CCATCCCTCAGTGCACCTGGAAGTCTCATTTTGGAGCTACTGATGATGATCAGCACTTATTTCCGGGT  
 CCCATTTTACATTTTCCCTCGGCAGTGAAGCTTACAAAACGACTGGGAAGTTTCCAAAATCAATGGTA  
 CTCATGCCCGACTGTCTACCAGGCACACAGACTTTGAGGAGAGGGAGTATGTCGCTTGTATCCGCATCAA  
 TGATGGGGTTCGGCCACCCTTGAAGGCATTGTTCTTTACCAGTTACATTCTGCAGTTGTGTGGAAGGA  
 AGTTGTTTCCGGCCAGCAGGTACCAGACTGGGATACCCACTGTGGCATGGCAGTTGGTATACTGCTGA  
 CCACCTTCTGGTGATTGGTATAATTTTAGCAGTTGTGTTTATCCGCATAAAGAAGGATAAAGGCAAAGA  
 TAATGTTGAAAGTCTCAAGCATCTGAAGTCAAACCTCTGAGAAGC

**ACGCGT**ACGCGGCCGCTCGAGCAGAACTCATCTCAGAAGAGGATCTGGCAGCAAATGATATCCTGGATT  
 ACAAGGATGACGACGATAAGGTTTAA

**Protein Sequence:** >RC226588 representing NM\_001144663  
Red=Cloning site Green=Tags(s)

MILQAHLHSLCLLMLYLATGYGQEGKFSGLPKPMTFSIYEGQEPSQIIFQFKANPPAVTFELTGETDNIF  
VIEREGLLYNRALDRETRSTHNLQVAALDANGIIVEGPVITIEVKDINDNRPTFLQSKYEGSVRQNSR  
PGKPFLYVNATDLDDPATPNGQLYYQIIVIQLPMINNVMYFQINNKTGAI SLTREGSQELNPAKNPSYNLV  
ISVKDMGGQSENSFSDTTSVDIIVTENIWKAPKPVEMVENSTDPHPKIKITQVRWNDPGAQYSLVDKEKLP  
RFPFSIDQEGDIYVTQPLDREEKDAYVFYAVAKDEYKPLSYPLEIHVKVKDINDNPPTCPSPVTVFEVQ  
ENERLGNSIGTLTAHDRDEENTANSFLNYRIVEQTPKLPMDGLFLIQTYAGMLQLAKQSLKKQDTPQYNL  
TIEVSDKDFKTLCFVQINVIDINDQIPIFEKSDYGNLTLAEDTNI GSTILTIQATDADEPFTGSSKILYH  
I IKGDSEGR LGVDTDPHTNTGYVI IKKPLDFETA AVSNI VFKAENPEPLVFGVKYNASSFAKFTLIVTDV  
NEAPQFSQHVFQAKVSEDVAIGTKVGNVTAKDPEGLDISYSLRGDTRGWLKIDHVTGEIFSVAPLDREAG  
SPYRVQV VATEVGGSSLSVSEFHLILMDVNDNPPRLAKDY TGLFFCHPLSAPGSLIFEATDDDQHLFRG  
PHFTFSLGSGSLQNDWEVSKINGTHARLSTRHTDFEEREYVVLIRINDGGRPPLEGIVSLPVTFCSCVEG  
SCFRPAGHQGTGIPTVGMVAVGILLTLLVIGIILAVVFI RIKKDKGKDNVESAQASEVKPLRS

TRTRPLEQKLISEEDLAANDILDYKDDDDKV

**Chromatograms:** [https://cdn.origene.com/chromatograms/mg2975\\_e01.zip](https://cdn.origene.com/chromatograms/mg2975_e01.zip)

**Restriction Sites:** Sgfl-Mlul

**Cloning Scheme:**


**ACCN:** NM\_001144663

**ORF Size:** 2496 bp

**OTI Disclaimer:** The molecular sequence of this clone aligns with the gene accession number as a point of reference only. However, individual transcript sequences of the same gene can differ through naturally occurring variations (e.g. polymorphisms), each with its own valid existence. This clone is substantially in agreement with the reference, but a complete review of all prevailing variants is recommended prior to use. [More info](#)

**OTI Annotation:** This clone was engineered to express the complete ORF with an expression tag. Expression varies depending on the nature of the gene.

**Components:** The ORF clone is ion-exchange column purified and shipped in a 2D barcoded Matrix tube containing 10ug of transfection-ready, dried plasmid DNA (reconstitute with 100 ul of water).

**Reconstitution Method:**

1. Centrifuge at 5,000xg for 5min.
2. Carefully open the tube and add 100ul of sterile water to dissolve the DNA.
3. Close the tube and incubate for 10 minutes at room temperature.
4. Briefly vortex the tube and then do a quick spin (less than 5000xg) to concentrate the liquid at the bottom.
5. Store the suspended plasmid at -20°C. The DNA is stable for at least one year from date of shipping when stored at -20°C.

**RefSeq:** [NM\\_001144663.1](#), [NP\\_001138135.1](#)

**RefSeq ORF:** 2499 bp

**Locus ID:** 1015

**UniProt ID:** [Q12864](#)

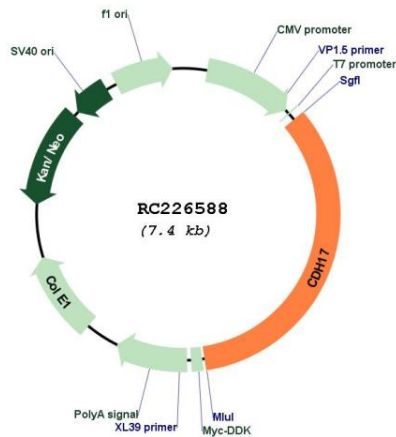
**Cytogenetics:** 8q22.1

**Protein Families:** Transmembrane

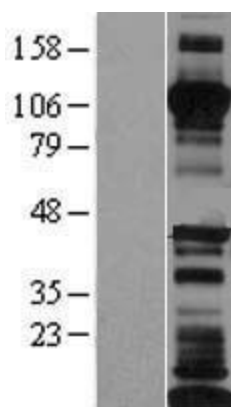
**MW:** 92.21 kDa

**Gene Summary:** This gene is a member of the cadherin superfamily, genes encoding calcium-dependent, membrane-associated glycoproteins. The encoded protein is cadherin-like, consisting of an extracellular region, containing 7 cadherin domains, and a transmembrane region but lacking the conserved cytoplasmic domain. The protein is a component of the gastrointestinal tract and pancreatic ducts, acting as an intestinal proton-dependent peptide transporter in the first step in oral absorption of many medically important peptide-based drugs. The protein may also play a role in the morphological organization of liver and intestine. Alternative splicing results in multiple transcript variants. [provided by RefSeq, Jan 2009]

### Product images:



Circular map for RC226588



Western blot validation of overexpression lysate (Cat# [LY428499]) using anti-DDK antibody (Cat# [TA50011-100]). Left: Cell lysates from untransfected HEK293T cells; Right: Cell lysates from HEK293T cells transfected with RC226588 using transfection reagent MegaTran 2.0 (Cat# [TT210002]).