

Product datasheet for **RC226579**

NONO (NM_001145409) Human Tagged ORF Clone

Product data:

Product Type:	Expression Plasmids
Product Name:	NONO (NM_001145409) Human Tagged ORF Clone
Tag:	Myc-DDK
Symbol:	NONO
Synonyms:	MRXS34; NMT55; NRB54; P54; P54NRB; PPP1R114
Mammalian Cell Selection:	Neomycin
Vector:	pCMV6-Entry (PS100001)
E. coli Selection:	Kanamycin (25 ug/mL)



[View online »](#)

ORF Nucleotide Sequence:

>RC226579 ORF sequence
 Red=Cloning site Blue=ORF Green=Tags(s)

TTTTGTAATACGACTCACTATAGGGCGGCCGGAATTCGTCGACTGGATCCGGTACCGAGGAGATCTGCC
 GCC**GCGATCGCC**

ATGCAGAGTAATAAACTTTTAACTTGGAGAAGCAAAACCATACTCCAAGAAAGCATCATCAACATCACC
 ACCAGCAGCAGCACCACCAGCAGCAACAGCAGCAGCCACCACCGCCAATACCTGCAAAATGGGCAACA
 GGCCAGCAGCAAAATGAAGGCTTGACTATTGACCTGAAGAATTTAGAAAACCAGGAGAGAAGACCTTC
 ACCCAACGAAGCCGTCCTTTTGTGGAAATCTTCTCCCGACATCACTGAGGAAGAAATGAGGAACTAT
 TTGAGAAAATGGAAGGCAGGCGAAGTCTTATTATAAGGATAAAGGATTTGGCTTTATCCGCTTGA
 AACCCGAACCCTAGCGGAGATTGCCAAAGTGGAGCTGGACAATATGCCACTCCGTGGAAAGCAGTGCCT
 GTGCGCTTTCCTGCCATAGTGCATCCCTACAGTTCGAAACCTCCTCAGTATGTGTCCAACGAACTGC
 TGAAGAAGCCTTTCTGTGTTGGCCAGGTAGAGAGGGCTGTAGTCATTGTGGATGATCGAGGAAGGCC
 CTCAGGAAAAGCATTGTTGAGTCTCAGGGAAGCCAGCTGCTCGAAAGCTCTGGACAGATGCAGTGAA
 GGCTCCTTCTGTGTAACCACATTTCTCTGCTGTGACTGTGGAGCCATGGACCAGTTAGATGATGAAG
 AGGGACTTCCAGAGAAGCTGGTTATAAAAAACCAGCAATTTACAAGGAACGAGAGCAGCCACCCAGATT
 TGCACAGCCTGGCTCCTTTGAGTATGAATATGCCATGCGCTGGAAGGCACTCATTGAGATGGAGAAGCAG
 CAGCAGGACCAAGTGGACCGCAACATCAAGGAGGCTCGTGAAGCTGGAGATGGAGATGGAAAGTGCAC
 GCCATGAGCACCAGGTATGCTAATGAGACAGGATTTGATGAGGCGCAAGAAGAACTTCGGAGGATGGA
 AGAGCTGCACAACCAAGAGGTGCAAAAACGAAAGCAACTGGAGCTCAGGCAGGAGGAAGAGCGCAGGCGC
 CGTGAAGAAGAGATGCGGCGCAGCAAGAAGAAATGATGCGGCGACAGCAGGAAGGATTCAGGGAACCT
 TCCCTGATGCGAGAGAGCAGGAGATTCCGATGGGTGAGTGCATGGCTATGGGAGGTGCTATGGCATAACAA
 CAGAGGTGCCATGCCCCCTGCTCCTGTGCCAGCTGGTACCCAGCTCCTCCAGGACCTGCCACTATGATG
 CCGGATGGAACCTTTGGGATTGACCCACCAACAACTGAACGCTTTGGTCAAGGCTGCTACAATGGAAGGAA
 TTGGGGCAATTGGTGAACCTCCTCTGCATTCAACCGTGCAGCTCCTGGAGCTGAATTTGCCCAACAA
 ACGTCGCCGATAC

ACGCGTACGCGGCCGCTCGAGCAGAACTCATCTCAGAAGAGGATCTGGCAGCAATGATATCCTGGATT
 ACAAGGATGACGACGATAAGGTTTAA

Protein Sequence:

>RC226579 protein sequence
 Red=Cloning site Green=Tags(s)

MQSNKTFNLEKQNHTPRKHQHQQHQQHQQQPPPPPIPANGQQASSQNEGLTIDLKNFRKPGKTF
 TQRSRLFVGNLPPDITEEEMRKLFEKYGKAGEVFIHKDKGFGFIRLETRTLAEIAKVELDNMPLRGKQLR
 VRFACHSASLTVRNLPQYVSNELLEAFSVFGQVERAVVIVDDRGRPSGKGIVFSGKPAARKALDRCSE
 GSFLLTTFPRPVTVEPMDQLDDEEGLPEKLVIKNQFHKEREQPPRFAQPGSFEYAYMRWKALIEMEKQ
 QQDQVDRNIKEAREKLEMEMEAARHEHQVLMRQDLMRRQEELRRMEELHNQEVQKRKQLELRQEEERRR
 REEEMRRQEEEMRRQEGFKGTFPDAREQEIRMGQMAMGGAMGINNRGAMPAPVPAGTPAPPGPATMM
 PDGTLGLTPPTTERFGQAATMEGIGAIGGTPPAFNRAAPGAEFAPNKRRRY

TRTRPLEQKLISEEDLAANDILDYKDDDDKV

Chromatograms:

https://cdn.origene.com/chromatograms/mk6197_b05.zip

Restriction Sites:

Sgfl-Mlul

Cloning Scheme:

Cloning sites used for ORF Shutting:



* The last codon before the Stop codon of the ORF

ACCN: NM_001145409

ORF Size: 1413 bp

OTI Disclaimer: The molecular sequence of this clone aligns with the gene accession number as a point of reference only. However, individual transcript sequences of the same gene can differ through naturally occurring variations (e.g. polymorphisms), each with its own valid existence. This clone is substantially in agreement with the reference, but a complete review of all prevailing variants is recommended prior to use. [More info](#)

OTI Annotation: This clone was engineered to express the complete ORF with an expression tag. Expression varies depending on the nature of the gene.

Components: The ORF clone is ion-exchange column purified and shipped in a 2D barcoded Matrix tube containing 10ug of transfection-ready, dried plasmid DNA (reconstitute with 100 ul of water).

Reconstitution Method:

1. Centrifuge at 5,000xg for 5min.
2. Carefully open the tube and add 100ul of sterile water to dissolve the DNA.
3. Close the tube and incubate for 10 minutes at room temperature.
4. Briefly vortex the tube and then do a quick spin (less than 5000xg) to concentrate the liquid at the bottom.
5. Store the suspended plasmid at -20°C. The DNA is stable for at least one year from date of shipping when stored at -20°C.

RefSeq: [NM_001145409.2](#)
RefSeq Size: 3057 bp

RefSeq ORF: 1416 bp

Locus ID: 4841

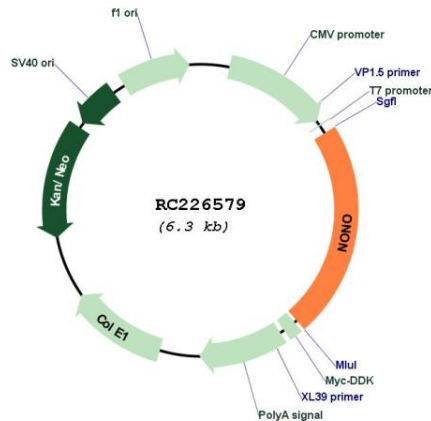
UniProt ID: [Q15233](#)
Cytogenetics: Xq13.1

Protein Families: Druggable Genome, Transcription Factors

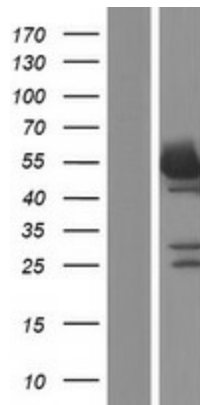
MW: 54.2 kDa

Gene Summary: This gene encodes an RNA-binding protein which plays various roles in the nucleus, including transcriptional regulation and RNA splicing. A rearrangement between this gene and the transcription factor E3 gene has been observed in papillary renal cell carcinoma. Alternatively spliced transcript variants have been described. Pseudogenes exist on Chromosomes 2 and 16. [provided by RefSeq, Feb 2009]

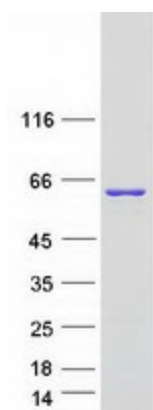
Product images:



Circular map for RC226579



Western blot validation of overexpression lysate (Cat# [LY428869]) using anti-DDK antibody (Cat# [TA50011-100]). Left: Cell lysates from untransfected HEK293T cells; Right: Cell lysates from HEK293T cells transfected with [RC226591] using transfection reagent MegaTran 2.0 (Cat# [TT210002]).



Coomassie blue staining of purified NONO protein (Cat# [TP326579]). The protein was produced from HEK293T cells transfected with NONO cDNA clone (Cat# RC226579) using MegaTran 2.0 (Cat# [TT210002]).