

Product datasheet for **RC226571**

IL11RA (NM_001142784) Human Tagged ORF Clone

Product data:

Product Type:	Expression Plasmids
Product Name:	IL11RA (NM_001142784) Human Tagged ORF Clone
Tag:	Myc-DDK
Symbol:	IL11RA
Synonyms:	CRSDA
Mammalian Cell Selection:	Neomycin
Vector:	pCMV6-Entry (PS100001)
E. coli Selection:	Kanamycin (25 ug/mL)



[View online »](#)

ORF Nucleotide Sequence:

>RC226571 ORF sequence
 Red=Cloning site Blue=ORF Green=Tags(s)

TTTTGTAATACGACTCACTATAGGGCGGCCGGAATTCGTCGACTGGATCCGGTACCGAGGAGATCTGCC
 GCC**CGGATCGCC**

ATGAGCAGCAGCTGCTCAGGGCTGAGCAGGGTCTGGTGGCCGTGGCTACAGCCCTGGTGTCTGCCTCCT
 CCCCTGCCCCAGGCCTGGGGCCCCAGGGTCCAGTATGGCAGCCAGGCAGGTCCTGAAGCTGTG
 TTGTCCTGGAGTGACTGCCGGGACCCAGTGTCTGGTTTCGGGATGGGAGCCAAAGCTCTCCAGGGA
 CCTGACTCTGGGTAGGGCATGAACTGGTCTGGCCAGGCAGACAGCACTGATGAGGGCACCTACATCT
 GCCAGACCCTGGATGGTGCACCTGGGGGCACAGTACCCTGCAGCTGGGCTACCCTCCAGCCGCCCTGT
 TGTCTCTGCCAAGCAGCCGACTATGAGAACTTCTTTGCACTTGGAGTCCAGCCAGATCAGCGGTTTA
 CCCACCCGCTACCTCACCTCTACAGGAAGAAGACAGTCTAGGAGCTGATAGCCAGAGGAGGATCCAT
 CCACAGGGCCCTGGCCATGCCACAGGATCCCCTAGGGGCTGCCGCTGTGTTGCCACGGGGCTGAGTT
 CTGGAGCCAGTACCGATTAATGTGACTGAGGTGAACCCACTGGGTGCCAGCACACGCTCTGGATGTG
 AGCTTGCAGAGCATCTTGCGCCCTGACCCACCCAGGGCTGCGGGTAGAGTCACTACCAGGTTACCCCC
 GACGCCTGCGAGCCAGCTGGACATACCCTGCCTCTGGCCGTGCCAGCCCACTTCTGTCTCAAGTCCG
 TTTGCAGTACCGTCCGGCGCAGCATCCAGCCTGGTCCACGGTGGAGCCAGCTGGACTGGAGGAGGTGATC
 ACAGATGCTGTGGCTGGGCTGCCCATGCTGTACGAGTCACTGCCCAGGACTTTCTAGATGCTGGCACCT
 GGAGCACCTGGAGCCCGAGGCCTGGGGAACCTCCGAGCACTGGGACCATAACAAAGGAGATACCAGCATG
 GGGCCAGCTACACACGCAGCCAGAGGTGGAGCCTCAGGTGGACAGCCCTGCTCTCAAGGCCCTCCCTC
 CAACCACACCCTCGGCTACTTGATCACAGGACTCTGTGGAGCAGGTAGCTGTGCTGGCGCTTTTGGGAA
 TCCTTTCTTTCTGGGACTGGTGGCTGGGGCCCTGGCACTGGGGCTCTGGCTGAGGCTGAGACGGGGTGG
 GAAGGATGGATCCCCAAGCCTGGGTTCTTGGCCTCAGTGATTCAGTGGACAGGGCTCCAGGAGCTCCA
 AACCTG

ACGCGTACGCGGCCGCTCGAGCAGAACTCATCTCAGAAGAGGATCTGGCAGCAATGATATCCTGGATT
 ACAAGGATGACGACGATAAGGTTTAA

Protein Sequence:

>RC226571 protein sequence
 Red=Cloning site Green=Tags(s)

MSSSCGLSRVLVAVATALVSASSPCPQAWGPPGVQYQGPGRSVKLCPCGVTAGDPVSWFRDGEPEKLLQG
 PDSGLGHEL VLAQADSTDEGTICQTLDGALGGTVTLQLGYPPARPVVSCQAADYENF SCTWSPSQISGL
 PTRYLTSYRKKTVLGADSRSPSTGPWPCPDPLGAARCVVHGAEFWSQYRINVTEVNPLGASTRLLDV
 SLQSI LRDPDPQGLRVESVPGYPRRLRASWTYPASWPCPHFLKFRLLQYRPAQHPAWSTVEPAGLEEVI
 TDAVAGLPHAVRVSARDFLDAGTWSTWSPEAWGTPSTGTIPKEIPAWQLHTQPEVEPQVDS PAPP RPSL
 QPHPRLLDHRDSVEQVAVLASLGILSFLGLVAGALALGLWLRRLRRGGKDGSPKPGFLASVIPVDRRPGAP
 NL

TRTRPLEQKLISEEDLAANDILDYKDDDDKV

Chromatograms:

https://cdn.origene.com/chromatograms/mk6583_h09.zip

Restriction Sites:

SgfI-MluI

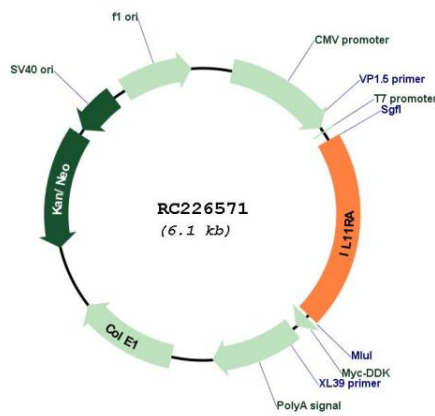
Protein Families: Druggable Genome, Transmembrane

Protein Pathways: Cytokine-cytokine receptor interaction, Hematopoietic cell lineage, Jak-STAT signaling pathway

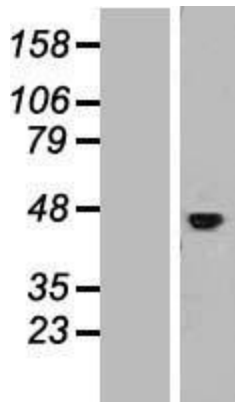
MW: 45.2 kDa

Gene Summary: Interleukin 11 is a stromal cell-derived cytokine that belongs to a family of pleiotropic and redundant cytokines that use the gp130 transducing subunit in their high affinity receptors. This gene encodes the IL-11 receptor, which is a member of the hematopoietic cytokine receptor family. This particular receptor is very similar to ciliary neurotrophic factor, since both contain an extracellular region with a 2-domain structure composed of an immunoglobulin-like domain and a cytokine receptor-like domain. Multiple alternatively spliced transcript variants have been found for this gene. [provided by RefSeq, Jun 2012]

Product images:



Circular map for RC226571



Western blot validation of overexpression lysate (Cat# [LY428277]) using anti-DDK antibody (Cat# [TA50011-100]). Left: Cell lysates from untransfected HEK293T cells; Right: Cell lysates from HEK293T cells transfected with RC226571 using transfection reagent MegaTran 2.0 (Cat# [TT210002]).