

Product datasheet for **RC226567**

NONO (NM_001145408) Human Tagged ORF Clone

Product data:

Product Type:	Expression Plasmids
Product Name:	NONO (NM_001145408) Human Tagged ORF Clone
Tag:	Myc-DDK
Symbol:	NONO
Synonyms:	MRXS34; NMT55; NRB54; P54; P54NRB; PPP1R114
Mammalian Cell Selection:	Neomycin
Vector:	pCMV6-Entry (PS100001)
E. coli Selection:	Kanamycin (25 ug/mL)



[View online »](#)

ORF Nucleotide Sequence:

>RC226567 ORF sequence
 Red=Cloning site Blue=ORF Green=Tags(s)

TTTTGTAATACGACTCACTATAGGGCGGCCGGAATTCGTCGACTGGATCCGGTACCGAGGAGATCTGCC
 GCC**GCGATCGCC**

ATGCAGAGTAATAAACTTTTAACTTGGAGAAGCAAACCATACTCCAAGAAAGCATCATCAACATCACC
 ACCAGCAGCAGCACCACCAGCAGCAACAGCAGCAGCCACCACCGCCAATACCTGCAAATGGGCAACA
 GGCCAGCAGCAAAATGAAGGCTTGACTATTGACCTGAAGAATTTAGAAAACCAGGAGAGAAGACCTTC
 ACCCAACGAAGCCGTCTTTTGTGGAAATCTTCTCCCGACATCACTGAGGAAGAAATGAGGAACTAT
 TTGAGAAATATGGAAAGGCAGGCGAAGTCTTATTATAAGGATAAAGGATTTGGCTTTATCCGCTTGA
 AACCCGAACCCTAGCGGAGATTGCCAAAGTGGAGCTGGACAATATGCCACTCCGTGGAAAGCAGTGCCT
 GTGCGCTTTGCCTGCCATAGTGCATCCCTACAGTTCGAAACCTTCTCAGTATGTGTCCAACGAACTGC
 TGAAGAAGCCTTTTCTGTGTTGGCCAGGTAGAGAGGGCTGTAGTCATTGTGGATGATCGAGGAAGGCC
 CTCAGGAAAAGCATTGTTGAGTCTCAGGGAAGCCAGCTGCTCGAAAGCTCTGGACAGATGCAGTGAA
 GGCTCCTTCTGTGTAACCACATTTCTCTGCTGTGACTGTGGAGCCATGGACCAGTTAGATGATGAAG
 AGGGACTTCCAGAGAAGCTGGTTATAAAAAACCAGCAATTTACAAGGAACGAGAGCAGCCACCCAGATT
 TGCACAGCCTGGCTCCTTTGAGTATGAATATGCCATGCGCTGGAAGGCACTCATTGAGATGGAGAAGCAG
 CAGCAGGACCAAGTGGACCGCAACATCAAGGAGGCTCGTGAGAAGCTGGAGATGGAGATGGAAAGTGCAC
 GCCATGAGCACCAGGTATGCTAATGAGACAGGATTTGATGAGGCGCAAGAAGAACTTCGGAGGATGGA
 AGAGCTGCACAACCAAGAGGTGCAAAAACGAAAGCAACTGGAGCTCAGGCAGGAGGAAGAGCGCAGGCGC
 CGTGAAGAAGAGATGCGGCGCAGCAAGAAGAAATGATGCGGCGACAGCAGGAAGGATTCAGGGAACCT
 TCCCTGATGCGAGAGAGCAGGAGATTCCGATGGGTGAGTATGGGAGGTGCTATGGCATAAACAA
 CAGAGGTGCCATGCCCCCTGCTCTGTGCCAGCTGGTACCCAGCTCCTCCAGGACCTGCCACTATGATG
 CCGGATGGAACCTTTGGGATTGACCCACCAACAACTGAACGCTTTGGTCAAGGCTGCTACAATGGAAGGAA
 TTGGGGCAATTGGTGAACCTCCTCTGCATTCAACCGTGCAGCTCCTGGAGCTGAATTTGCCCAACAA
 ACGTCGCCGATAC

ACGCGTACGCGGCCGCTCGAGCAGAAACTCATCTCAGAAGAGGATCTGGCAGCAAATGATATCCTGGATT
 ACAAGGATGACGACGATAAGGTTTAA

Protein Sequence:

>RC226567 protein sequence
 Red=Cloning site Green=Tags(s)

MQSNKTFNLEKQNHTPRKHQHQQHHQHHQQQQPPPPPIPANGQQASSQNEGLTIDLKNFRKPGKTF
 TQRSRLFVGNLPPDITEEEMRKLFEKYGKAGEVF IHKDKGFGFIRLETRTLAEIAKVELDNMPLRGKQLR
 VRFACHSASLTVRNLPQYVSNELLEAFSVFGQVERAVVIVDDRGRPSGKGIVFSGKPAARKALDRCSE
 GSFLLTTFPRPVTVEPMDQLDDEEGLPEKLVIKNQFHKEREQPPRFAQPGSFEYAYMRWKAL IEMEQ
 QQDQVDRNIKEAREKLEMEMEAARHEHQVLMRQDLMRRQEELRRMEELHNQEVQKRKQLELRQEEERRR
 REEEMRRQEEEMRRQEGFKGTFPDAREQEIRMGQMAMGGAMGINNRGAMPAPVPAGTPAPPGPATMM
 PDGTLGLTPPTTERFQAATMEGIGAIGGTPPAFNRAAPGAEFAPNKRRRY

TRTRPLEQKLISEEDLAANDILDYKDDDDKV

Chromatograms:

https://cdn.origene.com/chromatograms/mk6197_b05.zip

Restriction Sites:

Sgfl-Mlul

Cloning Scheme:


ACCN: NM_001145408

ORF Size: 1413 bp

OTI Disclaimer: Due to the inherent nature of this plasmid, standard methods to replicate additional amounts of DNA in E. coli are highly likely to result in mutations and/or rearrangements. Therefore, OriGene does not guarantee the capability to replicate this plasmid DNA. Additional amounts of DNA can be purchased from OriGene with batch-specific, full-sequence verification at a reduced cost. Please contact our customer care team at custsupport@origene.com or by calling 301.340.3188 option 3 for pricing and delivery.

The molecular sequence of this clone aligns with the gene accession number as a point of reference only. However, individual transcript sequences of the same gene can differ through naturally occurring variations (e.g. polymorphisms), each with its own valid existence. This clone is substantially in agreement with the reference, but a complete review of all prevailing variants is recommended prior to use. [More info](#)

OTI Annotation: This clone was engineered to express the complete ORF with an expression tag. Expression varies depending on the nature of the gene.

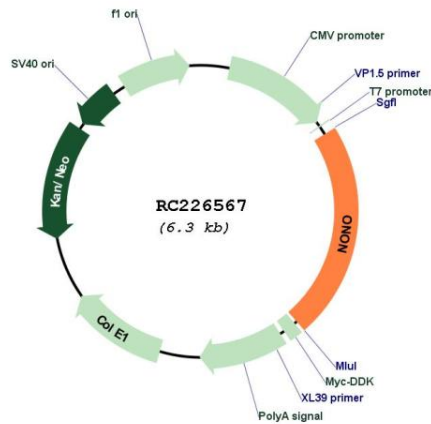
Components: The ORF clone is ion-exchange column purified and shipped in a 2D barcoded Matrix tube containing 10ug of transfection-ready, dried plasmid DNA (reconstitute with 100 ul of water).

- Reconstitution Method:**
1. Centrifuge at 5,000xg for 5min.
 2. Carefully open the tube and add 100ul of sterile water to dissolve the DNA.
 3. Close the tube and incubate for 10 minutes at room temperature.
 4. Briefly vortex the tube and then do a quick spin (less than 5000xg) to concentrate the liquid at the bottom.
 5. Store the suspended plasmid at -20°C. The DNA is stable for at least one year from date of shipping when stored at -20°C.

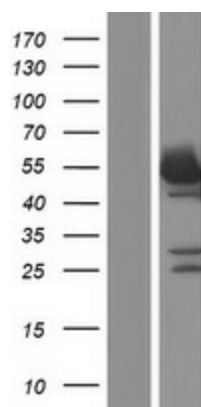
RefSeq: [NM_001145408.2](#)
RefSeq Size: 3228 bp
RefSeq ORF: 1416 bp
Locus ID: 4841
UniProt ID: [Q15233](#)
Cytogenetics: Xq13.1
Protein Families: Druggable Genome, Transcription Factors
MW: 54.2 kDa

Gene Summary: This gene encodes an RNA-binding protein which plays various roles in the nucleus, including transcriptional regulation and RNA splicing. A rearrangement between this gene and the transcription factor E3 gene has been observed in papillary renal cell carcinoma. Alternatively spliced transcript variants have been described. Pseudogenes exist on Chromosomes 2 and 16. [provided by RefSeq, Feb 2009]

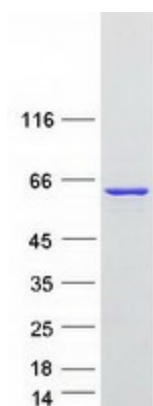
Product images:



Circular map for RC226567



Western blot validation of overexpression lysate (Cat# [LY428869]) using anti-DDK antibody (Cat# [TA50011-100]). Left: Cell lysates from untransfected HEK293T cells; Right: Cell lysates from HEK293T cells transfected with [RC226591] using transfection reagent MegaTran 2.0 (Cat# [TT210002]).



Coomassie blue staining of purified NONO protein (Cat# [TP326567]). The protein was produced from HEK293T cells transfected with NONO cDNA clone (Cat# RC226567) using MegaTran 2.0 (Cat# [TT210002]).