

## Product datasheet for **RC226566**

### Apolipoprotein L 1 (APOL1) (NM\_001136540) Human Tagged ORF Clone

#### Product data:

Product Type:	Expression Plasmids
Product Name:	Apolipoprotein L 1 (APOL1) (NM_001136540) Human Tagged ORF Clone
Tag:	Myc-DDK
Symbol:	Apolipoprotein L 1
Synonyms:	APO-L; APOL; APOL-I; FSGS4
Mammalian Cell Selection:	Neomycin
Vector:	pCMV6-Entry (PS100001)
E. coli Selection:	Kanamycin (25 ug/mL)
ORF Nucleotide Sequence:	>RC226566 ORF sequence Red=Cloning site Blue=ORF Green=Tags(s)

TTTTGTAATACGACTCACTATAGGGCGGCCGGAATTCGTCGACTGGATCCGGTACCGAGGAGATCTGCC  
GCC**CGATCGCC**

ATGGAGGGAGCTGCTTTGCTGAGAGTCTCTGTCCTCTGCATCTGGATGAGTGCACCTTTCTTGGTGTGG  
GAGTGAGGGCAGAGGAAGCTGGAGCGAGGGTGCAACAAAACGTTCCAAGTGGGACAGATACTGGAGATCC  
TCAAAGTAAGCCCTCGGTGACTGGGCTGCTGGCACCATGGACCCAGAGAGCAGTATCTTTATTGAGGAT  
GCCATTAAGTATTTCAAGGAAAAAGTGAACACACAGAATCTGCTACTCCTGCTGACTGATAATGAGGCC  
GGAACGGATTCGTGGCTGCTGCTGAAGTCCCAGGAATGAGGCAGATGAGCTCCGTAAGCTCTGGACAA  
CCTTGCAAGACAAATGATCATGAAAGACAAAACCTGGCAGATAAAGGCCAGCAGTACAGAACTGGTTT  
CTGAAAGAGTTTCTCGGTTGAAAAGTAAAGCTTGAGGATAACATAAGAAGGCTCCGTGCCCTTGAGATG  
GGTTCAGAAGGTCCACAAGGCCACCACCATCGCCAATGTGGTGTCTGGCTCTCTCAGCATTTCTCTG  
CATCCTGACCCTCGTCGGCATGGGTCTGGCACCCTTCACAGAGGGAGGCAGCCTTGACTCTTGGAACT  
GGGATGGAGTTGGGAATCACAGCAGCTTTGACCGGATTACCAGCAGTACCATAGACTACGGAAAGAAGT  
GGTGGACACAAGCCCAAGCCACGACCTGGTCACTAAAAGCCTTGACAAATTGAAGGAGGTGAAGGAGTT  
TTGGGTGAGAACATATCAACTTTCTTTCCTTAGCTGGCAATACTTACCAACTCACACGAGGCATTGGG  
AAGGACATCCGTGCCCTCAGACGAGCCAGAGCCAATCTTCAGTCAGTACCGCATGCCCTCAGCCTCAGCC  
CCCGGTCAGTACGCAATCTCAGCTGAAAGCGGTGAACAGGTGGAGAGAGTTAATGAACCCAGCATCCT  
GGAAATGAGCAGAGGAGTCAAGCTCACGGATGTGGCCCTGTAAGCTTCTTTCTTGTGCTGGATGTAGTC  
TACCTCGTGTACGAATCAAAGCACTTACATGAGGGGGCAAAGTCAGAGACAGCTGAGGAGCTGAAGAAGG  
TGGCTCAGGAGCTGGAGGAGAAGCTAAACATTCTCAACAATAATTATAAGATTCTGCAGGCGGACCAAGA  
ACTG

**ACGCGT**ACGCGGCCGCTCGAGCAGAACTCATCTCAGAAGAGGATCTGGCAGCAATGATATCCTGGATT  
ACAAGGATGACGACGATAAGGTTTAA





**Reconstitution Method:**

1. Centrifuge at 5,000xg for 5min.
2. Carefully open the tube and add 100ul of sterile water to dissolve the DNA.
3. Close the tube and incubate for 10 minutes at room temperature.
4. Briefly vortex the tube and then do a quick spin (less than 5000xg) to concentrate the liquid at the bottom.
5. Store the suspended plasmid at -20°C. The DNA is stable for at least one year from date of shipping when stored at -20°C.

**RefSeq:** [NM\\_001136540.1](#), [NP\\_001130012.1](#)

**RefSeq Size:** 2924 bp

**RefSeq ORF:** 1197 bp

**Locus ID:** 8542

**UniProt ID:** [O14791](#)

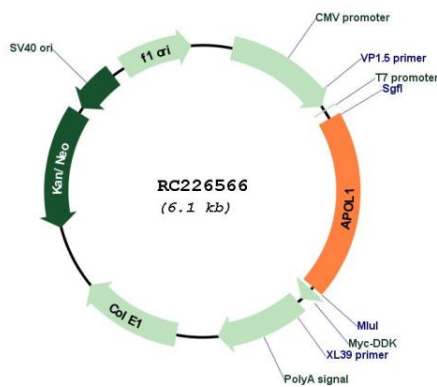
**Cytogenetics:** 22q12.3

**Protein Families:** Secreted Protein, Transmembrane

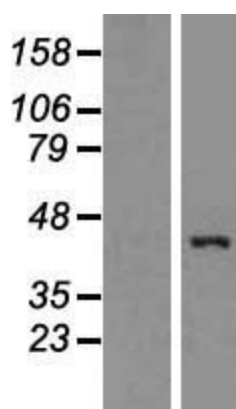
**MW:** 43.9 kDa

**Gene Summary:** This gene encodes a secreted high density lipoprotein which binds to apolipoprotein A-I. Apolipoprotein A-I is a relatively abundant plasma protein and is the major apoprotein of HDL. It is involved in the formation of most cholesteryl esters in plasma and also promotes efflux of cholesterol from cells. This apolipoprotein L family member may play a role in lipid exchange and transport throughout the body, as well as in reverse cholesterol transport from peripheral cells to the liver. Several different transcript variants encoding different isoforms have been found for this gene. [provided by RefSeq, Nov 2008]

**Product images:**



Circular map for RC226566



Western blot validation of overexpression lysate (Cat# [LY427915]) using anti-DDK antibody (Cat# [TA50011-100]). Left: Cell lysates from untransfected HEK293T cells; Right: Cell lysates from HEK293T cells transfected with RC226566 using transfection reagent MegaTran 2.0 (Cat# [TT210002]).