

Product datasheet for **RC226564**

RGPD4 (NM_182588) Human Tagged ORF Clone

Product data:

Product Type:	Expression Plasmids
Product Name:	RGPD4 (NM_182588) Human Tagged ORF Clone
Tag:	Myc-DDK
Symbol:	RGPD4
Synonyms:	RGP4
Mammalian Cell Selection:	Neomycin
Vector:	pCMV6-Entry (PS100001)
E. coli Selection:	Kanamycin (25 ug/mL)
ORF Nucleotide Sequence:	>RC226564 representing NM_182588 Red=Cloning site Blue=ORF Green=Tags(s)

TTTTGTAATACGACTCACTATAGGGCGGCCGGAATTCGTCGACTGGATCCGGTACCGAGGAGATCTGCC
GCC**CGATCGCC**

ATGAGTTGCAGCAAGGCCTACGGGGAGCGGTACGTCGCTCCGTGCAGGGCTCCGCCCGTCGCCTCGAA
AGAAGTCAACGAGAGGATTCTATTTGCAAAGCTGTATTGAAGCTAAAGAATATGATCTTGCTAAAAA
ATACATATGTACTTACATTAATGTGCGAGAGATGGATCCCAGAGCTCACAGATTTCTGGGCTTCTTTAT
GAATTGGAAGAAAACACAGAGAAAGCCGTTGAATGTTACAGGCGTTCAGTGAATTAACCCAACACAAA
AAGATCTGGTGTGAAGATTGCAGAATTGCTTTGTA AAAATGATGTTACTGATGGAAGAGCAAAACTG
GGTGGAAAGAGCAGCAAACTTTCCAGGAAGTCCTGCAATTTATAAACTAAAGGAACAGCTTCTAGAT
TGTGAAGGTGAAGATGGATGGAATAAACTTTTGACTTGATTCAGTCAGAACTTTATGTAAGACCTGATG
ACGTCCATGTGAACATCCGGCTAGTGGAGTTGTATCGCTCAACTAAAAGATTGAAGGATGCTGTGGCCCG
CTGCCATGAGGCAGAGAGGAACATAGCTTTGCGTTCAAGTTTAGAGTGGAAATTCGTGTGTTGACAGACC
CTTAAGGAATATCTGGAGTCTTTACAGTGTGGAGTCTGATAAAAAGTACTGGCGAGCAACCAATACAG
ACTTACTGCTGGCCTATGCTAATCTTATGCTTCTACGCTTTCCACTAGAGATGTGCAGGAAAGTAGAGA
ATTACTGGAAAGTTTTGATAGTCTCTTCAGCTGCGAAATCTTCTTTGGGTGGAATGATGAACGTCA
GCTACTTTCTTAGAAATGAAAGGACATTTCTACATGCATGCTGGTCTCTGCTCTTGAAGATGGGTCAGC
ATGGTAATAATGTTCAATGGCGAGCTCTTCTGAGCTGGCTGCATTGTGCTATCTCATAGCATTTCAGGT
TCCAAGACCAAAGATTAATTAATAAAAAGTGAAGCTGGACAAAATCTGCTGGAATGATGGCCTGTGAC
CGACTGAGCCAATCAGGGCACATGTTGCTAAACTTAAGTCGTGGCAAGCAAGATTTTTAAAAGTGGTTG
TTGAAACTTTTGCCAACAAAAGCGGCAGTCTGCATTATATGATGCTCTGTTTTCTAGTCAGTCACCTAA
GGATACATCTTTCTGGTAGCGATGATATTGAAACATTGATGTACAAGAACCAGAGCTTGAAGATTTG
GCTAGATACGATGTTGGTGTCTATTCGAGCACATAATGGTAGTCTTCAGCACCTTACTTGGCTTGGCTTAC
AGTGAATTCATTGCCTGCTTACCTGGAATCCGAAAATGGCTAAAACAGCTTTCCATCATTTGCCCA
GGAAACCTCAAGGCTTGAACAAATGCACCTGAATCAATATGATTTTAGATCTTGAAGTATTTCTCTT



[View online »](#)

GGAGTAGTATATACCAGCCAATTACAATTAAGGAGAAATGTAATTCTCACCACAGCTCCTATCAGCCGT
TATGCCTGCCCTTCTGTATGTAAACAGCTTTGTACAGAAAGACAAAACTTGGTGGGATGCGGTTTG
TACTCTGATTCACAGAAAAGCAGTACCTGGAACTCAGCAAAATTGAGACTTTTGTTCAGCATGAAATA
AACACTTAAGAGCCCAGGAAAAACATGGCCTTCAACCTGCTCTGCTGTACATTGGGCAAAATGCCTTC
AGAAAAATGGGCAGTGGTCTTAATCTTTTTATGATCAACGAGAATACATAGGGAGAAGTGTTCATTATTG
GAAGAAAGTTTTGCCATTGTTGAAGATAATAAAAAAGAAGAACAGTATTCCTGAACCTATTGATCCTCTG
TTTAAACATTTTCATAGTGTAGACATTCAGGCATCAGAAATTGTTGAATATGAAGAAGACGCACACGTAA
CTTTTGCTATATTGGATGCAGTAAATGGAAATATAGAAGATGCTATGACTGCTTTTGAATCTATAAAAAAG
TGTTGTTTCTTATTGGAATCTTGCACTGATTTTTTACAGGAAGGCAGAAGACATTGCAAAATGATGCCCTT
TCTCTGAAGAACAAGAAGAATGCAAAAATATCTGAGAAAGACCAGGGGCTACCTAATAAAGATTTTAG
ATGACAGTGATTCAAACTTTTCACTGGTCAAGAAATTGCCTGTGCCCTGGAGTCTGTAAGAGAGATGCT
TAAGTCAGTCATGCAGGAACTCGAAAATATAGTGAAGGAGATCCTCTATAAAAAATGGTCTTTGCGA
AATGCGGATTGAGAAATAAACATTCTACACCATCTCTACCAATATTCACTATCACCAGTAAAAGTT
ACAAGTATTCTCCAAAAACACCCTCGATGGCAGAAGATCAGAATCTTTACTGAAAAATGATTCGCCA
AGAAGTAAAGGCCATTAAAGGAAGAAATGCAGGAGTTGAACTAAATAGCAGTAAGTCAGCATCCCATCAT
CGTTGGCCACAGAGAATTATGGACCAGACTCGGTGCCTGATGGATATCAGGGGTACAGACATTTTCATG
GGCTCCACTAACAGTTGCAACTACTGGCCTTCAGTATATTATAGTCAGTCACCAGCATATAATCCCA
GTATCTTCTCAGACCAGCAGCTAATGTTACTCCCAAAAGGGTCTTCTAATACAGAATTTAAGTCAACC
AAAGAAGGATTTCCATCCCTGTGTCTGCTGATGGATTTAAATTTGGCATTTCGGAACCAGGAAATCAAG
AAAAGGAAAGTAAAAAGCCTCTTGAAAAATGATACTGGCTTCCAGGCTCAGGATATTAGTGGCCAGAAGAA
TGGCCGTGGTGTGATTTTTGGCCAAACAAGTAGCACTTTTACATTTGCAGATGTTGCAAAATCAACTTCA
GGAGAAGGATTTCACTTTGGCAAAAAGACCCCAATTTCAAGGGATTTTCAGTGTCTGGAGAAAAATTA
TCTCATCACAATGCGGTAAAATGGCCAATAAAGCAAACTTCCGGTGACTTTGAGAAAAATGATGATGC
CTATAAGACTGAGGACAGCGATGACATCCATTTTGAACCAAGTAGTTCAAATGCCTGAAAAAGTGAACCT
GTAATAGGAGAAGAAGGTGAAAAAGTTCTGTATTCACAGGGGTAAAATCTTTAGATTTGATGCTGAGG
TAAGGCAGTGGAAAGAAAGGGCTTGGGAACTTAAAAATCTCAAAAACGAGGTCAATGGCAAACCAAG
AATGCTGATGCGAAGAGAACAAGTACTAAAAGTGTGTGCTAATCATTGGATAACGACTACAATGAACCTG
AAGCCCTGTCTGGATCAGATAGAGCATGGATGTGGTCAGCCAGTGATTTCTCTGATGGTATGCCAAAC
TAGAGCGTTAGCAGCAAAATTTAAAACACCAGAGCTGGCTGAAGAATTCAGCAGAAATTTGAGGAATG
CCAGCAGCTTCTGTTAGACATACCCTTCAAACCTCCCAATAAATCTGTAGATACTGGCAGAGCTGCCAAG
TTAATACAGAGAGCTGAAGAAATGAAGAGTGGACTGAAAGATTTCAAACATTTTGAACAATGATCAAA
CAAAAGTCACTGAGGAAGAAAATAAAGGGTTCAGGTACAGGTGCGCCGGTGCCTCAGACACAACAATAAA
ACCCAATCCTGAAAACACTGGGCCACATTAGAATGGGATAACTGTGATTTAAGGGAAGATGCTTTGGAT
GATAGTGTGAGTAGTGTAGTACATGCTTCTCCATTGGCAAGTAGCCCTGTGAGAAAAATCTTTTCC
ATTTTGGTGTGATCAACAACAGGATCTAACTTCACTTTTAAATCTGCTTTGAGTCCATCTAAGTCTCCTGC
CAAGTTGAATCAGAGTGGGACTTCACTTGGCACTGATGAAGAATCTGATGTTACTCAAGAAGAAGAGAGA
GATGGACAGTACTTTGAACCTGTTGTTCTTTACCTGATCTAGTTGAAGTATCCAGTGGTGGGAAAAATG
AAAAAGTTGTTTTAGTCACAGGGCAGAACTCTACAGATATGATAAAGATGTTGGTCAATGGAAAGAAAG
GGCATTGGTGATATAAAGATTTTACAGAATTATGATAAAGCAAGTTCTGATAGTGTGAGAAAGGGAC
CAAGTATTAACCTTTGTGCAATCACACAATAACTCCAGACATGAGTTTGCAAAATATGAAAGGGACAG
AAAGAGTATGGGTGTGGACTGCATGTGATTTTGCAGATGGAGAAAGAAAAGTAGAGCATTAGCTGTTCTG
TTTTAACTACAGGATGTTGCAGACTCGTTTAAAGAAAATTTTGTGATGAAGCAAAAACAGCCAGGAAAAA
GATTTCTTGATAACACCTCATGTTTCTCGGTCAAGCACTCCAGAGAGTCCCATGTGGCAAAATTTGCTG
TAGCTGTATTAGAAGAAACCACAAGAGAGAGGACAGATGTTATTCAGGGTGTGATGTAGCAGATGCAGC
TTCAGAAGTTGAAGTGTCTAGCACATCTGAAACAACAACAAAAGCAGTGGTTTCTCTCAAAGTTTGTG
TTTGGTTCAGAGTCTGTTAAAAGAATTTTATGATGAAAAATCAAACCATTTGCATTTGGCAACAGTT
CTGCCACTGGGTCTTTGTTTGGATTTAGTTTAAATGCATCTTTGAAAAGTAAACAACAGTAAACTAGTTC
AGTAGCCAGAGTGGATCTGAAAGCAAAAGTGAACCTAAAAAATGTGAAGTGTCAAAGAAGTCTGATATC
GAACAGTCTTCAGATAGCAAAGTCAAAAATCTCTCTGCTTCTTCCAATGGAAGATCTTCAATCAACT
ACACATTTAAAACACCAGAAAAGGAGCCTCCATTATGGCATGCTGAATTTACCAAAGAAGAAATGGTTCA
GAAGCTCAGTTCACCACAAAAGTGCAGATCACTTAAACGGCCTGCTTCGGGAAGCAGAGGCAACCAGT
GCAGTCTTATGGAGCAAATTAAGCTTCTCAAAGTGAATAAGAAGATTGGAAGGAATCAAGAGCAAG

AGGAGTCTGCAGCTAACGTGGAACACTGAAGAACGTCTTGCTGCAGTTCATTTTCTTGAAGCCAGGTAG
 TGAAAGAGAGAGACTTCTTCTGTTATAAATACGATGTTGCAGCTCAGCCCTGAAGAAAAGGGAAAACCT
 GCTGCGGTTGCTCAAGGTGAGGAA

ACGCGTACGCGGCCGCTCGAGCAGAACTCATCTCAGAAGAGGATCTGGCAGCAATGATATCCTGGATT
 ACAAGGATGACGACGATAAGGTTTAA

Protein Sequence:

>RC226564 representing NM_182588
 Red=Cloning site Green=Tags(s)

MSCSKAYGERIVASVQGSAPSPRKKSTRGFYFAKLYYEAKYDLAKKYICTYINVREMPRAHRFLGLLY
 ELEENTEKAVECYRRSVELNPTQKDLVLKIAELLCKNDVTDGRAKYWVERAAKLFPGPSAIYKLEQLLD
 CEGEDGWNKLFDLIQSELYVRPDDVHVNIIRLVELYRSTKRLKDAVARCHEAERNIALRSSLEWNSCVVQT
 LKEYLESQCLESDKSDWRATNTDLLLAYANMLLTLSTRDVQESRELLESFDSALQSAKSSLGGNDELS
 ATFLEMGHFYMHAGSLLKMGQHGNVQWRALSELAALCYLIAFQVPRPKIKLIKGEAGQNLEMMACD
 RLSQSGHMLLNL SRGKQDFLKVVVETFANKSGQSALYDALFSSQSPKDTSFLLGSDDIGNIDVQPEPEL
 ARYDVGAIRAHNGSLQHLTWLGLQWNSLPALPGIRKWLKQLFHHLQPETSRLTNAPEICILDLEVFLL
 GVYYTSHLQLKEKCNSHSSYQPLCLPLPVCKQLCTERQKSWWDVAVCTLIHRKAVPGNSAKLRLLVQHEI
 NTLRAQEKHGLQPALLVHWAKCLQKMGSLNSFYDQREYIGRSVHYWKKVPLLLKIKKKNSIPEPIDPL
 FKHFSVDIQASEIVEYEEDAHVTFAILDAVNGNIEDAMTAFESIKSVVSYWNLALIFHRKAEDIANDAL
 SPEEQEACKNYLRKTRGYLIKILDDSDSNLSVVKKLPVPLESVKEMLKSVMQELENYSEGDPYKNGSLR
 NADSEIKHSTPSPTKYSLSPSKSYKYSKTPPRWAEDQNSLLKMIHQEVKAIKEEMQELKLNSSKSASHH
 RWPTENYGPDSVPDGYQGSQTFHGAPLTVATTGPSVYYSQSPAYNSQYLLRPAANVTPTKGSNTEFKST
 KEGFSIPVSADGFKFGISEPGNQEKSEKPLENDTGFQAQDISGQKNGRVIFGQTSSTFFADVAKSTS
 GEGFQFGKDPNFKGFSGAGEKLFSSQCGMKANKANTSGDFEKDDAYKTEDSDDIHFEPVVMPEKVEL
 VIGEEGKVLYSQGVKLFRRDAEVRQWKERGLGNLILKNEVNGKPRMLMRREQVLKVCANHWITTTMNL
 KPLSGSDRAWMWSASDFSDGAKLERLAAKFKTPELAEFFKQKFECCQQLLLDIPLQTPHKLVDTGRAAK
 LIQRAEEMKSGLKDFKFTLNDQTKVTEENKSGTGAAGASDTTIKPNPENTGPTLEWDCDLREDALD
 DSVSSSVHASPLASSPVRKNL FHFGESTTGSNFSFKSALSPSKSPAKLNQSGTSVGTDEESDVTQEEER
 DGQYFEPVVPLPDLVEVSSGEENEKVVFSHRAELYRYDKDVGQWKERIGDIKILQNYDNKQVRIVMRRD
 QVLKLCANHTITPMSLQNMKGTERVWWTACDFADGERKVEHLAVRFKLQDVADSFKKIFDEAKTAQEK
 DSLITPHVSRSSTPRESPCGKI AVAVLEETTRERTDVIQGGDDVADAASEVEVSSTSETTTKAVVSPKFFV
 FGSESVKRIFSSEKSKPFAFGNSSATGSLFGFSFNASLKSNNSETSSVAQSGSESKVEPKKCELSKNSDI
 EQSSDSKVKNLSASFMEESSINYTFKTPKEPPLWHAFTKEELVQKLSSTTKSADHLNGLLREAEATS
 AVLMEQIKLLKSEIRRLERNQEQEESAANVEHLKNVLLQFIFLKPGERERLLPVINTMLQLSPEEKGL
 AAVAQGEE

TRTRPLEQKLISEEDLAANDILDYKDDDDKV

Chromatograms:

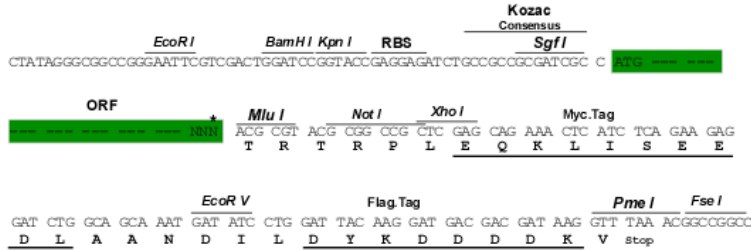
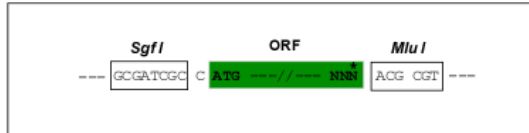
https://cdn.origene.com/chromatograms/mk8031_c06.zip

Restriction Sites:

Sgfl-Mlul

Cloning Scheme:

Cloning sites used for ORF Shutting:



* The last codon before the Stop codon of the ORF

ACCN: NM_182588

ORF Size: 5274 bp

OTI Disclaimer: The molecular sequence of this clone aligns with the gene accession number as a point of reference only. However, individual transcript sequences of the same gene can differ through naturally occurring variations (e.g. polymorphisms), each with its own valid existence. This clone is substantially in agreement with the reference, but a complete review of all prevailing variants is recommended prior to use. [More info](#)
OTI Annotation: This clone was engineered to express the complete ORF with an expression tag. Expression varies depending on the nature of the gene.

Components: The ORF clone is ion-exchange column purified and shipped in a 2D barcoded Matrix tube containing 10ug of transfection-ready, dried plasmid DNA (reconstitute with 100 ul of water).

Reconstitution Method:

1. Centrifuge at 5,000xg for 5min.
2. Carefully open the tube and add 100ul of sterile water to dissolve the DNA.
3. Close the tube and incubate for 10 minutes at room temperature.
4. Briefly vortex the tube and then do a quick spin (less than 5000xg) to concentrate the liquid at the bottom.
5. Store the suspended plasmid at -20°C. The DNA is stable for at least one year from date of shipping when stored at -20°C.

RefSeq: [NM_182588.3](#)

RefSeq ORF: 5277 bp

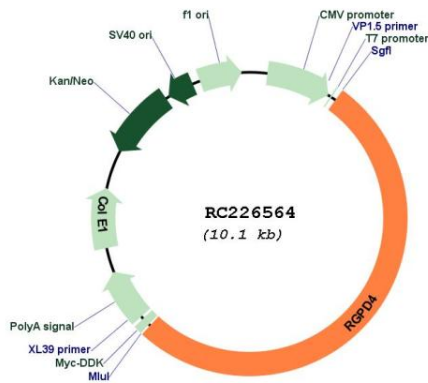
Locus ID: 285190

UniProt ID: [Q7Z3I3](#)

Cytogenetics: 2q12.3

MW: 197.1 kDa

Product images:



Circular map for RC226564