

Product datasheet for **RC226562**

GPR107 (NM_001136558) Human Tagged ORF Clone

Product data:

Product Type:	Expression Plasmids
Product Name:	GPR107 (NM_001136558) Human Tagged ORF Clone
Tag:	Myc-DDK
Symbol:	GPR107
Synonyms:	bA138E2.2; GCDRP; LUSTR1
Mammalian Cell Selection:	Neomycin
Vector:	pCMV6-Entry (PS100001)
E. coli Selection:	Kanamycin (25 ug/mL)



[View online »](#)

ORF Nucleotide Sequence:

>RC226562 representing NM_001136558
 Red=Cloning site Blue=ORF Green=Tags(s)

TTTTGTAATACGACTCACTATAGGGCGGCCGGAATTCGTCGACTGGATCCGGTACCGAGGAGATCTGCC
 GCC**CGCATCGCC**

ATGGCCGCTCTGGCGCCCGTTCGGCTCCCCGCCTCCCGCGGTCTAGGCTGGCCGCGGCCCTCCGGCTGC
 TCCAATGCTGGGTTTGTCTGCAGTTGTGGCCGAGCCTGGCTGGCCGCGGTCCATCACCTGGCACTCAA
 GGATGATGTGAGGCATAAAGTTCATCTGAACACCTTTGGCTTCTTCAAGGATGGGTACATGGTGGTGAAT
 GTCAGTAGCCTCTCACTGAATGAGCCTGAAGACAAGGATGTGACTATTGGATTTAGCCTAGACCGTACAA
 AGAATGATGGCTTTTCTTCTTACCTGGATGAAGATGTGAATTACTGTATTTAAAGAAACAGTCTGTCTC
 TGTACCCTTTTAAATCCTAGACATCTCCAGAAGTGAAGTAAGAGTAAAGTCTCCACCAGAAGCTGGTACC
 CAGTTACCAAAGATCATCTTCAGCAGGGATGAGAAAGTCTTGGTCCAGAGCCAGGAGCCTAATGTTAACCC
 CTGCTTCAGCAGGCAACCAGACCCAGAAGACACAAGATGGTGGAAAGTCTAAAAGAAGTACAGTGGATTC
 AAAGGCCATGGGAGAGAAATCCTTTCTGTTCATAATAATGGTGGGCAGTGTCTTTTCAGTCTTTCTTT
 AACATCAGCACTGATGACCAAGAAGGCCTTTACAGTCTTTATTTTCATAAATGCCTTGGAAAAGAATTGC
 CAAGTGACAAGTTTACATTCAGCCTTGATATTGAGATCACAGAGAAGAATCCTGACAGCTACCTCTCAGC
 AGGAGAAATTCCTCTCCCAAATATACATCTCAATGGCCTTTTCTTCTTTCTTTCTGGGACCATCTGG
 ATTCATATCCTTCGAAAACGACGGAAATGATGTATTTAAATCCACTGGCTGATGGCGGCCCTTCTTTTCA
 CCAAGTCTCTTCTTGGTGTCCATGCAATTGACTACCACTACATCTCTCCAGGGCTTCCCTATCGA
 AGGCTGGGCTGTGTGTACTACATAACTCACCTTTTGAAGGGGGCCTACTCTTCATCACCATTGCACTC
 ATTGGCACTGGCTGGGCTTTTATTAAGCACATCCTTTCTGATAAAGACAAAAAGATCTTCATGATTGTCA
 TTCCACTCCAGTCTGGCAAATGTAGCCTACATCATCATAGAGTCCACCGAGGAGGGCAGCATGAATA
 TGGCTTGTGGAAGGACTCTCTATTTCTGGTTCGACCTGTTGTGTTGTGGTGCATCCTCTTCCAGTGGTG
 TGGTCAATCAGACATTTACAAGAAGCATCAGCAACAGATGGAAAAGGTGACAGCATGGGACCTCTCAGC
 AGAGAGCGAATCTAAGAGCAGGAAGTCGCATAGCTGCTATTAAGTACGAAAGCTGAAACTTTTCAGACA
 TTATTACGCTTGTATTGTGTGTACATATACTTCACTAGGATCATTGCATTTCTCCTCAAACCTCGCTGT
 CCATTCCAGTGGAAAGTGGCTCTACCAGCTCCTGGATGAAACGGCCACACTGGTCTTCTTTGTTCTAACGG
 GGTATAAATCCGTCCGGCTTCCAGATAACCCCTACCTACAACCTTCTCAGGAAGAAGAAGACTTGGAAAT
 GGAGTCCGTTGTGACAACATCTGGGTGATGGAAAGTGAAGAAAGTCAAGAAGGTGACCAACGGCTCC
 GTGGAGCCCCAGGGCAGTGGGAAGGCGCCGTG

ACGCGTACGCGGCCGCTCGAGCAGAAACTCATCTCAGAAGAGGATCTGGCAGCAAATGATATCCTGGATT
 ACAAGGATGACGACGATAAGGTTTAA

Protein Sequence:

>RC226562 representing NM_001136558
 Red=Cloning site Green=Tags(s)

MAALAPVGSPASRGPRLAAGLRLLPMLGLLQLLAEPGLGRVHHLALKDDVRHKVHLNTEGFFKDGVMVNV
 VSSLNLNPEPKDVTIGFSLDRTKNDGFSYLDDEVNYCILKKQSVSVTLLILDISRSEVRVKSPPEAGT
 QLPKIIIFSRDEKVLGQSQEPNVNPASAGNQTQKTQDGGKSKRSTVDSKAMGEKFSVHNNGGAVSFQFFF
 NISTDDQEGLYSLYFHKCLGKELPSDKFTFSLDIEITEKNPDSYLSAGEIPLPKLYISMAFFFLSGTIW
 IHILRKRNRDVFVHILMAALPFTKSLSLVFHAIDYHYISSQGFPIEGWAVVYIITHLLKGALLFITIAL
 IGTGWAFIKHILSDKDKKIFMIVIPLQVLANVAYIIESTEEGTTEYGLWKDSLFLVDLLCCGAILFPVV
 WSIRHLQEASATDGGKDSMGPLQQRANLRAGSRIAAINLAKLKLFRHYVLIVCYIYFTRIIAFLKLAV
 PFQWKWLYQLLDETATLVFFVLTYKFRPASDNPYLQLSQEEEDLEMESVVTSSGVMESMKKVKVKTNGS
 VEPQGEWEGAV

TRTRPLEQKLISEEDLAANDILDYKDDDDKV

Chromatograms:

https://cdn.origene.com/chromatograms/mk8067_h02.zip

Restriction Sites:

Sgfl-Mlul

Cloning Scheme:


ACCN: NM_001136558

ORF Size: 1713 bp

OTI Disclaimer: The molecular sequence of this clone aligns with the gene accession number as a point of reference only. However, individual transcript sequences of the same gene can differ through naturally occurring variations (e.g. polymorphisms), each with its own valid existence. This clone is substantially in agreement with the reference, but a complete review of all prevailing variants is recommended prior to use. [More info](#)

OTI Annotation: This clone was engineered to express the complete ORF with an expression tag. Expression varies depending on the nature of the gene.

Components: The ORF clone is ion-exchange column purified and shipped in a 2D barcoded Matrix tube containing 10ug of transfection-ready, dried plasmid DNA (reconstitute with 100 ul of water).

- Reconstitution Method:**
1. Centrifuge at 5,000xg for 5min.
 2. Carefully open the tube and add 100ul of sterile water to dissolve the DNA.
 3. Close the tube and incubate for 10 minutes at room temperature.
 4. Briefly vortex the tube and then do a quick spin (less than 5000xg) to concentrate the liquid at the bottom.
 5. Store the suspended plasmid at -20°C. The DNA is stable for at least one year from date of shipping when stored at -20°C.

RefSeq: [NM_001136558.1](#), [NP_001130030.1](#)

RefSeq ORF: 1716 bp

Locus ID: 57720

UniProt ID: [Q5VW38](#)

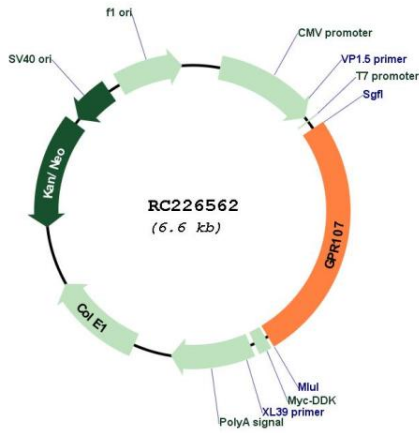
Cytogenetics: 9q34.11

Protein Families: Druggable Genome, Transmembrane

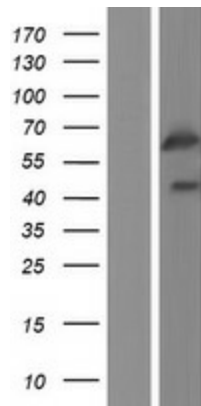
MW: 63.8 kDa

Gene Summary: Has been proposed to act as a receptor for neuronostatin, a peptide derived from the somatostatin/SST precursor (PubMed:22933024). Involved in blood sugar regulation through the induction of glucagon in response to low glucose (By similarity).[UniProtKB/Swiss-Prot Function]

Product images:



Circular map for RC226562



Western blot validation of overexpression lysate (Cat# [LY427922]) using anti-DDK antibody (Cat# [TA50011-100]). Left: Cell lysates from untransfected HEK293T cells; Right: Cell lysates from HEK293T cells transfected with RC226562 using transfection reagent MegaTran 2.0 (Cat# [TT210002]).