

Product datasheet for **RC226554**

SGK1 (NM_001143676) Human Tagged ORF Clone

Product data:

Product Type:	Expression Plasmids
Product Name:	SGK1 (NM_001143676) Human Tagged ORF Clone
Tag:	Myc-DDK
Symbol:	SGK1
Synonyms:	SGK
Mammalian Cell Selection:	Neomycin
Vector:	pCMV6-Entry (PS100001)
E. coli Selection:	Kanamycin (25 ug/mL)



[View online »](#)

ORF Nucleotide Sequence:

>RC226554 representing NM_001143676
 Red=Cloning site Blue=ORF Green=Tags(s)

TTTTGTAATACGACTCACTATAGGGCGGCCGGAATTCGTCGACTGGATCCGGTACCGAGGAGATCTGCC
 GCC**CGCATCGCC**

ATGGTAAACAAAGACATGAATGGATTCCCAGTCAAGAAATGCTCAGCCTTCCAATTTTTAAGAAGCGGG
 TACGAAGGTGGATCAAGAGCCCAATGGTCAGTGTGGACAAGCATCAGAGTCCCAGCTGAAGTACACCGG
 CTCCTCCATGGTGCACATCCCTCCAGGGAGCCAGACTTCGAGTCTTCTTGTGTCAAACATGCCTGGGT
 GAACATGCTTTCCAAAGAGGGTTCTCCCTCAGGAGAACGAGTCACTGTTTCATGGGAACTCAATCTGGGT
 GTGAAGTGAAGAGCCATGTAATCATGCCAACATCCTGACCAAGCCGATCCAAGAACCCTTCTGGACTAA
 TGATGATCCAGCTTTCATGAAGCAGAGGAGGATGGGTCTGAACGACTTTATTGAGAAGATTGCCAATAAC
 TCCTATGCATGCAAACACCCTGAAGTTCAGTCCATCTTGAAGATCTCCAACTCAGGAGCCTGAGCTTA
 TGATGCCAACCTTCTCCTCCACCAAGTCTTCTCAGCAAATCAACCTTGGCCCGTCGTCGAATCTCTCA
 TGCTAAACCATCTGACTTTCACTTCTTGAAGTATCGGAAAGGGCAGTTTTGAAAGGTTCTTCTAGCA
 AGACACAAGGCAGAAGAAGTGTCTATGCAGTCAAAGTTTTACAGAAGAAAGCAATCCTGAAAAAGAAAG
 AGGAGAAGCATATTATGTCGGAGCGGAATGTTCTGTTGAAGAATGTAAGCACCTTTTCTGGTGGGCT
 TCATTCTCTTCCAGACTGCTGACAAATTGACTTTGCTCCTAGACTACATTAATGGTGGAGAGTTGTTT
 TACCATCTCCAGAGGGAACGCTGCTTCTGGAACCACGGGCTCGTTTCTATGCTGCTGAAATAGCCAGTG
 CCTTGGGTACCTGCATTCACTGAACATCGTTTATAGAGACTTAAACCAGAGAATTTTTGCTAGATTC
 ACAGGGACACATTGTCTTACTGACTTCGGACTCTGCAAGGAGAACATTGAACACAACAGCACAACTCC
 ACCTTCTGTGGCAGCCGGAGTATCTCGCACCTGAGGTGCTTATAAGCAGCCTTATGACAGGACTGTGG
 ACTGGTGGTGCCTGGGAGCTGTCTGTATGAGATGCTGTATGGCCTGCCGCTTTTTATAGCCGAAACAC
 AGCTGAAATGTACGACAACATTCTGAACAAGCCTCTCCAGCTGAAACCAATATTACAAATCCGCAAGA
 CACCTCCTGGAGGGCTCCTGCAGAAGGACAGGACAAAGCGGCTCGGGGCAAGGATGACTTCATGGAGA
 TTAAGAGTCATGTCTTCTCCTTAATTAAGTGGGATGATCTCATTAAAGAAGATTACTCCCTTTT
 TAACCAAATGTGAGTGGGCCAACGACCTACGGCACTTTGACCCGAGTTTACCGAAGAGCCTGTCCCC
 AACTCCATTGGCAAGTCCCCTGACAGCGTCTCGTCACAGCCAGCGTCAAGGAAGCTGCCGAGGCTTTCC
 TAGGCTTTTCTATGCGCTCCACGGACTCTTCTCTC

ACGCGTACGCGGCCGCTCGAGCAGAACTCATCTCAGAAGAGGATCTGGCAGCAAATGATATCCTGGATT
 ACAAGGATGACGACGATAAGGTTTAA

Protein Sequence:

>RC226554 representing NM_001143676
 Red=Cloning site Green=Tags(s)

MVNKDMNGFPVKKCSAFQFFKKRVRRIKSPMVSVDKHQSPSLKYTGSSMVHIPPGEPDFESSLCQTCLG
 EHAFQRGVLPEENESCSWETQSGCEVREPCNHANILTKPDPRTFTWDDPAFMKQRRMGLNDFIQKIANN
 SYACKHPEVQSILKISQPEPELMNANPSPPPSPSQINLGPSSNPHAKPSDFHFLKVIKGSFGKVL
 RHKAEEVFYAVKVLQKKAILKKKEEKHIMSERNVLLKNVKHPFLVGLHFSFQTADKLYFVLDYINGGELF
 YHLQRERCFLEPRARFYAAEIASALGYLHSLNIVYRDLKPENILLDSQGHIVLTDGLCKENIEHNSTTS
 TFCGTPPEYLAPEVLHKQPYDRTVDWWCLGAVLYEMLYGLPPFYSRNTAEMYDNILNKPLQLKPNITNSAR
 HLLLEGLLQKDRKRLGAKDDFMEIKSHVFFSLINWDDLINKKITPPFNPVSGPNDRHFDPEFTEEPVP
 NSIGKSPDSVLVTASVKEAAEFLGFSYAPPTDSFL

TRTRPLEQKLISEEDLAANDILDYKDDDDKV

Chromatograms:

https://cdn.origene.com/chromatograms/mk8065_e09.zip

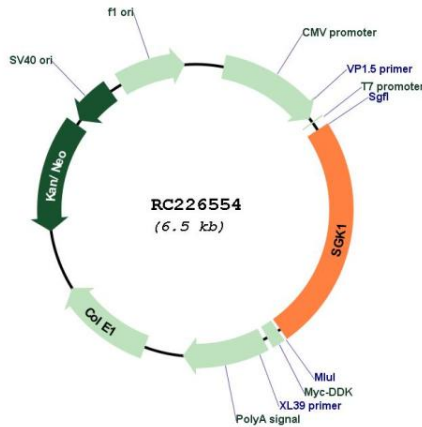
Restriction Sites:

Sgfl-MluI

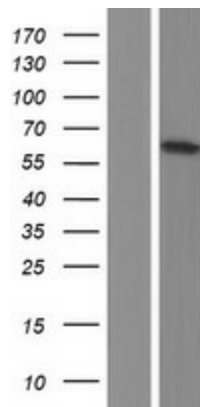
MW: 59.7 kDa

Gene Summary: This gene encodes a serine/threonine protein kinase that plays an important role in cellular stress response. This kinase activates certain potassium, sodium, and chloride channels, suggesting an involvement in the regulation of processes such as cell survival, neuronal excitability, and renal sodium excretion. High levels of expression of this gene may contribute to conditions such as hypertension and diabetic nephropathy. Several alternatively spliced transcript variants encoding different isoforms have been noted for this gene. [provided by RefSeq, Jan 2009]

Product images:



Circular map for RC226554



Western blot validation of overexpression lysate (Cat# [LY428312]) using anti-DDK antibody (Cat# [TA50011-100]). Left: Cell lysates from untransfected HEK293T cells; Right: Cell lysates from HEK293T cells transfected with RC226554 using transfection reagent MegaTran 2.0 (Cat# [TT210002]).