

## Product datasheet for RC226514

### TMEM132C (NM\_001136103) Human Tagged ORF Clone

#### Product data:

Product Type:	Expression Plasmids
Product Name:	TMEM132C (NM_001136103) Human Tagged ORF Clone
Tag:	Myc-DDK
Symbol:	TMEM132C
Synonyms:	PPP1R152
Mammalian Cell Selection:	Neomycin
Vector:	pCMV6-Entry (PS100001)
E. coli Selection:	Kanamycin (25 ug/mL)
ORF Nucleotide Sequence:	>RC226514 representing NM_001136103 Red=Cloning site Blue=ORF Green=Tags(s)

TTTTGTAATACGACTCACTATAGGGCGCCGGGAATTCGTCGACTGGATCCGGTACCGAGGAGATCTGCC  
GCC**CGATCGCC**

ATGTTGACTTCAAACCTTTTATAGGTCCAACCAATAAGTTTATGTTTATTGATTGGAACTAAAAGCCCACATCC  
TGCGGGACAAAGTCTACCTGAGCCGGCCAAAGTGCAGGTTCTTTCCACATCATGGGCAGAGACTGGGA  
TGACCACGGCGCCGGGAGAAGCTGCCATGCCTGAGGGTCTTTGCTTTCCGAGAAACCAGAGAGGTGCGG  
GGCAGCTGCCGGCTGAAGGGGACCTGGGGCTGTGTGGCTGAGCTGGAGCTCCTGTCCAGCTGGTTCA  
GTGCCCCGACGGTGGGTGCCGGGAGGAAGAAGTCCATGGACCAGCCGGAGGGGACCCCTGTGGAGCTCTA  
CTACACCGTGCACCCAGGAAACGAGCGAGGGGACTGTGCCGGGGTGACTTCAGGAAGGGCAACGCCATC  
CGTCCAGGAAAGGATGGGCTGGAGGAAACCACGTCCCACCTGCAGAGGATCGGCACCGTCCGGCTTTACC  
GGGCCAGGACAGCGCCAGCTCAGCGAGCTGCGTTTGGATGGTAACGTGGTCACTGGCTGCCTCCAG  
GCCAGTCAAGCAGGAGAGGTGGTACGGCCTATGTCACCATCTCGAGCAATTCCTGTGGACCTTTC  
ATCTTGAGAGCCAAGGTGAAGAAGGGGTGAACATCCTGAGTGCTCAGACCCGTGAGCCCCGGCAGTGGG  
GCGTCAAGCAGGAGGTGGCAGCGCGGAAAGCACGTGACGGCCACCGTGGCCTGCCAGCGCCTGGGGCC  
CAGCCCACGCAACAGGAGCAGCAGTTTATTCAATGAGGTTGTGCAGATGAACTTTGAAATAGCCAGTTTC  
AGCAGCCTTTCAGGGACTCAGCCATCAGTGGCAGGTGGAGTACCCAGGAAGGGGACCCACAGACATCG  
CCGTGTCCGAGATCTTTGTGACCCAGAAGGACCTGGTGGGATCGTTCCTTGGCTATGGACACTGAAAT  
TCTGAACACCGCCGTACTCACAGGAAAGACAGTTGCCATGCCTATCAAGTGGTCTCTGTGGAGGAGAAC  
AGTGCCGTGATGGACATCTCAGAGTGGTGGAGTGAAGTCCACAGACGAGGACGTTATCAAAGTGTCTG  
AGCGCTGTGACTACATCTTTGTCAATGGCAAAGAGATCAAAGGAAAGATGGATGCGGTGGTGAACCTCAC  
ATACCAGTACCTGAGCGCCCCCTGTGTGTACCGTGTGGGTGCCCGGCTGCCCTGCAGATCGAGGTC  
TCTGACACGGAGCTCAGCCAGATAAAGGGCTGGAGGGTCCCCATTGTGACCAATAAGAGGCCCACTCGT  
AGAGCGAGGATGAGGACGAGGAGGAGCGCGGGGGCGGGGCTGCGCACTGCAATACCAGCAGCCACCGT  
GCGGGTCTCACCCAGTTTGTGCTGAGGGCGCCGGTCCATGGGGCCAGCCGAACACTGCTTAGTCTCT



[View online »](#)

```

AACTGGCAGTTCGACATCACTCACCTGGTGGCAGACTTCATGAAGCTGGAGGAACCTCACGTGGCCACCC
TCCAGGACAGCCGGGTCCTGGTTGGCGGAGAGGTTGGGATGACGACCATCCAGGTGTTGTCTCCACTGTC
TGACTCCATCCTGGCAGAGAAGACAATAACCGTGTAGATGACAAAGTATCGGTGACAGACTTGGCCATC
CAGCTCGTGGCTGGGCTGTCTGTGCGCCCTTACCCCAACGCAGAAAACAGCAAGGCCGTAAACAGCTGTGG
TCACAGCTGAGGAGGTGCTGCGGACCCCAACAGGAGGCTGTATTCAGCACGTGGCTGCAGTTCAGTGA
TGGCTCTGTGACGCCCCGGACATCTACGACACCAAGGACTTCCCTGGCAGCCACCTCCAGGACGAG
GCTGTCTGTGACGCCCCAGCCCGCTCTCCAGGTGGCCCGTGTGGTGGCCGAAGGGGAAGGCCAGG
GCCACGTGATCCGAGTGGACATGACGATCGCCGAGGCCTGCCAGAAATCTAAACGCAAGAGCATCCTGGC
TGTGGCGCTCGGCAACGTCAAGGTCAGGTTTCGGACAGAACGATGCTGACTCCAGCCCCGGCGGGACTAT
GAGGAAGATGAGATCAAGAACCACGCCAGCACCGCCGCGAGAAGGGCCAGCACCATGAGCGCACAGGCC
AAGATGGGCACCTCTATGGCAGCTCTCCCGTGGAGCGTGAGGAAGGGGCTCTCCGAAGAGCCACTACCAC
GGCCAGGTCCTGCTGGACAACAAAGTGGTGAAGAACAGTCGGGCAGACGGGGCAGGCTGGCAGGAGAG
GGGCAGCTGCAGAACATCCCATTTGACTTCACCAACTCCCTGCCACGTGGACCTCCCCAAGCCGGGA
GTGGGCTGGAGGAAAACGACCTGGTGCAGACTCCGCGGGGCTGAGTGATCTGGAGATAGGGATGTACGC
CCTCCTGGGGTGTCTGCCTGGCCATCCTCGTCTTCTGATCAACTGCGCCACCTTTGCCCTGAAGTAC
AGGCACAAGCAAGTGCCCTGGAAGGTCAGGCCTCCATGACCCACTCTCACGACTGGGTGTGGCTTGGCA
ATGAGGCCGAACCTCTGGAGAGCATGGGGATGCGCCGCCGCCAGGACGAGCACACCACCATCATAGA
CCGCGGACCGGGGCTGCGAGGAGAGCAACCATCTCCTGCTCAATGGTGGCTCCCAAGCACGTGCAG
AGCCAGATTCACAGGTACGCCGACTCCGGGGGCGGCAGGGCAGAGAACAGAAGCAGGACCCCTGCACT
CGCCACCTCCAAGAGGAAGAAGGTGAAATTTACCACCTTTACCACCATCCCCCGGACGACAGCTGCC
CACGGTGAACCTCATCGTCAGCAGCAATGATGAGGACATCAAATGGGTGTGTCAAGACGTGGCTGTGGGT
GCCCCAAGGAACCTAGAAACTATCTGGAGAACTCAAAGATAAGGCT

```

```

ACGCGTACGCGGCGCTCGAGCAGAACTCATCTCAGAAGAGGATCTGGCAGCAAATGATATCCTGGATT
ACAAGGATGACGACGATAAGGTTTAA

```

**Protein Sequence:**

>RC226514 representing NM\_001136103  
 Red=Cloning site Green=Tags(s)

```

MLTSNFLGPTNKF SFDWKLKAHILRDKVYLSRPKQVQLFHIMGRDWDH GAGEKLPCLR VFAFRETR EVR
GSCRLKGLDGLCVAELELLSSWFSAPT VGAGRKKSMDQPEGTPVELYYTVHPGNERGDCAGD FRKGNAI
RPGKDGLEETTSHLQRIGTVGLYRAQDSAQLSELRLDGNVVIWLP SRPVKQGEVVTAYVTI SSNSSVDLF
ILRAKVKKGVNILSAQTRERQWGVKQEVGSGGKHVTATVACQRLGPSRNRSSSLFNEVVQMNFEIASF
SSLSGTQPITWQVEYPRKGTDDIAVSEIFVSQKDLVGI VPLAMDTEILNTAVL TGKTVAMP IKVVSVEEN
SAVMDISESVECKSTDEDVIKVSERC DYIFVNGKEIKGKMDAVVNFTYQYLSAPLCVTVWV PRLPLQIEV
SDTELSQIKGWRVPIVTNKRPTRESEDEEERRGRGCALQYQHATVRVLTQFVSEGAGPWGQPNYLLSP
NWQFDITHLVADFMKLEEPHVATLQDSRVLV GREVGMTTIQVLSPLSDSILA EKITVLDKVSVDLAI
QLVAGLSVALYPNAENSKAVTAVVTAEEVLRTPKQEA VFWLQFSDGSVTPLDIYDTKDFSLAATSQDE
AVVSVPPRSPRPVVAE GEGQPLIRVDMTIAEACQKSKRKSILAVGVGNVRVKFQNDADSSPGGDY
EEDEIKNHASDRRQKGQHHERTQGDGHL YGSSPVEREEGALRRATTTARSLLDNKVVKN SRADGGRLAGE
GQLQNIPIDFTNFP AHVDLPKAGSGLEENDLVQTPRGLSDLEIGMYALLGVFCLA ILVFLINCATFALKY
RHKQVPLEGQASMT HSHDWVWL GNEAELESMGDAPPPQDEHTT IIDRGP GACEESNHLL LGGSHKHVQ
SQIHRSADSGRQGREQKDPLHSPTSKRKKVKFTTFTTIPPDDSCPTVNSIVSSNDEDIK WVCQDVAVG
APKELRNYLEKLDKA

```

```

TRTRPLEQKLI SEEDLAANDILDYKDDDDKV

```

**Restriction Sites:**

Sgfl-MluI

**Cloning Scheme:**


**ACCN:** NM\_001136103

**ORF Size:** 2988 bp

**OTI Disclaimer:** The molecular sequence of this clone aligns with the gene accession number as a point of reference only. However, individual transcript sequences of the same gene can differ through naturally occurring variations (e.g. polymorphisms), each with its own valid existence. This clone is substantially in agreement with the reference, but a complete review of all prevailing variants is recommended prior to use. [More info](#)

**OTI Annotation:** This clone was engineered to express the complete ORF with an expression tag. Expression varies depending on the nature of the gene.

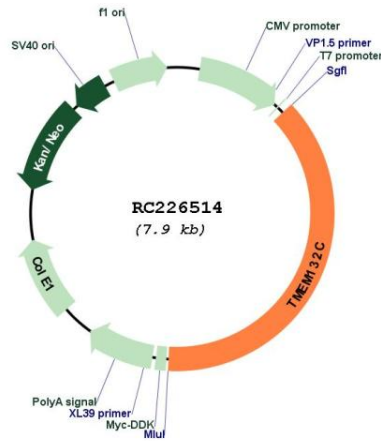
**Components:** The ORF clone is ion-exchange column purified and shipped in a 2D barcoded Matrix tube containing 10ug of transfection-ready, dried plasmid DNA (reconstitute with 100 ul of water).

- Reconstitution Method:**
1. Centrifuge at 5,000xg for 5min.
  2. Carefully open the tube and add 100ul of sterile water to dissolve the DNA.
  3. Close the tube and incubate for 10 minutes at room temperature.
  4. Briefly vortex the tube and then do a quick spin (less than 5000xg) to concentrate the liquid at the bottom.
  5. Store the suspended plasmid at -20°C. The DNA is stable for at least one year from date of shipping when stored at -20°C.

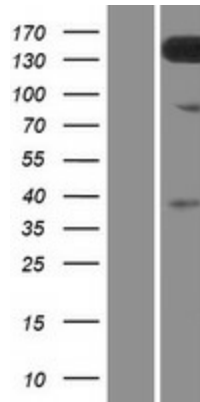
**RefSeq:** [NM\\_001136103.1](#), [NP\\_001129575.1](#)

**RefSeq ORF:** 3327 bp

**Locus ID:** 92293  
**UniProt ID:** [Q8N3T6](#)  
**Cytogenetics:** 12q24.32-q24.33  
**Protein Families:** Transmembrane  
**MW:** 109.65 kDa

**Product images:**


Circular map for RC226514



Western blot validation of overexpression lysate (Cat# [LY427798]) using anti-DDK antibody (Cat# [TA50011-100]). Left: Cell lysates from untransfected HEK293T cells; Right: Cell lysates from HEK293T cells transfected with RC226514 using transfection reagent MegaTran 2.0 (Cat# [TT210002]).