

Product datasheet for RC226513

PCDH15 (NM_001142763) Human Tagged ORF Clone

Product data:

Product Type:	Expression Plasmids
Product Name:	PCDH15 (NM_001142763) Human Tagged ORF Clone
Tag:	Myc-DDK
Symbol:	PCDH15
Synonyms:	CDHR15; DFNB23; USH1F
Mammalian Cell Selection:	Neomycin
Vector:	pCMV6-Entry (PS100001)
E. coli Selection:	Kanamycin (25 ug/mL)
ORF Nucleotide Sequence:	>RC226513 representing NM_001142763 Red=Cloning site Blue=ORF Green=Tags(s)

TTTTGTAATACGACTCACTATAGGGCGGCCGGAATTCGTCGACTGGATCCGGTACCGAGGAGATCTGCC
GCC**CGATCGCC**

ATGTTTCGACAGTTTTATCTCTGGACATGTTTAGCTTCAGGGATCATCCTGGGCTCTCTTTGAAATCT
GCTTGGGCCAGTATGATGATGACTGGCAATATGAGGATTGCAAACAGCTAGGGGAGGACCACCAGCTAC
CATAGTTGCTATTGATGAAGAAAGTCGGAATGGTACAATTCTGGTGGACAACATGCTGATCAAAGGGACT
GCTGGAGGACCAGACCCACCATAGAATTTCTTTAAAGGATAATGTGGATTACTGGGTGTTGATGGATC
CTGTTAAGCAAATGCTTTTCCTGAACAGCACCGGAAGAGTTCTGGATAGAGATCCACCGATGAACATACA
CTCCATTGTGGTGCAGGTCCAGTGCATCAACAAAAAGTGGGCACTATTATCTACCATGAAGTGCGAATA
GTGGTGAGAGACAGGAATGACAACCTCACCCACTTTCAAGCATGAAAGCTACTATGCCACAGTGAATGAGC
TCACTCCAGTTGGTACCACAATATTCACAGGATTTTCAGGAGACAATGGAGCTACAGATATAGATGATGG
ACCAAAATGGACAGATAGAGTATGTTATTCAGTATAATCCAGATGATCCGACATCCAATGACACCTTTGAA
ATTCCTTAATGTTGACTGGAAATATAGTGTTAAGGAAGAGGCTCAACTATGAAGATAAGACTCGCTACT
TTGTCAATAATCCAAGCTAATGACCGTGCCAAAAATCTGAATGAGAGGCGAACCACCACCACCTCTCAC
AGTGGATGTTCTGGATGGAGATGACTTGGGTCCAATGTTTCTTCTTGTCTCTGTGCCAACACTCGT
GATTGCCGTCCACTCACTTATCAAGCTGCCATACCTGAGTTGAGAATCCGGAAGAAGTGAACCCCATTA
TTGTTACGCCACCAATCCAAGCCATTGATCAGGACCGGAATATCAACCGCCATCAGATAGGCCAGGAAT
CCTCTATTCCATCCTTGTGGGACTCCTGAGGATTACCCACGATTTTCCATATGCATCCTAGGACAGCA
GAACTTAGTCTCCTGGAGCCAGTAAACAGAGACTTTCACCAGAAATTTGATTTGGTTATTAAGGCTGAAC
AAGACAATGGTCATCCTCTTCTGCCTTTGCCGGTCTACACATTGAAATACTGGATGAAAACAATCAAAG
TCCATATTTTACAATGCCAGTTATCAAGGCTATATCCTGGAATCTGCCCACTGGGAGCAACCATTTTCG
GACAGTCTCAATTTGACTTCACCTTTAAGAATAGTAGCTCTGGACAAGGACATAGAAGATACAAAAGACC
CAGAGCTTCACTTTTCTGAATGACTACACCTCAGTCTTACCCTCACACAGACTGGTATTACTCGCTA
CCTCACCTTACTCAACAGTGGACAGGGAAGAAGCAAACTTACACCTTTTCGATAACAGCATTTGAT



[View online >](#)

GGTGTAACAAGAAAGTGAGCCAGTCATCGTCAATATTCAAGTGATGGATGCAAATGATAACACGCCAACCT
 TCCCTGAAATATCCTATGATGTGTATGTTTATACAGACATGAGACCTGGGGACAGTGTACATACAGCTCAC
 TGCAGTCGACGCAGACGAAGGGTCAAAATGGGGAGATCACATATGAAATCCTTGTTGGGGCTCAGGGAGAC
 TTCATCATCAATAAAAACAACAGGGCTTATCACCATCGTCCAGGGGTGAAATGATAGTCGGGCGGACTT
 ACGCACTACGGTCCAAGCAGCGGATAATGCTCCTCCTGCAGAGCGAAGGAACTCCATCTGCACTGTGTA
 TATTGAAGTGCTCCACCAATAATCAAAGCCCTCCTCGCTTCCCACAGCTGATGATAGCCTTGAATTA
 AGTGAAGCCATGAGGGTTGGTGTGTTTTATTAATCTACAGGCAACTGATCGAGAGGGAGACTCAATAA
 CATATGCCATTGAGAATGGAGATCCTCAGAGAGTTTTTAATCTTTCAGAAACCACGGGGATTCTAACCTT
 AGGGAAAGCACTGGACAGGGAAAGCACTGATCGTACATTCTGATCATCACAGCTTCAGATGGCAGGCCA
 GATGGGACCTCAACTGCCACAGTAAACATAGTGGTGACAGATGTCAATGACAATGCTCCAGTGTTTGATC
 CTTATCTGCCAAGAAATTTATCTGTGGTGAAGAAGAAGCCAATGCCTTTGTGGGTCAAGTAAAAGCAAC
 AGACCCTGATGCTGGAATAAATGGTCAAGTGCCTACAGTTTGGGTAACTTAATAATCTTTTTCGTATC
 ACATCCAATGGGAGCATTACACAGCAGTGAAGCTTAAACAGAGAAGTCAGGGACTACTATGAACTGTTG
 TTGTGGCAACAGATGGAGCAGTACACCCTCGTCATTCAACTCTAACCTTGGCCATCAAGTTTTGGACAT
 TGATGATAACAGTCTGTGTTCCCAATCAACATACACTGTCTTGTGAAGAGAAATTTGCCAGCTGGG
 ACTACCATCCTTCAAATAGAGGCCAAAGATGTCGACCTTGGAGCAAAATGTGTCTTACCGGATAAGAAGCC
 CAGAAGTGAAGCACTTTTTTGCCTACATCCATTTACAGGAGAATATCGCTTTAAGGAGTTTAGATTA
 TGAGGCATTTCCAGACCAAGAAGCAAGTATCACTTTTCTGGTAGAGGCCCTTGTATTTATGGAACAATG
 CCACCTGGTATTGCTACTGTACAGTGATTGTAAGGATATGAATGATTATCCTCCTGTCTTTAGTAAAC
 GAATATACAAAGGGATGGTGGCTCCGGATGCAGTCAAGGGTACACCTATCACAACAGTTTATGCTGAAGA
 TGCAGACCCTCCTGGATTACCTGCAAGTCGTGTGAGGTATAGAGTAGATGTACAGTTTCTTACCCT
 GCCAGTATTTTTGAAGTGAAGAAGATTCTGGAAGAGTAATAACACGAGTCAATCTAATGAAGAACCTA
 CAACAATTTTTAAGTTGGTGGTGGTGTGTTTTGATGATGGGAGCCTGTGATGCCAGTCCACAGT
 GAAGATTCTGTCTTACATCCTGGTGGATCCACGCTTACACAGGAGGAATATAGACCTCCTCCAGTA
 AGTGAAGTGGCCACAAAGGGACCATGGTGGTGAATTTCTGCTGCTGCCATTAAATCAAAGTATTGTGT
 ACTCCATTGTTTCAGGAAATGAAGAAGATACATTTGGAATTAATAACATCACAGGTGTTATCTATGTGAA
 TGGACCTCTGGATTATGAGACCAGGACAAGCTATGTACTCGAGTCCAAGCTGATTCCTGGAAAGTGGTC
 CTTGCCAATCTCCGAGTTCCTTCAAAAAGCAATACAGCTAAAGTATACATTTGAGATTGAGGATGAAAATA
 ATCATCCCCAGTGTTCAGAAAAAATTTACATCGGAGGTGATCTGAAGATGCAAGAATGTTTACTTTC
 TGTACTCAGAGTGAAGGCTACTGATAAAGATACTGGCAATATAGTGTGTCATGGCCTACAGACTCATAATA
 CCACCAATTAAGAGGGGAAAAGAAGGATTTGTAGTGGAAACATATACAGGGCTTATCAAACTGCTATGC
 TCTTCCATAATATGAGGAGATCCTACTTCAAGTTTCAAGTATTGCAACTGACGACTATGGGAAGGGACT
 GAGCGGCAAGGCCGATGTACTCGTCTCCGTGGTCAATCAGCTGGATATGCAAGTCATTGTTTCCAATGTG
 CCTCCTACTCTAGTGGAAAAAAGATAGAAGATCTTACAGAGATCTTGGATCGCTATGTTTCAGGAACAAA
 TTCTGGTGGCAAGGTCGTAGTGGAGTCCATTGGAGCTCGCCGGCATGGAGATGCCTTTTCCCTAGAAGA
 TTACACCAAAATGTGACTTGACTGTCTATGCAATTGACCCCAACCAACAGGCCATCGATAGAAATGAG
 CTTTTTAAATTTTTGGATGGCAACTACTTGATATCAATAAAGACTTTTCCAGCCGATTATGGGGAAGGAG
 GACGCATTCTGGAGATCCGGACTCCAGAGGCAGTGACCAGCATTAAAAAGAGAGGAGAAAAGTCTAGGATA
 CACAGAAGGGGCTTGTGGCTCTGGCCTCATCATCCTCTGCTGCATTCTGCCATCTTGGTGGTT
 TTGGTCAGCTACAGACAGTTTTAAAGTACGTCAAGCTGAGTGTACAAAGACTGCACGAATTCAGCCGCAT
 TACCCGCGGCTAAACCAGCAGTCCGGCTCCTGCACCAGTGGCAGCGCCCCGCCGCCGCGCCCTCC
 GCCAGGTGCGCATCTCTATGAAGAACTTGAGACAGCTCAATGCATAATCTTTTCTTCTTACCATTTT
 CAACAAAGCAGGGGAAATAACTCAGTCTCAGAAGACAGGAAACATCAACAAGTTGTGATGCCCTTTTCTT
 CCAATACTATTGAGGCTCACAAGTCAGCTCATGTAGACGGATCACTTAAGAGCAACAACTGAAGTCTGC
 AAGAAAATTCACATTTCTATCTGATGAGGATGACTTAAGTGGCCATAATCCCCTTTATAAGGAAAACATA
 AGTCAAGTATCAACAAATTCAGACATTTACAGAGAACAGATTTTGTAGACCCATTTTACCACAAAATAC
 AAGCCAAGAGTAAGTCTCTGAGGGGCCAAGAGAAAAGATTGAGAGGCTGTGGAGTCAGTCAGTCAGCTT
 ACCCAGGAGGCTGATGAGGAAAGTTCCAAATAGACCAGAGATCATAGATCTGCAGCAGTGCAAGGCACC
 AGGCAGAAAGCTGAAAATGAAAACACTGGAATCTGTACAAAACAAAAGAGGTAGCAGCAATCCATTGCTTA
 CAACTGAAGAGGCAAAATTTGACAGAGAAAAGAGGAAATAAGGCAAGGTGAAACACTGATGATAGAAGGAAC
 AGAACAGTTGAAATCTCTCTCTTCCAGACTCTTCAATTTTGTCTTCCAGGCCTCACTTCTCATTCTCCACT
 TTGCCAACTGTTCAAGAACTGTGGAACCAATCAGAACCTAATGTCATCAGTTCTCCTGCTGAGTGT

CCTTGGAACTTTCTCCTCAAGGCCTTGTGTTTTACATTCTTCACTCTCTAGGAGAGAGACACCTATTTG
TATGTTACCTATTGAAACCGAAAGAAATATTTTTGAAAATTTGCCCATCCACCAAAACATCTCTCCTTCT
GCCTGTCCCTTCCCCTCCTCCTCCTATTTCTCCTCCTCTCCTCCTGCTCCTGCTCCTCTTGCTC
CTCCTCCTGACATTTCTCCTTTTTCTTTTTGTCTCCTCCTCCTCCTCCTCCTTATCCCTCTTCTCT
TCCTCCTCCTACATTTTTCCACTTCCGTTTCAACGTCTGGTCCCCAACACCACCTCTTCTACCTCCA
TTTCCAACCTCCTTCTCCACCACCTCCTTCTATTCTTGCCTCCACCTCCTTCAGCTCATTCTCTGT
CCACAGAGTGTCTGTATAACAGGTGTTAAATGCACGACCAACTTGATGCCTGCCGAGAAAAATTAAGTC
CTCTATGACACAGCTATCAACAACGACAGTGTGTAACACAGACCCTCAGAGAGAACCAAAAGGCATCCTC
AGACACGTTAAAACTTAGCAGAACTTAAAAATCAGTAGCTAACATGTACAGTCAAATAGAAAAAACT
ATCTACGCACAAAATGTTTCAGAACTTCAAATATGTGCCCTTCAAGAGTAAACAAATATGAAATCACATC
TGAACAAAACAAGGGGAGTTTGAACAATATTGTCGAGGGAACGAAAAACAATCTCACAGTCAATCTACT
TCACTG

ACGCGTACGCGGCCGCTCGAGCAGAACTCATCTCAGAAGAGGATCTGGCAGCAATGATATCCTGGATT
ACAAGGATGACGACGATAAGGTTTAA

Protein Sequence:

>RC226513 representing NM_001142763
Red=Cloning site Green=Tags(s)

MFRQFYLWTLASGIILGSLFEICLGQYDDWQYEDCKLARGPPATIVAIDEESRNGTILVDNMLIKGT
AGGPDPTIELSLKDNVDYVWLMDPVKQMLFLNSTGRVLRDPPMNIHSIVVQVQCINKKVGTTIYHEVRI
VVRDRNDNSPTFKHESYATVNELTPVGTTFITGFGSDNGATDIDDGPNQIEYVIQYNPDPTSNDTFE
IPLMLTGNIVLRKRLNYEDKTRYFVIIQANDRAQNLNERRTTTTLTVDVLDGDDLGPMLPCVLPNTR
DCRPLTYQAAIPELRTPEELNPIIVTPPIQAIDQRNIQPPSDRPGILYSILVGTPEYPRFFHMHPRTA
ELSLLEPVNRDFHQKFDLVIKAEQDNHGLPAFAGLHIEILDENNQSPYFTMPSYQGYILESAPVGATIS
DSLNLTSPLRIVALDKDIEDTKDPELHLFLNDYTSVFTVTQTGITRYLTLLQPVDRREEQTYTFSITAFD
GVQESEPVIVNIQVMDANDNTPTFPEISYDVVYVYDMRPGDSVIQLTAVDADEGSNGEITYEILVGAQGD
FIINKTTGLITIAPGVEMIVGRYALTVQAADNAPPAERRNSICTVYIEVLPNNQSPRFPQLMYSL
SEAMRVGAVLLNLQATDREGDSITYAIENGDPQRFVNLSETTGILTLGKALDRESDRYLIIITASDGRP
DGTSTATVNIIVTDVNDNAPVDFPYPRLNLSVVEEANAFAVGVKATDPDAGINGQVHYSLGNFNLFR
TNSGSIYTAVKLNREVRDYELVVVATDGAHVHRHSTLTLAIKVLIDDDNSPVFTNSTYTVLVEENLPA
TTILQIEAKDVLDGANVSYRIRSPVEKHFALHPFTGELSLRLSDYEAFFDQEAASITFLVEAFDIYGT
PPGIATVTVIVKDMNDYPPVFSKRIYKGMVAPDAVKGTPITTVYAEDADPPGLPASRVRYRVDVQFPYP
ASIFEVEEDSGRIVTRVNLNEEPTTIFKLVVAFDDGEPVMSSTATVKILVLHPGEIPRFTQEEYRPPV
SELATKGMTMGVISAANQSIYVSIYSGNEEDTFGINNITGVIYVNGPLDYETRTSYVLRVQADSLEVV
LANLRVPSKSNKAVYIEIQDENNHPPVFQKKFYIGGVSEARMFTSVLRVKATDKDTGNYSVMAYRLII
PPIKEGKEGFVETYTGLIKTAMLFHNMRRSYFKFQVIATDDYKGLSGKADVLVSVVNLQDMQVIVSNV
PPTLVEKKIEDLTEILDYVQEQIPGAKVVVESIGARRHGDAFSLDYTKCDLTVYAIQDPTNRAIDRNE
LFKFLDGKLLDINKDFQYEGGRILEIRTPEAVTSIKKRGESLGYTEGALLALAFIIILCCIPAILVV
LVSYRQFVVRQAECTKTARIQAALPAKPAVPAPVAAPPPPPPPGHLVEELGSSMHNLFLLYHF
QQSRGNNSVSEDRKHQQVMPFSSNTIEAHKSAHVDGSLKSNKLSARKFTFLSDEDDL SAHNPLYKENI
SQVSTNSDISQRTDFVDFSPKIQAKSKSLRGPREKIQRLWSQVSVLPRRLMRKVPNRPEIIDLQQWGT
RQKAENENTGICTNKRGSNPLLTTEEANLTEKEEIRQGETLMIEGTEQLKSLSSDSSFCFRPHFSFST
LPTVSRVELKSEPNVSISSPAECSLELSPSRPCVLHSSLRRETPICMLPIETERNIFENFAHPPNISPS
ACPLPPPPPI SPPSPPAPAPLAPPPDISPFLFCPPSPPSIPLPLPPPTFFPLSVSTSGPPTPPLLP
FPTPLPPPPSIPCPPPSASFSLSTECVCITGVKCTTNLMPAEKIKSSMTQLSTTTVCKTDPQREP
KHILRHYKNLAELEKSVANMYSQIEKNYLRTNSELQTMCPSEVTNMEITSEQNKGLNNIVEGTEKQSHSQS
TSL

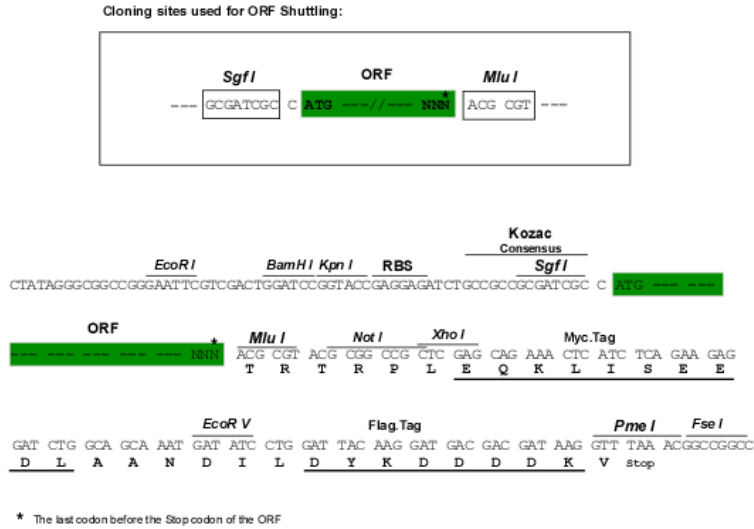
TRTRPLEQKLI SEEDLAANDILDYKDDDDKV

Chromatograms:

https://cdn.origene.com/chromatograms/mk8006_f05.zip

Restriction Sites: SgfI-MluI

Cloning Scheme:



ACCN: NM_001142763

ORF Size: 5886 bp

OTI Disclaimer: The molecular sequence of this clone aligns with the gene accession number as a point of reference only. However, individual transcript sequences of the same gene can differ through naturally occurring variations (e.g. polymorphisms), each with its own valid existence. This clone is substantially in agreement with the reference, but a complete review of all prevailing variants is recommended prior to use. [More info](#)

OTI Annotation: This clone was engineered to express the complete ORF with an expression tag. Expression varies depending on the nature of the gene.

Components: The ORF clone is ion-exchange column purified and shipped in a 2D barcoded Matrix tube containing 10ug of transfection-ready, dried plasmid DNA (reconstitute with 100 ul of water).

- Reconstitution Method:
1. Centrifuge at 5,000xg for 5min.
 2. Carefully open the tube and add 100ul of sterile water to dissolve the DNA.
 3. Close the tube and incubate for 10 minutes at room temperature.
 4. Briefly vortex the tube and then do a quick spin (less than 5000xg) to concentrate the liquid at the bottom.
 5. Store the suspended plasmid at -20°C. The DNA is stable for at least one year from date of shipping when stored at -20°C.

RefSeq: [NM_001142763.2](#)

RefSeq ORF: 5889 bp

Locus ID: 65217

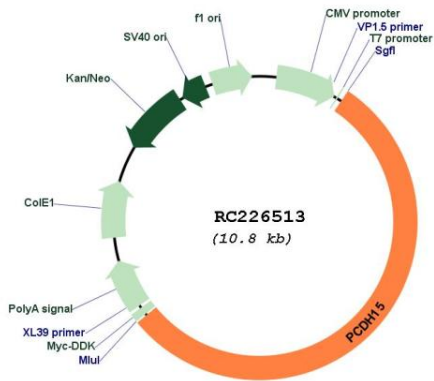
Cytogenetics: 10q21.1

Protein Families: Druggable Genome, Transmembrane

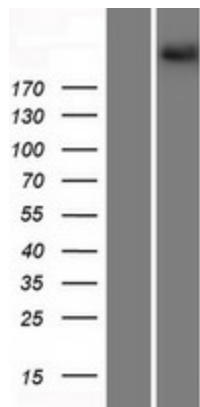
MW: 217.06 kDa

Gene Summary: This gene is a member of the cadherin superfamily. Family members encode integral membrane proteins that mediate calcium-dependent cell-cell adhesion. It plays an essential role in maintenance of normal retinal and cochlear function. Mutations in this gene result in hearing loss and Usher Syndrome Type IF (USH1F). Extensive alternative splicing resulting in multiple isoforms has been observed in the mouse ortholog. Similar alternatively spliced transcripts are inferred to occur in human, and additional variants are likely to occur. [provided by RefSeq, Dec 2008]

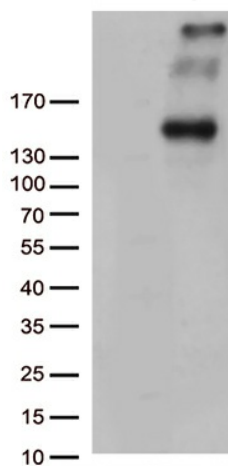
Product images:



Circular map for RC226513



Western blot validation of overexpression lysate (Cat# [LY428262]) using anti-DDK antibody (Cat# [TA50011-100]). Left: Cell lysates from untransfected HEK293T cells; Right: Cell lysates from HEK293T cells transfected with RC226513 using transfection reagent MegaTran 2.0 (Cat# [TT210002]).



HEK293T cells were transfected with the pCMV6-ENTRY control (Cat# [PS100001], Left lane) or pCMV6-ENTRY PCDH15 (Cat# RC226513, Right lane) cDNA for 48 hrs and lysed. Equivalent amounts of cell lysates (5 ug per lane) were separated by SDS-PAGE and immunoblotted with anti-PCDH15 (Cat# [TA812881])(1:500). Positive lysates [LY428262] (100ug) and [LC428262] (20ug) can be purchased separately from OriGene.