

## Product datasheet for **RC226502**

### OGDHL (NM\_001143997) Human Tagged ORF Clone

#### Product data:

Product Type:	Expression Plasmids
Product Name:	OGDHL (NM_001143997) Human Tagged ORF Clone
Tag:	Myc-DDK
Symbol:	OGDHL
Mammalian Cell Selection:	Neomycin
Vector:	pCMV6-Entry (PS100001)
E. coli Selection:	Kanamycin (25 ug/mL)



[View online »](#)

**ORF Nucleotide Sequence:**

>RC226502 representing NM\_001143997  
 Red=Cloning site Blue=ORF Green=Tags(s)

TTTTGTAATACGACTCACTATAGGGCGGCCGGAATTCGTCGACTGGATCCGGTACCGAGGAGATCTGCC  
 GCC**CGGATCGCC**

ATGTTTCATCAACGATGTGGAGCAGTGCCAGTGGATCCGGCAGAAGTTTGTAGACCCTGGTGTGATGCAGT  
 TCTCCAGCGAGGAGAAGCGGACCCTGCTGGCCCGCTAGTGCCTCCATGAGTTTGAAGACTTCCTGGC  
 CCGAAATGGTCCTCAGAGAAGCGGTTTGGCTGGAGGGCTGTGAAGTATGATTCTGCCTCAAGACC  
 ATCATCGACAAATCCAGCGAGATGGGGATTGAGAATGTCATCTTGGGGATGCCACACAGGGGAAGGCTGA  
 ACGTGTGGCCAACGTGATCCGCAAGGACCTGGAGCAGATCTTCTGCCAGTTTGACCCCAAGCTGGAGGC  
 GCGGACGAGGGCTCCGGGGATGTCAAGTACCACCTGGGCATGTACCATGAGAGGATCAACCGCGTCACC  
 AACCGGAACATCACTCTGTCGCTGGTTGCCAACCCCTCCCACCTGGAGGCAGTGGACCCTGTGGTGCAGG  
 GGAAGACAAAGGCAGAGCAGTTCTACCGTGGAGATGCCAGGGCAAGAAGGTCATGTCCATCCTGGTTCA  
 TGGGGACGCCCTTTGCTGGCCAGGGCGTGGTATATGAGACCTCCACCTGAGCGACCTGCCCTCTAC  
 ACGACCAATGGTACCGTGCACGTGTCGTCACCAACCAGATTGGATTACCACAGACCCCGAATGGCCC  
 GCTCCTACCATACCCGACCGACGTGGCCCGGGTGGTCAATGCGCCTATCTTCCATGTGAATGCCGATGA  
 CCCAGAGGCTGTGATATATGTGTGCAGTGTGGCAGCCGAATGGAGAAACTTTCAACAAAGATGTTGTC  
 GTGGACCTGGTCTGTTACCGCCGGCGTGGCCACAATGAGATGGACGAGCCCATGTTACCCAGCCGCTCA  
 TGTACAAGCAGATCCACAGACAGGTGCCTGTGCTGAAGAAGTACGACAGACAAGCTGATTGCCGAGGGCAC  
 AGTCACCCTGCAGGAGTTTGGAGAAAGAAATGCCAAATACGACCGGATCTGTGAGGAGGCTTATGGCAGG  
 TCCAAGGATAAAAAGATTCTGCATATAAAGCACTGGTTGGACTCCCCCTGGCCTGGCTTCTTCAACGTAG  
 ATGGGGAGCCCAAGAGCATGACATGCCACGACGGGGATCCCTGAGGACATGCTCACCCACATCGGCAG  
 TGTGGCCAGCTCTGTGCCCTGGAGGACTTTAAGATCCACACTGGCCTCTCTCGCATTCTGCGGGGCCGT  
 GCGGACATGACCAAGAACCGGACGGTGGACTGGCGTTGGCAGAGTACATGGCCTTTGGCTCCCTGCTGA  
 AGGAAGGCATCCACGTGCGGCTCAGCGGCAGGATGTGGAGAGGGGCACATTCACTCACCGGCACCATGT  
 TCTCCATGACCAGGAGTTGACCGCAGGACGTGTGTCATGAATCATCTCTGGCTGACCAGGCCCCG  
 TACACCGTGTGCAACAGCTCCCTCTCGGAGTACGGAGTCTGGGCTTTGAGCTGGGCTATGCCATGGCCA  
 GCCCAATGCCCTGGTCTCTGGGAGGCCAGTTTGGGGACTTCCACAACACGGCCAGTGCATCATCGA  
 CCAGTTTCATCAGCACCGCCAGGCCAAGTGGGTGCGGCATAATGGCATTGTGCTGCTGCTGCCCCATGGC  
 ATGGAAGGCATGGGCCAGAGCACTCGTCAGCGAGGCCCGAAAGTTCTGCAGATGAGCAATGATGACT  
 CGGATGCCTACCTGCATTACCAAGGACTTCGAGGTGAGCCAGCTCTATGACTGCAACTGGATCGTGGT  
 CAACTGCTCCACACCGGCCAACTACTTCCACGTGCTGCGCCGGCAGATCCTGCTGCCCTCCGCAAGCCG  
 CTGATTATCTTACACCTAAATCTCTGCTGAGGCACCCAGAGGCCAAGTCCAGCTTTGACCAATGGTAT  
 CCGGGACAGCTTCCAGCGGGTATTCTGAAGATGGGGCCGAGCACGGGCCCTGAGCAGGTGCAGCG  
 GCTCATCTTCTGCACGGAAAGGTGACTATGACCTGGTGAAGGAGCGGAGCAGCCAGGACCTGGAGGAG  
 AAAGTGGCCATCACGCGCTGGAGCAGATCTCTCCATCCCTTCGACCTGATCAAGCAGGAGGCAGAGA  
 AGTACCCAGGTGCGGAGCTGGCTGGTGTGAGGAGGAGCACAAGAATGGGCTACTATGACTACATCAG  
 CCCACGCTTATGACCATCCTGAGGCGCGCACGGCCATATGGTATGTTGGCCGGACCCAGCGGCTGCA  
 CCAGCCACAGGAAACAGGAACACTCACCTGGTGTCACTGAAGAAGTTTCTGGATACTGCCTCAATCTCC  
 AGGCCTTTGAGGGCAAGACATTT

**ACGCGT**ACGCGGCCGCTCGAGCAGAACTCATCTCAGAAGAGGATCTGGCAGCAATGATATCCTGGATT  
 ACAAGGATGACGACGATAAGGTTTAA



**Reconstitution Method:**

1. Centrifuge at 5,000xg for 5min.
2. Carefully open the tube and add 100ul of sterile water to dissolve the DNA.
3. Close the tube and incubate for 10 minutes at room temperature.
4. Briefly vortex the tube and then do a quick spin (less than 5000xg) to concentrate the liquid at the bottom.
5. Store the suspended plasmid at -20°C. The DNA is stable for at least one year from date of shipping when stored at -20°C.

**RefSeq:** [NM\\_001143997.1](#), [NP\\_001137469.1](#)

**RefSeq Size:** 3398 bp

**RefSeq ORF:** 2406 bp

**Locus ID:** 55753

**UniProt ID:** [Q9ULD0](#)

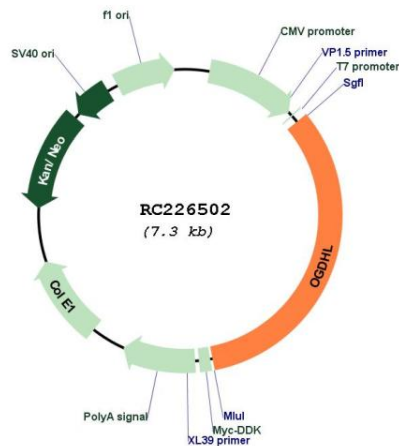
**Cytogenetics:** 10q11.23

**Protein Pathways:** Citrate cycle (TCA cycle), Lysine degradation, Metabolic pathways, Tryptophan metabolism

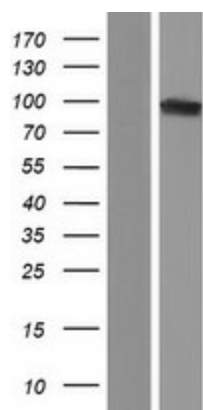
**MW:** 91.7 kDa

**Gene Summary:** The protein encoded by this gene is similar to oxoglutarate dehydrogenase (OGDH) of the OGDH complex, which degrades glucose and glutamate. This gene encodes several isoforms, including some that appear to localize to mitochondria. The encoded protein down-regulates the AKT signaling cascade and can suppress the growth of cervical cancer cells. [provided by RefSeq, Dec 2016]

### Product images:



Circular map for RC226502



Western blot validation of overexpression lysate (Cat# [LY428457]) using anti-DDK antibody (Cat# [TA50011-100]). Left: Cell lysates from untransfected HEK293T cells; Right: Cell lysates from HEK293T cells transfected with RC226502 using transfection reagent MegaTran 2.0 (Cat# [TT210002]).