

Product datasheet for **RC226501**

TM6SF1 (NM_001144903) Human Tagged ORF Clone

Product data:

Product Type:	Expression Plasmids
Product Name:	TM6SF1 (NM_001144903) Human Tagged ORF Clone
Tag:	Myc-DDK
Symbol:	TM6SF1
Mammalian Cell Selection:	Neomycin
Vector:	pCMV6-Entry (PS100001)
E. coli Selection:	Kanamycin (25 ug/mL)
ORF Nucleotide Sequence:	>RC226501 representing NM_001144903 Red=Cloning site Blue=ORF Green=Tags(s)

TTTTGTAATACGACTCACTATAGGGCGGCCGGGAATTCGTCGACTGGATCCGGTACCGAGGAGATCTGCC
GCC**CGATCGCC**

ATGAGTGCCTCTGCGGCCACCGGGTCTTCGTGCTGTCCCTCTCGGCCATCCCGGTCACCTATGTCTTCA
ACCACCTGGCGGCCAGCATGATTCCTGGACTATTGTAGGGTTGCTGCCCTCATCTGTCTGGTAGC
ACTGCTGGCTCGTGTCTCGTCAAAGAAAACCCCGGACCCACTGTTCTATGTGTATGCAGTTTTT
GGATTTACCAGCGTGGTGAACCTCATCATAGGACTGGAGCAAGATGGAATCATTGACGGTTCATGACAC
ACTACTTGAGAGAGGGTGAACCGTATCTGAACACCGCATATGGGCACATGATCTGCTACTGGGATGGCTC
TGCTCATTATCTGATGTACCTGGTGTGGTGGCAGCCATAGCATGGGAGGAACTTATAGAACCATTGGC
CTATATTGGGTTGGATCTATTATTATGAGTGTTGTTGTTTTGTGCCAGGAAACATTGTAGGAAGTATG
GAACACGAATTTGCCCTGCTTTTTCTTAAGCATACCATATACTTGTCTTCTGTCTGGGCTGGTTTCAG
AATCTATAATCAGCCATCAGAAAATTATAATTACCCCTCAAAGGTTATTCAAGAAGCCAAAGCGAAAGAC
CTGCTGAGAAGACATTTGATTTAATGTTGGTTGTGTCTCCTCCTGGCAACTGGATTTGCTGTTCA
GAGGTTTGATGCTGGCATATATGTTCTATTCTGTTCCTACTTTGTGACTGCACTGTATGGCTTAGTGGT
TCCTGGATGTTCTGGATGCCTGACATCATTGATACATGCTGGAGGTCTGGCTCAGGCTCAGTTTTCT
CACATTGGTGCATCTTTCATGTAGAAGTCTTATGTCTACAGAGTCCCTGAAGAAGCAAAAATCCTTT
TTTTAGCATTAAACATAGCATATGGAGTCTTCTCAGCTCTTGGCTATCGTTGTATCTACAAACCAGA
GTTCTTCATAAAAACAAAGGCAGAAGAAAAGTGGAA

ACGCGTACGCGGCCGCTCGAGCAGAACTCATCTCAGAAGAGGATCTGGCAGCAAATGATATCCTGGATT
ACAAGGATGACGACGATAAGGTTTAA



[View online >](#)

Protein Sequence: >RC226501 representing NM_001144903
Red=Cloning site Green=Tags(s)

MSASAATGVFVLSLSAIPVTVYFNHLAAQHDSWTIVGVAALILFLVALLARVLVKRKPDPDPLFYVYAVF
 GFTSVNLIIIGLEQDGIIDGFMTHYLREGEPYLNAYGHMICYWDGSAHYLMYLMVAAIAWEETYRTIG
 LYWVGSIIIMSVVVFVPGNIVGKYGTRICPAFFLSIPYTCLPVWAGFRIYNQPSSENYNYPKVIQEAQAKD
 LLRRPFDLMLVCLLLATGFCLFRGLMLAYMFYSVPYFVTALYGLVVPGCCSWMPDITLIHAGGLAQAFS
 HIGASLHARTAYVYRVEEAKILFLALNIAYGVLPQLLAYRCIYKPEFFIKTKAEKVE

TRTRPLEQKLISEEDLAANDILDYKDDDDKV

Chromatograms: https://cdn.origene.com/chromatograms/mk8053_c09.zip

Restriction Sites: Sgfl-MluI

Cloning Scheme:

Cloning sites used for ORF Shuttling:



* The last codon before the Stop codon of the ORF

ACCN: NM_001144903

ORF Size: 1017 bp

OTI Disclaimer: The molecular sequence of this clone aligns with the gene accession number as a point of reference only. However, individual transcript sequences of the same gene can differ through naturally occurring variations (e.g. polymorphisms), each with its own valid existence. This clone is substantially in agreement with the reference, but a complete review of all prevailing variants is recommended prior to use. [More info](#)

OTI Annotation: This clone was engineered to express the complete ORF with an expression tag. Expression varies depending on the nature of the gene.

Components: The ORF clone is ion-exchange column purified and shipped in a 2D barcoded Matrix tube containing 10ug of transfection-ready, dried plasmid DNA (reconstitute with 100 ul of water).

Reconstitution Method:

1. Centrifuge at 5,000xg for 5min.
2. Carefully open the tube and add 100ul of sterile water to dissolve the DNA.
3. Close the tube and incubate for 10 minutes at room temperature.
4. Briefly vortex the tube and then do a quick spin (less than 5000xg) to concentrate the liquid at the bottom.
5. Store the suspended plasmid at -20°C. The DNA is stable for at least one year from date of shipping when stored at -20°C.

RefSeq: [NM_001144903.3](#)

RefSeq ORF: 1020 bp

Locus ID: 53346

UniProt ID: [Q9BZW5](#)

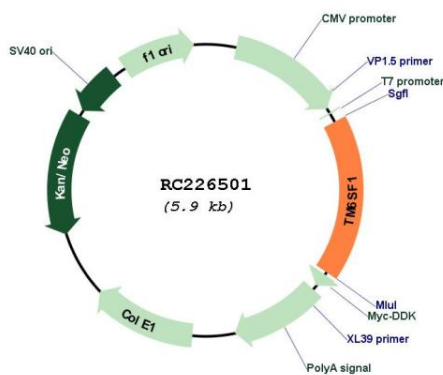
Cytogenetics: 15q25.2

Protein Families: Transmembrane

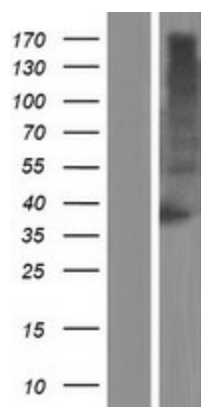
MW: 37.9 kDa

Gene Summary: May function as sterol isomerase.[UniProtKB/Swiss-Prot Function]

Product images:



Circular map for RC226501



Western blot validation of overexpression lysate (Cat# [LY428560]) using anti-DDK antibody (Cat# [TA50011-100]). Left: Cell lysates from untransfected HEK293T cells; Right: Cell lysates from HEK293T cells transfected with RC226501 using transfection reagent MegaTran 2.0 (Cat# [TT210002]).