

Product datasheet for RC226456

Dysferlin (DYSF) (NM_001130987) Human Tagged ORF Clone

Product data:

Product Type:	Expression Plasmids
Product Name:	Dysferlin (DYSF) (NM_001130987) Human Tagged ORF Clone
Tag:	Myc-DDK
Symbol:	Dysferlin
Synonyms:	FER1L1; LGMD2B; LGMDR2; MMD1
Mammalian Cell Selection:	Neomycin
Vector:	pCMV6-Entry (PS100001)
E. coli Selection:	Kanamycin (25 ug/mL)
ORF Nucleotide Sequence:	>RC226456 representing NM_001130987 Red=Cloning site Blue=ORF Green=Tags(s)

TTTTGTAATACGACTCACTATAGGGCGGCCGGAATTCGTCGACTGGATCCGGTACCGAGGAGATCTGCC
GCC**CGATCGCC**

ATGCTGTGCTGCCTGCTGGTGAGGGCCAGCAACCTCCCCAGTGCGAAGAAGGACCGGCGCAGCGACCCTG
TCGCAAGCCTGACTTCCGAGGGGTGAAGAAGAGAACCAAGTCATCAAGAACAGCGTGAACCCTGTATG
GAATGAGGGATTGAATGGGACCTCAAGGGCATCCCCGGACCAGGGCTCTGAGCTTCATGTGGTGGTC
AAAGACCATGAGACGATGGGAGGAACAGGTTCTGGGGAAAGCAAGTCCCCTCCGAGAGGTCTCTCG
CCACCCCTAGTCTGTCCGCCAGTTCAATGCCCCCTGCTGGACACCAAGAAGCAGCCCACAGGGGCTC
GCTGGTCTGCAGGTGTCTACACACCGCTGCCTGGAGCTGTGCCCTGTTCCCGCCCCCTACTCCTCTG
GAGCCCTCCCCGACTCTGCCTGACCTGGATGTAGTGGCAGGCGGGGACAGAGCCGGGCCGAGACTTGGT
CCCTGCTCAGTGACAGCACCATGGACACGAGATACTCTGGAAAGAAGTGGCCGGCCCCACGGACACAGG
AGGAGAGGAAGACACAGAGGACCAGGGACTCACTGGAGATGAGGCGGAGCCATTCTGGATCAAAGCGGA
GGCCCCGGGGCTCCCACCACCCAAGGAAACTACCTTCACGTCTCCGCCCCACTACCCGGGATCAAAA
GAAAGCGAAGTGCCTACATCTAGAAAGCTGTGTGACAAAACCGCAGGATTTCCAGATCAGGGTCCA
GGTGATCGAGGGGCGCCAGCTGCCGGGGTGAACATCAAGCCTGTGGTCAAGGTTACCGTGCAGGGCAG
ACCAAGCGGACGGGATCCACAAGGGAACAGCCACTTCAATGAGACTCTTTTCTTCAACTTGTGTTG
ACTCTCCTGGGGAGCTGTTTGTGAGCCCATTTATCACGGTGGTAGACTCTCGTCTCTCAGGACAGA
TGCTCTCCTCGGGGAGTCCGGATGGACGTGGGCACCATTTACAGAGAGCCCCGGCACGCCTATCTCAGG
AAGTGGCTGCTGCTCAGACCCTGATGACTTCTCTGCTGGGGCCAGAGGCTACCTGAAAACAAGCCTTT
GTGTGCTGGGGCTGGGGACGAAGCGCCTCTGGAGAGAAAAGACCCCTCTGAAGACAAGGAGGACATTGA
AAGCAACCTGCTCCGGCCACAGGCGTAGCCCTGCGAGGAGCCCACTTCTGCCTGAAGGTCTTCCGGGCC
GAGGACTTGCCGACAGATGGACGATGCCGTGATGGACAACGTGAAACAGATCTTTGGCTTCGAGAGTAACA
AGAAGAAGTGGTGGACCCCTTTGTGGAGTCACTTTGGGGGAAAATGCTGTGCAGCAAGATCTTGA
GAAGACGGCAACCTCAGTGAACAGAACATCACACTGCCTGCCATGTTCCCTCATGTGCGAAAAA



[View online >](#)

ATGAGGATTCGTATCATAGACTGGGACCGCTGACTCACAATGACATCGTGGCTACCACCTACCTGAGTA
 TGTCGAAAATCTCTGCCCTGGAGGAGAAAATAGAAGTGGATGACTACCTGGGCTTCTCCCACTTTTGG
 GCCCTGTACATCAACCTCTATGGCAGTCCCAGAGAGTTACAGGCTTCCCAGACCCCTACACAGAGCTC
 AACACAGGCAAGGGGGAAGGTGTGGCTTATCGTGGCCGGCTTCTGCTCTCCCTGGAGACCAAGCTGGTGG
 AGCACAGTGAACAGAAGTGGAGGACCTTCTGCGGATGACATCTCCGGTGGAGAAGTACCTTAGGAG
 GCGCAAGTACTCCCTGTTTGGCGCTTCTACTCAGCCACCATGCTGCAGGATGTGGATGATGCCATCCAG
 TTTGAGGTCAGCATCGGAACTACGGGAACAAGTTCGACATGACCTGCCCTGCCGTGCCCTCCACCACTC
 AGTACAGCGTGCAGTCTTTGACGGGTGCCACTACTACTACCTACCCTGGGGTAACGTGAAACCTGTGGT
 GGTGCTGTATCCTACTGGGAGGACATCAGCCATAGAATCGAGACTCAGAACCAGCTGCTTGGGATTGCT
 GACCGGCTGGAAGCTGGCCTGGAGCAGGTCCACCTGGCCCTGAAGGCGCAGTGTCCACGGAGGACGTGG
 ACTCGCTGGTGGCTCAGCTGACGGATGAGCTCATCGCAGGCTGCAGCCAGCCTCTGGGTGACATCCATGA
 GACACCCTCTGCCACCCACTGGACCAGTACCTGTACCAGCTGCGCACCCATCACCTGAGCCAAATCACT
 GAGGCTGCCCTGGCCCTGAAGCTCGGCCACAGTACCTGACCTGCGCACCCATCACCTGAGCCAAATCACT
 TCCCTGCGTCTGCGTGCCTGGCAGAGGAGCCCCAGAACAGCTGCCGGACATCGTATCTGGATGCTGCA
 GGGAGACAAGCGTGTGGCATAACAGCGGTGCCGCCACCAAGTCTTCTCCCGCGGGGTGCCAAC
 TACTGTGGCAAGAATTGTGGGAAGCTACAGACAATCTTTCTGAAATATCCGATGGAGAAGGTGCCTGGCG
 CCCGGATGCCAGTGCAGATACGGGTCAAGCTGTGGTTGGGCTCTCAGTGGATGAGAAGGAGTTCAACCA
 GTTTGCTGAGGGGAAGCTGTCTGTCTTTGCTGAAACCTATGAGAACGAGACTAAGTTGGCCCTTGTGGG
 AACTGGGGCACAACGGGCCTCACCTACCCCAAGTTTTCTGACGTACGGGCAAGTCAAGCTACCCAAGG
 ACAGCTTCCGCCCTCGGCCGGCTGGACCTGGGCTGGAGATTGGTTCTGTGTCCGGAGAAGACTCTGCT
 CCATGACATGGACCGCGTACCTGAGCTTCGTGGAAGAGGTGTTGAGAACCAGACCCGGCTTCCCGGA
 GCCAGTGGATCTACATGAGTGACAACACACCGATGTGAACGGGGAAGGTGCTTCCCAAGGATGACA
 TTGAGTGCCCACTGGGCTGGAAGTGGGAAGATGAGGAATGGTCCACAGACCTCAACCCGGCTGTCGATGA
 GCAAGGCTGGGAGTATAGCATACCCATCCCCCGGAGCGGAAGCCGAAGCACTGGGTCCCTGAGAAG
 ATGTAACACACACCGACCGCGCGCTGGGTGCGCCTGCGCAGGAGGGATCTCAGCCAAATGGAAGCAC
 TGAAGGACAGGCAGGCGGAGGCGGAGGGCTGGGAGTACGCCTCTCTTTTGGCTGGAAGTT
 CCACCTCGAGTACCGCAAGACAGATGCCTTCCGCCCGCGCTGGCGCCGTGCGATGGAGCCACTGGAG
 AAGACGGGCGCTGCAGCTGTGTTGCCCTTGGGGGGCCCTGGCGCGGTGATGGATGACAAGAGTGAAG
 ATTCATGTCCGTCTCCACCTTGGCTTCCGTGTGAACAGACCCACGATTTCTGCATATTCGACTATGG
 GAACCGCTACCATCTACGCTGCTACATGTACCAGGCCGGGACCTGGCTGCGATGGACAAGGACTTTTT
 TCTGATCCCTATGCCATCGTCTCCTTCCCTGCACCAGAGCCAGAAGACGGTGGTGGTGAAGAACCCCTTA
 ACCCCACCTGGGACCAGACGCTCATCTTCTACGAGATCGAGATCTTTGGCGAGCCGGCCACAGTTGCTGA
 GCAACCGCCAGCATTGTGGTGGAGCTGTACGACCATGACACTTATGGTGCAGACGAGTTTATGGGTGCG
 TGCATCTGTCAACCGAGTCTGGAACGGATGCCACGGCTGGCCTGGTTCCTACTGACGAGGGGCGAGCCAGC
 CGTCCGGGGAGCTGCTGGCCTCTTTGAGCTCATCCAGAGAGAGAAGCCGGCCATCCACCATATTCCTGG
 TTTTGGGTGCAGGAGACATCAAGGATCCTGGATGAGTCTGAGGACACAGACCTGCCCTACCCACCAACC
 CAGAGGGAGGCCAACATCTACATGGTTCCTCAGAACATCAAGCCAGCGCTCCAGCGTACCGCCATCGAGA
 TCCTGGCATGGGGCTGCGGAACATGAAGAGTTACCAGCTGGCCAACATCTCTCCCCAGCCCTGTGGT
 AGAGTGTGGGGCCAGACGGTGCAGTCTGTGTCATCAGGAACCTCCGGAAGAACCCCAACTTTGACATC
 TGCACCCCTTTCATGGAAGTGTGCTGCCAGGGAGGAGCTCTACTGCCCCCCATCACCGTCAAGGTCA
 TCGATAACCGCCAGTTTGGCCGCGGCCTGTGGTGGGCCAGTGTACCATCCGCTCCTGGAGAGTCTCT
 GTGTGACCCCTACTCGGCGGAGAGTCCATCCCCACAGGGTGGCCAGACGATGTGAGCCTACTCAGTCT
 GGGGAAGACGTGCTCATCGACATTGATGACAAGGAGCCCTCATCCCCATCCAGTTGCAGACGGTCTGT
 CGAGCTTGGCCCCACTAACACGGCTTCTCCTCCATCCAGTCTCATGAGGAAGAGTTTCATCGATTGGT
 GAGCAAATTTTGCCTCCATAGGGGAGAGGAAAAGTGGGCTCCTACCTGGAGAAGGATTTTACACC
 CTGAAGGTCTATGACACACAGCTGGAGAATGTGGAGGCCCTTGGGGCTGTCTGACTTTTGAACCT
 TCAAGCTGTACCGGGCAAGACGCAGGAGGAGACAGAAGATCCATCTGTGATTGGTGAATTAAGGGCT
 CTTCAAATTTATCCCTCCAGAAAGACCCAGCCATCCCATGCCCCCAAGACAGTTCCACAGCTGGCC
 GCCCAGGGACCCAGGAGTGTGGTCCGTATCTACATTGTCCGAGCATTGGCCTGCAGCCCAAGGACC
 CCAATGGAAGTGTGATCCTTACATCAAGATCTCCATAGGGAAGAAAATCAGTGAAGTACCAGGATAACTA
 CATCCCTGCACGCTGGAGCCGTATTTGGAAAGATGTTCCAGCTGACCTGCACTCTGCCTCTGGAGAAG
 GACCTAAAGATCACTCTATGACTATGACCTCCTCTCAAGGACGAAAAGATCGGTGAGACGGTCTGTCG

ACCTGGAGAACAGGCTGCTGTCCAAGTTTGGGGCTCGCTGTGGACTCCCACAGACCTACTGTGTCTCTGG
ACCGAACCAGTGGCGGGACCAGCTCCGCCCTCCCAGCTCCTCCACCTCTTCTGCCAGCAGCATAGAGTC
AAGGCACCTGTGTACCGGACAGACCGTGTAAATGTTTCAGGATAAAGAATATTCCATTGAAGAGATAGAGG
CTGGCAGGATCCCAAACCCACACCTGGGCCAGTGGAGGAGCGTCTGGCTCTGCATGTGCTTCAGCAGCA
GGGCCTGGTCCCGGAGCACGTGGAGTACCGGCCCTCTACAGCCCCTGCAGCCAGACATCGAGCAGGGG
AAGCTGCAGATGTGGTTCGACCTATTTCCGAAGGCCCTGGGGCGGCCTGGACCTCCCTTCAACATCACCC
CACGGAGAGCCAGAAGGTTTTCTGCGTTGTATTATCTGGAATACCAGAGATGTGATCCTGGATGACCT
GAGCCTCACGGGGGAGAAGATGAGCGACATTTATGTGAAAGGTTGGATGATTGGCTTTGAAGAACAAG
CAAAAGACAGACGTGCATTATCGTTCCCTGGGAGGTGAAGGCAACTTCAACTGGAGGTTCAATTTCCCT
TCGACTACCTGCCAGCTGAGCAAGTCTGTACCATTGCCAAGAAGGATGCCTTCTGGAGGCTGGACAAGAC
TGAGAGCAAAATCCCAGCACGAGTGGTGTCCAGATCTGGGACAATGACAAGTTCTCCTTTGATGATTTT
CTGGGCTCCCTGCAGCTCGATCTCAACCGCATGCCAAGCCAGCCAAGACAGCCAAGAAGTGCTCCTTG
ACCAGCTGGATGATGCTTCCACCCAGAATGGTTTGTGTCCCTTTTGGAGCAGAAAACAGTGAAGGGCTG
GTGGCCCTGTGTAGCAGAAGAGGGTGAGAAGAAAATACTGGCGGGCAAGCTGGAATGACCTTGGAGATT
GTAGCAGAGAGTGAAGCATGAGGAGCGGCCTGCTGGCCAGGGCCGGATGAGCCCAACATGAACCCTAAGC
TTGAGGACCCAAGGCGCCCGACACCTCCTTCTGTGGTTTACCTCCCCATAAAGACCATGAAGTTCAT
CCTGTGGCGCGTTTTCCGGTGGGCCATCATCCTTTCATCATCCTCTTATCCTGCTGCTGTTCTCGGCC
ATCTTTCATCTACGCCTTCCCGAAGTATGCTGCCATGAAGCTGGTGAAGCCCTTCAGC

ACGCGTACGCGGCCGCTCGAGCAGAACTCATCTCAGAAGAGGATCTGGCAGCAATGATATCCTGGATT
ACAAGGATGACGACGATAAGGTTAA

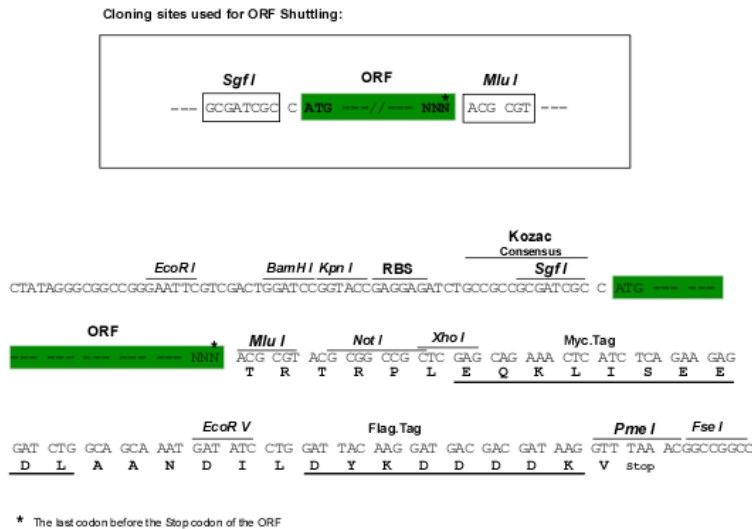
Protein Sequence: >RC226456 representing NM_001130987
 Red=Cloning site Green=Tags(s)

MLCCLLVRASNLPsAKKDRRSDPVASL TFRGVKKRTKVIKNSVNPVWNEGFEDLKGIPLDQGSSELHVVV
 KDHETMGRNRFLEAKVPLREVLATPSLSASFNAPLLDTKKQPTGASLVLQVSYTLPGLGAVPLFPPPTPL
 EPSPTLPDL DVVAGGGQsRAETWSLLSDSTMDTRYSGKKWPAPTD TGGEEDTEDQGLTGDEAEPFLDQSG
 GPGAPTTPRKLPsRPPPHYPGIKRKRSAPTSRLKSDKPQDFQIRVQVIEGRQLPGVNIKPVVKVTAAGQ
 TKRTRIHKGNsPLFNETLFFNLFDSPGELFDEPIFITVVDsRSLRTDALLGEFRMDVGTIYREPRHAYLR
 KWLLLSDPDDFSAGARGYLKTSCLVLPGDEAPLERKDPSEDKEDIESNLLRPTGVALRGAHFCLKVFRA
 EDLPQMDDAVMDNVKQIFGFESNKNLVDPFVEVSFAGKMLCSKILEKTANPQWNQITL PAMFSPMCEK
 MRIRIIDWDRLTHNDIVATTYLSMSKISAPGGEIEVDDYLGFLPTFGPCYINLYGSPRETFGPDPTTEL
 NTGKGEGVAYRGRLLL SLETKLVEHSEQKVEDLPADDILRVEKYLRRRKYSLFAAFYSATMLQDVEDDAIQ
 FEVSIgNYGNKFDMTCLPLASTTQYSRAVFDGCHYYLWPWGNV KPVVVLSSYWEDISHRIETQNQLLGIA
 DRLEAGLEQVHLALKAQCSTEDVDSLVAQLTDEL IAGCSQPLGDIHETPSATHLDQYLQLRTHHL SQIT
 EAALALKLGHSELPAALEQAEDWLLRLRALAEEPQNSLPDIVIWM LQGDKRVAYQRVPAHQVLFsRRGAN
 YCGKNCGLQTI FLKYPMEKVPGARMPVQIRVKLWFGLSVDEKEFNQFAEGKLSVFAETYENETKLALVG
 NWGTTGLTYPKFSDVTGKIKLPKDSFRPSAGWTWAGDWFVCP EKTLLHMDAGHLSFVEEVFENQTRLPG
 GQWIYMSDNYTDVNGEVL PKDDIECPLGWKWEDEEWSTDLNRAVDEQGW EYSITIPPERKPKHWVPAEK
 MYYTHRRRRWVRLRRRDL SQMEALKRHRQAEAE GEGWEYASLFGWKFHLEYRKTDAFRRRRWRRRMEPLE
 KTGPAAVFALEGALGGVMDDKSEDSMSVSTL SFGVNRPTISCI FDYGNRYHLRCYMYQARDAAMDKDSF
 SDPYAIVSFLHQSQKTVVVKNTLNPTWDQTLIFYEIEIFGEPATVAEQPPSIVVELYDHDTYGADEFMGR
 CICQPSLERMPRLAWFPLTRGSQPSGELLASFELIQREKPAIHHPGF EYQETSRI LDESED TDLPYPPP
 QREANIYMPQNIKPALQRTAIEILAWGLRNMKSYQLANI SSPSLVVECGGQTVQSCVIRNL RKNPNFDI
 CTLFMEVMLPREELYCPPITVKVIDNRQFGRRPVVVGQCTIRSLESFLCDPYSAESPSPQGGPDDVSLSP
 GEDVLIDIDDKEPLIPIQLADGLSSLAPTNTASPPSSPHEEFIDWWSKFFASIGEREKCGSYLEKDFDT
 LKVYDTQLENVEAFEGLSDFCNTFKLYRGTQEETEDPSVIGEFKGLFKIYLPEDPAIPMPPRQFHQLA
 AQQPQECLVRIYIVRAFGLQPKDPNGKCDPYIKISIGKKSVDQDNYIPCTLEPVFGKMFELTCTLPLEK
 DLKITLYDYDLLSKDEKIGETVVDLENRLLSKFGARCGLPQTYCVSGPNQWRDQLRPSQLLHLFCQQHRV
 KAPVYRTDRVMFQDKEYSIEEIEAGRIPNPHLGPVEERLALHVLQQQGLVPEHVESRPLYSPLQPDIEQG
 KLQMWVDLFPKALGRPGPPFNITPRRARRFFLRCCIWNTRDVI LDDLSTG EKMSDIYVKGWMI GFEEHK
 QKTDVHYRSLGGEGNFNWRFIFFDYLP AEQVCTIAKKDAFWRLDKTESKIPARVVFQIWDNDKFSFDDF
 LGSLQLDLNRMPKPAKTAKKCSLDQLDDAFHPEWVSLFEQKTVKGW WPCVAEEGKILAGKLEMTLEI
 VAESEHEERPAGQGRDEPNMNPKLEDPRRPDTSFLWFTSPYKTMKFI LWRRFRWAILFIILFILLFLA
 IFIYAFPNYAAMKLVKPFs

TRTRPLEQKLISEEDLAANDILDYKDDDDKV

Chromatograms: https://cdn.origene.com/chromatograms/mk8006_d01.zip

Restriction Sites: SgfI-MluI

Cloning Scheme:


ACCN: NM_001130987

ORF Size: 6357 bp

OTI Disclaimer: The molecular sequence of this clone aligns with the gene accession number as a point of reference only. However, individual transcript sequences of the same gene can differ through naturally occurring variations (e.g. polymorphisms), each with its own valid existence. This clone is substantially in agreement with the reference, but a complete review of all prevailing variants is recommended prior to use. [More info](#)

OTI Annotation: This clone was engineered to express the complete ORF with an expression tag. Expression varies depending on the nature of the gene.

Components: The ORF clone is ion-exchange column purified and shipped in a 2D barcoded Matrix tube containing 10ug of transfection-ready, dried plasmid DNA (reconstitute with 100 ul of water).

Reconstitution Method:

1. Centrifuge at 5,000xg for 5min.
2. Carefully open the tube and add 100ul of sterile water to dissolve the DNA.
3. Close the tube and incubate for 10 minutes at room temperature.
4. Briefly vortex the tube and then do a quick spin (less than 5000xg) to concentrate the liquid at the bottom.
5. Store the suspended plasmid at -20°C. The DNA is stable for at least one year from date of shipping when stored at -20°C.

RefSeq: [NM_001130987.2](#)

RefSeq ORF: 6360 bp

Locus ID: 8291

UniProt ID: [O75923](#)

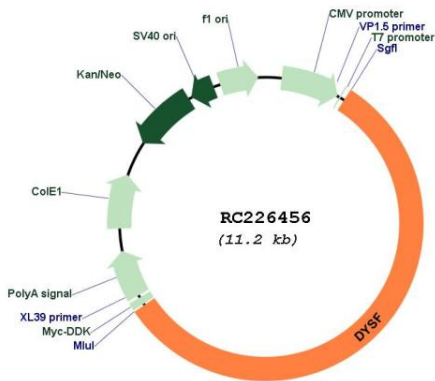
Cytogenetics: 2p13.2

Protein Families: Transmembrane

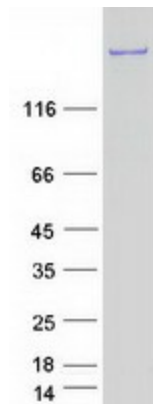
MW: 241.2 kDa

Gene Summary: The protein encoded by this gene belongs to the ferlin family and is a skeletal muscle protein found associated with the sarcolemma. It is involved in muscle contraction and contains C2 domains that play a role in calcium-mediated membrane fusion events, suggesting that it may be involved in membrane regeneration and repair. In addition, the protein encoded by this gene binds caveolin-3, a skeletal muscle membrane protein which is important in the formation of caveolae. Specific mutations in this gene have been shown to cause autosomal recessive limb girdle muscular dystrophy type 2B (LGMD2B) as well as Miyoshi myopathy. Alternative splicing results in multiple transcript variants. [provided by RefSeq, Aug 2008]

Product images:



Circular map for RC226456



Coomassie blue staining of purified DYSF protein (Cat# [TP326456]). The protein was produced from HEK293T cells transfected with DYSF cDNA clone (Cat# RC226456) using MegaTran 2.0 (Cat# [TT210002]).