

Product datasheet for **RC226440**

PCNXL3 (PCNX3) (NM_032223) Human Tagged ORF Clone

Product data:

Product Type:	Expression Plasmids
Product Name:	PCNXL3 (PCNX3) (NM_032223) Human Tagged ORF Clone
Tag:	Myc-DDK
Symbol:	PCNXL3
Synonyms:	PCNXL3
Mammalian Cell Selection:	Neomycin
Vector:	pCMV6-Entry (PS100001)
E. coli Selection:	Kanamycin (25 ug/mL)
ORF Nucleotide Sequence:	>RC226440 representing NM_032223 Red=Cloning site Blue=ORF Green=Tags(s)

TTTTGTAATACGACTCACTATAGGGCGCCGGGAATTCGTCGACTGGATCCGGTACCGAGGAGATCTGCC
GCC**CGATCGCC**

ATGGGGTCGCAGGTGTTGCAGATCCTGCGCCAGGGGGTGTGGCCTCGCTCACGGCGGTTGGTTCTTCG
ACCCGCACCAGAGCACCTTCTCCAAGTCTCCACCTCTATGTGTGGATCTTCTGCTCATCTTTCCCTT
CTTACTGTACATGGTCTGCCTCCAGCTTGATGGTGGCCGGCGTACTGCCTCGTGGTGGCTGTCATC
TTTGCTACTATCAAGACTGTCAATTATCGGCTTCATGCCATGTTTGACCAGGGCGAGATCGTGGAGAAGC
GCAGCTCTACCATGGGGAGCTGGAGGAAGAGCCTGCCAGGGGGACAGCAATCCACCCAGGGACCCCGG
AGTGGAGATGACAGTGTCCGGAAAGTCAGTTCACACCCCGGTGCGCTGCAGCTCCAGCACTCTGTG
TTTGGCTTCAACCAGGTCTCGGAGCTGCTGCCCGAATGGAGGACTCTGGGCCCTTAGAGACATCAAGG
AGCTGGTGCAGGAGCAGGGCAGCAACAATGTGATCGTGACTTCTGCCGACCGAGAGATGTGAAGCTCAG
CTCGCAGGAGAACTGATTGGAGACCTTCCCGAGACGCTCCAGGGGCTGTCCAGACCCCTCTCTTGCC
AGTACAGACTCTTCAAGACCTTCTCCCTGGCTGGAGATGGAGCGCCCTGGAGTGGGAGCAGCATGGCTG
ACACTCCCATGAGCCCCCTGTGAAGGGGAGCCTCAGCCAGGAGCTGAGCAAGAGCTTCTGACCCTGAC
CCAGCTGACCGGGCCCTGGTGAAGGACAGCAGTGCAGCGGAACAACGCAGGGGGCAGGTGGCTATCAG
CCCCTTGACCGGGGGCTCAGGGGAGCCACGCCAGAAAGCCGGCTCCTCAGACTCCTGCTTTCAGCG
GCACTGACAGGGAGACATTGAGCAGCTTCAAGAGTGAGAAGACCACTCCACCCATCTGGACAGCCCCC
AGGGGGCCAGCCCTGAGGGCAGCGACACAGACCCACCTCTGAGGCTGAGCTGCCTCACCAGAC
GCCGGGTCCCCTCAGATGACACGCTGCGTTTCTTTGACACGGTCATTGGAGCAGGGACGCCACCGGGCC
TGGCTGAGCCGCTCTGGTCTGCGGCCAAGGACTTGGCCCTGCTACGGCTAGCAAACGGCAGCCACC
CCTGCGAAGACTCTCCACTGGCCGTGCCCTCGACGGCCCTGCTTGAAGTGGGGCTTCTTTGAG
GATGAAGACTAGTGAAGGAGTGAAGTGAAGGAGCCCGCTCCAGTCTCCGATCGCAGCGCCGCTACAGTA
CTGACAGCTCCTTCTACTTCTGCTACTCCCCTGAGAGCTCCCGGGTGCAGCAGGGGGACCCGGAA
GCGGAGGGCCCCCATGGGGCTGAGGAGGAAGTCTGTGCCCCCAAGCGGCCATATGGGACCCAGCGG



ACGCCTAGTACCGCCAGCGCTAAAACACATGCCCGTGTGCTGAGCATGGATGGGGCTGGGGGTGATGTTCTGAGGCCCCACTGGCTGGCTGCAAGGCAGAGCTGGAGGCCAGGTTGGGGTGGAGCAGGCTGCTAGTGA
 GCCTGTTGTGCTGCCTGCTGAGGCGCGAAGGGGACCCGCTGCCAACCAGCCCGGCTGGCGGGGGAGCTG
 CAGGAGGAAGGTGCTGTGGGGGAGCGGCCGAGGAGACTGGCAGGCGGGACCCGCTCAAGCAGTGTGAGGC
 GGACCCAGGCCATTTCGAGACGCCACAATGCAGGCAGCAACCCACCCCTCCAGCCTCTGTATGGGCTC
 GCCGCCAGCAGCCTGCAGGAAGCTCAGCGGGGCCGGGCTGCCTCCCACTCCCGGGCGTACGCTGCC
 TCTGCGCTGCATTTCCGCTCTTCACTGTTGCTCACCCGGGCCGGTCCCAATGTGCATGAGGCTGCACCT
 TTGATGACACTTCTGAGGGTGTGTGCACTATTTCTACGATGAGAGCGGTGTGCGCGTTCTACACCTT
 TGGCCTGGCTGGAGGCGGCTACGAGAACCCTGTAGGGCAGCAAGGGGAGCAGACGCTAATGGAGCCTGG
 GACCGACACTCGCATTCTCCAGCTTCCACTCGGCTGATGTCCCTGAGGCTACAGGCGGCCTGAACCTGC
 TGCAGCCGAGGCTGTGGTTCTGCAGGGCATGCAGGTGCGCCGGGTGCCCTGGAGATCCCGGAGGAGCA
 GACTGATGGAAGAAGCGCCACCCGGGGCCAGCATAGTTACAAGTACTGGCTTCTCCCTGGCCGCTGG
 ACCTCTGTGCGCTATGAGCGCTTGCCTGCTGGCTCTGCTGGACCGACGCGGGAGTGTGGAGAACA
 TCTTCGGCGTGGCCTGAGCAGCCTTGTGGCTTCTGGGCTACCTGCTGCTGCTCAAGGGCTTCTTAC
 TGACATCTGGGTCTTCCAGTTCTGCCTGGTTCATCGCCTCTGCCAGTACTCCTTGTGAAGAGCGTGCAG
 CCTGATGCGGCGTCCCCATGCACGGCCACAACGGGTGATCGCGTACAGCCGCTCCTGTCTACTTCTGCA
 TCTGCTGTGCTCATCTGGCTGCTGGACGCCCTGGGCTCAGCTCAGCCCTTCCACCTGTCTCCCTCTA
 CGGCTCACGCTTCTCTGCTCCTTCTTCTTGTGCCGAGACGTGGCCACTGTGTTACCCTGTGC
 TTTCCCTTCGTCTTCTCCTGGGCTCCTGCCAGGTCAACACCTGCCTCATGTACCTGCTGGAGCAAA
 TAGATATGCACGGCTTCGGGGGCACAGCTGCCACCAGCCCGCTCACGGCAGTCTTACGCTCTCCCGCAG
 CCTGCTGGCTGCTGCCCTGCTACGGTTTCTGCCTTGGGGCCATCAAGACTCCGTGGCCAGAGCAGCAC
 GTCCCTGTCTCTTCTCAGTCTTCTGTGGCTCCTGGTGGCACTGTCTACCACCTGAGCCGGCAGAGCA
 GCGACCCACCGTGTCTGGTCTGTGATCCGGAGCAAGTGTCCCTGAGCTGGAGGAGCAGCTTGGAG
 GACAGCCCGGGCCGAGCCCGGACCCCTTGGCCGACAAGATGCCCCAGTCCGGTGGTGGTCTTGGCAC
 TCCGACCTGGTGTGTGTGGTGTGATCGCCGTGCTCACCTTCGCCATCAGCGCCAGCACCCTTTTATTG
 CCCTGAAGTCCGTGCTGGGTTTCGTGTTGTACGCACTGGCTGGGGCCGTGGGCTTCTTACACATTACCT
 GCTGCCACAACCTCCGAAACAGCTGCCCTGGTTCTGCCTGTACAGCCCGTGTGAAGCCGCTGGAGTAC
 AGCCAGTATGAAGTGCAGGCTGCCGCCAGGTGATGTGGTTTGAAGCTGTATGCTGGCCTGCAGTGGC
 TAGAGAAGTACCTCATCTACCCCGCGTGGTGTCAACGCCCTCACGGTGGACGCCACACAGTGCAG
 CCACCCGACAAGTACTGCTTCTACTGCCGGCGCTGCTGATGACCGTGGCTGGGCTGAAGTGTGCGC
 TCAGCCTTCTGCTGCCCCCACAGCAGTACCTGACGTTGGCTTACCGTCTGCTTCCACTTTGACT
 ACCCGCGCTCTCCAGGGCTTTCTGCTTGACTACTTCTCATGTCCCTGCTTTGAGCAAGCTGTGGGA
 CTTGCTGTACAAGCTGCGTTTCTGTGCTGACCTACATCGCGCCCTGGCAGATCACCTGGGGCTCGGCTTTC
 CACGCTTTTGCCAGCCGTTTGGCGTGCCACACTCGGCCATGCTGTTTCGTCCAGGCCCTGCTCTCGGGC
 TCTTCTCCACGCCTCTCAACCCACTGCTAGGCAGTGCCGTCTTCAATCATGTCTACGCTCGGCCCTCAA
 GTTCTGGGAGCGGACTACAACACTAACCGTGTGGATCATTCCAACCCCGCTGGTACACAGCTGGAC
 AGGAACCTGGGCTGATGACAACAACCTCAACTCCATCTTCTATGAGCACTTGCACGTTCCGTCGAGC
 ACACACTGTGTGGGACCTGGTGTGGCCGCTGGGGCAACTATGGCCCTGGTACTGCTTCGCTCTGGC
 CTCTGACTACCTCAACGCCCTGGTGCACCTCATCGAGGTTGGCAATGGCCTCGTACCTTCCAGCTGCGT
 GGCTTGAAGTCCGGGGCACTTACTGCCAGCAGCGGAGGTGGAGGCTATCACCGAGGTTGGAGGAGG
 ACGAGGGCTGTTGCTGCTGTGAACCTGGCCACCTGCCACGGTCTGTCCTTCAATGCTGCCTTTGGGCA
 GCGCTGGCTGGCTGGGAGGTAACAGCCAGCAAGTACGTGCTGGAGGGCTATAGCATTAGTGACAATAAT
 GCTGCCTCCATGCTGCAGGTTTTGACCTCCGCAAGATCCTCATCACCTACTATGTCAAGAGCATCATCT
 ACTACGTGAGCCGCTACCAAAGCTGGAGGTGTGGCTCAGCCATGAGGGCATCACGGCAGCCCTGAGGCC
 TGTGCGGGTGGCCGCTATGCCGACTCGGATCCACCTTCTCGCTGAGTGTGGATGAGGACTATGACCTC
 CGCCTGTCTGGCCTCTGCTGCCCTCCTTTTGTGCTGTGCACCTCGAGTGGATCCAGTACTGCGCCTCCC
 GCGCAGCCAGCCGTGGACCAGGATTGGAACCTCCCGCTGGTACGCTGTGTTTGGCCTGTGTGTGCT
 GGGCCCGGGCCCTGGGGACAGCTCTCACAGCATGTCTGCAAGCCTGGAGCCCTTCTCTACGGCCTG
 CACGCCCTGTTCAAGGGGATTTTCGCATCACCTCCCCACGTGACGAGTGGGCTTTTGGCAGATGGACC
 TGCTTACCGCGTTGTGGCGCTGGGGTTTCGCATGGCCCTCAAGCTTACCAGGACCACTTACGTCCTCC
 AGATGAATATGAGGAGCCAGCAGCCCTATACGATGCCATTGCGGCCAACGAGGAGCGGCTGGTCACTCA
 CATGAGGGTGACCCAGCATGGCGCAGCGCCATCCTCAGCAACACGCCCTCCCTGCTGGCGCTGCGCCATG

TCCTGGATGATGCCTCCGACGAGTACAAGATCATCATGCTCAACCGGCGCCACCTCAGCTCCGAGTCAT
CAAGGTGAACCGGGAGTGCCTGCGCGGCTGTGGGCCGGGCAGCAGCAGGAGCTGGTGTTCTGCGCAAC
CGCAACCCCGAGCGTGGCAGCATCCAGAACGCCAAGCAGGCGCTTCGCAACATGATCAACTCCTCCTGTG
ACCAGCCGCTGGGCTACCCATCTACGTGTGCGCTCTCACCACCTCGCTGGCTGGCAGCCACCCAGCT
ACGGGCACTGTGGGGTGGCCCATCAGCCTGGGTGCCATTGCCACTGGCTCCTGCGCACCTGGGAGAGG
CTTACAAGGGCTGTGGCGCCGGCTGCAATAGTGGCGGGAACGTGGATGATTGAGACTGTAGTGGGGCG
GTGGCCTGACCTCCCTCAGCAATAACCCCCCGTGGCACACCCACACCTGAGAACACGGCAGGCAATGG
TGACCAACCCCTCCCACCAGGCCCTGGCTGGGGGCCGCGTCTCCTGAGTGGCTCTGGTGATGGGCGG
CCCCACCTCTGCTGCAGTGGCCTCCCCCTCGGCTCCCTGGACCACCCCTGCATCGCCTATCCCCACAG
AGGGTCCCCGGACCTCACGGCCCCCTGGCCGGGTCTCCTCAGTTCTGAGGGCCCCAGTGAAAAGTGGAG
CCTGGGGGGCCGGAAGGGGCTGGGAGGATCTGACGGGGAGCCAGCCTCAGGGAGCCCCAAAGGAGGTACC
CCCAAATCTCAGGCGCCTCTAGACCTCAGCCTCAGCCTCAGCCTCAGCCTCAGCCCCGATGTCAGCACTG
AGGCCTCACCCCCAGAGCTTCCCAGGACATTCTTGCTTGGACAGCAGTGCCCTGAGAGTGGCACACC
TATGGGTGCCCTGGGCGACTGGCCTGCCCTATTGAGGAGCGTGAGAGCCCGGCAGCCAGCCCTGCTG
GAACACCAGTAC

ACGCGTACGCGGGCCGCTCGAGCAGAACTCATCTCAGAAGAGGATCTGGCAGCAAATGATATCCTGGATT
ACAAGGATGACGACGATAAGGTTTAA

Protein Sequence: >RC226440 representing NM_032223
 Red=Cloning site Green=Tags(s)

MGSQVLQILRQGVWASLTGGWFFDPHQSTFSNCFHLYVWIFLLIFPFLLYMLPPLSMVAGVYCLVVAVI
 FATIKTVNYRLHAMFDQGEIVEKRSSTMGELEEEPAQGDSPNPRDPGEMTVFRKVSSTPPVRCSSQHSV
 FGFNQVSELLPRMEDIPLRDIKELVREQGSNNVIVTSADREMLKLSSEKELIGDLPQTPPGAVPDPPLA
 STDSSEPSPLAGDGAPWSGSSMADTPMSPLLKGSLSQELSKSFLTLTQPDRALVRTSSRREQRRGAGGYQ
 PLDRRGSSEPTPQKAGSSDSCFSGTDRETLSSFSEKTNSTHLDSPPGGPAPEGSDTDPPEAEELPASP
 AGVPSDDTLRSFDTVIGAGTPPLAEPLLVVRPKDLALLRPSKRQPPLRRHSPGRAPRRPPLLEGGFFE
 DEDTSEGSELSPASSLSQRYSSTDSSTSCYSPSSRGAAGGPRRRAPHGAEETAVPPKRPYGTQR
 TPSTASAKTHARVLSMDGAGGDVLRPLAGCKAELEAQVGEQAASEPVVLPAAARRGPAANQPGWRGEL
 QEEGAVGGAAEETGRRDRSSSVRRQTQAIIRRRHNAGSNTPPASMGSPPSSLQEAQRGRAASHSRALTL
 SALHFASLLLRAGANVHEACTFDDTSEGAVHYFYDESGVRRSYTFGLAGGGYENPVGQQGEQTANGAW
 DRHSHSSSFHSADVPEATGGLNLLQPRPVVLLQGMQVRRVPLEIPEEQTLMEEAPRAQHSYKYWLLPGRW
 TSVRYERLALLALLDRTRGVLENIFGVGLSSVAFVLYLGLLLKGFFTDIWVVFQFCLVIASCQYSLKSVQ
 PDAASPMHGHNVVIAYSRPVYFCICCLLWLLDALGSAQFPFVSLYGLTLFSAFFFACARDVATVFTLC
 FPFVFLGLLQVNTCLMYLLEQIDMHGFGGTAATSPLTAVFSLSRSLAAALLYGFCLGAIKTPWPEQH
 VPVLFVFCGLLVALSYHLRQSSDPTVLSLIRSKLFPPELEERSLETARAEPDPLPDKMRQSVREVLH
 SDLVMCVVIAVLTFAISASTVFIALKSVLGFVLYALAGAVGFFTHYLLPQLRKLQVWFLSOPVLPKLEY
 SQYEVGAAQVMWFEKLYAGLQCVKYL IYPAVVLNALTVAHTVVSHDPKYCFYCRALLMTVAGLKLRL
 SAFCCPPQQYLTLAFTVLLFHFDPRLSQGFLLDYFLMSLLCSKLDLLYKLRVLTYYIAPWQITWGSF
 HAFAPQFAVPHSAMLVQALLSGLFSTPLNPLLSAVFIMSYARPLKFWERDYNTKRVDSNTRLVTQLD
 RNPAGADDNLSIFYEHLTRSLQHTLQGLVLRWGNYPGDCFLASDYLNALVHLIEVGNGLVTFQLR
 GLEFRGTYCQREVEAITEGVEEDEGCCCEPGHLPRVLSFNAAFQQRWLAWEVTASKYVLEGYSDNN
 AASMLQVFDLRKILITYYKSI IYVSRSPKLEVWLSHEGITAALRPVRVPGYADSDPTFSLSVDEYDL
 RL SGLSLPSFCVHLEWIQYCASRRSQVDQDWSPLVTLCFGLCVLGRRALGTASHMSASLEPFYGL
 HALFKGDFRITSPRDEWVADMDLLHRVVAPGVRMALKLHQDHF TSPDEYEEPAALYDAIAANEERLVIS
 HEGDPAWRSAILSNTPSLLALRHVLDASDEYKIIMLNRRHL SFRVIKVNRECVRGLWAGQQQELVFLRN
 RNPERGSIQNAKQALRNMINSSCDQPLGYPIYVSPLTTSLAGSHPQLRALWGGPISLGAIAHWLLRTWER
 LHKGCGAGCNSGGNVDDSDCSGGGLTSLSNNPPVAHPTPENTAGNGDQPLPPGPGWGRSSLGSGDGR
 PPPLLQWPPPRLPGPPPASP IPITEGPRTSRPPGGLLSSEGPSGKWSLGGKGLGGSDGEPASGSPKGGT
 PKSQAPLDL SLSL SLPDVSTEASPPRASQDIPCLDSSAPESGTPMGALGDWPAPIEERESPAAPLL
 EHQY

TRTRPLEQKLISEEDLAANDILDYKDDDDKV

Chromatograms: https://cdn.origene.com/chromatograms/mk8031_g10.zip

Restriction Sites: SgfI-MluI

Cloning Scheme:


ACCN: NM_032223

ORF Size: 6102 bp

OTI Disclaimer: The molecular sequence of this clone aligns with the gene accession number as a point of reference only. However, individual transcript sequences of the same gene can differ through naturally occurring variations (e.g. polymorphisms), each with its own valid existence. This clone is substantially in agreement with the reference, but a complete review of all prevailing variants is recommended prior to use. [More info](#)

OTI Annotation: This clone was engineered to express the complete ORF with an expression tag. Expression varies depending on the nature of the gene.

Components: The ORF clone is ion-exchange column purified and shipped in a 2D barcoded Matrix tube containing 10ug of transfection-ready, dried plasmid DNA (reconstitute with 100 ul of water).

Reconstitution Method:

1. Centrifuge at 5,000xg for 5min.
2. Carefully open the tube and add 100ul of sterile water to dissolve the DNA.
3. Close the tube and incubate for 10 minutes at room temperature.
4. Briefly vortex the tube and then do a quick spin (less than 5000xg) to concentrate the liquid at the bottom.
5. Store the suspended plasmid at -20°C. The DNA is stable for at least one year from date of shipping when stored at -20°C.

RefSeq: [NM_032223.2](#), [NP_115599.2](#)

RefSeq ORF: 6105 bp

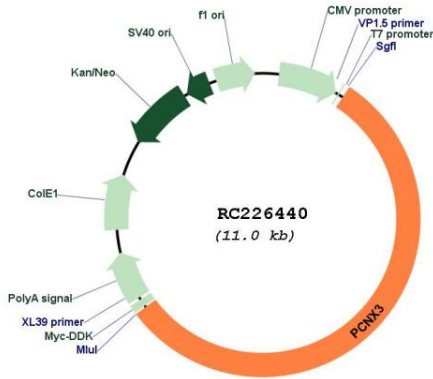
Locus ID: 399909

UniProt ID: [Q9H6A9](#)

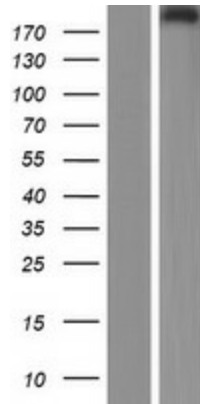
Cytogenetics: 11q13.1

MW: 221.9 kDa

Product images:



Circular map for RC226440



Western blot validation of overexpression lysate (Cat# [LY429800]) using anti-DDK antibody (Cat# [TA50011-100]). Left: Cell lysates from untransfected HEK293T cells; Right: Cell lysates from HEK293T cells transfected with RC226440 using transfection reagent MegaTran 2.0 (Cat# [TT210002]).