

Product datasheet for RC226434

Laminin alpha 4 (LAMA4) (NM_001105206) Human Tagged ORF Clone

Product data:

Product Type:	Expression Plasmids
Product Name:	Laminin alpha 4 (LAMA4) (NM_001105206) Human Tagged ORF Clone
Tag:	Myc-DDK
Symbol:	Laminin alpha 4
Synonyms:	CMD1Jj; LAMA3; LAMA4*-1
Mammalian Cell Selection:	Neomycin
Vector:	pCMV6-Entry (PS100001)
E. coli Selection:	Kanamycin (25 ug/mL)
ORF Nucleotide Sequence:	>RC226434 representing NM_001105206 Red=Cloning site Blue=ORF Green=Tags(s)

TTTTGTAATACGACTCACTATAGGGCGGCCGGAATTCGTCGACTGGATCCGGTACCGAGGAGATCTGCC
GCCCGCATCGCC

ATGGCTTTGAGCTCAGCCTGGCGCTCGGTTCTGCCTCTGTGGCTCCTCTGGAGCGCTGCCTGCTCCCGCG
CCGCGTCCGGGGACGACAACGCTTTTCTTTTGACATTGAAGGGAGCTCAGCGTTGGCAGGCAAGACCC
GCCTGAGACGAGCGAACCCCGCTGGCTCTGGACGCCTGCCGCCTGCGGCCGAGAAATGCAATGCTGGA
TTCTTTCACACCCTGTCGGGAGAATGTGTGCCCTGCGACTGTAATGGCAATTCACAGAGTGTGGACG
GCTCAGGATACTGTGTGACTGCCAGCGGAACACAACAGGAGAGCACTGTGAAAAGTGTCTGGATGGTTA
TATCGGAGATTCCATCAGGGGAGCACCCCAATTCTGCCAGCCGTGCCCTGTCCCCTGCCCACTTGGCC
AATTTTGCAGAATCCTGTATAGGAAAAATGGAGCTGTTGCGTGCATTTGTAACGAAAAATTATGCTGGAC
CTAACTGTGAAAGATGTGCTCCCGGTTACTATGAAAAACCCCTTACTCATTGGAAGCACCTGTAAGAAATG
TGACTGCAAGTGGAAATTCAGATCCCAACCTGATCTTTGAAGATTGTGATGAAGTCACTGGCCAGTGTAGG
AATTGCTTACGCAACACCACCGGATTCAAGTGTGAACGTTGCGCTCCTGGCTACTATGGGACGCCAGGA
TAGCCAAGAAGTGTGCACTGCAACTGCGGGGGAGGCCCATGTGACAGTGAACCGGAGAATGCTTGGG
AGAAGGTTTTGAACCCCTACAGGCATGGACTGCCCAACCATAAGCTGTGATAAGTGCCTGCTGGACCTG
ACTGATGCACTGCGGTTAGCAGCGCTCTCCATCGAGGAAGGCAAATCCGGGGTGGCTGAGCGTATCCTCTG
GGCCCGCCTCATAGGCACGTGAATGAAATCAACGCCACCATCTACCTCCTCAAAAACAAAATTTGTCAGA
AAGAGAAAACCAATACGCCCTAAGAAAAGATACAAATCAACAATGTGAGAACACGATGAAAAGCCTTCTG
TCTGACGTAGAGGAATTAGTTGAAAAGGAAAAATCAAGCCTCCAGAAAAGGACAACCTGTTGAGAAGGAAA
GCATGGACACCATTAACCACGCAAGTCACTGGTAGAGCAAGCCCATGATATGAGGGATAAAATCCAAGA
GATCAACAACAAGATGCTCTATTATGGGAAGAGCATGAACTTAGCCCAAGGAAATCTCTGAGAAGCTG
GTGTTGGCCAGAAGATGCTTGAAGAGATTAGAAGCCGTAACCATTTTTACCCAACGGGAGCTCGTGG
ATGAGGAGGCAGATGAGGCTTACGAACTACTGAGCCAGGCTGAGAGCTGGCAGCGCTGCACAATGAGAC
CCGCACTCTGTTCTGTCGTCCTGGAGCAGCTGGATGACTACAATGCTAAGTTGTCAGATCTCCAGGAA



[View online »](#)

GCACTTGACCAGGCCCTTA ACTATGTCAGGGATGCCGAAGACATGAACAGGGCCACAGCAGCCAGGCAGC
 GGGACCATGAGAAACAACAGGAAAGAGTGAGGGAACAAATGGAAGTGGTGAACATGTCTCTGAGCACATC
 TGCGGACTCTCTGACAACACCTCGTCTAACTCTTTCAGAACTTGATGATATAATAAAGAATGCGTCAGGG
 ATTTATGCAGAAATAGATGGAGCCAAAAGTGAAC TACAAGTAAAATCTAACCTAAGTAACTCAGCC
 ATGATTTAGTCCAAGAAGCTATTGACCATGCACAGGACCTTCAACAAGAAGCTAATGAATTGAGCAGGAA
 GTTGCACAGTTCCAGATATGAACGGGCTGGTACAGAAGGCTTTGGATGCATCAAATGTCTATGAAAAATTT
 GTTAATTTAGTTAGTGAAGCCAATGAAACAGCAGAATTTGCTTTGAACACCACTGACCGAATTTATGATG
 CGGTGAGTGGGATTGATACTCAAATCATTACCATAAAGATGAAAGTGAGAACCTCTCAATCAAGCCAG
 AGAACTGCAAGCAAAGGCAGAGTCTAGCAGTGATGAAGCAGTGGCTGACACTAGCAGGCGTGTGGGTGGA
 GCCCTAGCAAGGAAAAGTGCCCTTAAAACCAGACTCAGTGATGCCGTTAAGCAACTACAAGCAGCAGAGA
 GAGGGGATGCCAGCAGCGCCTGGGGCAGTCTAGACTGATCACCGAGGAAGCCAACAGGACGACGATGGA
 GGTGCAGCAGGCCACTGCCCCATGGCCAACAATCTAACCACTGGTACAGAACTCTTCAACATTTTGAC
 TCTTCTGCTTACAACACTGCAGTGAACCTGCTAGGGATGCAGTAAGAAATCTGACCGAGGTTGCCCTC
 AGCTCCTGGATCAGCTTCGTACGGTTGAGCAGAAGCGACCTGCAAGCAACGTTTCTGCCAGCATCCAGAG
 GATCCGAGAGCTCATTGCTCAGACCAGAAGTGTGCCAGCAAGATCCAAGTCTCCATGATGTTTGATGGC
 CAGTCAGCTGTGGAAGTGCCTCGAGAACCAGTATGGATGACTTAAAGGCCCTTACGTCCTGAGCCCTGT
 ACATGAAACCCCTGTGAAGCGGCCGAACTGACCGAGACTGCAGATCAGTTTATCCTGTACCTCGGAAG
 CAAAAACGCCAAAAAGAGTATATGGGTCTTGCATCAAAAAATGATAATCTGGTATACGTCTATAATTTG
 GAACTAAAGATGTGGAGATCCCTGGACTCCAAGCCGTCAGTTTCTGGCCTGCTTACTTCAGCATTG
 TCAAGATTGAAAGGGTGGGAAAACATGGAAGGTGTTTTAACAGTCCCGAGTCTAAGTAGCACAGCAGA
 GGAAAAGTTCATTAAGGGGGGAAATTTCCGGGAGATGACTCTCTGCTGGACCTGGACCTGAGGACACA
 GTGTTTTATGTTGGTGGAGTGCCTTCAACTTCAAGCTCCCTACCAGCTTAAACCTGCCTGGCTTTGTTG
 GTACCTGGAAGTGGCCACTTTGAATAATGATGTGATCAGCTTGTACAACCTTAAAGCACATCTATAATAT
 GGACCCCTCCACATCAGTGCCATGTGCCGAGATAAGCTGGCCTTCACTCAGAGTCGGGCTGCCAGTTAC
 TTCTTCGATGGCTCCGGTTATGCCGTGGTGAAGACATCAACAAGGAGAGGGAAAATTTGGTCAGGTGACTC
 GCTTTGACATAGAAGTTCGAACACCAGCTGACAACGGCCTTATTCTCCTGATGGTCAATGGAAGTATGTT
 TTTGACTGGAATGCGCAATGGTTACCTACATGTGTTCTATGATTTTGGATTGAGCGTGGCCCTGTG
 CATCTTGAAGATACGTTAAAGAAAGCTCAAATTAATGATGCAAAATACCATGAGATCTCAATCATTACC
 ACAATGATAAGAAAATGATCTTGGTAGTTGACAGAAGGCATGTCAAGAGCATGGATAATGAAAAGATGAA
 AATACCTTTACAGATATACATTGGAGGAGCTCCTCCAGAAATCTTACAATCCAGGGCCCTCAGAGCA
 CACCTTCCCTAGATATCAACTCAGAGGATGCATGAAGGGCTTCCAGTCCAAAAGAAGGACTTCAATT
 TACTGGAGCAGACAGAAACCCTGGGAGTTGGTTATGGATGCCAGAAAGACTCACTTATATCTCGCAGAGC
 ATATTTCAATGGACAGAGCTTATTGCTTCAATTCAGAAAATATCTTTCTTTGATGGCTTTGAAGGAGGT
 TTTAATTTCCGAACATTACAACCAAATGGGTTACTATTCTATTATGCTTCAGGGTCAGACGTGTTCTCCA
 TCTCACTGGATAATGGTACTGTCATCATGGATGTAAGGGGAATCAAAGTTCAGTCAGTAGATAAGCAGTA
 CAATGATGGGCTGTCCCCTTCCGATAGCTCTGTCTCACCCACAAGATATGAACTGATAGTAGATAAA
 AGCAGAGTTGGGAGTAAAGATCTACCAAAGGGGAAAATAGAACAGACACAAGCAAGTGAAGAAAGTTTTT
 ACTTCGGTGGCTACCAATCAGTGCTCAGTATGCTAATTTCACTGGCTGCATAAGTAATGCCTACTTTAC
 CAGGGTGGATAGAGATGTGGAGGTTGAAGATTTCCAACGGTATACTGAAAAGTCCACACTTCTCTTTAT
 GAGTGTCCCATGAGTCTTACCATTGTTTCTCCTCCATAAAAAAGGAAAAAATTTATCCAAGCTAAAG
 CAAGTCAGAATAAAAAAGGAGGGGAAAAGTAAAGATGCACCTTCATGGGATCCTGTTGCTCTGAAACTCCC
 AGAGCGGAATACTCCAAGAACTCTCATTGCCACCTTTCCAACAGCCCTAGAGCAATAGAGCAGCCCTAT
 CAATATGGAGGAACAGCCAACAGCCGCAAGAGTTTGAACACTTAAAAGGAGATTTTGGTCCAAATCTC
 AGTTTTCCATTCTGCTGAGAACTCGTTCCTCCCATGGCATGATCTTCTATGTCTCAGATCAAGAAGAGAA
 TGACTTCATGACTCTATTTTGGCCATGGCCGCTTGGTTTACATGTTTAAATGTTGGTCACAAAAAACTG
 AAGATTAGAAGCCAGGAGAAAATACAATGATGGCCTGTGGCATGATGTGATATTTATCGAGAAAGGAGCA
 GTGGCCGACTGGTAATTGATGGTCTCCGAGTCTAGAAGAAAGTCTTCTCCTACTGAAGCTACCTGGAA
 AATCAAGGGTCCCATTTATTTGGGAGGTGTGGCTCCTGGAAGGGCTGTGAAAAATGTTGAGATTAACCTC
 ATCTACAGTTTTAGTGGCTGTCTCAGCAATCTCCAGCTCAATGGGGCTCCATCACCTCTGCTTCTCAGA
 CATTGAGTGTGACCCCTTGTCTTGAAGGCCCATGGAAACAGGAACTTACTTTTCAACAGAAAGGAGGATA
 CGTGGTTCTAGATGAATCTTTCAATATTGGATTGAAGTTTGAATTTGCAATTTGAAGTCCGTCAGGAAAGC
 AGTTCGGAAACCCTGGTCCACGGCCACAGTGTCAATGGGGAGTACCTAAATGTTCCATGAAAAATGGAC

AGGTCATAGTGAAAGTCAATAATGGCATCAGAGATTTTTCCACCTCAGTTACACCCAAGCAGAGTCTCTG
 TGATGGCAGATGGCACAGAATTACAGTTATTAGAGATTCTAATGTGGTTCAGTTGGATGTGGACTCTGAA
 GTGAACCATGTGGTTGGACCCCTGAATCCAAAACCAATTGATCACAGGGAGCCTGTGTTTGTGGAGGTG
 TTCCAGAATCTCTACTGACACCACGCTTGGCCCCAGCAAACCC TTCACAGGCTGCATACGCCACTTTGT
 GATTGATGGACACCCAGTGAGCTTCAGTAAAGCAGCCCTGGT CAGCGGCGCCGTAAGCATCAACTCTGT
 CCAGCAGCC

ACGCGTACGCGGCGCTCGAGCAGAAACTCATCTCAGAAGAGGATCTGGCAGCAAATGATATCCTGGATT
 ACAAGGATGACGACGATAAGGTTTAA

Protein Sequence:

>RC226434 representing NM_001105206
 Red=Cloning site Green=Tags(s)

MALSSAWRSVLPWLLWSAACSRASAGDDNAFFPIEIESSAVGRQDPPETSEPRVALGRLPPAAEKCNA
 FFHTLSGECVPCDCNNGSNECLDGSYCVHCQRNTTGEHCEKCLDGYIGDSIRGAPQFCQPCPLPHLA
 NFAESCYRKNGAVRVCICNENYAGPNCERCAPGYGNPLLIIGSTCKKDCSGNSDPNLI FEDCDEVGQCR
 NCLRNTTGFKCERCAPGYGDARIKNCVAVCNCGGGPCDSVTGECELEEFEPPTGMDPTISCDKCVWDL
 TDALRLAAL SIEEGKSGVL SVSSGAAHRHVNEINATIYLLKTKL SERENQYALRKIQINNAENTMKSLL
 SDVEEL VEKENQASRKGQLVQKESMDTINHASQLVEQAHDMDKIQEINNKM LYGEEHELSPKEISEKL
 VLAQKMLEEIRSROPFFTQREL VDEEADAEYELL SQAESWQRLHNETRTLFPVVLEQLDDYNAKLSDLQE
 ALDQALNYVRDAEDMNRATAARQRDHEKQERVREQMEVVMNSLST SADS LTPRLTL SELDDI IKNASG
 IYAEIDGAKSELQV KLSNL SNL SHDLVQEAIDHAQDLQEQEANELSRKLHSSDMNGLVQKALDASNVYENI
 VNYVSEANETAEFALNTTDRIYDAVSGIDTQIIYHKDESENLLNQARELQAKAESSSDEAVADTSRRVGG
 ALARKSALKTRLSDAVKQLQAAERGDAQRLGQSRLITEANRTTMEVQATAPMANNLTNWSQNLQHF
 SSAYNTAVNSARDAVRNLTEVVPQLLDQLRVEQKRPASNVSASIQRIRELI AQTRSVASKIQVSMFDFG
 QSAVEVHSRTSMDLKAFTSLSLYMKPPVKRPELTETADQF ILYLGSKNAKKEYMGLAIKNDNLVYVYNL
 GTKDVEIPLDSKPVSSWPAYFSIVKIERVKGKGVFLTVPSLSSTAEKFIKKGEFGSDSLDLDPEDT
 VFYVGGVPSNFKLPTSLNLPGFVGCELEATLNNDVVISL YNFKHIYNM DPSTSVPCARDKLAFTQSRAASY
 FFDGSGYAVVRDITRRGKFGQVTRFDIEVTRPADNGLILLMVNGSMFFRLEMRNGYLHVFDYDFGSGGPV
 HLEDTLKKAQINDAKYHEISIIYHNDKMKILVDRRHVKSM DNEKMKIPFTDIYIGGAPPEILQSRALRA
 HLPDLINFRGCMKGFQFQKDFNLL EQETLGVGYGCPEDSLISRRAYFNGQSF IASIQKISFDFGFE
 FNFRTLQPNGLLFYYASGSDVFSISLDNGTVIMDVKGIKVSVDKQYNDGLSHFV I SSVSPTRYELIVDK
 SRVGSKNPTKGI EQTQASEKFFYGGSPISAQYANFTGCISNAYFTRVDRDVEEDFQRYTEKVHTSLY
 ECPIESSPLFLLHKKGNL SKPKASQNKGGKSKDAPSWDPVALKLPERNTPRNSHCHLSNSPRAIEHAY
 QYGGTANSRQEF EHLKGF GAKSQFSIRLRTRSSHGMIFVYSDQEENDFMTLFLAHGRLVYMFNVGHKLL
 KIRSQEKYNDGLWHDVIFIRERSGRLVIDGLRVLEESLPPEATWKIKGPIYLGAVAPGKAVKNVQINS
 IYSFSGCLSNLQLNGASITSASQTF SVTPCFEGPMETGT YFSTEGGYVVLDESFNIGLKF EIAFEVRPRS
 SSGTLVHGHSVNGEYLVNVMKNGQVIKVNNGIRDFSTSVTPKQSLCDGRWHRITVIRDSNVVQLD VDSE
 VNHVVGPLNPKPIDHREPVFVGGVPESLLTPRLAPSKPFTG CIRHFVIDGHPVSF SKAALVSGAVSINSC
 PAA

TRTRPLEQKLI SEEDLAANDILDYKDDDDKV

Chromatograms:

https://cdn.origene.com/chromatograms/mk8006_a03.zip

Restriction Sites:

Sgfl-Mlul

Cloning Scheme:


ACCN: NM_001105206

ORF Size: 5469 bp

OTI Disclaimer: The molecular sequence of this clone aligns with the gene accession number as a point of reference only. However, individual transcript sequences of the same gene can differ through naturally occurring variations (e.g. polymorphisms), each with its own valid existence. This clone is substantially in agreement with the reference, but a complete review of all prevailing variants is recommended prior to use. [More info](#)

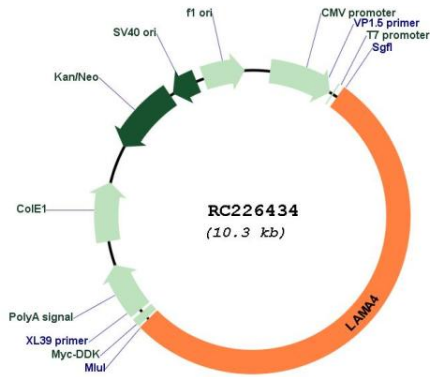
OTI Annotation: This clone was engineered to express the complete ORF with an expression tag. Expression varies depending on the nature of the gene.

Components: The ORF clone is ion-exchange column purified and shipped in a 2D barcoded Matrix tube containing 10ug of transfection-ready, dried plasmid DNA (reconstitute with 100 ul of water).

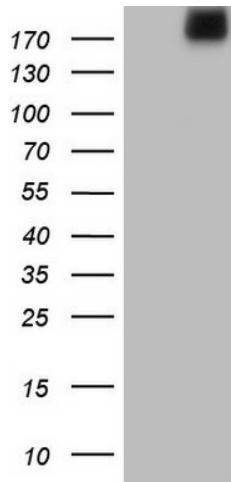
- Reconstitution Method:**
1. Centrifuge at 5,000xg for 5min.
 2. Carefully open the tube and add 100ul of sterile water to dissolve the DNA.
 3. Close the tube and incubate for 10 minutes at room temperature.
 4. Briefly vortex the tube and then do a quick spin (less than 5000xg) to concentrate the liquid at the bottom.
 5. Store the suspended plasmid at -20°C. The DNA is stable for at least one year from date of shipping when stored at -20°C.

RefSeq:	NM_001105206.1 , NP_001098676.1
RefSeq ORF:	5472 bp
Locus ID:	3910
UniProt ID:	Q16363
Cytogenetics:	6q21
Protein Families:	Druggable Genome, Secreted Protein
Protein Pathways:	ECM-receptor interaction, Focal adhesion, Pathways in cancer, Small cell lung cancer
MW:	202.52 kDa
Gene Summary:	<p>Laminins, a family of extracellular matrix glycoproteins, are the major noncollagenous constituent of basement membranes. They have been implicated in a wide variety of biological processes including cell adhesion, differentiation, migration, signaling, neurite outgrowth and metastasis. Laminins are composed of 3 non identical chains: laminin alpha, beta and gamma (formerly A, B1, and B2, respectively) and they form a cruciform structure consisting of 3 short arms, each formed by a different chain, and a long arm composed of all 3 chains. Each laminin chain is a multidomain protein encoded by a distinct gene. Several isoforms of each chain have been described. Different alpha, beta and gamma chain isomers combine to give rise to different heterotrimeric laminin isoforms which are designated by Arabic numerals in the order of their discovery, i.e. alpha1beta1gamma1 heterotrimer is laminin 1. The biological functions of the different chains and trimer molecules are largely unknown, but some of the chains have been shown to differ with respect to their tissue distribution, presumably reflecting diverse functions in vivo. This gene encodes the alpha chain isoform laminin, alpha 4. The domain structure of alpha 4 is similar to that of alpha 3, both of which resemble truncated versions of alpha 1 and alpha 2, in that approximately 1,200 residues at the N-terminus (domains IV, V and VI) have been lost. Laminin, alpha 4 contains the C-terminal G domain which distinguishes all alpha chains from the beta and gamma chains. The RNA analysis from adult and fetal tissues revealed developmental regulation of expression, however, the exact function of laminin, alpha 4 is not known. Tissue-specific utilization of alternative polyA-signal has been described in literature. Alternative splicing results in multiple transcript variants encoding distinct isoforms. [provided by RefSeq, Aug 2011]</p>

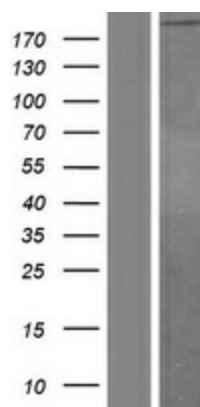
Product images:



Circular map for RC226434



HEK293T cells were transfected with the pCMV6-ENTRY control (Cat# [PS100001], Left lane) or pCMV6-ENTRY LAMA4 (Cat# RC226434, Right lane) cDNA for 48 hrs and lysed. Equivalent amounts of cell lysates (5 ug per lane) were separated by SDS-PAGE and immunoblotted with anti-LAMA4(Cat# [TA805721]). Positive lysates [LY426227] (100ug) and [LC426227] (20ug) can be purchased separately from OriGene.



Western blot validation of overexpression lysate (Cat# [LY426227]) using anti-DDK antibody (Cat# [TA50011-100]). Left: Cell lysates from untransfected HEK293T cells; Right: Cell lysates from HEK293T cells transfected with RC226434 using transfection reagent MegaTran 2.0 (Cat# [TT210002]).