

Product datasheet for **RC226429**

RGPD6 (NM_001123363) Human Tagged ORF Clone

Product data:

Product Type: Expression Plasmids
Product Name: RGPD6 (NM_001123363) Human Tagged ORF Clone
Tag: Myc-DDK
Symbol: RGPD6
Synonyms: RanBP2L1; RanBP2L2; RGP6; RGPD7
Mammalian Cell Selection: Neomycin
Vector: pCMV6-Entry (PS100001)
E. coli Selection: Kanamycin (25 ug/mL)
ORF Nucleotide Sequence: >RC226429 representing NM_001123363
Red=Cloning site Blue=ORF Green=Tags(s)

TTTTGTAATACGACTCACTATAGGGCGGCCGGAATTCGTCGACTGGATCCGGTACCGAGGAGATCTGCC
GCCCGATCGCC

ATGAGGCGCAGCAAGGCCGATGTGGAGCGGTACGTCGCCTCGGTGCTGGGTCTCACCCCGTCGCCTCGAC
 AGAAGTCAATGAAAGGATTCTATTTTGCAAAGCTGTATTATGAAGCTAAAGAATATGATCTTGCTAAAAA
 ATACATATGTACTTACATTAATGTGCAAGAGAGGGATCCCAAAGCTCACAGATTTCTGGGTCTTCTTTAT
 GAATTGGAAGAAAACACAGAGAAAGCCGTTGAATGTTACAGGCGTTCAGTGAATTAACCCAACACAAA
 AAGATCTTGTGTTGAAGATTGCAGAATTGCTTTGTA AAAATGATGTTACTGATGGAAGAGCAAAACTG
 GGTCGAAAGAGCAGCAAACTTTTCCCAGGAAGTCCTGCAATTTATAAACTAAAGGAACAGCTTCTAGAT
 TGTGAAGGTGAAGATGGATGGAATAAACTTTTGACTTGATTCAGTCAGAACTTTATGTAAGACCTGATG
 ACGTCCATGTGAACATCCGGCTAGTGGAGTTGTATCGCTCAACTAAAAGATTGAAGGATGCTGTGGCCCA
 CTGCCATGAGGCAGAGAGGAACATAGCTTTGCGTTCAAGTTTAGAGTGGAAATTCGTGTGTTGTACAGACC
 CTTAAGGAATATCTGGAGTCTTTACAGTGTGGAGTCTGATAAAAAGTACTGGCAAGCAACCAATACAG
 ACTTACTGCTGGCCTATGCTAATCTTATGCTTCTTACGCTTTCCACTAGAGATGTGCAGGAAAATAGAGA
 ATTACTGGAAAGTTTTGATAGTGTCTTCAGCTGCGAAATCTTCTTTGGGTGGAATGATGAAGTGTCA
 GCTACTTTCTTAGAAATGAAAGGACATTTCTATATGATGCTGGTCTCTGCTCTTGAAGATGGGTCAGC
 ATGGTAATAATGTTCAATGGCGAGCTCTTCTGAGCTGGCTGCATTGTGCTATCTCATAGCATTTTCAGGT
 TCCAAGACCAAAGATTAATTAAGAGAAGTAAAGCTGGACAAAATCTGCTGGAATGATGGCCTGTGAC
 CGACTGAGCCAATCAGGGCACATGTTGCTAAGCTTAAGTCGTGGCAAGCAAGATTTCTAAAAGAGGTTG
 TTGAAACTTTTGCCAACAAAATTGGGCAGTCTGCGTTATATGATGCTCTGTTTTCTAGTCAGTCACCTAA
 GGATACATCTTTTCTGGTAGCGATGATATTGAAAAAATTGATGTACAAGAACCAGAGCTTGAAGATTTG
 GCTAGATACGATGTTGGTGTCTTTCGAGCACATAATGGTAGTCTTCAGCATCTTACTTGGCTTGGCTTAC
 AGTGAATTCATTGCCTGCTTACCTGGAATCCGAAAATGGCTAAAACAGCTTTCCATCGTTTGCCCA
 TGAACCTCAAGCTTGAACAAAATGCGCCTGAATCAATATGATTTTAGATCTTGAAGTATTTCTCTT



[View online »](#)

GGAGTAGTATATACCAGCCACTTACAATTAAGGAGAAATGTAATTCTCACCATAGCTCCTATCAGCCGT
TATGCCTGCCCTTCTCTGTGTAAACAGCTTTGTACAGAAAGACAAAACTTGGTGGGATGCGGTTTG
TACTCTGATTCACAGAAAAGCAGTACCTGGAACTTGGCAAAATTGAGACTTCTAGTTTACAGATGAAATA
AACACTTAAGAGCCCAGGAAAAACATGGCCTTCAACCTGCTCTGCTGTACATTGGGCAAAATACCTTC
AGAAAACGGGCAGCGGTCTAATCTTTTTATGGTCAACTAGAATACATAGGGAAGTGTTCATTATTG
GAAGAAAGTTTTGCCATTGTTGAAGATAATAAAGAAGAACAGTATCTGAACTATTGATCCTCTGTTT
AAACATTTTCATAGTGTAGACATTCAGGCATCAGAAATTGTTGAATATGAAGAAGACGCACACATACTT
TTGCTATGTTGGATGCAGTAAATGGAAATATAGAAGATGCTGTGACTGCTTTTGAATCTATAAAAAAGTGT
TGTTTCTATTGGAATCTTGCACTGATTTTTACAGGAAGGCAGAAGACATTGAAAAATGATGCCCTTTCT
CCTGAAGAACAAGAAGAAATGCAGAAATTATCTGACAAAGACCAGGGACTACCTAATAAAGATTATAGATG
ACGGTGATTCAAATCTTTCAGTGGTCAAGAAATGCTGTGCCCTGGAGTCTGTAAAACAGATGCTTAA
TTCAGTCATGCAGGAACTCGAAGACTATAGTGAAGGAGTCTCTCTATAAAAAATGGTCTTTTGCAGAA
GCAGATTCAGAAATAAACATTCTACACCGTCTCCTACCAATATTCACTATCACCAGTAAAAGTTACA
AGTATTCTCCGAAACACCCTCGATGGACAGAAGATCGGAATCTTTACTGAATATGATTTGCCAACA
AGTAGAGGCCATTAAGAAAGAAATGCAGGAGTTGAACTAAATAGCAGTAAGTCAGCATCCCGTCATCGT
TGGCCACAGAGAATTATGGACCAGACTCGGTGCCTGATGGATATCAGGGGTACAGACATTTTCATGGGG
CTCCACTAACAGTTGCAACTACTGGCCCTTCAGTATATTATAGTCAGTCACCAGCATATAATCCCAGTA
TCTTCTCAGACCAGCAGCTAATGTTACTCCACAAAGGGTCTTCTAATACAGAAATTAAGTCAACCAAA
GAAGGATTTTCCATCCCTGTGTCTGCTGATGGATTTAAATTTGGCATTTCGGAACCAGGAAATCAAGAAA
AGAAAAGGGAAAAGCCTCTTGAAAAATGATACTGGCTTCCAGGCTCAGGATATTAGTGGCCGGAAGAGGG
CCGTGGTGTGATTTTTGGCCAAACAAGTAGCACTTTTACATTTGCAGATGTTGCAAAATCAACTCAGGA
GAAGGATTCAGTTTGGCAAAAAGACCTCAATTTCAAGGGATTTTTCAGGTGCTGGAGAAAAATTTCT
CATCACGATACGGTAAAATGGCAATAAAGCAACACTTCCGGTGCATTTGAGAAAGATGATGATGCCTA
TAAGACTGAGGACAGCGATGCATCCATTTTGAACCAAGTATTCAAATGCCTGAAAAAGTGAATTTGTA
ACAGGAGAAGAAGGTGAAAAAGTTCTGTATTACAGGGGGTAAAACTATTTAGATTTGATGCTGAGGTAA
GGCAGTGGAAAGAAAGGGCTTGGGGAACCTAAAAATTTCTCAAAAACGAGGTCAATGGCAAACTAAGAA
GCTGATGCGAAGAGAACAAGTACTAAAAGTGTGTGCTAATCATTGGATAACGACTACAATGAACCTGAAG
CCCCTCTGGATCAGATAGAGCATGGATGTGGTCAAGCAGTATTTCTCTGACGGTGTGCCAACTAG
AGCGGTTGGCAGCAAAATTTAAAACACCAGAGCTGGCTGAAGAATTAAGCAGAAATTTGAGGAATGCCA
GCGGCTTCTGTTAGACATACCCTTCAACTCCCATAAACTTGTAGATACTGGCAGAGCTGCCAAGTTA
ATACAGAGAGCTGAAGAAATGAAGAGTGGACTGAAAGATTTCAAAACATTTTGGCAAAATGATCAACAA
AAGTCACTGAGGAAGAAAATAAGGGTTCAGGTACAGGTGCGGCCGTGCCTCAGACACAACAATAAAACC
CAATGCTGAAAACACTGGGCCACATTAGAATGGGATAACTATGACTTAAGGGAAGATGCTTTGGATGAT
AGTGTCAGTAGTACGTACATGCTTCTCCATTGGCAAGTAGCCCTGTGAGAAAAATCTTTCCGCT
TTGATGAGTCAACAACAGGATCTAACTTCAAGTTTAAATCTGCTTTGAGTCTATCTAAGTCTCCTGCCAA
GTTGAATCAGAGTGGGACTTCAAGTTGGCACTGATGAAGAATCTGTTGTTACTCAAGAAGAAGAGAGAGAT
GGACAGTACTTTGAACCTGTTGTTCTTACCTGATCTAGTTGAAGTATCCAGTGGTGGAGAAAAAGAAC
AAGTTGTTTTAGTCACAGGGCAGAAATCTACAGATATGATAAAGATGTTGGTCAATGAAAGAAAGGGG
CATTGGTGATATAAAGATTTTACAGAATTATGATAATAAGCAAGTTCGTATAGTGATGAGAAAGGACCAA
GTATTAATAACTTTGTGCCAATCACAGAATAACTCCAGACATGAGTTTGCAAAAATGAAAGGGACAGAAA
GAGTATGGGTGTGGACTGCATGTGATTTTGCAGATGGAGAAAGAAAGTAGAGCATTTAGCTGTTGTTTT
TAAACTACAGGATGTTGCAGACTCGTTTAAAGAAATTTTTGATGAAGCAAAAACAGCCAGGAAAAAGAT
TCTTTGATAACACCTCATGTTTCTCGTCAAGCACTCCCAGAGAGTACCATGTGGCAAAATTTGCTGTAG
CTATATTAGAAGAAACCACAAGAGAGAGGACAGATGTTATTCAGGGTGTGATGTAGCAGATGCAGCTTC
AGAAGTTGAAGTGTCTAGCACATCTGAAACAACAACAAAAGCAGTGGTTTCTCTCCAAAGTTTGTATTT
GTTTCAGAGTCTGTTAAAAGAATTTTTAGTAGTAAAAATCAAAACCATTTGATTTGGCAACAGTTCTG
CCACTGGGCTTTGTTTGGATTTAGTTTTAATGCACCTTTGAAAAGTAAACAATAGTGAACTAGTTCAGT
AGCCCAGAGTGGATCTGAAAGCAAAGTGGAACTAAAAATGTGAAGTGTCAAAGAACTCTGATATCGAA
CAGTCTTCAGATAGCAAAGTCAAAAATCTCTGCTTCTTTCCAACGGAAGAATCTTCAATCAACTACA
CATTTAAAACACCAGAAAAGGAGCCTCCATTATGGCATGCTGAATTTACCAAAGAAGAAATGGTTTCAGAA
GCTCCGTTCCACCACAAAAGTGCAGATCACTTAAACGGCCTGCTTCGGGAAATAGAGGCAACCAATGCA
GTCCTTATGGAGCAAAATTAAGCTTCTCAAAAGTAAATAAGAAGATTGAAAGGAATCAAGAGCGAGAGA

AGTCTGCAGCTAACCTGGAATACTTGAAGAACGCTTGCTGCAGTTCATTTTCTTGAAGCCAGGTAGTGA
 AAGAGAGAGACTTCTTCTGTTATAAATACGATGTTGCAGCTCAGCCCTGAAGAAAAGGGAAAACCTGCT
 GCGGTTGCTCAAGATGAGGAAGAAAATGCTTCCCCTTCTTCTGGA

ACGCGTACGCGGCCGCTCGAGCAGAACTCATCTCAGAAGAGGATCTGGCAGCAATGATATCCTGGATT
 ACAAGGATGACGACGATAAGGTTTAA

Protein Sequence:

>RC226429 representing NM_001123363
 Red=Cloning site Green=Tags(s)

MRRSKADVERYVASVLGLTPSPRQKSMKGFYFAKLYYEAKYDLAKKYICTYINVQERDPKAHRFLGLLY
 ELEENTEKAVECYRRSVELNPTQKDLVLKIAELLCKNDVTDGRAKYWVERAAKL FPGSPA IYKLEQQLD
 CEGEDGWNKLFDLIQSELYVRPDDVHVNI RLV ELYRSTKRLKDAVAHCHEAERNIALRSSLEWNSCVVQT
 LKEYLES LQCLESDKSDWQATNTDLLLAYANMLLTLSTRDVQENRELLESFDSALQSAKSSLGGNDELS
 ATFLEMKGHFYMYAGSLLLKMGQHGNVQWRALSELAALCYLIAFQVPRPKIKLREGKAGQNLLEMMA CD
 RLSQSGHMLLSL SRGKQDFLKEVVET FANKIGQSALYDALFSSQSPKDT SFLGSDDIGKIDVQPEPEL EDL
 ARYDVGAIRAHNGSLQHLTWLGLQWNSLPALPGIRKWLKQLFHRLPHETSRLTNAPE S ICILDLEVFL L
 GVYYTSHLQLKEKCNSHSSYQPLCLFPVCKQLCTERQKSWWDVAVCTL IHRKAVPGNLAKLRLLVQHEI
 NTLRAQEKHGLQPALLVHWAKYLQKTGSLNSFYGQLEYIGRSVHYWKKVPLLLKIIKKN S IPEPIDPLF
 KHFHSDVIQASEIVEYEEDA HITFAMLD AVNGNIEDAVTAFESIKSVVSYWNLALIFHRKAEDIENDALS
 PEEQE ECRNYLTKTRDYLIKIIDGDSNL SVVKKLPVPLESVKQMLNSVMQELEDYSEGGLYKNGSLRN
 ADSEIKHSTPSPKYSLSKYSKYSPE T PPRWTE DRNSLLNMI CQQVEAIKKEMQELKLNSSKSASRHR
 WPTENYGPDSVPDGYQGSQTFHGAPLTVATTGSPVYYSQSPAYNSQYLLRPAANVTPTKGSNTEFKSTK
 EGF S I PVSADGFKFGISEPGNQEKKREKPLENDTGFQAQDISGRKKGRGVIFGQTSSTTFADVAKSTSG
 EGFQFGKDLNFKGFSGAGEKLFSSRYGKMANKANTSGDFEKDDDAYKTEDSDDIHFEPPVQMPKEVELV
 TGEEGE KVLVSQGVK LFRFDAEVRQWKERGLGNL KILKNEVNGKLRMLMRREQVLKVCANHWITTTMNLK
 PLSGSDRAWMWSASDFSDGAKLERLAAKFKTPELAEFEKQKFEECQRLLLDIPLQTPHKLVDTGRAAKL
 IQRAEEMKSGLKDFKFTLNDQTKVTEENKGS GTGAAGASDTTIKPNAENTGPTLEWDNYDLREDALDD
 SVSSSSVHASPLASSPVRKNLFRFDESTTGSNFSFKSALSLSKSPAKLNQSGTSVGTDEESVVTQEEERD
 GQYFEPVPLPDLVEVSSGEENEQVVF SHRAEIYRYDKDVGQWKERIGDIKILQNYDNKQVRIVMRRDQ
 VLKLCANHRITPDMSLQNMKGTERVWVW TACDFADGERKVEHLAVRFKLQDVADSFKKIFDEAKTAQEKD
 SLITPHVSRSSTPRESPCGKIAVAILEETTTRERTDVIQGDVADAASEVEVSSTSETTTKAVVSPPKFVF
 VSESVKRIF SSEKSKPFVFGNSSATGSLFGFSFNAPLKSNNSETSSVAQSGSESKEPKKCELSKNSDIE
 QSSDSKVKNLSASFPT EESSIN YTFKTPEKEPPLWHA EFTKEELVQKLRSTTKSADHLNGLLREIEATNA
 VLMEQIKLLKSEIRRLERNQEREKSAANLEYLKNVLLQFIFLKP GSERERLLPVINTMLQLSPEEKGLA
 AVAQDEEENASRSSG

TRTRPLEQKLISEEDLAANDILDYKDDDDKV

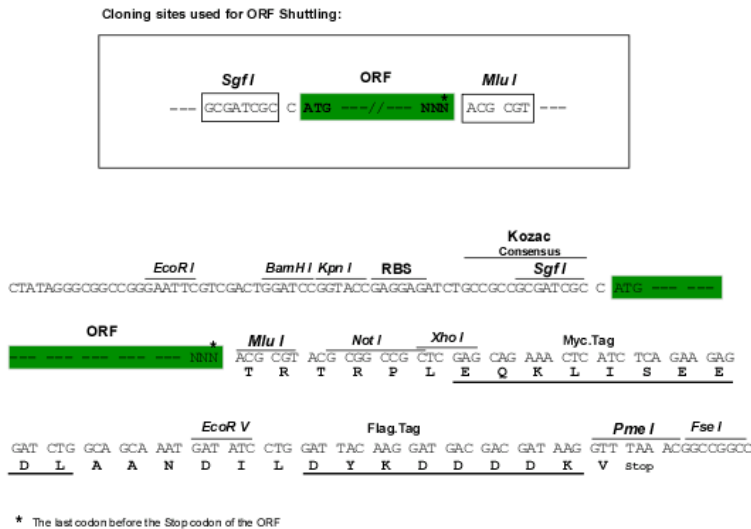
Chromatograms:

https://cdn.origene.com/chromatograms/mk8032_a01.zip

Restriction Sites:

Sgfl-Mlul

Cloning Scheme:



ACCN: NM_001123363

ORF Size: 5295 bp

OTI Disclaimer: The molecular sequence of this clone aligns with the gene accession number as a point of reference only. However, individual transcript sequences of the same gene can differ through naturally occurring variations (e.g. polymorphisms), each with its own valid existence. This clone is substantially in agreement with the reference, but a complete review of all prevailing variants is recommended prior to use. [More info](#)

OTI Annotation: This clone was engineered to express the complete ORF with an expression tag. Expression varies depending on the nature of the gene.

Components: The ORF clone is ion-exchange column purified and shipped in a 2D barcoded Matrix tube containing 10ug of transfection-ready, dried plasmid DNA (reconstitute with 100 ul of water).

Reconstitution Method:

1. Centrifuge at 5,000xg for 5min.
2. Carefully open the tube and add 100ul of sterile water to dissolve the DNA.
3. Close the tube and incubate for 10 minutes at room temperature.
4. Briefly vortex the tube and then do a quick spin (less than 5000xg) to concentrate the liquid at the bottom.
5. Store the suspended plasmid at -20°C. The DNA is stable for at least one year from date of shipping when stored at -20°C.

RefSeq: [NM_001123363.3](#), [NP_001116835.1](#)

RefSeq ORF: 5298 bp

Locus ID: 729540

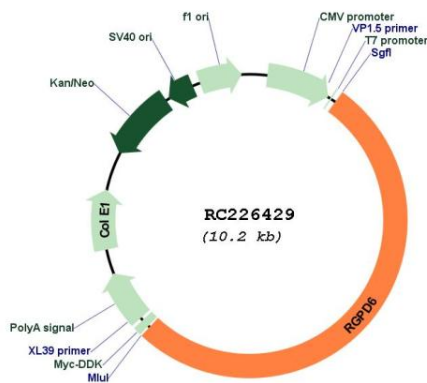
UniProt ID: [Q99666](#)

Cytogenetics: 2q13

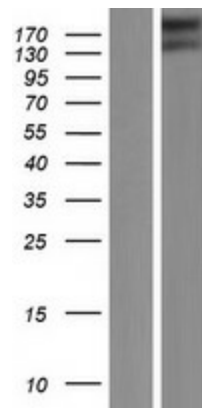
Protein Families: Druggable Genome

MW: 198.7 kDa

Product images:



Circular map for RC226429



Western blot validation of overexpression lysate (Cat# [LY426608]) using anti-DDK antibody (Cat# [TA50011-100]). Left: Cell lysates from untransfected HEK293T cells; Right: Cell lysates from HEK293T cells transfected with RC226429 using transfection reagent MegaTran 2.0 (Cat# [TT210002]).