

Product datasheet for **RC226424**

BCOR (NM_001123383) Human Tagged ORF Clone

Product data:

Product Type: Expression Plasmids
Product Name: BCOR (NM_001123383) Human Tagged ORF Clone
Tag: Myc-DDK
Symbol: BCOR
Synonyms: ANOP2; MAA2; MCOPS2
Mammalian Cell Selection: Neomycin
Vector: pCMV6-Entry (PS100001)
E. coli Selection: Kanamycin (25 ug/mL)
ORF Nucleotide Sequence: >RC226424 representing NM_001123383
Red=Cloning site Blue=ORF Green=Tags(s)

TTTTGTAATACGACTCACTATAGGGCGGCCGGAATTCGTCGACTGGATCCGGTACCGAGGAGATCTGCC
GCC**CGATCGCC**

ATGCTCTCAGCAACCCCCCTGTATGGGAACGTTACAGCTGGATGAACAGCGAGAGGGTCCGCATGTGTG
GGGCGAGCGAAGACAGGAAAATCCTTGTAAATGATGGTGACGCTTCAAAGCCAGACTGGAAGTGGGGA
AGAGAATCCCTTGAACCACAACGTGGTGGATGCGAGCACGGCCATAGGATCGATGGCCTGGCAGCACTG
AGCATGGACCGCACTGGCCTGATCCGGGAAGGGTGCCTGGTCCCGGAAACATCGTCTATTCTAGCTTGT
GTGGACTGGGCTCAGAGAAAGGTCGGGAGGCTGCCACAAGCACTAGGTGGCCTTGGGTTTTCTTCGGA
AAGAAATCCAGAGATGCAGTTCAAACCGAATACACCCGAGACAGTGGAGGCTTCTGCCGTCTCTGAAAA
CCCCAAATGGCTTCAGTGCTATATACAAAACCCGCCTGGAATACAAAAAGTGCTGTAGCCACAGCAG
AAGCGCTGGGCTTGGACAGGCTGCCAGCGACAAACAGAGCCCTCTCAACATCAATGGTGCTAGTTATCT
GCGGCTGCCCTGGGTCAATCCTTACATGGAGGGTGCCACGCCAGCCATCTACCCTTCTCGACTCGCCA
AATAAGTATTCAGTGAACATGTACAAGGCTTGTACCTCAGCAGTCTACAGCTTGGCCAGCCGCTGT
ATTCTCCAGTCTGCACCAATGGGAGCGCTTCTCTACCTGCCGCCACCTCACTACGTCCGGTCCCCACAT
CCCATCGTCTTGGCATACCCATGAGGCTCTCGACACCTTCGGCTCCCGAGCCATCCCGCTCTCGTC
CATTGCGCAGACAAAAGCCTCCCGTGGAGATGGGCGTCAGCCCTGGGAATCCTGTTGATTCCACGCCT
ATCCTCACATCCAGAACAGTAAGCAGCCAGGGTTCCTCTGCCAAGCGGTCACCAAGTGGCCTGCCGGG
GGACACAGCTCTCCTGTTGCCCCCTCGCCTCGGCCGTACCCCGAGTCCACCTTCCACCCAGCCTGTCT
GCAGACACCTACTCGGAGTTCACAAGCACTATGCCAGGATCTCCACCTCTCCTCAGTTGCCCTGTCAA
AGCCATACATGACAGTTAGCAGCGAGTTCGCCGCGCCAGGCTCTCCAATGGCAAGTATCCCAAGGCTCC
GGAAGGGGGCAAGGTGCCAGCCAGTGCCGGGCATGCCGGAAGACAGCGGTTCAAGACAGAAAAGAT
GGCAGCTCACCTCTGTTGGAGAAGCAGACCGTTACCAAGACGTACAGATAAGCCACTAGACTTGT
CTTCTAAAGTGGTGGATGTAGATGCTTCCAAAGCTGACCACATGAAAAAGATGGCTCCACGGTCTCTGGT
TCACAGCAGGGCTGGAAGTGGCTTAGTGCTCTCCGGAAGTGGATTCGAAAGAAACACTATCTCTCTCA



[View online »](#)

GGAAATGGTTGTGCTATCTATAGATCTGAAATCATCAGCACTGCTCCCTCATCTGGGTGGTGCCCGGGC
 CAAGTCCTAACGAAGAGAACAATGGCAAAAGCATGTCGCTGAAAAACAAGGCATTGGACTGGGCGATACC
 ACAGCAGCGGAGTTATCATGCCCAGCATGGGCGGCACCGATGCTGTCATCACTAACGTTTCAGGGTCA
 GTGTCGAGTGCAGGCCGCCAGCCTCCGCATCACCCGCCCAATGCCAATGCAGATGGCACAAAAACCA
 GCAGGAGCTCTGTAGAAACCACCATCCGTTATTCAGCACGTGGGCCAGCCCCGGCCACTCCTGCCAA
 GCACAGTAGCAGCACCAGCAGCAAGGGCGCCAAAGCCAGCAACCCAGAACCGAGTTTCAAAGCAAACGAG
 AACGGCCTTCCACCAAGCTCATATTTCTGTCTCCAAATGAGGCATTGAGTCCCCTACATGGCAAAGG
 CCAGGAGTTACCTCCCTTACCCAGCCCCTGAGGGCATTGCTGTAAGTCCCCTCCTTACATGGCAAAGG
 ACCTGTCTACCCTCACCCAGTTTTGTTACCCAATGGCAGTCTGTTTCTGGGCACCTTGCCCAAAGCCT
 GGGCTGCCCTATGGGCTTCCACCGGCCGTCCAGAGTTTGTGACCTACCAAGATGCCCTGGGGTTGGGCA
 TGGTGCATCCCATGTTGATACCACACACGCCCATAGAGATTACTAAAGAGGAGAAACCAGAGAGGAGATC
 CCGGTCCCATGAGAGAGCCGTTACGAGGACCCAAACCCTCCGGAATCGTTTTCCGAGATTTTGGAACT
 AGCAGCACCAAGTTACATCCAGATGTCCCACCGACAAGAACCCTAAAGCCGAACCCCACTGGAATCAAG
 GGAAGACTGTTGTCAAAGCGACAAGCTTGTCTACGTAGACCTTCTCCGAGAAGAACCAGATGCTAAAC
 TGACACAAACGTGTCAAACCCAGCTTTGCAGCAGAGAGTGTGGCCAGAGCGCTGAGCCCCCAAGCCC
 TCAGTTGAGCCGGCCCTGCAGCAGCACCCTGATTTTCATCGCCCTGAGAGAGGAGTTGGGGCGCATCAGTG
 ACTTCCACGAACTTATACTTTCAAACAGCCAGTCTTACCCTAAGCAAGGACAGTGTCTGGCAGGTAC
 CAACAAAGAGAACCCTAGGGTTGCCAGTCTCGACTCCATTCCTGGAGCCACCTCTGGGGAGCGATGGCCCT
 GCTGTAACTTTTGGTAAAACCAAGAGGATCCCAAACATTTTGTGTGGGCAGTGGCCCAACAGTGTGG
 ATGTGACCCCCACCTATACCAAAGATGGAGCTGATGAGGCTGAATCAAATGATGGCAAAGTTCTGAAACC
 GAAGCCATCTAAGCTGGCAAAGAGAATCGCAACTCAGCGGGTACGTGGGTGACCGATTCAAATGTGTC
 ACTACCGAAGTGTATGCAGATTCAGTCAGCTCAGCCGGGAGCAACCGGCATTGCAGATGGAAGGATTAC
 AAGAGGACAGTATTTTATGTCTACCCGCTGCTTACTGTGAGCGTCAATGATGCGCTTCTCAGAGTTGGA
 GATGAAAAGAAAGAGAAGTGGCCACCCAGCAACCAAAGACTCCGAGATGTGCAAATTCAGCCAGCCGAC
 TGGGAAAGGTTGAAAGGAAATCAGGACAAAAAGCCAAAGTCGGTACCCTGGAGGAGGCCATTGCAGAAC
 AGAACGAAAGTGAGAGATGCGAGTATAGTGTGGAAACAAGCACCGTGTCCCTTTGAAGCCCCAGAGGA
 CAAAGATCTTCTGTGGAGAAGTACTTTGTGGAGAGGCAGCCTGTGAGCGAGCCTCCCGCAGACCAGGTG
 GCCTCGGACATGCCTCACAGCCCCACCCTCCGGGTGGACAGGAAACGCAAAGTCTCAGGTGACAGCAGCC
 AACTGAGACCACTGCGGAGGAGGTGCCAGAGGACCCTCTGCTGAAAGCCAAACGCCGACGAGTCTTAA
 AGGGCTCCATCTAAAAAACAACGCCACTTGTGCACCTTAGAGAACGATGGGAGCAGCAGGTGTCGGCA
 GCAGATGGCAAACCTGGCCGGCAAAGCAGGAAGGAAGTGACCCAGGCCACTCAGCCTGAGGCCATTCCTC
 AGGGGACTAACATCACTGAAGAGAAACCTGGCAGGAAAAGGGCAGAGGCCAAAGGCAACAGAAGCTGGTC
 GGAAGAGTCTCTTAAACCAAGTGAATGAACAAGGCTTGCCTGTGTTCTCCGGCTCTCCGCCATGAAG
 AGTCTTTCATCCACCAGTGCAGGCGGCAAAAAGCAGGCTCAGCCAAGCTGCGCACCAAGCCTCCAGGCCGC
 CTGCCAAACAGCAGAAAAATTAAGAAAACAGAAAGACAGATGTGCTGTGTGCAGACGAAGAAGAGGATTG
 CCAGGCTGCCTCCCTGTGCAGAAATACACCGACAACAGCGAGAAGCCATCCGGGAAGAGACTGTGCAAA
 ACCAAACACTTGATCCCTCAGGAGTCCAGGCGGGGATTGCCACTGACAGGGGAATACTACGTGGAGAATG
 CCGATGGCAAGGTGACTGTCCGGAGATTCAGAAAGCGGCCGAGCCAGTTCGGACTATGATCTGTCACC
 AGCCAAGCAGGAGCCAAAGCCCTTCGACCGCTTGACGCAACTGCTACCAGCCTCCAGTCCACACAGCTG
 CCATGCTCAAGTTCCCCTCAGGAGACCACCCAGTCTCGCCCTATGCCCGCGGAAGCACGGAGACTTATTG
 TCAATAAGAACGCTGGCGAGACCCTTTCAGCGGGCAGCCAGGCTTGGCTATGAGGAAGTGGTCTGTGTA
 CTGCTTAGAGAACAAGATTTGTGATGTAATCATCGGGACAACGCAGGTTACTGCGCCCTGCATGAAGCT
 TGTGCTAGGGGCTGGCTCAACATTTGTGCGACACCTCCTTGAATATGGCGCTGATGTCAACTGTAGTGCC
 AGGATGGAACCAGGCTCTGCACGATGCTGTTGAGAACGATCACTTGGAAATGTCCGACTACTTCTCTC
 TTATGGTGTGACCCACCTTGGCTACGTACTCAGGTAGAACCATCATGAAAATGACCCACAGTGAACCT
 ATGGAAAAGTTCTTAACAGATTATTTAAATGACCTCCAGGCTCGAATGATGATGACGCCAGTGGCACTT
 GGGACTTCTATGGCAGCTCTGTTTGTGAACCAGATGATGAAAGTGGCTATGATGTTTTAGCCAACCCCC
 AGGACCAGAAGACCAGGATGATGATGACGATGCCTATAGCGATGTGTTTGAATTTGAATTTTCAGAGACC
 CCCCTCTTACCGTGTATAACATCCAAGTATCTGTGGCTCAGGGGCCACGAAACTGGCTACTGCTTTCGG
 ATGTCTTAAGAAATGAAAATGTCTCCCGCATATTTGCTGCAATTTTCAAACGTGGAAATGTGAC
 CATTGCAGAGGCAGAAATTTATCGGCAGTTTCTGCAAGTCTCTTGTCTTGTCTTCCAAAGACCTGGAA
 GCCTTCAACCCTGAAAGTAAAGAGCTGTAGATCTGGTGAATTCACGAACGAAATTCAGACTCTGCTGG

GCTCCTCTGTAGAGTGGCTCCACCCAGTGATCTGGCCTCAGACAACTACTGG

ACGCGTACGCGGCCGCTCGAGCAGAACTCATCTCAGAAGAGGATCTGGCAGCAATGATATCCTGGATT
ACAAGGATGACGACGATAAGGTTTAA

Protein Sequence:

>RC226424 representing NM_001123383
Red=Cloning site Green=Tags(s)

MLSATPLYGNVHSMNSERVRMCGASEDRKILVNDGDASKARLELREENPLNHNVDASTAHRIDGLAAL
SMDRTGLIREGLRVPGNIVYSSLGSEKGREAAATSTLGGFGFSSERNPEMQFKPNTPETVEASAVSGK
PPNGFSAIYKTPPGIQKSAVATAEALGLDRPASDKQSPLNINGASYLRPWVNPYMEGATPAIYPFLDSP
NKYSLNMYKALLPQQSYSLAQPLYSPVCTNGERFLYLPPIHYVGHIPSSLASPMRLSTPSASPAIPLV
HCADKSLPWKMGVSPGNPVDSHAYPHIQNSKQPRVPSAKAVTSGLPDGTALLLPPSPRSPRVHLPTQPA
ADTYSEFHKHYARISTSPSVALSKPYMTVSSEFPAARLSNGKYPKAPEGGEGAQVPVGHARKTAVQDRKD
GSSPPLLEKQTVTKDVTDKPLDLSKVVDVADASKADHMKKMAPTVLVHSRAGSGLVLSGSEIPKETLSPP
GNGCAIYRSEIISTAPSSWVVPGPSNEENNGKMSLKNKALDWAIPQQRSSSCPMMGGTDAVITNVS
VSSAGRPASAPANADGKTSTRSSVETTPSVIQHVGQPPATPAKHSSSTSSKAKASNPEPSFKANE
NGLPPSSIFLSPNEAFRSPPIPYPRSYLPYPAPEGIAVSPLSLHGKGPVYPHPVLLPNGSLFPGLHAPK
GLPYGLPTGRPEFVTYQDALGLGMVHPMLIPHTPIEITKEEKERRSRHERARYEDPTLRNRFSEIET
SSTKLHPDVPTDKNLKPNPNWNQKTVVKSDKLVYVDLLREEPDAKTDTNVSKPSFAAESVQSAEPPK
SVEPALQQHRDFIALREELGRISDFHETTYFKQPVFTVSKDSVLAGTNKENLGLPVSTPFLEPLGSDGP
AVTFGKTQEDPKPFCVGSAPPSVDVTPTYTKDGADEAESNDGKVLKPKPSKLAKRIANSAGYVGD
RKFCTTEL YADSSQLSREQRALQMEGLQEDSILCLPAAYCERAMMRFSELEMKEREGGHATKSEMCKFSPAD
WERLKGNDKPKSVTLEEAIAEQNESERCEYSVGNKHRDPFEAPEDKDL PVEKYFVERQVSEPPADQV
ASDMPHSPTLRVDRKRKVSVDSSHTETTAEVPEPDLKAKRRRVSGLHPPKQRHLLHLRERWEQQVSA
ADGKPGRQSRKEVTQATQPEAIPQGTNI TEEKPGRKRAEAKGNRSWSEESLKPSDNEQGLPVFSGSPPMK
SLSSTSAGGKKQAQPSCAPSRPPAKQKIKENQKTDVLCADDEEDCQAASLLQKYTDNSEKPSGKRLCK
TKHLIPQESRRGLPLTGEYYVENADGKVTVRRFRKRPEPSSDYDLSPAKQEPKPFDRLLQQLPASQSTQL
PCSSSPQETTQSRPMPPEARLIVNKNAGETLLQRAARLGYEEVLYCLENKICDYNHRDNAGYCALHEA
CARGWLNIVRHLLLEYGADVNCQAQDGRPLHDAVENDHLEIVRLLL SYGADPTLATYSGRTIMKMTSEL
MEKFLTDYLNLDLQGRNDDASGTWDFYGSVCEPDESGYDVLANPPGPEQDDDDDDAYSDFEFEFSET
PLLPCYNIQVSVAGPRNWL LLDVLLKLMSSRIFRCNFPNVEIVTIAEAIFYRQVSASLLFSCSKDLE
AFNPESKELLDLVEFTNEIQTLGSSVEWLHPSDLASDNYW

TRTRPLEQKLI SEEDLAANDILDYKDDDDKV

Chromatograms:

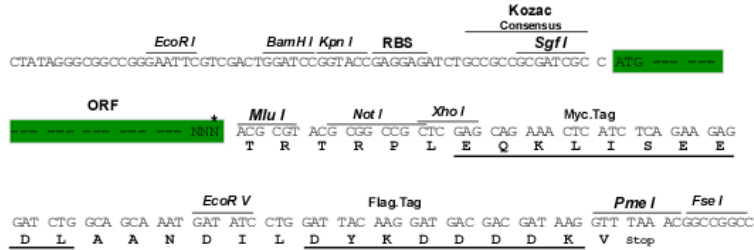
https://cdn.origene.com/chromatograms/mk6263_b02.zip

Restriction Sites:

SgfI-MluI

Cloning Scheme:

Cloning sites used for ORF Shuttling:



* The last codon before the Stop codon of the ORF

ACCN: NM_001123383

ORF Size: 5163 bp

OTI Disclaimer: The molecular sequence of this clone aligns with the gene accession number as a point of reference only. However, individual transcript sequences of the same gene can differ through naturally occurring variations (e.g. polymorphisms), each with its own valid existence. This clone is substantially in agreement with the reference, but a complete review of all prevailing variants is recommended prior to use. [More info](#)
OTI Annotation: This clone was engineered to express the complete ORF with an expression tag. Expression varies depending on the nature of the gene.

Components: The ORF clone is ion-exchange column purified and shipped in a 2D barcoded Matrix tube containing 10ug of transfection-ready, dried plasmid DNA (reconstitute with 100 ul of water).

Reconstitution Method:

1. Centrifuge at 5,000xg for 5min.
2. Carefully open the tube and add 100ul of sterile water to dissolve the DNA.
3. Close the tube and incubate for 10 minutes at room temperature.
4. Briefly vortex the tube and then do a quick spin (less than 5000xg) to concentrate the liquid at the bottom.
5. Store the suspended plasmid at -20°C. The DNA is stable for at least one year from date of shipping when stored at -20°C.

RefSeq: [NM_001123383.1](#), [NP_001116855.1](#)

RefSeq ORF: 5166 bp

Locus ID: 54880

UniProt ID: [Q6W2J9](#)

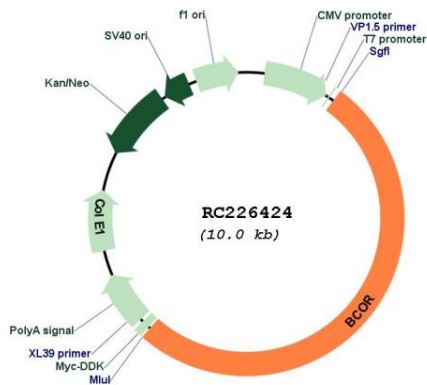
Cytogenetics: Xp11.4

Protein Families: Transcription Factors

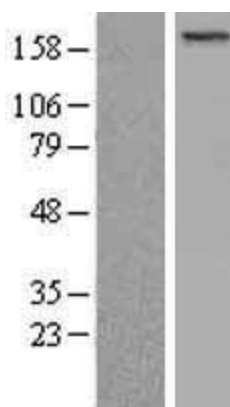
MW: 188 kDa

Gene Summary: The protein encoded by this gene was identified as an interacting corepressor of BCL6, a POZ/zinc finger transcription repressor that is required for germinal center formation and may influence apoptosis. This protein selectively interacts with the POZ domain of BCL6, but not with eight other POZ proteins. Specific class I and II histone deacetylases (HDACs) have been shown to interact with this protein, which suggests a possible link between the two classes of HDACs. Several transcript variants encoding different isoforms have been found for this gene. A pseudogene of this gene is found on chromosome Y.[provided by RefSeq, Jun 2010]

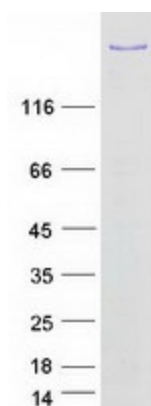
Product images:



Circular map for RC226424



Western blot validation of overexpression lysate (Cat# [LY426616]) using anti-DDK antibody (Cat# [TA50011-100]). Left: Cell lysates from untransfected HEK293T cells; Right: Cell lysates from HEK293T cells transfected with RC226424 using transfection reagent MegaTran 2.0 (Cat# [TT210002]).



Coomassie blue staining of purified BCOR protein (Cat# [TP326424]). The protein was produced from HEK293T cells transfected with BCOR cDNA clone (Cat# RC226424) using MegaTran 2.0 (Cat# [TT210002]).