

Product datasheet for RC226419

LAMA3 (NM_001127718) Human Tagged ORF Clone

Product data:

Product Type:	Expression Plasmids
Product Name:	LAMA3 (NM_001127718) Human Tagged ORF Clone
Tag:	Myc-DDK
Symbol:	LAMA3
Synonyms:	BM600; E170; LAMNA; LOCS
Vector:	pCMV6-Entry (PS100001)
E. coli Selection:	Kanamycin (25 ug/mL)
Cell Selection:	Neomycin
ORF Nucleotide Sequence:	>RC226419 representing NM_001127718 Red=Cloning site Blue=ORF Green=Tags(s)

TTTTGTAATACGACTCACTATAGGGCGGCCGGAATTCGTCGACTGGATCCGGTACCGAGGAGATCTGCC
GCC**CGATCGCC**

ATGCTCCAGCAGTGAGGCGGTGAGCCTGCAGCATGGGATGGCTGTGGATCTTTGGGGCAGCCCTGGGGC
AGTGTCTGGGCTACAGTTCACAGCAGCAAAGGGTGCCATTTCTTCAGCCTCCCGGTCAAAGTCAACTGCA
AGCGAGTTATGTGGAGTTAGACCCAGCCAGGGTTGTAGCCTGGATACTATCGGGATCATAAAGGCTTG
TATACCGGACGGTGTGTTCCCTGCAATTGCAACGGACATTCAAATCAATGCCAGGATGGCTCAGGCATAT
GTGTTAACTGTCAGCACAAACCCGCGGGAGAGCACTGTGAACGCTGCCAGGAGGGCTACTATGGCAACGC
CGTCCACGGATCCTGCAGGGCCTGCCATGTCTCACACTAACAGCTTTGCCACTGGCTGTGTGGTGAAT
GGGGGAGACGTGCGGTGCTCCTGCAAAGCTGGGTACACAGGAACACAGTGTGAAAGGTGTGCACCGGGAT
ATTTCCGGAAATCCCAGAAATTCGGAGGTAGCTGCCAACCATGCAGTTGTAAACAGCAATGGCCAGCTGGG
CAGCTGTCATCCCTGACTGGAGACTGCATAAACAAGAACCACAAAGATAGCAGCCCTGCAGAAGAATGT
GATGATTGCGACAGCTGTGTGATGACCCCTCCTGAACGACCTGGCCACCATGGGCGAGCAGCTCCGCTGG
TCAAGTCTCAGCTGCAGGGCCTGAGTGCCAGCGCAGGGCTTCTGGAGCAGATGAGGCACATGGAGACCCA
GGCCAAGGACCTGAGGAATCAGTTGCTCAACTACCGTTCTGCCATTTCAAATCATGGATCAAAAATAGAA
GGCCTGGAAGAGAAGTACTGACTGATTTGAATCAAGAATTTGAGACTTTGCAAGAAAAGGCTCAAGTAAAT
CCAGAAAAGCACAAACATTAACAACAATGTTAATCGGGCAACACAAAGCGCAAAAAGAACTGGATGTGAA
GATTAATAATGTCATCCGGAATGTGCATGCTGAACCGGATAAGGACCTGGCAGAAAACCCAGGGG
GAGAACAATGGGCTTGTAAACAGTATCCGGATTCTTTAAATGAATACGAAGCCAAACTCAGTGACCTTC
GTGCTCGGCTGCAGGAGGACGCTGCCAAGCCAAGCAGGCAAATGGCTTGAACCAAGAAAACGAGAGAGC
TTTGGGAGCCATTCAGAGACAAGTGAAGAAAATAAATTCCTGCAGAGTGATTTACCAAGTATCTAACCC
ACTGCAGACTCATTTTGTGCAACCAACATTGCGCTGCAGCTGATGGAGAAAAGCCAGAAAGGAATATG
AAAAATTAGCTGCCAGTTTAAATGAAGCAAGACAAGAATAAGTGACAAAGTAAGAGAATTTCCAGATC
TGCTGGCAAAAACATCCCTTGTGGAGGAGGCAGAAAAGCACGCGCGGTCTTACAAGAGCTGGCAAAGCAG
CTGGAAGAGATCAAGAGAAACGCCAGCGGGGATGAGCTGGTGCCTGTGCTGTGGATGCCCCACCGCCT



[View online »](#)

ACGAGAACATCCTCAATGCCATCAAAGCGGCCGAGGACGCAGCCAACAGGGCTGCCAGTGATCTGAATC
TGCCCTCCAGACAGTGATAAAGGAAGATCTGCCAAGAAAAGCTAAAACCCCTGAGTCCAACAGTGATAAA
CTGTAAATGAAGCCAAGATGACACAAAAGAAGCTAAAGCAAGAAGTCAGTCCAGCTCTCAACAACCTAC
AGCAAACCTGAATATTGTGACAGTTGAGAAAGAAGTGATAGACACCAATCTCACAACCTCCGAGATGG
TCTTCAATGGGATACAGAGAGGTGATATTGATGCTATGATCAGTAGTGCAAAGAGCATGGTCAGAAAGGCC
AACGACATCACAGATGAGGTTCTGGATGGGCTCAACCCCATCCAGACAGATGTGGAAGAATTAAGGACA
CCTATGGGAGGACACAGAACGAAGACTCAAAAAGGCTCTGACTGATGCAGATAACTCGGTGAATAAGTT
AACCAACAACTACCTGATCTTTGGCGCAAGATTGAAAGTATCAACCAACAGCTGTTGCCCTGGGAAAC
ATCTCTGACAACATGGACAGAATACGAGAATAATTGAGCAGGCCAGAGATGCTGCCAGTAAAGTTGCTG
TCCCCATGAGGTTCAATGGTAAATCTGGAGTGAAGTCCGACTGCCAAATGACCTGGAAGATTTGAAAGG
ATATACATCTCTGCTTGTCTTCCAAAGGCCCAACTCAAGAGAAAATGGGGTACTGAGAATATGTTT
GTGATGTACCTTGAAATAAAGATGCCTCCCGGACTACATCGGCATGGCAGTTGTGGATGGCCAGCTCA
CCTGTGTCTACAACCTGGGGACCGTGAGGCTGAACCTCAAGTGGACCAGATCTTGACCAAGAGTGAGAC
TAAGGAGGCAGTTATGGATCGGGTAAAATTTAGAGAATTTATCAGTTTGAAGGCTTAATTACACAAA
GGAGCCACATCCAGTAAACCAGAAACACCCGGAGTCTATGACATGGATGGTAGAAATAGCAATACACTCC
TTAATTTGGATCCTGAAAATGTTGATTTTATGTTGGAGGTTACCCACCTGATTTTAAACTTCCCAGTCCG
ACTAAGTTTCCCTCCATACAAAGTTGATTGAATTAGATGACCTCAATGAAAATGTTCTGAGCTTGAC
AACTTCAAAAAACATTCATCTCAACACAACCTGAAGTGGAGCCTTGTAAGGAGGAAGGAAGAGTCAG
ACAAAAATTTTTGAAGGTACGGGCTATGCTCGAGTTCAACTCAACCACATGCTCCCATCCCAACCTT
TGGACAGACAATTCAGACCACCGTGGATAGAGGCTTGCTGTTCTTTCAGAAAACGGGGATCGCTTCATA
TCTCTAAATATAGAAGATGGCAAGCTCATGGTGAATACAAAAGTAAATTCAGAGCTACAAAAGAGAGAG
GAGTTGGAGACGCATAAACAACGGCAGAGACCATTCGATTGAGTCAAAAATGGAAAATCCAAAAGCG
TATGTGGATAAATGTGGACGTTCAAAACTATAATTGATGGTGAAGTATTGATTTGAGTCAAGTATTTAT
CTGGGAGGAATTCCAATTGCAATCAGGGAAAGATTTAACATTTCTACGCTGCTTTCCGAGGCTGATGA
AAAATTTGAAGAAAACAGTGGTGTGTTAGATTGAATGATACTGTGGGAGTAACCAAAAAGTGGCTCGGA
AGACTGGAAGCTTGCGATCTGCCTCATTCTCCAGAGGAGGACAATTGAGTTTCACTGATTTGGGCTTA
CCACCTACTGACCACCTCCAGGCCTCATTGGATTTAGACCTTTCAACCAGTGGCATATTATTAGATC
ATCAGACATGGACAAGGAACCTGCAGGTCCTGGAAGATGGTTACATTGAATTGAGCACCAGCGATAG
CGGCAGCCCAATTTTTAAATCTCCACAGACGTATATGGATGGTTACTGCATTATGTATCTGTAATAAGC
GACAACCTGGACTACGGCTTCTCATCGATGACCAGCTTCTGAGAAATAGCAAAAAGGCTAAAACACATTT
CAAGTTCCCGGCAGTCTCTGCTGCTGGGCGGGAGCAATTTGAGGTTGATTAGCAATGTTTTTGTCCA
GAGGTTATCACTGAGTCCGAAGTCTAGATTTGACCAGTAACTCTCTCAAGAGAGATGTGTCCCTGGGA
GGCTGCAGTTTAAACAAACCACCTTTTCTAATGTTGCTTAAAGGTTCTACCAGGTTTAAACAGCAAGA
CTTTTCGTATCAACCAGCTGTTGCAAGGACACACCAGTGGCCTCCCAAGGAGCGTGAAGGTGGGAAGA
TGCTTGTCAACCTTCCAAGACCCAGGCCAATCATGGAGCCCTCCAGTTTGGGGACATTTCCACCAGC
CACTTGTATTCAAGCTTCTCAGGAGCTGCTGAAACCCAGGTCACAGTTTGTGTGGACATGCAGACAA
CATCCTCCAGAGGACTGGTGTTCACACGGGCACTAAGAACTCCTTTATGGCTCTTTATCTTTAAAAGG
ACGTCTGGTCTTTCAGTGGGACAGATGGGAAAAATGAGGATCAAAAGCAAGGAGAAATGCAATGAT
GGGAAATGGCACACGGTGGTGTGGCCATGATGGGAAAAGGGGCGCTTGGTTGGATGGACTGAGGG
CCCGGGAGGGAAGTTTGCCTGAAAACCTCACCATCAGCATCAGAGCGCCAGTTTACCTGGGATCACCTCC
ATCAGGAAACCAAGAGCCTCCCAACAACAGCTTTGTTGGGATGCCTGAAGAACTTTGAGCTGGATTCA
AAACCCTGTATACCCCTTCTCAAGCTTCCGGGTGCTTCTGCTTGGGTGGTCTTTGGAGAAAGGCA
TTTATTTCTGAAAGAAGGAGGTGATGCTGCTTGGCTCACTCTGATTGTTGGGGCCAGAAATTAAGCT
TGTTTTCAGCATCCGCCAAGAAGTCTCACTGGGATCCTAATACACATCGGAAGTCAAGCCGGGAAGCAC
TTATGTGTTTACCTGGAGGCAGGAAAGGTACGGCCTCTATGGACAGTGGGGCAGGTGGGACCTCAACGT
CGGTACACCAAAGCAGTCTCTGTGATGGACAGTGGCACTCGGTGGCAGTACCATAAAAACAACAT
CCTGCACCTGAACTGGACACAGACAGTAGCTACACAGTGGACAGATCCCTTCCACCTGCCAGCACT
CAAGAGCCACTACACCTTGGAGGTGCTCCAGCCAATTTGACGACACTGAGGATCCCTGTGTGAAATCAT
TCTTTGGCTGTCTGAGGAATATTGATGCAATCACATCCCTGTCCCTGTCACTGAAGCCTTGAAGTCCA
GGGCCTGTCACTGAAATGGTTGCTGACCAG

ACGCGTACGCGGCCGCTCGAGCAGAACTCATCTCAGAAGAGGATCTGGCAGCAATGATATCCTGGATT

ACAAGGATGACGACGATAAGGTTTAA

Protein Sequence:

>RC226419 representing NM_001127718

Red=Cloning site Green=Tags(s)

```
MPPAVRRSACSMGWLWIFGAALGQCLGYSSQQQRVFFLQPPGQSQLQASYVEFRPSQGCSPGYRDHKG
YTGRCVPCNCGNSNQCQDGSIGVNCQHNTAGEHCERCQEGYGNVHGSCRACPCPHNTSFATGCVVN
GGDVRCSCKAGYTGTCERCAPGYFGNPQKFGGSCQPCSCNSNGLQSGSCHPLTGDICINQEPKDS
DDCDSVMTLLNLDLATMGEQLRLVKSQQLGLSASAGLLEQMRHMETQAKDLRNQLLNYSRAISNHG
KIEGLERELTDLNQEFETLQEKAQVNSRKAQTLNANNVNRAQSAKELDVKIKNVIRNVHMLNRIR
TWQKTHQG ENNGLANSIRDLSNEYEAKLSDLRARLQEAQAQAKQANGLNQENERALGAIQRQVKE
INLSQSDFTKYL TADSSLLQTNIALQLMEKSQKEYEKLAAASLNEARQELSDKVREL SRSAGK
TSLVEAEKHARSLQELAKQ LEEIKRNASGDELVRCVDAATAYENILNAIKAEDAANRAASASES
ALQTVIKEDLPRKAKTSSNSDK LLNEAKMTQKCLKQEVSPALNQLQTLNIVTVQKEVIDTNLT
TLRDGLHGIQRGDIDAMISSAKSMVRKA NDIITDEVLDGLNPIQTDVERIKDQYGRTO
NEDFKKALTDADNSVNKLTKNLPDLWRKIESINQQLPLGN ISDNMDRIREL IQQARDAASK
VAVPMRFNGKSGVEVRLPNDLEDLKGYSLSLFLQRPNSRENGGTENMF VMYLGNKDASRDY
IGMAVVDGQLTCVYNLGDREAEQVDQILTKSETKEAVMDRVKFQRIYQFARLNYTK GATSS
KPETPGVYDMDGRNSNTLLNLDPENNVFVYGGYPPDFKLPSRSLFPPYKGCIELDDL NENV
LSLYNFKKTFNLNTEVEPCRRRKEESDKNYFEGTGYARVPTQPHAPIPTFGQTIQT TVDR
GLLFFAENGDRFI SLNIEDGKLMVRYKLNSLPKERGVGDAINNGRDHSIQIKIGKLQKRM
WINVDVQNTIIDGEVDFDSTYY LGGIPIAIRERFNISTPAFRGCMKNLKKTSKVRLNDT
VGVTKKCEDWKLVRSAFSRGGQLSFTDLGL PPTDHLQASFGFTFPQSGILLDHQWT
RNLQVTLLEDGYIELSTSDSGSPIFKSPQTYMDGLLHYVSVIS DNSSLRLIIDQLLRNS
KRLKHISSSRQSLRLGGSNFEGCISNVFVQRLSLSPEVLDLTSNLSKRDVSLG GC
SLNKPPFLMLLKGSTRFNKTKTFRINQLQDTPVASPRSVKVVQDACSPKPTQANHGAL
QFGDIPTSHLLFKLPQELLKPRSQFAVDMQTTSSRGLVFHTGKNSFMALYLSKGR
LVFALGTGDKKLRKSKKEKND GKWHTVVFVGHGDKGRLVVDGLRAREGLSPGNST
ISIRAPVYLGSPSPGKPKSLPTNSFVGLKNFQLDS KPLYTPSSSFGVSSCLGGPLE
KGIYFSEEGHVLAHSVLLGPEFKLVFSIRPRSLTGILIHIGSQPGKH LCVYLEAGK
V TASMSDAGGTTSTSVTPKQSLCDGQWHSVAVTIKQHILHLELDTDSSYTAGQIP
PPPASTQEPLHLGGAPANLTTLRIPVWKSFFGCLRNIHVNHIPVPVTEALEVQGPV
SLNGCPDQ
```

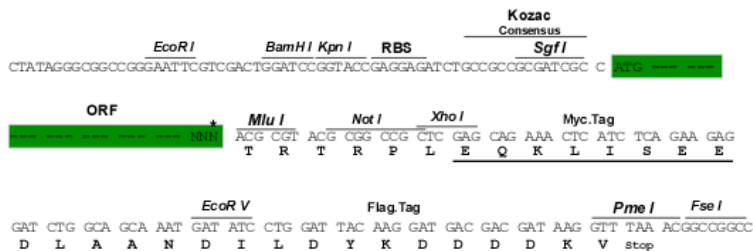
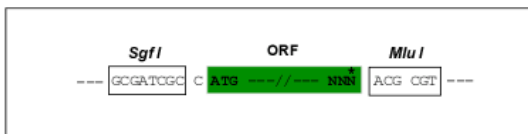
TRTRPLEQKLI SEEDLAANDILDYKDDDDKV

Restriction Sites:

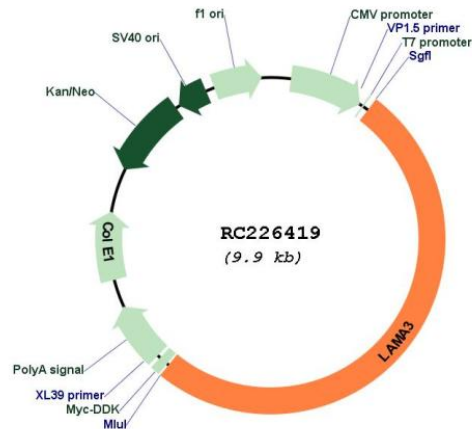
Sgfl-MluI

Cloning Scheme:

Cloning sites used for ORF Shuttling:



* The last codon before the Stop codon of the ORF

Plasmid Map:


ACCN: NM_001127718

ORF Size: 5004 bp

OTI Disclaimer: The molecular sequence of this clone aligns with the gene accession number as a point of reference only. However, individual transcript sequences of the same gene can differ through naturally occurring variations (e.g. polymorphisms), each with its own valid existence. This clone is substantially in agreement with the reference, but a complete review of all prevailing variants is recommended prior to use. [More info](#)

OTI Annotation: This clone was engineered to express the complete ORF with an expression tag. Expression varies depending on the nature of the gene.

Components: The ORF clone is ion-exchange column purified and shipped in a 2D barcoded Matrix tube containing 10ug of transfection-ready, dried plasmid DNA (reconstitute with 100 ul of water).

Reconstitution Method:

1. Centrifuge at 5,000xg for 5min.
2. Carefully open the tube and add 100ul of sterile water to dissolve the DNA.
3. Close the tube and incubate for 10 minutes at room temperature.
4. Briefly vortex the tube and then do a quick spin (less than 5000xg) to concentrate the liquid at the bottom.
5. Store the suspended plasmid at -20°C. The DNA is stable for at least one year from date of shipping when stored at -20°C.

RefSeq: [NM_001127718.1](#), [NP_001121190.1](#)

RefSeq ORF: 5007 bp

Locus ID: 3909

UniProt ID: [Q16787](#)

Cytogenetics:	18q11.2
Protein Families:	Druggable Genome, Secreted Protein
Protein Pathways:	ECM-receptor interaction, Focal adhesion, Pathways in cancer, Small cell lung cancer
MW:	183.9 kDa

Gene Summary: The protein encoded by this gene belongs to the laminin family of secreted molecules. Laminins are heterotrimeric molecules that consist of alpha, beta, and gamma subunits that assemble through a coiled-coil domain. Laminins are essential for formation and function of the basement membrane and have additional functions in regulating cell migration and mechanical signal transduction. This gene encodes an alpha subunit and is responsive to several epithelial-mesenchymal regulators including keratinocyte growth factor, epidermal growth factor and insulin-like growth factor. Mutations in this gene have been identified as the cause of Herlitz type junctional epidermolysis bullosa and laryngoonychocutaneous syndrome. Alternative splicing and alternative promoter usage result in multiple transcript variants. [provided by RefSeq, Dec 2014]