

Product datasheet for **RC226412**

BRG1 (SMARCA4) (NM_001128846) Human Tagged ORF Clone

Product data:

Product Type:	Expression Plasmids
Product Name:	BRG1 (SMARCA4) (NM_001128846) Human Tagged ORF Clone
Tag:	Myc-DDK
Symbol:	SMARCA4
Synonyms:	BAF190; BAF190A; BRG1; CSS4; hSNF2b; MRD16; RTPS2; SNF2; SNF2-beta; SNF2L4; SNF2LB; SWI2
Vector:	pCMV6-Entry (PS100001)
E. coli Selection:	Kanamycin (25 ug/mL)
Cell Selection:	Neomycin
ORF Nucleotide Sequence:	>RC226412 representing NM_001128846 Red=Cloning site Blue=ORF Green=Tags(s)

TTTTGTAATACGACTCACTATAGGGCGGCCGGGAATTCGTCGACTGGATCCGGTACCGAGGAGATCTGCC
GCC**CGATCGCC**

ATGTCCACTCCAGACCCACCCCTGGGCGGAACCTCGGCCAGGTCTTCCCCGGGCCCTGGCCCTTCCC
CTGGAGCCATGCTGGGCCCTAGCCCGGGTCCCTCGCCGGGCTCCGCCACAGCATGATGGGGCCAGCCC
AGGGCCGCCCTCAGCAGGACACCCCATCCCCACCCAGGGGCTGGAGGGTACCCTCAGGACAACATGCAC
CAGATGCACAAGCCCATGGAGTCCATGCATGAGAAGGGCATGTCGGACGACCCCGCTACAACCAGATGA
AAGGAATGGGGATGCGGTGAGGGGCCATGCTGGGATGGGGCCCCGCCAGCCCATGGACCAGCACTC
CCAAGGTTACCCCTCGCCCTGGGTGGCTCTGAGCATGCCTCTAGTCCAGTTCAGCCAGTGGCCCGTCT
TCGGGGCCCCAGATGTCTTCCGGGCCAGGAGGTGCCCCGCTGGATGGTGTGACCCCAAGCCTTGGGGC
AGCAGAACCGGGGCCAACCCCATTTAACCAGAACCAGCTGCACCAGCTCAGAGCTCAGATCATGGCCTA
CAAGATGCTGGCCAGGGGCGAGCCCTCCCCGACCACCTGCAGATGGCGGTGCAGGGCAAGCGGCCGATG
CCCGGGATGCAGCAGCAGATGCCAACGCTACCTCCACCCTCGGTGTCCGCAACAGGACCCGGCCCTGGCC
CTGGCCCTGGCCCCGGCCCGGTCCCGGCCCGGCACCTCAAATTACAGCAGGCCTCATGGTATGGGAGG
GCCCAACATGCCTCCCCAGGACCCTCGGGCGTGCCCCCGGGATGCCAGGCCAGCCTCCTGGAGGGCCT
CCCAAGCCCTGGCCTGAAGGACCATGGCGAATGCTGCTGCCCCACGAGCACCCCTCAGAAGCTGATTC
CCCCGAGCCAACGGGCGGCCCTTCCCCGCGCCCCCTGCGTCCACCCGCCGCTCGCCGATGATGCC
ACCGCAGACCCAGTCCCCGGGCGAGCCGCCAGCCCGGCCCATGGTGCCTACTGCACCAGAAGCAGAGC
CGCATACCCCCATCCAGAAGCCGCGGGGCTCGACCCTGTGGAGATCCTGCAGGAGCGGAGTACAGGC
TGCAGGCTCGCATCGCACACCGAATTCAGGAACCTGAAAACCTTCCCGGGTCCCTGGCCGGGATTTGCG
AACCAAAGCGACCATTGAGCTCAAGGCCCTCAGGCTGCTGAACTTCCAGAGGCAGCTGCGCCAGGAGGTG
GTGGTGTGCATGCGGAGGGACACAGCGCTGGAGACAGCCCTCAATGCTAAGGCCTACAAGCGCAGCAAGC
GCCAGTCCCTGCGGAGGCCCGCATCACTGAGAAGCTGGAGAAGCAGCAGAAGATCGAGCAGGAGCGCAA
GCGCCGCGAGAAGCACCAGGAATACCTCAATAGCATTCTCCAGCATGCCAAGGATTTCAAGGAATATCAC



[View online »](#)

AGATCCGTCACAGGCAAAATCCAGAAGCTGACCAAGGCAGTGGCCACGTACCATGCCAACACGGAGCGGG
 AGCAGAAGAAAGAGAACGAGCGGATCGAGAAGGAGCGCATGCGGAGGCTCATGGCTGAAGATGAGGAGGG
 GTACCGCAAGCTCATCGACCAGAAGAAGGACAAGCGCCTGGCCTACCTCTTGACGAGACAGACGAGTAC
 GTGGCTAACCTCACGGAGCTGGTGCAGCAGCACAAGGCTGCCAGGTGCGCAAGGAGAAAAAGAAAA
 AGAAAAAGAAAGGCAGAAAAATGCAGAAGGACAGACGCCTGCCATTGGGCCGGATGGCGAGCCTCTGGA
 CGAGACCAGCCAGATGAGCGACCTCCCGGTGAAGGTGATCCACGTGGAGAGTGGGAAGATCCTCACAGGC
 ACAGATGCCCCCAAAGCCGGCAGCTGGAGCCCTGGCTCGAGATGAACCCGGGGTATGAAGTAGCTCCGA
 GGTCTGATAGTGAAGAAAGTGGCTCAGAAGAAGGAAGAGGAGGAGGAGGAAGAGCAGCCGACGGCAGC
 ACAGCCTCCACCTGCCGTGGAGGAGAAGAAGATTCCAGATCCAGACAGCGATGACGTCTCTGAG
 GTGGACGCGCGGCACATCATTGAGAATGCCAAGCAAGATGTCGATGATGAATATGGCGTGTCCAGGCC
 TTGCACGTGGCCTGCAGTCTACTATGCCGTGGCCATGCTGTCAGTGCAGAGAGTGGACAAGCAGTCAAG
 GCTTATGGTCAATGGTGTCTCAAACAGTACCAGATCAAAGGTTTGGAGTGGCTGGTGTCCCTGTACAAC
 AACACCTGAACGGCATCCTGGCCGACGAGATGGCCTGGGAAGACCATCCAGACCATCGCGCTCATCA
 CGTACCTCATGGAGCACAACGCATCAATGGGCCCTTCTCATCATCGTGCCTCTCTCAACGCTGTCCAA
 CTGGGCGTACGAGTTTGACAAGTGGGCCCTCCGTGGTGAAGGTGCTTACAAGGGATCCCGAGCAGCA
 AGACGGGCCTTTGTCCCCAGCTCCGGAGTGGGAAGTTCAACGTCTTGCTGACGAGTACGAGTACATCA
 TCAAAGACAAGCACATCCTCGCCAAGATCCGTTGGAAGTACATGATTGTGGACGAAGGTCACCGCATGAA
 GAACCACCACTGCAAGCTGACGCAGGTGCTCAACACGCACTATGTGGACCCCGCCGCTGCTGCTGACG
 GGCACACCGCTGCAGAACAAGCTTCCGAGCTCTGGGCGTGTCAACTTCTGCTGCCACCATCTTCA
 AGAGCTGCAGCACCTTCGAGCAGTGGTTAACGCACCCTTGGCATGACCGGGAAAAAGGTGGACCTGAA
 TGAGGAGGAAACCATTCTCATATCCGGCGTCTCCACAAAGTGTGCGGCCCTTCTGCTCCGACGACTC
 AAGAAGGAAGTCGAGGCCAGTTGCCGAAAAGGTGGAGTACGTATCAAGTGCAGATGTCTGGCTGC
 AGCGAGTGTCTACCGCCACATGCAGGCCAAGGCGTGTGCTGACTGATGGCTCCGAGAAGCAAGAA
 GGGCAAAGGCGGCACCAAGACCTGATGAACACCATCATGCAGCTGCGGAAGATCTGCAACCACCCCTAC
 ATGTTCCAGCACATCGAGGAGTCTTTTCCGAGCACTTGGGGTCACTGGCGCATTGTCCAAGGGCTGG
 ACCTGTACCGAGCCTCGGGTAAATTTGAGCTTCTTGATAGAATCTTCCCAAACCTCCGAGCAACCAACCA
 CAAAGTGTGCTGTTCTGCCAAATGACCTCCCTCATGACCATCATGGAAGATTACTTTGCGTATCGCGGC
 TTTAAATACCTCAGGCTTGATGGAACCACGAAGGCGGAGGACCGGGCATGCTGCTGAAAACCTTCAACG
 AGCCCGGCTCTGAGTACTTCTGCTCAGCACCCGGCTGGGGGCTCGGCTGACCTCCAGTC
 GGCAGACACTGTGATCATTTTTGACAGCGACTGGAATCCTCACCAGGACCTGCAAGCGCAGGACCGAGCC
 CACCGCATCGGGCAGCAGAACGAGGTGCGTGTGCTCCGCTCTGCACCGTCAACAGCGTGGAGGAGAAGA
 TCCTAGCTGCAGCCAAGTACAAGCTCAACGTGGACCAGAAGGTGATCCAGGCCGGCATGTTGACACAGAA
 GTCCTCCAGCCATGAGCGGCGCGCTTCTGACAGCCATCCTGGAGCACGAGGAGCAGGATGAGGAGGAA
 GACGAGGTGCCCGACGACGAGACCGTCAACCAGATGATCGCCCGCACGAGGAGGAGTTTGTATCTGTTCA
 TGCGCATGGACCTGGACCGCAGGCGGAGGAGGCCGCAACCCCAAGCGGAAGCCGCGCCTCATGGAGGA
 GGACGAGCTCCCTCGTGGATCATCAAGGACGACGCGGAGGTGGAGCGGTGACCTGTGAGGAGGAGGAG
 GAGAAGATGTTCCGGCCGTGGCTCCCGCCACCGCAAGGAGGTGACTACAGCGACTCACTGACGGAGAAGC
 AGTGGCTCAAGACCTGAAGGCCATCGAGGAGGCGACGCTGGAGGAGATCGAAGAGGAGGTCCGGCAGAA
 GAAATCATCACGGAAGCGCAAGCGAGACGACGCGCGGCTCCTCCACCCGACCAACGACCCCGCAGC
 CGCGACAAGGACGACGAGAGCAAGAAGCAGAAGAAGCGCGGGCGGCCCTGCGGAGAAACTCTCCCTTA
 ACCCACCAACCTCACCAGAAGATGAAGAAGATTGTGGATGCCGTGATCAAGTACAAGGACAGCAGTGG
 ACGTCACTCAGCGAGGTCTTATCCAGCTGCCCTCGCGAAAGGAGCTGCCGAGTACTACGAGCTCATC
 CGCAAGCCCGTGGACTTCAAGAAGATAAAGGAGCGCATTGCAACCACAAGTACCGCAGCCTCAACGACC
 TAGAGAAGGACGTATGCTCCTGTGCCAGAACGCACAGACCTTCAACCTGGAGGGCTCCCTGATCTATGA
 AGACTCCATCGTCTTGCAGTCGGTCTTACCAGCGTGCAGCAGAAAAATCGAGAAGGAGGATGACAGTGAA
 GCGGAGGAGAGTGAAGGAGGAAAGAGGGCGAGGAGGAAGGCTCCGAATCCGAATCTCGTCCGTCAAAG
 TGAAGATCAAGCTTGGCCGGAAGGAGAAGGCACAGGACCGGCTGAAGGGCGGCGGCGGCGGAGCCG
 AGGGTCCCGAGCCAAGCCGGTCTGAGTGACGATGACAGTGAAGGAGAACAGAGGAGGACCGCTCAGGA
 AGTGGCAGCGAAGAAGAC

ACGCGTACGCGGCCGCTCGAGCAGAACTCATCTCAGAAGAGGATCTGGCAGCAAATGATATCCTGGATT
 ACAAGGATGACGACGATAAGGTTTAA

Protein Sequence: >RC226412 representing NM_001128846
 Red=Cloning site Green=Tags(s)

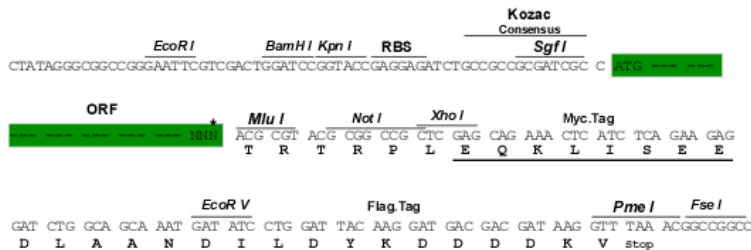
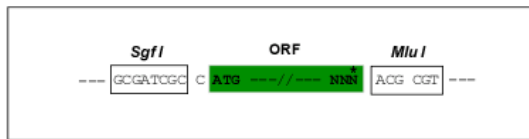
MSTDPPLGGTPRPGSPGPGSPGAMLGPSGPGSPGSAHSMGPPSPGPPSAGHP IPTQGGPGYPQDNMH
 QMHKPMESMHEKGMDDPRYNQMKGMGMRSGGHAGMGPPSPMDQHSQGYPSPLGGSEHASSVPVPSGPGS
 SGPQMSSGPGGAPLDGADPQALGQONRGPTPFNQNLHQLRAQIMAYKMLARGQPLPDHLQMAVQGKRPM
 PGMQQQMPTLPSPSVSATGPGPGPGPGPGPGPAPPNYSRPHGMGGPNMPPPGSPGVPMPGMPGQPPGGP
 PKPWPEGPMANAAAPTSTPQKLIPPQTPGRPSAPPVPPAASPMPPQTQSPGQPAQPAPMVPLHQKQS
 RITPIQKPRGLDPEILQEREYRLQARI AHRIQELENLPGSLAGDLRTKATIELKALRLLNFQRQLRQEV
 VVCMRRDTALETALNAKAYKRSKRQSLREARITEKLEKQKQIEQERKRRQKHQEYLNLSILQHAQDFKEYH
 RSVTGKIQLTKAVATYHANTEREQKKENERIEKERMRLMADEEGYRKLIDQKKDKRLAYLLQQTDEY
 VANLTELVRQHKAAQVAKEKKKKKKKAENAEGQTPAIGPDGEPLDETSQMSDLPVKVIHVESGKILTG
 TDAPKAGLEAWLEMNPGYEVAPRSDSEESGSEEEEEEEEEEQPAAQPPTLPVEEKKKIPDPDSDVSE
 V DARHIIENAKQVDDEYGVSQLARGLQSYAVAHAVTERVDKQSALMVNGVLKQYQIKGLEWLVSLYN
 NNLNGILADEMGLKTIQTIALITYLMEHKRINGPFLIIIVPLSTLSNWAYEFDKWAPSVVKVSYKGPAA
 RRAFPVQLRSGKFNVLTTYEYI IKDKHILAKIRWKYMI VDEGHRMKNHHCKLTQVLNTHYVAPRLLLLT
 GTPLQNKLP ELWALLN FLLPTIFKSCSTFEQWFNAPFAMTGEKVDLNEEETILIRRLHKVLRPFLRLR
 KKEVEAQLPEKVEYVIKCDMSALQRVLYRHMQAKGVLLTDGSEKDKKGGTKTLMNTIMQLRKICNHPY
 MFQHIIEESFSEHLGFTGGIVQGLDLYRASGKFELLDRIPLKLRATNHNKVLFFCQMTSLMTIMEDYFAYRG
 FKYLRLDGTTKAEDRGMLLKTFFNEPGSEYFIFLLSTRAGGLGNLQSADTVIIFDSDWNP HQDLQAQDRA
 HRIGQQNEVRVRLRLCTVNSVEEKILAAAKYKLNVDQKVIQAGMFDQKSSSHERRAFLQAILEHEEQDEEE
 DEVPDDET V NQMIARHEEEFDL FMRMDLDRRREEARNPKRKPRLMEDELPSWIKDDAEVERLTCEEEE
 EKMFGRGSRHRKEVDYSDSLTEKQWLKTLKAIIEEGTLEEIEEEVQRKSSRKRKRSDAGSPTTSTRS
 RDKDDESKKQKGRPPAEKLSNPNNLTKMKKIVDAVIKYKSSGRQLSEVFIQLPSRKELPEYVELI
 RKPVDFFKIKERIRNHKYRSLNLDKDVMLLCQNAQTFNLEGLIYEDSIVLQSVFTSVRQKIEKEDDSE
 GEESEEEEEEGESESESRSVKVVIKLRKEKAQDRKGGRRRPSRGSRAKPVVSDDDSEEEQEEDRSG
 SGSEED

TRTRPLEQKLISEEDLAANDILDYKDDDDKV

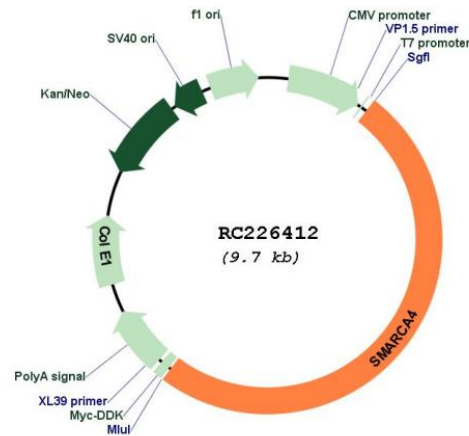
Restriction Sites:
 Cloning Scheme:

SgfI-MluI

Cloning sites used for ORF Shuttling:



* The last codon before the Stop codon of the ORF

Plasmid Map:


ACCN: NM_001128846

ORF Size: 4848 bp

OTI Disclaimer: The molecular sequence of this clone aligns with the gene accession number as a point of reference only. However, individual transcript sequences of the same gene can differ through naturally occurring variations (e.g. polymorphisms), each with its own valid existence. This clone is substantially in agreement with the reference, but a complete review of all prevailing variants is recommended prior to use. [More info](#)

OTI Annotation: This clone was engineered to express the complete ORF with an expression tag. Expression varies depending on the nature of the gene.

Components: The ORF clone is ion-exchange column purified and shipped in a 2D barcoded Matrix tube containing 10ug of transfection-ready, dried plasmid DNA (reconstitute with 100 ul of water).

Reconstitution Method:

1. Centrifuge at 5,000xg for 5min.
2. Carefully open the tube and add 100ul of sterile water to dissolve the DNA.
3. Close the tube and incubate for 10 minutes at room temperature.
4. Briefly vortex the tube and then do a quick spin (less than 5000xg) to concentrate the liquid at the bottom.
5. Store the suspended plasmid at -20°C. The DNA is stable for at least one year from date of shipping when stored at -20°C.

RefSeq: [NM_001128846.2](#)

RefSeq ORF: 4851 bp

Locus ID: 6597

UniProt ID: [P51532](#)

Cytogenetics: 19p13.2

Protein Families: Druggable Genome, Transcription Factors

MW: 181.4 kDa

Gene Summary: The protein encoded by this gene is a member of the SWI/SNF family of proteins and is similar to the brahma protein of *Drosophila*. Members of this family have helicase and ATPase activities and are thought to regulate transcription of certain genes by altering the chromatin structure around those genes. The encoded protein is part of the large ATP-dependent chromatin remodeling complex SNF/SWI, which is required for transcriptional activation of genes normally repressed by chromatin. In addition, this protein can bind BRCA1, as well as regulate the expression of the tumorigenic protein CD44. Mutations in this gene cause rhabdoid tumor predisposition syndrome type 2. Multiple transcript variants encoding different isoforms have been found for this gene. [provided by RefSeq, May 2012]