

Product datasheet for **RC226404**

CC2D2A (NM_020785) Human Tagged ORF Clone

Product data:

Product Type: Expression Plasmids
Product Name: CC2D2A (NM_020785) Human Tagged ORF Clone
Tag: Myc-DDK
Symbol: CC2D2A
Synonyms: COACH2; JBTS9; MKS6
Mammalian Cell Selection: Neomycin
Vector: pCMV6-Entry (PS100001)
E. coli Selection: Kanamycin (25 ug/mL)
ORF Nucleotide Sequence: >RC226404 representing NM_020785
 Red=Cloning site Blue=ORF Green=Tags(s)

TTTTGTAATACGACTCACTATAGGGCGGCCGGAATTCGTCGACTGGATCCGGTACCGAGGAGATCTGCC
 GCC**CGATCGCC**

ATGAATCCAGGGAAGAAAAAGTAAAAATAATTACAGAGGAGTTCATTGAAAATGATGAGGATGCAGACA
 TGGGAAGACAGAATAAGAACTCAAAGGTTCAAGACAGCAAGAAAGAAACAGAAGCCAACCTCTTTCTC
 CCGAGCCTGCTGGCAGATCCTCCCCACCTCTCCGAGGAGTCCCTCCTAGGCTGGGAGCATCCCGTG
 CAGGGTAAATCTTTCAAGCCACCAACTGCTGTCCCAAGGAAATGGTGTCCGAAAAATCCACCTTGGC
 AACCCCAAGGAGCCTGTGCAGGAGAGCCCAAGACCCGCTCCTGAGTATGACAGTCCGGAGAGGCCAC
 GGAGAGAGCTGGTTGT

ACGCGTACGCGGCCGCTCGAGCAGAAACTCATCTCAGAAGAGGATCTGGCAGCAAATGATATCCTGGATT
 ACAAGGATGACGACGATAAGGTTTAA

Protein Sequence: >RC226404 representing NM_020785
 Red=Cloning site Green=Tags(s)
 MNPREEKVKIITEEF IENDEAD MGRQNKNSKVR RQPRKKQKPTPFSRACWQILPHLSAGVPLLGW EHPV
 QKGSFQATNCCPQNGVRKIPPWQPPGACAGGAQDPPPEYD SPERPTERAGC

TRTRPLEQKLI SEEDLAANDILDYKDDDDKV

Restriction Sites: Sgfl-MluI



Cloning Scheme:


ACCN: NM_020785

ORF Size: 366 bp

OTI Disclaimer: Due to the inherent nature of this plasmid, standard methods to replicate additional amounts of DNA in E. coli are highly likely to result in mutations and/or rearrangements. Therefore, OriGene does not guarantee the capability to replicate this plasmid DNA. Additional amounts of DNA can be purchased from OriGene with batch-specific, full-sequence verification at a reduced cost. Please contact our customer care team at custsupport@origene.com or by calling 301.340.3188 option 3 for pricing and delivery.

The molecular sequence of this clone aligns with the gene accession number as a point of reference only. However, individual transcript sequences of the same gene can differ through naturally occurring variations (e.g. polymorphisms), each with its own valid existence. This clone is substantially in agreement with the reference, but a complete review of all prevailing variants is recommended prior to use. [More info](#)

OTI Annotation: This clone was engineered to express the complete ORF with an expression tag. Expression varies depending on the nature of the gene.

Components: The ORF clone is ion-exchange column purified and shipped in a 2D barcoded Matrix tube containing 10ug of transfection-ready, dried plasmid DNA (reconstitute with 100 ul of water).

Reconstitution Method:

1. Centrifuge at 5,000xg for 5min.
2. Carefully open the tube and add 100ul of sterile water to dissolve the DNA.
3. Close the tube and incubate for 10 minutes at room temperature.
4. Briefly vortex the tube and then do a quick spin (less than 5000xg) to concentrate the liquid at the bottom.
5. Store the suspended plasmid at -20°C. The DNA is stable for at least one year from date of shipping when stored at -20°C.

RefSeq: [NM_020785.2](#), [NP_065836.2](#)

RefSeq Size: 1682 bp

RefSeq ORF: 369 bp

Locus ID: 57545

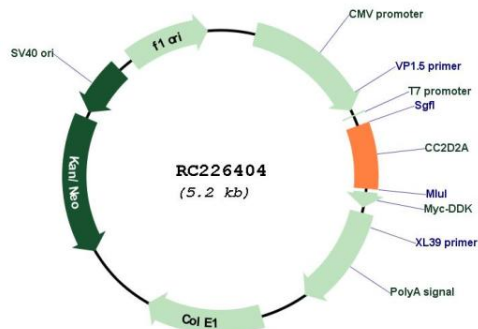
UniProt ID: [Q9P2K1](#)

Cytogenetics: 4p15.32

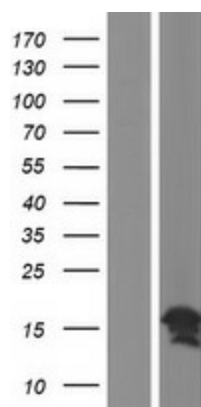
MW: 13.6 kDa

Gene Summary: This gene encodes a coiled-coil and calcium binding domain protein that appears to play a critical role in cilia formation. Mutations in this gene cause Meckel syndrome type 6, as well as Joubert syndrome type 9. Alternative splicing results in multiple transcript variants. [provided by RefSeq, Sep 2009]

Product images:



Circular map for RC226404



Western blot validation of overexpression lysate (Cat# [LY429637]) using anti-DDK antibody (Cat# [TA50011-100]). Left: Cell lysates from untransfected HEK293T cells; Right: Cell lysates from HEK293T cells transfected with RC226404 using transfection reagent MegaTran 2.0 (Cat# [TT210002]).