

Product datasheet for RC226398

RPTP mu (PTPRM) (NM_001105244) Human Tagged ORF Clone

Product data:

Product Type:	Expression Plasmids
Product Name:	RPTP mu (PTPRM) (NM_001105244) Human Tagged ORF Clone
Tag:	Myc-DDK
Symbol:	RPTP mu
Synonyms:	hR-PTPu; PTPRL1; R-PTP-MU; RPTPM; RPTPU
Mammalian Cell Selection:	Neomycin
Vector:	pCMV6-Entry (PS100001)
E. coli Selection:	Kanamycin (25 ug/mL)
ORF Nucleotide Sequence:	>RC226398 representing NM_001105244 Red=Cloning site Blue=ORF Green=Tags(s)

TTTTGTAATACGACTCACTATAGGGCGCCGGGAATTCGTCGACTGGATCCGGTACCGAGGAGATCTGCC
GCC**CGATCGCC**

ATGAGGGGACTTGGGACTTGCTGGCGACTTTGGCCGGACTTTTGCTAACTGCGGCGGGCGAGACGTTCT
CAGGTGGCTGCCTCTTTGATGAGCCGTATAGCACATGTGGATATAGTCAATCTGAAGGTGATGACTTCAA
TTGGGAGCAAGTGAACACCTTGACTAAACCGACTTCTGATCCATGGATGCCATCAGGTTCTTTTCATGCTG
GTGAATGCCTCTGGGAGACCTGAGGGGAGAGAGCCACCTGCTTACCCCAACTTAAAGAAAATGACA
CCCACTGCATCGATTTTCACTATTTTGTGTCCAGCAAGAGTAATCTCCTCCGGGGTTACTCAATGTCTA
CGTGAAGGTCAATAACGGGCCACTGGGGAATCCTATCTGGAATATATCTGGAGACCAACACGTACATGG
AACAGGGCAGAACTGGCCATTAGTACTTTCTGGCCTAACTTTTATCAGGTGATTTTTGAAGTGATAACT
CTGGACATCAAGGCTATCTCGCTATCGATGAGGTGAAGGTGTTAGGACATCCATGTACCAGGACTCCTCA
CTTCTGCGGATTGAGAAATGTGGAAGTTAATGCTGGCCAGTTTGCTACCTCCAGTGCAAGTCCATCGGC
AGGACCGTGGCAGGAGACAGGCTCTGGTTACAGGGCATTGATGTGCGAGATGCTCCTCTGAAGGAAATCA
AGGTGACCAGCTCCCGACGCTTATTGCTTCAATTAATGTTGTGAATACCACCAACGAGATGCTGGAAA
GTACCGCTGCATGATTCGCACTGAAGGAGGTGTTGGAATATCAAATATGCAGAGTTGGTAGTTAAAGAA
CCACCCGTTCTATTGCCCCACCTCAGCTCGCCTCTGTAGGAGCCACTACCTGTGGATACAGCTCAACG
CCAATCCATCAATGGGATGGGCCATTGTGGCCGAGAGGTGGAGTACTGCACGGCCAGTGGGAGCTG
GAATGACCGGCAGCCAGTTCGATTCCACGAGCTATAAAATTGGACACCTTGACCCAGATACAGAATATGAG
ATTAGTGTCTCCTGACCGCCAGGGAGGGTGGCACTGGCTCTCCTGGTCCAGCTCTCAGGACAAGAA
CAAAGTGTGCTGATCCCATGCGAGGCCAAGAAAAGTGAAGTAGTGGAGGTCAAATCTCGGCAAATCAC
TATCCGCTGGGAGCCATTTGGATATAATGTAACCTGTTGCCACAGTTATAATCTCACTGTCCACTACTGT
TACCAAGTTGGAGACAAGAACAAGTGCAGAGAAGAAGTAAAGCTGGGATACAGAAAAGTACACCCCTCAAC
ACAGGATCACTAACCTGTCACCATACCAATGTCAGTGTGAAACTGATCCTCATGAACCCAGAGGGCCG
GAAGGAAAGCCAAGAAGTCAATAGTGCAGACAGATGAAGACCTCCAGGTGCTGTTCCCACTGAATCCATA



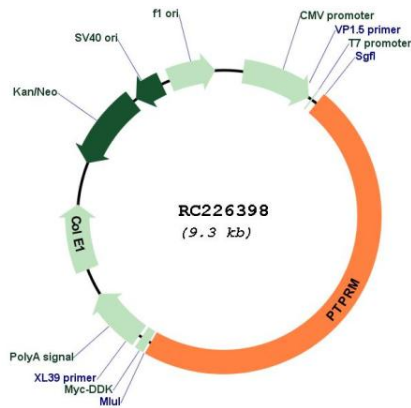
[View online »](#)

CAAGGAAGTACCTTTGAAGAGAAGATATTTCTTCAGTGGAGAGAACCAACTCAAACATATGGTGTAAATCA
CTTTATATGAGATCACCTACAAAGCAGTCAGTTCCCTTTGACCCAGAAATAGATTTATCCAATCAGAGTGG
AAGAGTTTCAAAGCTGGGAAATGAAACCCATTTTCTGTTTTTGGACTGTATCCGGGGACCACATACTCC
TTTACCATCCGAGCTAGCACAGCTAAGGGTTTTGGGCCTCCAGCAACAAACCAGTTCACCACCAAAATAT
CAGCACCTCTATGCCAGCTTATGAACTTGAGACACCTTTGAATCAAACCTGACAATACCGTGACAGTCAT
GCTGAAACCTGCCACAGCAGAGGAGCACCTGTCAAGTGTCTATCAAATAGTTGTTGAGGAAGAACCTCCT
CGAAGAACTAAAAAGACGACAGAAATCTTAAAGTGTACCCAGTGCCAATTCACCTCCAGAATGCTTCTC
TGCTGAACTCACAGTACTACTTTGCTGCAGAAATTCCTGCAGACAGCCTCCAAGCTGCGCAGCCTTTTAC
AATTGGTGATAATAAGACATATAATGGATACTGGAACACTCCCCTTCTCCCTATAAAAAGCTACAGAATT
TATTTCCAAGCTGCTAGTAGAGCCAATGGGAAACCAAAATAGACTGTGTCCAAGTGCCACAAAAGGAG
CTGCCACTCCGAAACCAGTCCCAGAACCAGAGAAACAGACAGACCATACAGTTAAAATTGCTGGAGTCAT
CGCGGGCATCTTGCTGTTCTGTGATTATTTCTTGGAGTTGTGTTGGTAATGAAGAAAAGGAAAACGGCC
AAGAAGCGGAAAGAGACCATGAGCAGCACCCGACAGGAGATGACTGTGATGGTGAACCAATGGACAAGA
GCTATGCTGAGCAGGGCACAACCTGCGACGAGGCTTTCTCATTGATGGACACGCACAATCTGAATGGGAG
ATCTGTGCTTACCATCGTCTTCAATGAAAACAAAATACACTGAGCAGCATCGGTGCCTAATTCCTAT
TACCCAGACCCATTTGTGCCAATGCAATTTAGTGCCAATAAATGATGAAACCCACACAATGGCCAGCG
ATACCAGCAGCCTGGTGCAGTCCCATACTTACAAGAAGCGAGAGCCGGCCGACGTGCCCTATCAGACTGG
GCAGCTCCACCCCGCCATCCGGGTGGCAGACCTCCTTCAGCACATCACACAGATGAAGTGTGCGGAGGGC
TACGGCTCAAGGAGGAATACGAGAGCTTCTTTGAAGGGCAGTCTGCACCATGGGACTCGGCTAAGAAAAG
ATGAGAACAGAATGAAGAACAGATACGGGAATATCATTGCATACGATCATTCCCAGTGAGGCTGCAGAC
AATAGAAGGAGACACAACTCAGACTATCAATGGCAATTATATCGATGGTTATCATCGACCCAATCAT
TACATTGCTACCAAGGGCCAATGCAGGAAACCATCTATGACTTCTGGAGGATGGTGTGGCAGAAAACA
CTGCAAGTATCATCATGGTGACCAATCTGTGGAAGTGGGAAGGGTCAAATGCTGCAAACTACTGGCCAGA
TGACACAGAGATATATAAAGACATTAAGTTACCCTAATAGAAAACAGAACTACTGGCAGAATATGTGATA
AGAACATTTGCTGTTGAAAAGAGAGGTGTGCATGAAATCCGAGAGATCAGACAGTTTCACTTCACTGGCT
GGCCGGATCATGGGGTCCCCTACCATGCCACCGCCTGCTGGGATTGCTGCGGCAAGTCAAGTCCAAGAG
CCCGCCAGTGACAGGCCACTGGTGGTGCAGTGCAGTGTGGTGCAGGGAGGACTGGCTGTTTCATCGTC
ATTGATATCATGTTGGACATGGCCGAAAGGGAAGGGTCTGAGACATCTACAACCTGCGTCAGGGAGCTGC
GGTCACGGAGGGTGAACATGGTGCAAACAGAGGAGCAGTATGTGTTTATCCACGATGCGATCCTGGAAGC
CTGTCTTTGTGGGACACCTCTGTGCCTGCTTCCAAGTTAGGTCTCTGTATTATGACATGAACAAACTG
GATCCACAGACAACTCAAGCCAGATTAAGAGGAATTCGGACGCTAACATGGTGACACCAACGCTGC
GAGTAGAGGACTGCAGCATCGCACTGTTGCCCCGGAACCATGAGAAAAACCGGTGCATGGACATCCTGCC
CCCAGACCGCTGCCTGCCCTTCTCATCACCATCGATGGGGAGAGCAGCAACTACATCAATGCTGCCCTC
ATGGACAGCTATAAACAGCCTTCAGCTTTTATAGTCACCCAGCATCCTTTGCCAAACACAGTGAAAGACT
TTTGGAGACTGGTCTGGATTATCACTGCACATCCGTAGTTATGCTAAATGATGTGGATCCTGCCAGTT
GTGTCCACAGTACTGGCCAGAAAACGGAGTACACAGACACGGCCCATCCAGGTGGAATTTGCTCTGCT
GACCTGGAAGAGGACATCATCAGCAGGATATCCGCATTTACAATGCCGCCAGACCCCAAGATGGATATC
GGATGGTGCAGCAATCCAGTTCCTGGGCTGGCCGATGTACAGGGACACACCAGTGTCTAAGCGCTCCTT
CTTGAAGCTCATTGCCAGGTGGACAAGTGGCAAGAGGAGTACAATGGCGGGGAAGGCCACGGTTGTG
CACTGCTTGAACGGGGGAGGCCGAGTGGGACGTTCTGCCCATCAGCATCGTATGTGAGATGCTCCGGC
ACCAGAGAACCGTGGATGTCTTTCACGCTGTGAAGACACTGAGGAACAACAAGCCCAACATGGTGCACCT
CCTGGATCAGTACAAGTTCTGCTACGAGGTGGCCCTGGAATACTTGAATTCTGGC

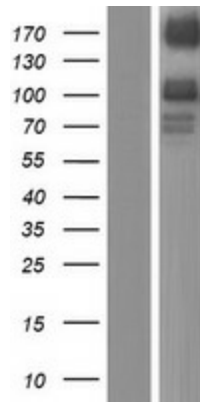
ACGCGTACGCGGCCGCTCGAGCAGAACTCATCTCAGAAGAGGATCTGGCAGCAATGATATCCTGGATT
ACAAGGATGACGACGATAAGGTTTAA

OTI Disclaimer:	The molecular sequence of this clone aligns with the gene accession number as a point of reference only. However, individual transcript sequences of the same gene can differ through naturally occurring variations (e.g. polymorphisms), each with its own valid existence. This clone is substantially in agreement with the reference, but a complete review of all prevailing variants is recommended prior to use. More info
OTI Annotation:	This clone was engineered to express the complete ORF with an expression tag. Expression varies depending on the nature of the gene.
Components:	The ORF clone is ion-exchange column purified and shipped in a 2D barcoded Matrix tube containing 10ug of transfection-ready, dried plasmid DNA (reconstitute with 100 ul of water).
Reconstitution Method:	<ol style="list-style-type: none">1. Centrifuge at 5,000xg for 5min.2. Carefully open the tube and add 100ul of sterile water to dissolve the DNA.3. Close the tube and incubate for 10 minutes at room temperature.4. Briefly vortex the tube and then do a quick spin (less than 5000xg) to concentrate the liquid at the bottom.5. Store the suspended plasmid at -20°C. The DNA is stable for at least one year from date of shipping when stored at -20°C.
RefSeq:	NM_001105244.2
RefSeq ORF:	4398 bp
Locus ID:	5797
UniProt ID:	P28827
Cytogenetics:	18p11.23
Protein Families:	Druggable Genome, Phosphatase, Transmembrane
Protein Pathways:	Adherens junction, Cell adhesion molecules (CAMs)
MW:	165.06 kDa
Gene Summary:	The protein encoded by this gene is a member of the protein tyrosine phosphatase (PTP) family. PTPs are known to be signaling molecules that regulate a variety of cellular processes including cell growth, differentiation, mitotic cycle, and oncogenic transformation. This PTP possesses an extracellular region, a single transmembrane region, and two tandem catalytic domains, and thus represents a receptor-type PTP. The extracellular region contains a meprin-A5 antigen-PTP mu (MAM) domain, an Ig-like domain and four fibronectin type III-like repeats. This PTP has been shown to mediate cell-cell aggregation through the interaction with another molecule of this PTP on an adjacent cell. This PTP can interact with scaffolding protein RACK1/GNB2L1, which may be necessary for the downstream signaling in response to cell-cell adhesion. Alternative splicing results in multiple transcripts encoding distinct isoforms. [provided by RefSeq, Jul 2008]

Product images:



Circular map for RC226398



Western blot validation of overexpression lysate (Cat# [LY426233]) using anti-DDK antibody (Cat# [TA50011-100]). Left: Cell lysates from untransfected HEK293T cells; Right: Cell lysates from HEK293T cells transfected with RC226398 using transfection reagent MegaTran 2.0 (Cat# [TT210002]).