

Product datasheet for RC226391

PRAGMIN (PRAG1) (NM_001080826) Human Tagged ORF Clone

Product data:

Product Type:	Expression Plasmids
Product Name:	PRAGMIN (PRAG1) (NM_001080826) Human Tagged ORF Clone
Tag:	Myc-DDK
Symbol:	PRAGMIN
Synonyms:	NACK; PEAK2; PRAGMIN; SGK223
Mammalian Cell Selection:	Neomycin
Vector:	pCMV6-Entry (PS100001)
E. coli Selection:	Kanamycin (25 ug/mL)
ORF Nucleotide Sequence:	>RC226391 representing NM_001080826 Red=Cloning site Blue=ORF Green=Tags(s)

TTTTGTAATACGACTCACTATAGGGCGGCCGGAATTCGTCGACTGGATCCGGTACCGAGGAGATCTGCC
GCC**CGATCGCC**

ATGCACCAGACCCTCTGCCTGAACCCCGAGAGCCTGAAAATGTCTGCGTGCAGTGACTTTGTGGAGCACA
TCTGGAACCCGGGTCTGCAAGAACTGCTTCTGCCTGCGGAGCGACCACCAGCTGGTGGCCGGCCCTCC
CCAGCCCAGAGCGGGCAGCCTGCCCTCCACCGCGCTGCTCCAGGCCTGAGAACTGCCGCTGGAA
GATGAAGGTGTGAACAGCTCACCTTACTCCAAGCCACAATTGCCGTGAAGCCCACCATGATGAGCTCCG
AGGCTCTGATGTGTGGACAGAGGCCAACCTGAGTGCCGAAGTCTCGCAGTTCATCTGGAGACGAGCCCC
TGGCAAGCTCCCCCTCCGAAGCAGGAGGATGCCCGTCTACCTGGGCAGCTTCCGAGGTGTACAG
AAGCCTGCTGGTCCCTTACCTCCCTGATGGCAATTCTCGTGTCCCCAGCTTACACCATGGTCGGCC
TGCAACCTTGAGCCCCGCGGGGAGAGGAACATTGCCTTCCACCGGTGAGCTTCCCGGAGGAGAAGGC
TGTGCACAAAGAAAACCTCATTTCTTACCAAGACCGGCCCTCCACCCAGGAGAGCTTCCGCCAGAAA
CTGGCTGCCTTTGCTGGGACCACATCTGGCTGTACCAGGGCCCTGGGCCCTGCGGGAATCCCTGCCCT
CGGAGGATGACAGTGATCAAAGGTGCTCGCCCTCCGGGACAGCGAGGGTGGAGAGTACTGCTCCATCCT
GGACTGCTGCCCTGGGAGCCCTGTTGCCAAGGCTGCCTCCAGACTGCAGTTCCCGGGCAGGCATGGT
GGCAGGGACTGCTCACCCAGTGTGGAGCAGGGGAAGTGTCCGGGCCCGAGAGCAGGAGAAGCGGG
GCCCGAGCTTCCCCAAGGAGTGTGTAGCCAGGGCCCACTGCCACCCATCCTGCCTGGGCCCAAGAA
ACTGTCCCTCACCTCGGAGGCTGCCATTTCTTCCGACGGCCTCTTGTGGCAGCGGCAGCGGCAGCGGC
GCCAGTAGCCCTTCGTCCCCACCTCGAGAGTGATTACTGCTCCCTCATGAAGGAACCTGCCCCAGAGA
AGCAGCAGGACCCTGGCTGCCAGGGGTGACCCCTAGCAGATGCCTTGGGCTGACGGGGAGCCCCAGCC
CCCGGCCACCCCGGGAGGCTACACAGCCTGAACCCATCTATGCTGAGAGCACCAAGAGGAAGAAGGCA
GCTCCGGTGCCTTCCAAGTACAGGCCAAGATAGAACATGCAGCTGCTGCCAGGGCCAAGGCCAGGTAT
GCACAGGTAATGCCTGGGCCAGAAAGCAGCATCTGGCTGGGGCCGGGACAGCCAGACCCAACCTCCCA
GGTGTACGCCACCATCACAGTCATGGCGGCCACCCGGAAGAGGACCATCGGACGATCTACTGAGCAGC



[View online >](#)

CCTGACTCTGCAGTGGGGTGCAGTGGCCACGAGGGCCTGTGAGCCAGAACTCCGAGGTAGTGAAGAGG
AGACTTCGGCTGGGCAGGGGCTGAGCTCCAGGAAAGCCATGCTCACAGTGCCAGCGAGAGCAAGCCAA
GGAGAGGCCCGCCATTCCCCCAAGTTGTCCAAGAGTAGCCCTGTAGGGTCCCGGTGTACCCGTCTGCT
GGAGGGCCCCAGTGTACCCGCTGGCTGACCTTAGTGATGGGAGCTCTGGCGGCAGCAGCATTGGGCCCC
AGCCTCCATCCCAAGTCTGCTGACCCCGCTCCTTCTGCCGGACCAACGGTGTGCTATCAGTGACCC
ATCCAGGTGTCCCAGCTGCCGCTCGTCAGCCTCGAACAGAGGCGGCCAGGTTCCAGGCAGGCACC
TGGAGTCGTGAGTCCGGATAGAGGAAGAAGAGGAGGTGGAGCAGGAATTGCTGAGTCACAGCTGGGAA
GAGAGACCAAAAATGGCCCCACGGACATTCAAACCTCCACGACCTGGCACCGTCTCCACCCACAGATGG
CTCCTCTGGGCAGAACAGCAAAGTTGGGACCGGATGAGCAAATCCGCCTCTTTTGCCTTTGAGTCCCC
AAGGACAGAAGTGGGATTGAGACATTCTCACCTCCTCCTCCGCCTCCAAAGTCGCGGCACCTTCTAAAA
TGAACAAGAGCAGCTCTGATTTGAAAAAGTGAGCCAGGGCTCTGCAGAAAGCCTCAGCCATCCTTCAG
GGGTGTCCACGTGAGCTTACCACCGGCTCCACGGACAGCCTGGCCTCAGACTCTAGGACCTGCAGCGAT
GGAGGTCCCTCGTCTGAGCTGGCTACTCGCCACCAACAGCGGGAAGAAGCTCTTGTCCCGTCCGT
TTCCTTACAGGCTCCACTGAGGACGTGTCCCCAGTGGCCCCAGCAGCCCCCTCCACTCCCCAGAAAA
GATAGTGAGCCGGCAGCCTCTTACCAGGATGGCTTCTTCTGGACCAAGGCTCCCCAAGCCCGGAACA
GCAAGCCCAAGCTGAACCTAAGCCACTCGGAAACCAACGTCCACGACGAATCTCACTTTAGCTATTCGT
TGAGCCCCGGAACCGCCACCATCCTGTCTTCTCCTCTCCGATCCTCTGGAGAAAGCTTCAAAGGCAG
TGGCCACTGGCTTCCGGCAGCAGGGCTGGCGGGCAACAGAGGCGGCTGCGGGAGCCCTGGCCTCCAGTGC
AAAGGGGGCCCCCTCCGCCTCATCTCCAGCTGAGCGTGTCCAGTCAAGCCTCCACCGGAGCACCACGC
TTCAGTGCACGGTCTCCTGAGCAACATCAGCAGCAAGGAGGGCACCTATGCCAAGCTGGGGGACTCTA
CACCCAGTCCCCTGGCCGCTTGTAGCCAAATGTGAGGACCTCTCATGGGCGGCCAGAAAAAGGAGCTC
CAATTTACTGTGCCACCTGCTCTGAGGACCCCGGCAGCCTATGCTGTGAAAATCTGCAAAGCCCC
TGAGCCCAAAACAGTCTCCTACTGCAGCCGTCGGTGCCCGTGCACCTTAAACATCCAGCAGGACTGCGGC
CACTTCGTGCGCTCGGTGCCGTCCAGCATGCTCAGCTCCCCGACGCGCCCAAGGACCCTGTGCCTGCC
TGCCACACACCCCCCTGCCAGGAGCAGGACTGCGTGGTGGTATCACCCGAGAGGTGCCACATCAGAC
CGCCTCCGACTTCGTGCGGGACTCGCGGCCAGCCACCAGGCGGAGCCGAGGCGTACGAGCGGCGCGTG
TGCTTCTGCTTCTGCAACTCTGCAACGGGCTGGAGCACCTGAAGGAGCACGGGATCATCCACCGGACC
TGTGCCTGGAGAACCTGCTGCTGGTGCCTGCACCCTCCAGGCCGCCCCGGGCCGCCCGCCCCGGC
TCCCGCCCCGCGCCGCGCCTCCTGCTCCTCTGCCGCCCGCCTGCTGGTGGACTCTCAGCCCC
GCAGCCGCCCCGCTCCCCGGAAGGGCCCCGGGAGAAGCAGCTGCCCGGCTCATCATCAGCAACTTTT
TGAAGGCCAAGCAGAAGCCGGCGGCACCCAAACCTGCAGCAGAAGAAGAGCCAGGCCCGGCTGGCCCC
CGAGATCGTGTCTGCTTCCCAGTACCGCAAGTTCGATGAGTTCAGACAGGCATCCTCATCTACGAGCTG
CTGCACCAACCAACCCGTTTCGAGGTGCGCGCCAGCTGCGGGAGAGAGACTACCGGCAGGAGGACTGC
CGCCGCTGCCCGCTGTCCCTACTCACCCGGCCTGCAGCAGCTGGCACATCTGCTACTGGAGGCCGA
CCCCATCAAGCGTATCCGCATCGGCGAGGCCAAGCGCGTGTGCAAGTGCCTGTGTGGGGCCCTCGGCGC
GAGCTGGTGCAGCAGCCGGCACCTCGGAGGAGCGCTGTGCGGCACGCTGCACAAGTGGATCGACATGA
AGCGGGCCCTGATGATGATGAAGTTTGGGAGAAGGCGGTGGATCGCAGGCGGGCGTGGAGCTGGAGGA
CTGGCTTTGCTGCCAGTACCTGGCGTCTGCGGAGCCCGGGGCCCTTTACAGTCGCTGAAGCTCCTGCAG
CTTCTG

ACGCGTACGCGGCCGCTCGAGCAGAACTCATCTCTGAAGAGGATCTGGCAGCAAATGATATCCTGGATT
ACAAGGATGACGACGATAAGGTTTAA

Protein Sequence: >RC226391 representing NM_001080826
Red=Cloning site Green=Tags(s)

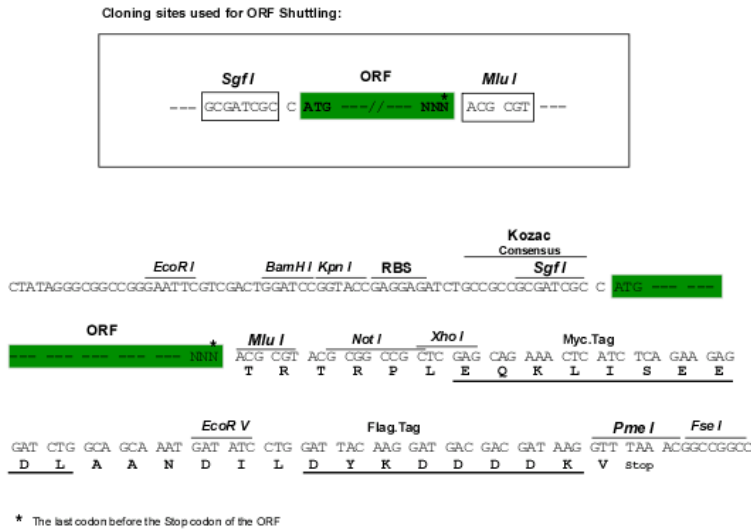
MHQTLCNPEESLKMSACSDFVEHIWKP GSCKNCFCLRSDHQLVAGPPQPRAGSLPPPRLPPRPENCRLE
DEGVNSSPYSKPTIAVKPTMMSSEASDVWTEANLSAEVSQVIWRRAPGKLLPKQEDAPVVYLG SFRGVQ
KPAGPSTSPDGN SRCPPAYTMVGLHNL EPRGERNIAFHVPVSFPEEKAVHKEKPSFPYQDRPSTQESFRQK
LAAFAGTTS GCHQGPGLRESLPSEDDSDQRCSPSGDSEGEYCSILDCCPGSPVAKAASQTAGSRGRHG
GRDCSPTCWEQ GKCSGPAEQEKRGPSF PKECSSQGP TAHP SCLGPKKLSLTSEAATSSDGLSCGSGSGSG
ASSPFVPHLES DYCSLMKEPAPEKQ QDPGCPGVTPSRCLGLTGEPQPPAHPREATQPEPIYAESTKRKKA
APVPSKSQAKIEHAAAAQGQVCTGNAWAQKAASGWRDSDPPTPQVSATITVMAAHP EEDHRTIYLS
PDSAVGVQWPRGPVSNSEVGE EETSAGQGLSSRESHAHSASESKPKERPAIPP KLSKSSPVGSPVSPSA
GGPPVSP LADLSDGSSGSSIGPQPPSQGPADPAPSCRTNGVAISDP SRCPQPAASSASEQRRPRFQAGT
WSRQCRIEEEEEEQELL S HSWGRET KNGPTDHSNSTTWHRLHPTDGSSGQNSKVG TGMKSASF AFEFP
KDRSGIETFSPPPPPKSRHLLKMNKSSDLEKVSQGS A ELSPSFRGVHVSFTTGSTDSL ASDSRTCS
GGPSEL AHSPTNSGKFLFAPVFPSPGSTEDVSPSGPQPPPLPQKKIVSRAASSPDGFFWTQGS PKPGT
ASPKNLSHSETNVHDESHFSYSLSPGNRHHPVFS SDDPLEKAFKGS GHWLPAAGLAGNRGGCGSPGLQC
KGAPSASSQLSVSSQASTGSTQLQLHGLLSNIS SKEGTYAKLGGLYTQSLARLVAKCEDLFMGGQKKE
HFNENNWSLFKLCNKPCCDSGDAIYYCATCEDPGSTYAVKICKAPEPKTVSYCS SVPVHFNIQQDCG
HFVASVPSSMLSPDAPKDPVLPALTPHPAQEQDCV VVI TREVPHQ TASDFVRD SAASHQAEPEAYERRV
CFLLLQLCNGL EHLKEHGI IHRDLCL ENLLL VHC TLQAGPGPAPAPAPAAA PCCSSAAPPAGGTLSP
AAGPASPEGPREQLPRL IISNFLKAKQKPGGTPNLQQKKSQARLAPEI VSASQYRKFDEFQTGIL IYEL
LHQPNPFEVRAQLRERDYRQEDLPPLPALSLYSPGLQLAHL LLEADPIKRIRIGEAKRVLQCLLWGPRR
ELVQQPGTSEEALCGTLHNWIDMKRALMMMKFAEKAVDRRRRGVELEDWLCQYLSAEPGALLQSLKLLQ
LL

TRTRPLEQKLISEEDLAANDILDYKDDDDKV

Chromatograms: https://cdn.origene.com/chromatograms/mk8005_f01.zip

Restriction Sites: SgfI-MluI

Cloning Scheme:

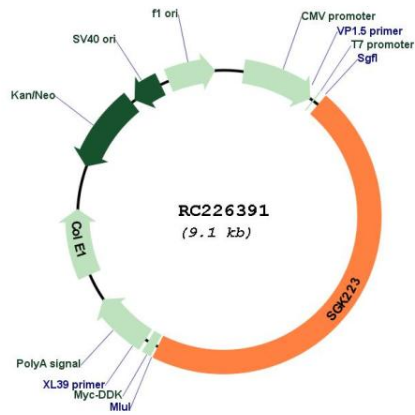


ACCN: NM_001080826

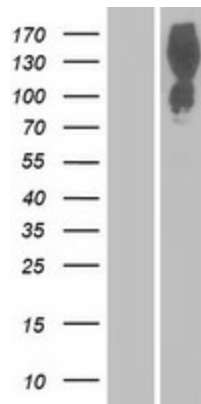
ORF Size: 4206 bp

OTI Disclaimer:	The molecular sequence of this clone aligns with the gene accession number as a point of reference only. However, individual transcript sequences of the same gene can differ through naturally occurring variations (e.g. polymorphisms), each with its own valid existence. This clone is substantially in agreement with the reference, but a complete review of all prevailing variants is recommended prior to use. More info
OTI Annotation:	This clone was engineered to express the complete ORF with an expression tag. Expression varies depending on the nature of the gene.
Components:	The ORF clone is ion-exchange column purified and shipped in a 2D barcoded Matrix tube containing 10ug of transfection-ready, dried plasmid DNA (reconstitute with 100 ul of water).
Reconstitution Method:	<ol style="list-style-type: none">1. Centrifuge at 5,000xg for 5min.2. Carefully open the tube and add 100ul of sterile water to dissolve the DNA.3. Close the tube and incubate for 10 minutes at room temperature.4. Briefly vortex the tube and then do a quick spin (less than 5000xg) to concentrate the liquid at the bottom.5. Store the suspended plasmid at -20°C. The DNA is stable for at least one year from date of shipping when stored at -20°C.
RefSeq:	NM_001080826.1 , NP_001074295.1
RefSeq ORF:	4221 bp
Locus ID:	157285
UniProt ID:	Q86YV5
Cytogenetics:	8p23.1
Protein Families:	Protein Kinase
MW:	149.1 kDa
Gene Summary:	This gene encodes an enzyme that belongs to the tyrosine protein kinase family. A similar protein in rat binds to Rho family GTPase 2 (Rnd2) and regulates neurite outgrowth via activation of Ras homolog gene family, member A (RhoA). [provided by RefSeq, Mar 2014]

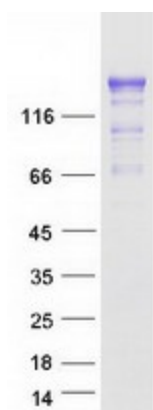
Product images:



Circular map for RC226391



Western blot validation of overexpression lysate (Cat# [LY425920]) using anti-DDK antibody (Cat# [TA50011-100]). Left: Cell lysates from untransfected HEK293T cells; Right: Cell lysates from HEK293T cells transfected with RC226391 using transfection reagent MegaTran 2.0 (Cat# [TT210002]).



Coomassie blue staining of purified PRAG1 protein (Cat# [TP326391]). The protein was produced from HEK293T cells transfected with PRAG1 cDNA clone (Cat# RC226391) using MegaTran 2.0 (Cat# [TT210002]).