

## Product datasheet for **RC226388**

### RTL1 (NM\_001134888) Human Tagged ORF Clone

#### Product data:

Product Type:	Expression Plasmids
Product Name:	RTL1 (NM_001134888) Human Tagged ORF Clone
Tag:	Myc-DDK
Symbol:	RTL1
Synonyms:	HUR1; Mar1; MART1; PEG11; SIRH2
Mammalian Cell Selection:	Neomycin
Vector:	pCMV6-Entry (PS100001)
E. coli Selection:	Kanamycin (25 ug/mL)
ORF Nucleotide Sequence:	>RC226388 representing NM_001134888 Red=Cloning site Blue=ORF Green=Tags(s)

CTATAGGGCGCCCGGAATTCGTCGACTGGATCCGGTACCGAGGAGATCTGCCGCCGCGATCGCCGGCCGCCC

ATGATAGAACCCTCTGAAGACTCATTTGAGACGATGATGGAGCATAAGAATCCATCATCAAACAAATGG  
AGTCTCCGAGGGCTCATCCAACACCACCAGGGCGACGTCGGGCAGTGGAGTGCAGGGAGAGGCAGGGCC  
AGCCAGCGGCCAGCCCAGGAAAAGAAGGAGCCCCCAGTGGCCCACTCCAGGAAATGGAAGAGCTGCC  
ACTGATCTACTCAAGACATGGAGGAGCCATCCAGTGGCCACGTAAGGAAATAGAGGATCCACCAATG  
ACCTACTCAAGACCTGGAGGAGTCATGCAACGGTTCACACCAGGCAAGGGGGATCCACTCAGTGGAGC  
ATCTGATAGGATGAAAGAAGCATCAGTCAACCCATCGGGAGCCGAGAAGAAAGAGGGCTCACACTGAC  
CTGAAGGAATCGGGAAGGGAGGAGACTCCTCAAGAGCAAAACCAGACCGAGCACTCAACCCGAGAACTTA  
TGGCCATGGTGGTCCATCATCTCGTGTACTTCCGAATGCAAGACCTCAAAGAGCAACAGAGAGTAGC  
AGAAGAGATCTTGATCAAAGGGATCAATGCAGGCCAACTGCCCGCCCAAGCACTTCTCTGGCGATCGC  
AGAGAATCCACGAGTTCATCGTACTCTGCCAACTGACCTTACAGAGCTACCCAAGAATGTTCTATAACG  
ACCGTCTGAGAGTTGGCTATGTCATCAATCACCTGTCCGGCTTGGCATTAGAATGGGCCAAAGCTCTACT  
GCAGGAAAACAGCCCCCTGATCGGAGACTTCCCAGCCTTCTGGAGGCCATGTCCGAAGTGTGTTGAGTAC  
CGCCAGGCACTGGTGTGGCAGAAGAGGCCATGTTACCATCAGGCAGGGCGGCCGCTCTGCCACTGAT  
ACATCGATGAGTTCAGAGCCTGGTACCCATCTTGGGCTGGCCAGATGAAGTCTGCAGGCCCACTGTG  
CCAGGGGCTCAACGAGGAGATCAGGCACTATCTATTCCGGGTCCCTCAGCCGGATTCCCTAGACAGTCTG  
ATTGTGCTCATCTGCAATAGAAGAGAAGCTGGCAGAGAGAAGAGCTATGCTCAGGCTGCCCCCGAGG  
CCCGCCCCGGAACCTGACCTGGATCGACTCACCTGCTCCAGAGAGGTGGATGGTCAGCAGCTGGTTGCC  
CAGCGAAGTCCATCCGGACATCAATCGCGCCACCTTCTCTGCTGCTCATGGTGAAGTGAACCCCTAC  
CACAGCGTCGCGGTCCAGGCCCTGGTGGATTCCGGAGCTGACGGCAACTCATGGATGAGAAGTTCGCC  
AAGAGCACTACGTCGAGCTCTACGAGAAGCCGTACCCACAGCCGGTCCAATCCGTGGACGGCTCGTGT  
TGCAACGAGCCTGTCTGGCTCTACACGGAGCCCTGGTGTGTATCCACCAGAACCACAGGAGTCCATC



[View online >](#)

GAATTTGACATCGTACCTTCACCGAACTTCTCTGTGGTCTAGGCATCCGCTGGCTCCGAGTCCACGCC  
CCGAAGTCGACTGGATCAAAGGCCGCTGCACCTTCCACTCTCCCTACTGCCTGAAGAAGTCTTCCGCC  
GCCCCGCCATGCATTGCCCTAGAGAGGCACGGCATGAGCCTGCTACCCGGACTGCCACACCCATACTCA  
GACCTGGCCGACGTGTTAAACCGAAGGAAGCAGATGATGAGACTTCCGACCAGCCAAGCTCAGACGGAT  
CCGATGATCTTTCTGAATCAGAGCCCTTGAGCTTACGAGGCTGGAGACAGTATCACAGCGAGACCTT  
TTACGAGTGTCCCTCCACCGCCCTTGGAACTGTGGTGCCAGGATGCAAGAAAGACCCAGGCTACAG  
GAGGAATACTGGGACCTGCAGGACATGCTGACCAACAGACAGGACTACATACAGATGATTCCGGAAGCT  
TTGACCAGTTACACGGAGCCGAGTGGTTCAAAAACGGAGCTGCGTGGGACCATTGTGGAGGAAAGCGT  
GAACGGGCACCGCACCGAAGATGTGTGGAAAGCAGCGTTTGGTTTGGAGCTTGAAGAGATGAAGAGCTAC  
CAGCCGTTTGGCTCTCCCCAGACCCTATCATACCTCAGAACGTGATTCACTTCTCCTAAAGGACATGC  
TAGGGTCTTTGTCTTCTTATGGCCAGGAAGTCTGATCTACTCAATGAGTCAGGAGGAGCACCTCCA  
CCACGTCCGCCAAGTCTGGTCCGCTTCCGCCATCACACGTCTACTGCTCCCTGGACAAGGCCAGTTC  
CACCGCAAACCGTGAATTCTGGGCTTCGTCGTCACCCCAAGGGGTGAACTGAACAAGAAGTCA  
TGACCATATAACAGGTACCTACCCCTGGCTCCAAGCTATCTCTGCGAACTTCAATCGAATTCGTTCT  
CCCCTACCGCCACTTCGTGGAGCGTTCAGCATCATCGCAGAGCCCTGGTGGCGCAGCTGCTGAGCTCC  
TACCAGTTCTACTGGGGAGTCGAGGAGCAAGAGGCCTTCGAGTGCCTGAAGAGGGCTTCCGCAAGGCGC  
CTCTCCTCCACCACCCCAAGCCCAAGAACCATTCTACTTGGAAACCGGCGTCACCGGCACGGCCCTGCA  
CGCCTCCCTGATCCAAATCGACGACAAACCGGCAAGAGAGCCTGCTGCGCTTCTACTCCCGCAACATC  
TCCCCTATCGAGGTTGAGTACTTCAAGCGGAGATGAAGATTCTTCCAATACGGGCTGCCTTCATGGTGT  
GGTGCCGCTACCTGGAGAACACCGAGGAGCCCATCATGATCCTTCTCAACACAGAGGATCTAGCCTCTCT  
GAATAATGACAGGCTCACCGTACTTCTCCCCGGCATTGGGTCTTCTTCTTCTCCCACTTCACTTTGAC  
GTCATGGAGCTGCCAGAACAGACGGCGGCCGAGCTCTGCCACCTGTGAGAAACCTCCGGTGGAGGAGAG  
CCTTCCAGAGGAACACTGCCGCCAGGCAAAACCTGCTGCTGGCCTCAAGGGGATTCCCGAGGATCCATC  
GACGGAATCCGGGAAGAAGAGAATGAAGAACAGGATGAGCTCAATGAACAGATCCTACGGCAAGAGCTG  
CTGGCCATGATACCCATCGACCAGATCCTCAACAGCTTCTCTGCCCACTTCAAGATGGCCAGATCAGGG  
CCGTACTTCTGCCTTCTCCGAGGCTCCTGTACTGGAAGAACACCCTAGCCCTGGCAGCCATCCTCGT  
GCTACTGCGCGTGAGGCAATGCCTCTCGCTGCGGCCGGCACCCGCCATGCGGGTGGCTCGGCCCCAGCCC  
CAGCGCTCCCTACGACTCATCCTGGATTCTGCTCCCTCATCGCAGGCAGCAGCATCACGACAGCCATCACCC  
AGCTGCTACCCAGATGCCCGCTCTCGTAGGTGCAAACACCATCCAGCCAGGAGCTGGCTGAGCTGTT  
CCTGGGCCCTGGCCGCTGGCAGCGAAATGCTCTGCACTCCAGGCCACCGAGGCTGCAGTTCACCCCT  
GGCTTCTGGCTGACGCTGTGTGAGTTCTTCGGTGTGAGTACACCCCAAGGAGGCCACCTCCCTGCC  
TGCCTCAGAACCCTACCTGGAGCTGCAGCTCGTTGGTGTGAGGATGTGCTTTCGAGAAAGCCCTGCA  
AGACGACCTGCAACGTTACCGTCAAGTGTGGCTGCATGACGGCCTGCAAGACACCTCGCAGGACAAGCAG  
GACAACGACGTGCAGGAGGCCCCACCCAGCCACACAGCAGCCACCCACCCACCCCGCCACGCCACCTGA  
TGGATCCCGAGTCTGGAAATCCTTGGTAGCCGCTGCTCCACATCCACAGTGCAGATGGCCAGCTGCA  
CCTGCTCAGCCGGGAGCAGGCAGCCAGGCCCTGAGCCAGTTCCTGACCCTGATCTACAGGCGGGCCCTG  
CCCATCCCGCCTGGGAGAGCCAGCCAGGAGCAGGCAAGGCTAGAAGAGCTGCCTGATGAGGACGAAG  
ATGCTAACCTCGAC

ACGCGTACGCGGCCGCTCGAGCAGAACTCATCTCAGAAGAGGATCTGGCAGCAAATGATATCCTGGATT  
ACAAGGATGACGACGATAAGGTTTAA

**Protein Sequence:** >RC226388 representing NM\_001134888  
Red=Cloning site Green=Tags(s)

```

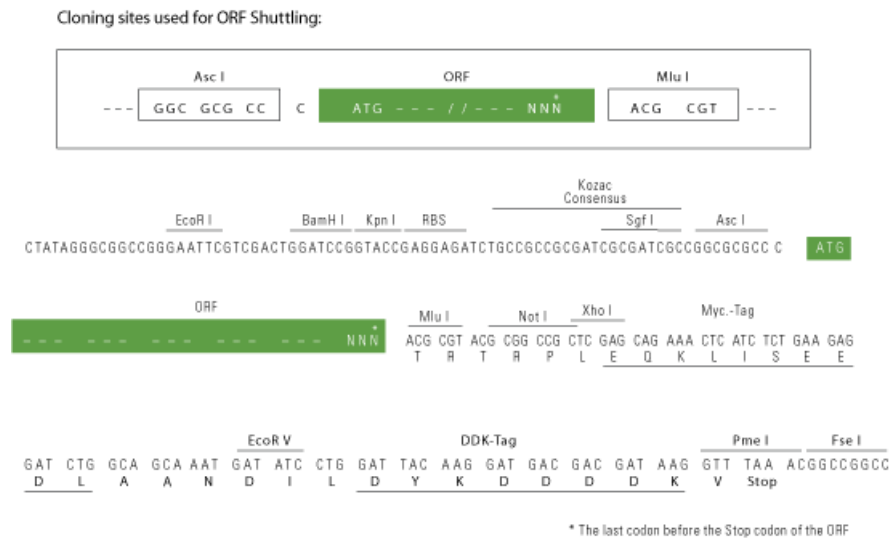
MIEPSEDSFETMMEHKNPSSKQMESSESGSSNTTEATSGSGVRGEAGPASGPAQEKKPEPPSGPLQEMEELP
TDLLQDMEEPSSGPRKEIEDPPNDLLQDLEESCNGSHQARGDPLSGASDRMKEASVNPSSGAREEQEAHTD
LKESGREETPQEQNQTEHSTAELMAMVRSIISLYFRMQDLKEQQRVAEEILIKGINAGQLPAPKHFSGDR
REFHEFIVLCQLTLQSYPRMFYNDRLRVGYVINHL SGLALEWAKALLQENSPLIGDFPAFLSEAMSEVFEY
RQALRVAEEAMFTIRQGGRSATEYIDEFQSLVPI LGWPDEVLQAHL CQGLNEEIRHYLFRVPQPSLDSL
IVLILQIEEKLAEERRAMLRLPPEARPNLTWIDSPAPERWMVSSWLPSEVHPDINRAHLFLLLMVRVNPY
HSVAVQALVDSGADGNFMDEKFAQEHYVELYEKYPYPQVQSDGSLIGNEPVWLYTEPLVCIHQNHQESI
EFDIVPSPNFSVVLGIRLVRVHAPEVDWIKGRCTFHSPYCLKNCFRPPPCIALERHGMSLLPGLPHYS
DLADVFNPKAEDETSQDPSSDGSDDLSESESELQQAGSDHSETFYECPTAPWEPVGARMQERARLQ
EEYWDLQDMLTNRQDYIQMIPELFDQLHGAEF TKLELRGTIVEESVNGHRTEDVWKAAGLELEEMKSY
QP FALSPDPIIPQNVIHFLKDMLGFFVL SYGQEVLIYSMSQEEHLHVRQVLRFRHHNVYCSLDKSQF
HRQTVEFLGFVTPKGVKLNKNVMTIITGYTPGSKLSLRNFIEFVFPYRHFVERFSIIAEPLVRQLLSS
YQFYWGVEEQEA FECLKRAF RKAPLLHHPKQNP FYLETGVTGTALHASLIQIDDQTGKRACCAFYSRNI
SPIEVEYSQAEMKILPIRAAFMVWCRYLENT EEPIMILLNTEDLASLNNDRLTVLLPGHWVFFF SHFNFD
VMELPEQDGGRALPPVRNLRWRRAFQRNTAARQTL LLLASRGFPRDPSTESGEEENEEQDELNEQILRQEL
LAMIPIDQILNSFLAHFSMAQIRAVILHFFRGLLYWKNTLALAA ILVLLRVRQCLSLRPAPAMRVARPQP
QRSLRLILDSSL IAGSSITTAITQLLTQMPALVGANTIPAQELAEFLGPGRWQRNALHSQAHRGLQFTF
GFWLTLCFEFFGVRVTPQEGHLPALRQNRYLELHVVGDEDVVLREALQDDLQRYRQCGLHDGLQDTSQDKQ
DNDVQEAPP SHTAATHPPRPRHLM DPQVLEFLGSRL LHIHSADGQLHLLSREQAARALSQFLTLIYRRAL
PIPAWESQPREQARLEELPDEDEDANLD
    
```

TRTRPLEQKLI SEEDLAANDILDYKDDDDKV

**Chromatograms:** [https://cdn.origene.com/chromatograms/mk8031\\_f02.zip](https://cdn.origene.com/chromatograms/mk8031_f02.zip)

**Restriction Sites:** AscI-MluI

**Cloning Scheme:**

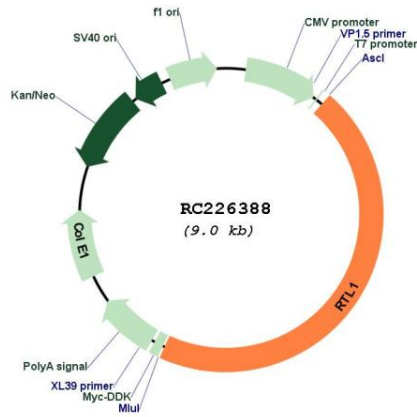


**ACCN:** NM\_001134888

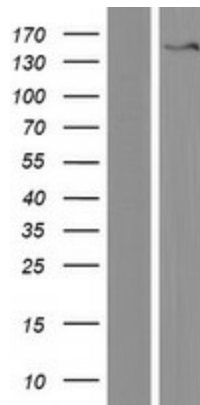
**ORF Size:** 4074 bp

<b>OTI Disclaimer:</b>	The molecular sequence of this clone aligns with the gene accession number as a point of reference only. However, individual transcript sequences of the same gene can differ through naturally occurring variations (e.g. polymorphisms), each with its own valid existence. This clone is substantially in agreement with the reference, but a complete review of all prevailing variants is recommended prior to use. <a href="#">More info</a>
<b>OTI Annotation:</b>	This clone was engineered to express the complete ORF with an expression tag. Expression varies depending on the nature of the gene.
<b>Components:</b>	The ORF clone is ion-exchange column purified and shipped in a 2D barcoded Matrix tube containing 10ug of transfection-ready, dried plasmid DNA (reconstitute with 100 ul of water).
<b>Reconstitution Method:</b>	<ol style="list-style-type: none"><li>1. Centrifuge at 5,000xg for 5min.</li><li>2. Carefully open the tube and add 100ul of sterile water to dissolve the DNA.</li><li>3. Close the tube and incubate for 10 minutes at room temperature.</li><li>4. Briefly vortex the tube and then do a quick spin (less than 5000xg) to concentrate the liquid at the bottom.</li><li>5. Store the suspended plasmid at -20°C. The DNA is stable for at least one year from date of shipping when stored at -20°C.</li></ol>
<b>RefSeq:</b>	<a href="#">NM_001134888.3</a>
<b>RefSeq ORF:</b>	4077 bp
<b>Locus ID:</b>	388015
<b>UniProt ID:</b>	<a href="#">A6NKG5</a>
<b>Cytogenetics:</b>	14q32.2
<b>MW:</b>	154.9 kDa
<b>Gene Summary:</b>	This gene is a retrotransposon-derived, paternally expressed imprinted gene that is highly expressed at the late fetal stage in both the fetus and placenta. It has an overlapping maternally expressed antisense transcript, which contains several microRNAs targeting the transcripts of this gene through an RNA interference (RNAi) mechanism. This gene is essential for maintenance of the fetal capillaries. [provided by RefSeq, Jul 2009]

Product images:



Circular map for RC226388



Western blot validation of overexpression lysate (Cat# [LY427511]) using anti-DDK antibody (Cat# [TA50011-100]). Left: Cell lysates from untransfected HEK293T cells; Right: Cell lysates from HEK293T cells transfected with RC226388 using transfection reagent MegaTran 2.0 (Cat# [TT210002]).