

Product datasheet for RC226376

Lubricin (PRG4) (NM_001127710) Human Tagged ORF Clone

Product data:

Product Type:	Expression Plasmids
Product Name:	Lubricin (PRG4) (NM_001127710) Human Tagged ORF Clone
Tag:	Myc-DDK
Symbol:	PRG4
Synonyms:	CACP; HAPO; JCAP; MSF; SZP
Mammalian Cell Selection:	Neomycin
Vector:	pCMV6-Entry (PS100001)
E. coli Selection:	Kanamycin (25 ug/mL)
ORF Nucleotide Sequence:	>RC226376 representing NM_001127710. Blue=ORF Red=Cloning site Green=Tag(s)

```
GCTCGTTTGTAGTAACCGTCAGAATTTTGTAAATACGACTACTATAGGGCGCCGGGAATTCGTCGACTG
GATCCGGTACCGAGGAGATCTGCCGCCGCGATCGCC
ATGGCTTGAAGACCTGCCAATTTATCTGCTCCTTCTGCTGAGCGTCTTTGTGATACAGCAGGTGAGT
AGTCAGGAGCTCTCATGCAAGGGCAGGTGTTTCGAGTCTTTTCGAGCGCGGACGGGAGTGCGATTGCGAC
GCTCAGTGCAAAAAGTATGACAAGTGCTGCCCTGACTACGAAAGCTTTTTCGCGGGAGGTGAAGGATAAC
AAAAAAAACAGAACAAAAAGAAACCCACCCCTAAACCACCGGTTGTGGATGAGGCCGGCTCTGGGCTG
GACAATGGAGACTTTAAAGTCACTCCAGACACGTCAACCACACAACAACAAGTAAGCACCTCA
CCAAAGATAACCACAGCCAAGCCATTAATCCACGGCCATCCTTGCTCCTAACAGCGACACATCAAAA
GAAACTTCTTTGACCGTGAACAAGGAAACCACGGTCGAGACCAAGGAAACTACAACCACTAATAAGCAG
ACCTCCACCGACGGGAAGGAGAAGACCCTTACGCTAAAGAGACACAGTCCATAGAGAAAATTTCTGCA
AAAGATCTGGCACCAACGTCTAAGGTGCTCGCTAAACCGACTCCGAAAGCAGAAACCACCACAAAGGGT
CCCGCTCTCACTACTCCAAGGAGCCAACCTACCACACCCAAAGAACCAGCTTCAACCACACCTAAG
GAGCCACGCCCACCACAATTAAGTCCGCCCGACTACACCAAGGAGCCTGCCCGACCAACAAAA
TCTGCCCTACTACCCGAAGGAGCCCGCTCCAACAACCACTAAGGAGCCCGACCGACTACCCCTAAG
GAACCCGCCCTACGACGACAAAGGAACCAAGCTCAACCAAGCAAGAGCGCTCCCAACCCCTAAG
GAGCCTGCCCCACAACCTCTAAGAAGCCGGCTCCTACAACCCGAAGGAACCAAGCCCAACCAAGCCCA
AAAGAACCACTCCAACAACCCCTAAAGAGCCAGCACCTACAACCTAAAGAGCCTGCTCCGACAACCCCT
AAGGAGCCTGCTCCTACAGCCCCAAAAAACCAGCGCCACCACGCCCAAGGAGCCCGCTCCTACAACC
CCCAAAGAACCAGCCCCAACCACTACTAAGGAACCGTCAACCACTACCCAAAAGAACCAGCCACT
ACCACAAAATCAGCCCCACTACCACAAAAGAGCCAGCGCCAACCACTACCAAAAGTGCGCTACTACA
CCGAAAGAGCCTAGCCCAACCACTACAAAAGAACCAGCGCCCAACCTCCCAAAGAACCAGCTCCGACC
ACCCCTAAGAAACCAGCACCTACTACACCAAGGAACCCGCCCTACCACACCAAAAGAGCCAGCCCC
ACCACAACGAAAAACCCGCGCTACCACACCCAAAGAACCAGCCCACTACTCCAAAGGAGACCGCT
CCTACCAGCCAAAGAACTGACCCCACTACGCGGAGAACTGGCACCAACCACCCAGAGAAACCC
```



[View online >](#)

GCCCCACTACTCCCAGGAACTCGCTCCGACGACACCCGAAGAACCACGCCTACAACGCCTGAGGAG
CCTGCCCTACAACCCAAAAGCCGAGCGCAAAATACCCCAAGGAACCTGCGCCGACTACTCCTAAG
GAGCCCGACCCACAACACCAAGGAGCCAGCGCCGACAACCTCTAAAGAGACCGCTCCTAAGGAA
AAAGGGACTGCACCTACGACATTGAAAGAACCTGCGCCTACGACCCCTAAGAAACCTGCTCCCAAGGAA
CTCGCTCCCCTACCACAAAAGACCAACGTCCACCACATGCGATAAACCAGCCCCGACCACTCCCAAG
GGTACGGCTCAAACCACACCAAGGAACCTGCCCAACTACACCGAAGGAGCCCGCCCAACGACCCCA
AAGGGACTGCTCCTACTACGTTGAAAGAACCAGCCCCACAACACCAAAAAAACCCGCCCAAGGAG
CTCGCCCCTACAACCTACAAGGGCCCTACTAGTACCACCAGTGACAAACCCGACCAACAACCCCGAAA
GAGACTGCCCTACCACACCTAAGGAGCCGCGCCTACCACCCCAAAAAACCTGCCCGACAACCCCT
GAAACCCCTCCCAACAACAAGCGAGGTGTCAACCCCAAGGACTACCAAGGAGCCCACTACCATTAC
AAATCTCTGTGAGAGCACCCAGAGTTGAGTGCAGGAGCCCACTCCGAAAGCTCTGAAAAATAGTCCA
AAAGAGCCAGGTGTCCCACTACAAGACTCCTGCTGCTACCAAGCCGAAATGACAACCTACCGCAAG
GATAAAACCACCGAGCGAGATCTGCGGACAACACCCGAGACTACTACAGCCGACCAAAAAATGACGAAA
GAAACAGCCACAACCACGAAAAAACACAGAGTCCAAGATAACCGCCACCACCAGCAAGTGACATCT
ACCACAACACAGGATACTACGCCCTTCAAATCACCACACTTAAAACAACCTACACTGGCACCAAGGTG
ACAACCACTAAGAAGACAATAACAACGACTGAGATAATGAATAAGCCGAAAGAGACAGCGAAACCAAG
GACAGAGTACCAATTCCAAGCCACCACCCCAAGCCACAAAAACCAAAAGGACCCAAAAAGCCT
ACCAGTACAAAAAACCAAGACCATGCCTAGAGTACGGAAGCCCAAGACAACCCACACCCGCGCAAA
ATGACGAGCACTATGCCAGAACTTAATCCACATCCCAGTGCAGAAAGCTATGTTGACAGCCACTACC
CGCCCAATCAGACACCGAACAGTAAACTCGTCAAGTCAACCCCAATCAGAGGATGCCGGAGGCGCC
GAAGGGGAGACTCCACATATGCTCCTGCGACCGCATGTTTTATGCTGAAGTGACCCCTGACATGGAT
TACCTTCTAGGGTCCCTAATCAGGGTATCATCATCAATCCTATGCTCAGTGATGAGACCAATATTTGT
AACGGAAACCAAGTGGATGGACTGACAACACTGCGCAACGGCACACTGGTTGCTTTTCGGGTATTAT
TTTTGGATGCTGTCCCATTCTACCACCATCCCAGCTCGAAGGATCACAGAGGTGTGGGCATTCTCT
TCTCAATTGACACCGTTTTACCCGCTGCAATTGCGAAGGAAAAACCTTCTTTTTCAAAGACAGTCAG
TATTGGGATTTACAATGATATCAAAGACGCAGGGTATCCCAAGCCGATCTTCAAAGGCTTCGGAGGC
CTGACAGGCCAGATTGTTGCCGCTCTCCACCCTAAGTACAAGAACTGGCCTGAATCCGTGTATTTT
TTAAGAGAGGGGAAGCATTCAACAATATATCTATAAGCAGGAGCCGTGCAGAAATGCCAGGCAGA
CGGCCCGCTCTGAACCTACCCAGTTTACGGCGAGACTACCCAGGTAAAGGAGGAGCGCTTCGAGAGAGCT
ATTGGGCCCTCCAAACCCACACAATACGGATACAGTACTCTCCGCAAGACTGGCATAACAGGACAAG
GGAGTGTCCACAACGAGGTAAGGTTAGCATATTGTGGCGGGCTTGCCAAACGTTGTAACATCTGCC
ATAAGCCTGCCCAACATTGCAAGCCTGACGGATACGACTACTATGCATTTAGCAAAGATCAGTATTAC
AATATAGACGTGCCTTCCAGAAGTCCCGCGCAATTACCACCAGGTCCGGCCAGACACTCTCAAGGTG
TGGTATAATTGCCCT
ACGCGTACGCGGCCGCTCGAGCAGAACTCATCTCAGAAGAGGATCTGGCAGCAATGATATCCTGGAT
TACAAGGATGACGACGATAAGGTTTAAACGGCCGGC

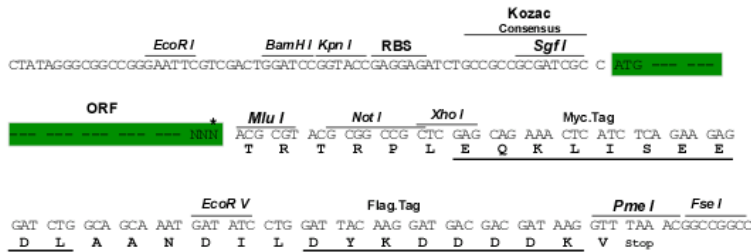
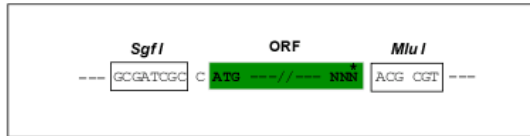
Protein Sequence: >Peptide sequence encoded by RC226376
 Blue=ORF Red=Cloning site Green=Tag(s)

MAWKTLPIYLLLLLVFVIQQVSSQELSCKGRCFESFERGRECDCAQCKKYDKCCPDYESFCAEVKDN
 KKNRTKKKPTPKPPVDEAGSLDNGDFKVTTPDTSTTQHNVSTSPKITTAKPINRPSLPPNSDTSK
 ETSLTVNKETTVEKETTNTKQSTSDGKEKTTSAKETQSIEKTSAKDLAPT SKVLAKPTPKAETTTKG
 PALTTPKPTTPKEPASTTPKEPTTTIKSAPTTTPKEPAPTTKSAPTTTPKEPAPTTTKEPAPTT
 EPAPTTTKEPAPTTTKSAPTTTPKEPAPTTPKKPAPTTTPKEPAPTTTPKEPTPTTPKEPAPTT
 KEPAAPTAPKKPAPTTTPKEPAPTTTPKEPAPTTTTPKEPAPTTTTPKEPAPTTTTPKEPAPTT
 PKEPSPTTTPKEPAPTTTPKEPAPTTPKKPAPTTTPKEPAPTTTPKEPAPTTTTPKEPAPTT
 PTTPKLTPPTPEKLAPTTPKEPAPTTPEELAPTTPPEPTPTTPPEPAPTTPKAAAPNTPKAPTT
 EPAPTTTPKEPAPTTPKETAPTTPKGTAPTTLKEPAPTTPKKPAPKELAPTTTKEPTSTTCDKPA
 GTAPTTTPKEPAPTTTPKEPAPTTPKGTAPTTLKEPAPTTPKKPAPKELAPTTTKEPTSTTSDK
 ETAPTTTPKEPAPTTPKKPAPTTPETPPPTTSEVSTPTTTTKEPTT IHKSPDESTPELSAEP
 TPKALENSPKEPGVPTTKTPAATKPEMTTAKDKTTERDLRTPETTTAAPKMTKETATTTTEKTT
 SKITATTTQVTS TTTQDTPFKITTLKTTTLAPKVTTTTKITTTTEIMNKPEETAKPKDRATNS
 KATTPKPQKPTKAPKKPTSTKKPKTMRVRKPKTTPTRKMTSTMPELNPTSRIA EAMLQTTTRPN
 QTPNSKLV EVPNKSEDAGGAEGETPHMLLRPHVFMPEVTPDMDYLPRVFNQGIINPMLSDETNI
 CNGKPV DGLTTLRNGTLVAFRGHYFWMLSPFSPSPARRITEVWGIPSPIDTVFTRCNCEGKTF
 FFKDSQYWRFTNDIKDAGYKPIFKGFGGLTGQIVAALSTAKYKNWPEVYFFKRGGSIQQYI
 YKQEPVQKCPGRRPALNYPVYGETTVRRRRFERAIGPSQHTIRIQSPARLAYQDKGVLHNE
 VKVSI LWRGLPNVVTSAISLPNIRKPDGYDYAFSKDQYYNIDVPSRTARAITTRSGQTL
 SKVWYNCPTRTRPLEQKLI SEEDLAANDILDYKDDDDKV

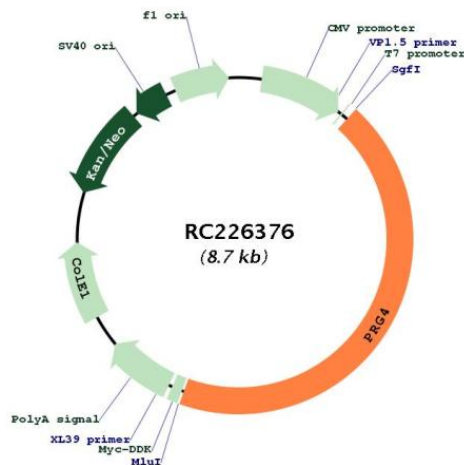
Restriction Sites:
Cloning Scheme:

Sgfl-MluI

Cloning sites used for ORF Shuttling:



* The last codon before the Stop codon of the ORF

Plasmid Map:


ACCN: NM_001127710

ORF Size: 3810 bp

OTI Disclaimer: The molecular sequence of this clone aligns with the gene accession number as a point of reference only. However, individual transcript sequences of the same gene can differ through naturally occurring variations (e.g. polymorphisms), each with its own valid existence. This clone is substantially in agreement with the reference, but a complete review of all prevailing variants is recommended prior to use. [More info](#)

OTI Annotation: This clone was engineered to express the complete ORF with an expression tag. Expression varies depending on the nature of the gene.

Components: The ORF clone is ion-exchange column purified and shipped in a 2D barcoded Matrix tube containing 10ug of transfection-ready, dried plasmid DNA (reconstitute with 100 ul of water).

Reconstitution Method:

1. Centrifuge at 5,000xg for 5min.
2. Carefully open the tube and add 100ul of sterile water to dissolve the DNA.
3. Close the tube and incubate for 10 minutes at room temperature.
4. Briefly vortex the tube and then do a quick spin (less than 5000xg) to concentrate the liquid at the bottom.
5. Store the suspended plasmid at -20°C. The DNA is stable for at least one year from date of shipping when stored at -20°C.

RefSeq ORF: 3813 bp

Locus ID: 10216

UniProt ID: [Q92954](#)

Cytogenetics: 1q31.1

MW: 136.5 kDa

Gene Summary:

The protein encoded by this gene is a large proteoglycan that is synthesized by chondrocytes located at the surface of articular cartilage and by some synovial lining cells. This protein contains both chondroitin sulfate and keratan sulfate glycosaminoglycans. It functions as a boundary lubricant at the cartilage surface and contributes to the elastic absorption and energy dissipation of synovial fluid. Mutations in this gene result in camptodactyly-arthropathy-coxa vara-pericarditis syndrome. Alternative splicing results in multiple transcript variants. [provided by RefSeq, Dec 2014]