

Product datasheet for **RC226371**

PHLDB2 (NM_001134439) Human Tagged ORF Clone

Product data:

Product Type:	Expression Plasmids
Product Name:	PHLDB2 (NM_001134439) Human Tagged ORF Clone
Tag:	Myc-DDK
Symbol:	PHLDB2
Synonyms:	LL5b; LL5beta
Mammalian Cell Selection:	Neomycin
Vector:	pCMV6-Entry (PS100001)
E. coli Selection:	Kanamycin (25 ug/mL)
ORF Nucleotide Sequence:	>RC226371 representing NM_001134439 Red=Cloning site Blue=ORF Green=Tags(s)

TTTTGTAATACGACTCACTATAGGGCGGCCGGAATTCGTCGACTGGATCCGGTACCGAGGAGATCTGCC
GCC**CGATCGC**C

ATGGAAGAGCATAGCTACATACAAAAGGAGCTAGATTTACAAAATGGTAGCTTAGAGGAAGACTCTGTGG
TGCATTCTGTTGAGAACGATTCCCAAACATGATGGAGAGCCTCAGCCCAAAGAAATACTCTCCAGTCT
GAGATTTAAAGCCAATGGAGACTATTCTGGCTCCTATTTAACCTCTCACAACTGTGCCTGCAAAGAGA
AGCCCTTCTCCTTTGGGAACAGTGTGAGAAGCAGCCCTCCTTAGCCAAAATCCAGGGAAGCAAGCAGT
TCTCTTATGATGGAAGTACAAAATATTCCTATGAAACCTCCAACCTCTTACTCAACTACATCCTC
CCTCAGTGGATATCCACTTGAAGAGCAGACTTTGATCATTATACTGGCCGGGACAGTGAAAGGGCCTTG
AGGCTCTCAGAGAAGCCTCCCTATTCCAAATATAGCTCAAGGCATAAATCGCATGACAATGTCTACTCTC
TTGGAGGGCTGGAAGGTGGAAGGCATCTGGCTCGCTCCTGGCCATGTGGAATGGAAGTCCCTGAGTGA
TGCTGGCCCGCTCCTATCAGCAGATCGGGAGCCGCAAGCATGCCTTCAAGCCAAAGCAAGCCAGGAAA
ATGAGCATTGAGGACAGCCTGGCGCTTCAACCCAAAGTTAACTAGACACAAGGAGCTTGCATCTGAAAACA
TCAATTTGAGAACTAGGAAGTACTCCAGCAGCAGCCTGAGTCACATGGGAGCCTACAGCCGATCACTTCC
CAGGTTGTACAGAGCCACAGAGAACCAGCTGACACCTCTCAGCTTGCCCTCAAGAAACTCTCTGGGCAAT
TCCAAACGAACAAAACCTGGGGAAAAGGATCTACCTCATAGCGTAATAGACAATGACAATTACCTTAATT
TTTCTTTTGGAGCTCAGGGCTTTACCCTATAAACCTCTGCTTCTGAAGGCAATCCTTATGTAAGTTC
TACCCTCAGTGTCCCTGCCAGTCCACGAGTGGCTCGGAAGATGCTTCTGGCCTCCACCTCCTCTGTGCC
TCTGATGACTTTGATCAGGCTTCATATGTGGGACAAAACCCGAGTCATTCACTTCTTGTGGAGAGTCAG
ACAGAGTTTTTGCACCAGGAGGAACCTCTCTTGTGGATCTGTGGAATTTGATGAGGCAGATTTGGAAAG
CCTCAGACAGGCCTCAGGAACCCCCAGCCTGCCCTTGGGAACGAAAAGCAGTATTAGCTCCATTTCA
GGACGTGATGACCTGATGGATTACACCGCGGCAGAGGGAGGAAAGACTCAGGGAGCAGGAAATGGAGC
GATTGGAGAGACAGCGTCTGGAGACCATCCTCAGTCTCTGTGCTGAATACAAAAGCCTGACAGTCGCTT
ATCTACTGGGACCACCGTGAAGATGTGCAGAAAATCAACAAGGAGCTTGAGAAGCTGCAGCTCTCTGAT



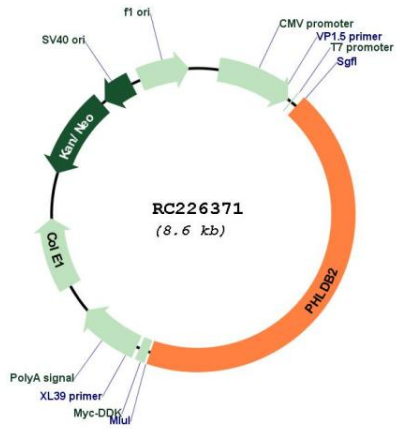
[View online >](#)

GAGGAGTCTGTGTTTGAGGAAGCCCTCATGAGCCCTGACACAAGATACAGGTGCCACCGAAAGACTCCC
TCCCTGATGCAGACTTGGCAAGCTGTGGGAGTCTCAGTCAGAGCAGTGCCAGCTTCTTTACCCCCAGGAG
CACCAGGAATGATGAACTACTCAGTGACCTCACCCGGACTCCTCCACCACCATCTCCACCTTTCCGAAA
GCTTCCAGCGAGTCTCTTATCTAAGTATCCTACCAAAGACCCAGAGGGTATAAGTGAAGAACAGAGAT
CTCAGGAGTTGGCTGCAATGGAAGAAACCCGGATAGTCATTCTGAACAACCTCGAGGAACCTAAGCAAAA
AATCAAAGACATAAATGATCAGATGGATGAGTCTTTCAGAGAGTTGGATATGGAATGTGCTCTTTGGAT
GGAGAACAGAAAATCTGAAACAACCTGAACCTTATGAAGGAGAAGGAGATTTTGGATCATCTAAACCGAAAA
TAGCTGAACTGGAAAAGAACATTGTTGGTGAAGACCAAGGAGAAGGTAAGCTTGATGCTGAAAAGGGA
AAAAGTACAGAGGCTTCAGGAGCTTTACTCCGAGCAGAAGACCCAGCTGGACAATTGTCCTGAGTCCATG
AGGGAACAGTTACAACAACAACCTGAAGAGGGATGCTGACCTGTTGGATGTTGAAAGCAAACACTTTGAAG
ACCTGGAGTTCCAGCAGCTTGAACATGAGAGCCGTCTAGATGAAGAAAAGGAGAAGTACTCAACAGCT
CCTGCGTGAAGTTGCTGAATATCAACGGAAACATCGTTTCTAGAAAAGAAAAAATTTCTGCATTGAAAAAG
CAAGCCAATCACATTGTTGAGCAGGCTCAGAGAGCAAGATCATTTTGTAAAGAAAAGAATAATTTAA
TAATGATGTTGCAAAGAGAAAAGGAGAATCTTTGTAATTTGAAAAGAAAATACTCCAGCCTCTCTGGGGG
GAAAGGGTTTCCGTTAACCCCAATACTTTAAAAGAGGGCTATATCAGTGTAAATGAGATTAATGAGCCG
TGTGGCAATCCAGCAATCTATCCCTTCCACTCAGTTTCTGCTGATGCTGATGCTGTTGCCACTGAGC
CTGCCACAGCTGTGCTGGCGAGCCAGCCACAGAGTAAAGAGCACTTTAGAAAGTCTGGAAGAAAGGAAAA
ACAGCATAAAGAAGGCCTCTATCTGAGTGATACTTTGCCTCGAAAAGAAAACCACATCTTCCATCTCCCA
CATTTGAGCAGTCTACTATGGGAGAGCATCACCCAAAGGCCATCTGCCCTTAGGACAGAGTAACA
GCTGTGGAAGTGTGCTCCCTCCCTCACTGGCAGCCATGGCCAAAGACTCAGAATCTCGGAGGATGCTCAG
AGGTTATAATCACCACAGATGAGTGAAGGACACAGGCAGAAATCTGAATTTTATAACCGCACAGCATCT
GAATCAAATGTCTACTTGAATAGTTTCCATTATCCAGATCACAGCTACAAGGACCAGGCCCTTTGATACTC
TGAGCCTCGATAGCTCTGATAGCATGGAGACCAGCATCTCTGCTTGCCTCACCAGACAACATCTTAGTGC
CAGCACTTCAAATATTGCTAGAATAGAAGAAATGGAGAGACTTTTGAAGCAGGCTCATGCAGAAAAGACG
CGGCTGCTCGAATCCAGGAAACGGGAAATGGAAGCCAAAAACGAGCCCTGGAAGAAAGAAAAACGAGCC
GGGAAATCCTGAAAAACGATTACAGGAAGAACTAGCCAGAGGCAGAAGTTAATAGAAAAGGAAGTAAA
AATAAGGGAGAGACAAAGGGCACAGGCTCGTCCTTTGACACGCTACCTGCCTGTCCGGAAGGAAAGACTTT
GATTTGCGGAGCCATGTAGAGACTGCTGGCCACAATTTGACACCTGTTACCATGTATCAATCACAGAGA
AGACCTGCCGAGGATTCCTCATCAAATGGGTGGGAAAATTTAAACGTGGAAAAAACGTTGGTTTGT
TGATCGGAACAAGCGAACATTCTTATTATGCAGACAAGCATGAACTAAATTGAAAGGAGTAATATAC
TTTCAAGCCATTGAAGAAGTCTATTATGATCACCTCAAGATGCTAATAAGAGTCTAATCCGTTACTCA
CCTTTAGCGTCAAGACTCATGACAGAATCTATTATGTTAGCCCATCGCCAGAAGCCATGCGGATCTG
GATGGATGTTATAGTTACGGGGCAGAAGTTACTACTCTTCTTGTG

ACGCGTACGCGGCCGCTCGAGCAGAACTCATCTCAGAAGAGGATCTGGCAGCAATGATATCCTGGATT
ACAAGGATGACGACGATAAGGTTTAA

OTI Disclaimer:	The molecular sequence of this clone aligns with the gene accession number as a point of reference only. However, individual transcript sequences of the same gene can differ through naturally occurring variations (e.g. polymorphisms), each with its own valid existence. This clone is substantially in agreement with the reference, but a complete review of all prevailing variants is recommended prior to use. More info
OTI Annotation:	This clone was engineered to express the complete ORF with an expression tag. Expression varies depending on the nature of the gene.
Components:	The ORF clone is ion-exchange column purified and shipped in a 2D barcoded Matrix tube containing 10ug of transfection-ready, dried plasmid DNA (reconstitute with 100 ul of water).
Reconstitution Method:	<ol style="list-style-type: none">1. Centrifuge at 5,000xg for 5min.2. Carefully open the tube and add 100ul of sterile water to dissolve the DNA.3. Close the tube and incubate for 10 minutes at room temperature.4. Briefly vortex the tube and then do a quick spin (less than 5000xg) to concentrate the liquid at the bottom.5. Store the suspended plasmid at -20°C. The DNA is stable for at least one year from date of shipping when stored at -20°C.
RefSeq:	NM_001134439.2
RefSeq Size:	5905 bp
RefSeq ORF:	3762 bp
Locus ID:	90102
UniProt ID:	Q86SQ0
Cytogenetics:	3q13.2
MW:	142.2 kDa
Gene Summary:	Seems to be involved in the assembly of the postsynaptic apparatus. May play a role in acetylcholine receptor (AChR) aggregation in the postsynaptic membrane (By similarity). [UniProtKB/Swiss-Prot Function]

Product images:



Circular map for RC226371