

Product datasheet for **RC226368**

DNA Polymerase gamma (POLG) (NM_001126131) Human Tagged ORF Clone

Product data:

Product Type:	Expression Plasmids
Product Name:	DNA Polymerase gamma (POLG) (NM_001126131) Human Tagged ORF Clone
Tag:	Myc-DDK
Symbol:	DNA Polymerase gamma
Synonyms:	MDP1; MIRAS; MTDPS4A; MTDPS4B; PEO; POLG1; POLGA; SANDO; SCAE
Mammalian Cell Selection:	Neomycin
Vector:	pCMV6-Entry (PS100001)
E. coli Selection:	Kanamycin (25 ug/mL)
ORF Nucleotide Sequence:	>RC226368 ORF sequence Red=Cloning site Blue=ORF Green=Tags(s)

TTTTGTAATACGACTCACTATAGGGCGGCCGGAATTCGTCGACTGGATCCGGTACCGAGGAGATCTGCC
GCC**CGATCGCC**

ATGAGCCGCTGCTCTGGAGGAAGGTGGCCGGCCACCCTCGGGCCAGGGCCGGTTCCAGCTCCGGGGC
GCTGGGTCTCCAGCTCCGTCGCCGCTCCGACCCAGCGACGGGCAGCGCGGGCCAGCAGCAGCAGCA
GCAGCAGCAGCAGCAACAGCAGCCTCAGCAGCCGCAAGTGTATCCTCGGAGGGCGGGCAGCTGCGG
CACAACCCATTGGACATCCAGATGCTCTCGAGAGGGCTGCACGAGCAAATCTTCGGGCAAGGAGGGGAGA
TGCTTGGCGAGGGCCGGTGCGCCGAGCGTGCAGCACCTGCAGAAGCACGGGCTCTGGGGCAGCCAGC
CGTGCCCTTGCCCGACGTGGAGCTGCGCCTGCCGCCCTCTACGGGGACAACCTGGACCAGCACTTCCGC
CTCCTGGCCCAGAAGCAGAGCCTGCCCTACCTGGAGGGCGCAACTTGCTGTTGCAGGCCAGCTGCCCC
CGAAGCCCCCGGCTTGGGCTGGGCGGAGGGCTGGACCCGGTACGGCCCCGAGGGGGAGGCCGTACCCGT
GGCCATCCCCGAGGAGCGGGCCCTGGTGTTCGACGTGGAGGTCTGCTTGGCAGAGGGAATTGCCCCACA
TTGGCGGTGGCCATATCCCCCTCGGCCCTGGTATTCCTGGTGCAGCCAGCGGCTGGTGAAGAGCGTTACT
CTTGACCAGCCAGCTGTGCGCGCTGACCTCATCCCCCTGGAGGTCCCTACTGGTGCCAGCAGCCCCAC
CCAGAGAGACTGGCAGGAGCAGTTAGTGGTGGGCAACAATGTTTCCTTTGACCGAGCTCATATCAGGGAG
CAGTACCTGATCCAGGGTCCCGCATGCGTTTCTGGACACCATGAGCATGCACATGGCCATCTCAGGGC
TAAGCAGCTTCCAGCGCAGTCTGTGGATAGCAGCCAAGCAGGGCAAACAAAGGTCCAGCCCCCACAAA
GCAAGGCCAGAAGTCCCAGAGGAAAGCCAGAAGAGGCCACAGCATCTATCCTGGGACTGGCTGGACATC
AGCAGTGTCAACAGTCTGGCAGAGGTGCACAGACTTTATGTAGGGGGCCCTCCCTTAGAGAAGGAGCCTC
GAGAACTGTTTGTGAAGGGCACCATGAAGGACATTCGTGAGAACTCCAGGACCTGATGCAGTACTGTGC
CCAGGACGTGTGGGCCACCCATGAGGTTTTCCAGCAGCAGCTACCGCTCTTCTGGAGAGGTGTCCCCAC
CCAGTACTCTGGCCGGCATGCTGGAGATGGGTGTCTCCTACCTGCTGTCAACCAGAAGTGGGAGCGTT
ACCTGGCAGAGGCACAGGGCACTTATGAGGAGCTCCAGCGGGAGATGAAGAAGTCGTTGATGGATCTGGC
CAATGATGCCTGCCAGCTGCTCTCAGGAGAGAGGTACAAAGAAGACCCCTGGCTCTGGGACTGGAGTGG



[View online >](#)

GACCTGCAAGAATTTAAGCAGAAGAAAGCTAAGAAGGTGAAGAAGGAACCCAGCCACAGCCAGCAAGTTGC
CCATCGAGGGGGCTGGGGCCCTGGTGATCCCATGGATCAGGAAGACCTCGGCCCTGCAGTGAGGAGGA
GGATTTCAACAAGATGTCATGGCCCGCCTGCTTGCAGAAGCTGAAGGGGACCACAGAGCTCCTGCC
AAGCGGCCACACCTTCTGGACACCCTGGATGGTACCGGAAGCTCTGCCCCGGCTAGACGACCCTG
CATGGACCCCGGGCCAGCCTCCTCAGCTGCAGATGCGGGTACACCTAAACTCATGGCACTTACCTG
GGATGGCTTCCCTCTGCACTACTCAGAGCGTCATGGCTGGGGCTACTTGGTGCCTGGGCGCGGGACAAC
CTGGCCAAGCTGCCGACAGGTACCACCCTGGAGTCAGCTGGGGTGGTCTGCCCCACAGAGCCATCGAGT
CCCTGTACAGGAAGCACTGTCTCGAACAGGGGAAGCAGCAGCTGATGCCCAAGGAGCCGCGCTGGCGGA
GGATTCCTGCTCACTGACAATAGTGCCATATGGCAAACGGTAGAAGAACTGGATTACTTAGAAGTGGAG
GCTGAGGCCAAGATGGAGAACTTGCAGCTGCAGTGCCAGGTCAACCCCTAGCTCTGACTGCCCGTGGTG
GCCCAAGGACACCCAGCCAGCTATCACCATGGCAATGGACCTTACAACGACGTGGACATCCCTGGCTG
CTGGTTTTCAAGCTGCCTCACAAGGATGGTAATAGCTGTAATGTGGGAAGCCCTTTGCCAAGGACTTC
CTGCCAAGATGGAGGATGGCACCCTGCAGGCTGGCCAGGAGGTGCCAGTGGGCCCCGTCTGGAAA
TCAACAAAATGATTTCTTCTGGAGGAACGCCATAAACGTATCAGCTCCAGATGGTGGTGGCTGCC
CAGGTCAGCTCTGCCCCGTGTGTATCAGGCACCCGACTATGATGAGGAAGCCCTCTATGGGGCCATC
CTGCCCAAGTGGTGACTGCCGGCACCATCACTGCGGGCTGTGGAGCCACATGGCTACCGCCAGCA
ATGCCCGGCTGACCGAGTAGGCAGTGAGTTGAAAGCCATGGTGCAGGCCCCACCTGGCTACACCCTGT
GGTGCTGATGTGGACTCCCAAGAGCTGTGGATTGCAGCTGTGCTTGGAGACGCCCACTTTGCCGGCATG
CATGGCTGCACAGCCTTTGGGTGGATGACACTGCAGGGCAGGAAGAGCAGGGGCACTGATCTACACAGTA
AGACAGCCACTACTGTGGGCATCAGCCGTGAGCATGCCAAAATCTTCAACTACGGCCGATCTATGGTGC
TGGGCAGCCCTTTGCTGAGCGCTTACTAATGCAGTTTAAACCACCGGCTCACACAGCAGGAGGCAGCTGAG
AAGGCCAGCAGATGTACGCTGCCACCAAGGGCCTCCGCTGGTATCGGCTGTCGGATGAGGGCGAGTGGC
TGGTGAGGGAGTTGAACCTCCCAGTGGACAGGACTGAGGGTGGCTGGATTTCCCTGCAGGATCTGCGCAA
GGTCCAGAGAGAACTGCAAGGAAGTCACAGTGAAGAAGTGGGAGGTGGTTGCTGAACGGGCATGGAAAG
GGGGGCACAGAGTCAGAAATGTTCAATAAGCTTGAGAGCATTGCTACGCTGACATACCAGTACCCCGG
TGCTGGGCTGCTGCATCAGCCGAGCCCTGGAGCCCTCGGCTGTCCAGGAAGAGTTTATGACCAGCCGTG
GAATTGGGTGGTACAGAGCTCTGCTGTTGACTACTTACACCTCATGCTTGTGGCCATGAAGTGGCTGTT
GAAGAGTTTGCCATAGATGGGCGCTTCTGCATCAGCATCCATGACGAGGTTGCTACCTGGTGGGGAGG
AGGACCGCTACCGCGCTGCCCTGGCCTTGAGATCACCAACCTCTTGACCAGGTGCATGTTGCCTACAA
GCTGGGTCTGAATGACTTGCCCCAGTCAGTCGCCTTTTTTTCAGTGCAGTCGATATTGACCGGTGCCTCAGG
AAGGAAGTGACCATGGATTGTAACCCCTTCCAACCAACTGGGATGGAAGGAGATACGGGATCCCC
AGGGTGAAGCGCTGGATATTTACCAGATAATTGAACTCACCAAAGGCTCCTTGAAAAACGAAGCCAGCC
TGGACCA

ACGCGTACGCGGCCGCTCGAGCAGAACTCATCTCAGAAGAGGATCTGGCAGCAAATGATATCCTGGATT
ACAAGGATGACGACGATAAGGTTTAA

Protein Sequence: >RC226368 protein sequence
 Red=Cloning site Green=Tags(s)

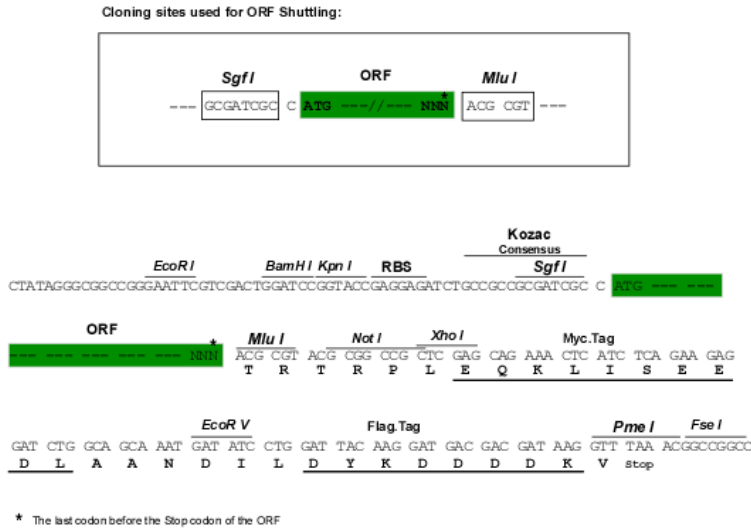
```
MSRLLWRKVAGATVGGPVPAPGRWVSSVPSADPSDGRRRRQQQQQQQQQQQQPQPQVL SSEGGLR
HNPLDIQMLSRGLHEQIFGQGGEMPGEAAVRRSVEHLQKHGLWGQPAVPLPDVELRPLPYGDNLDQHFR
LLAQKQSLPYLEAANLLLAQQLPPKPPAWAWAEGWTRYGPEGEAVPVAIPEERALVFDVEVCLAEGTCPT
LAVAI SPSAWYSWCSQRLVEERYSWTSQLSPADLIPLEVPTGASSPTQRDWQEQLVVGHNVSFDRAHIRE
QYLIQGSRMRFLLDTMSMHMAISGLSSFQSLWIAAKQGHKVPPTKQKQKSRKARRGPAISSWDWLDI
SSVNSLAEVHRLYVGGPPELEKEPRELFVKGTMKDIRENFQDLMQYCAQDVWATHEVFQQQLPLFLERCPH
PVTLAGMLEMGVSYLPVNQNWERYLAEAQGTYEELQREMKKSMDLANDACQLLSGERYKEDPWLWLEW
DLQEFKQKAKKVKKEPATASKLPIEGAGAPGDPMDQEDLGPCSEEEEFQQDVMARACLKQKGTTELLP
KRPQHLPGHPGWYRKLCPRLDDPAWTPGPSLLSLQMRVTPKLMALTWDGFPLHYSERHWGVLVPGRRDN
LAKLPTGTTLESAGVVCYRAIESLYRKHLEQKQQLMPQEAGLAEFLLTDNSAIWQTVEELDYLEVE
AEAKMENLRAAVPGQPLALTARGGPKDTPSYHHGNGPYNDVDIPGCWFKLPHKDGNSCNVGSFPAKDF
LPKMEDGTLQAGPGGASGPRALEINKMISFWRNAHKRISSQMVVWLPKRSALPRAVIRHPDYDEEGLYGA
LPQVVTAGTITRAVEPTWLTASNARPDVGSSELKAMVQAPPGYTLVGADVDSQELWIAAVLGDHAFAGM
HGCTAFGWMTLQGRKSRGTDLHSKTATTVGI SREHAKIFNYGRIYAGQPFAERLLMQFNHRLTQQAEE
KAQQMYAATKGLRWYRLSDEGEWL VRELNLPVDRTEGGWISLQDLRKVQRETARKSQWKKWEVVAERAWK
GGTESEMFNKLESIA TSDIPRTPVLGCCISRALPSAVQEEFMTSRVNWVQSSAVDYLHMLVMAMKWL
EEFAIDGRFCISIHDEVRYLVREEDRYRAALALQITNLLTRCMFAYKLGNDLPQSVAFFSAVDIDRCLR
KEVTMDCKTPSNPTGMERRYGIPQGEALDIYQIIELTKGSLEKRSQPGP
```

TRTRPLEQKLISEEDLAANDILDYKDDDDKV

Chromatograms: https://cdn.origene.com/chromatograms/mk6821_d02.zip

Restriction Sites: SgfI-MluI

Cloning Scheme:

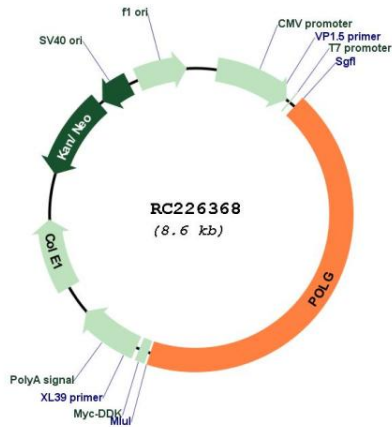


ACCN: NM_001126131

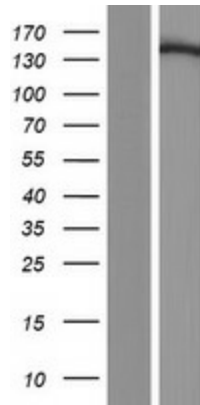
ORF Size: 3717 bp

OTI Disclaimer:	The molecular sequence of this clone aligns with the gene accession number as a point of reference only. However, individual transcript sequences of the same gene can differ through naturally occurring variations (e.g. polymorphisms), each with its own valid existence. This clone is substantially in agreement with the reference, but a complete review of all prevailing variants is recommended prior to use. More info
OTI Annotation:	This clone was engineered to express the complete ORF with an expression tag. Expression varies depending on the nature of the gene.
Components:	The ORF clone is ion-exchange column purified and shipped in a 2D barcoded Matrix tube containing 10ug of transfection-ready, dried plasmid DNA (reconstitute with 100 ul of water).
Reconstitution Method:	<ol style="list-style-type: none">1. Centrifuge at 5,000xg for 5min.2. Carefully open the tube and add 100ul of sterile water to dissolve the DNA.3. Close the tube and incubate for 10 minutes at room temperature.4. Briefly vortex the tube and then do a quick spin (less than 5000xg) to concentrate the liquid at the bottom.5. Store the suspended plasmid at -20°C. The DNA is stable for at least one year from date of shipping when stored at -20°C.
RefSeq:	NM_001126131.2
RefSeq Size:	4452 bp
RefSeq ORF:	3720 bp
Locus ID:	5428
UniProt ID:	P54098
Cytogenetics:	15q26.1
Protein Families:	Druggable Genome
Protein Pathways:	Metabolic pathways
MW:	139.6 kDa
Gene Summary:	Mitochondrial DNA polymerase is heterotrimeric, consisting of a homodimer of accessory subunits plus a catalytic subunit. The protein encoded by this gene is the catalytic subunit of mitochondrial DNA polymerase. The encoded protein contains a polyglutamine tract near its N-terminus that may be polymorphic. Defects in this gene are a cause of progressive external ophthalmoplegia with mitochondrial DNA deletions 1 (PEOA1), sensory ataxic neuropathy dysarthria and ophthalmoparesis (SANDO), Alpers-Huttenlocher syndrome (AHS), and mitochondrial neurogastrointestinal encephalopathy syndrome (MNGIE). Two transcript variants encoding the same protein have been found for this gene. [provided by RefSeq, Jul 2008]

Product images:



Circular map for RC226368



Western blot validation of overexpression lysate (Cat# [LY426664]) using anti-DDK antibody (Cat# [TA50011-100]). Left: Cell lysates from untransfected HEK293T cells; Right: Cell lysates from HEK293T cells transfected with RC226368 using transfection reagent MegaTran 2.0 (Cat# [TT210002]).