

Product datasheet for RC226367

PHLDB2 (NM_001134437) Human Tagged ORF Clone

Product data:

Product Type:	Expression Plasmids
Product Name:	PHLDB2 (NM_001134437) Human Tagged ORF Clone
Tag:	Myc-DDK
Symbol:	PHLDB2
Synonyms:	LL5b; LL5beta
Mammalian Cell Selection:	Neomycin
Vector:	pCMV6-Entry (PS100001)
E. coli Selection:	Kanamycin (25 ug/mL)
ORF Nucleotide Sequence:	>RC226367 representing NM_001134437 Red=Cloning site Blue=ORF Green=Tags(s)

TTTTGTAATACGACTCACTATAGGGCGGCCGGAATTCGTCGACTGGATCCGGTACCGAGGAGATCTGCC
GCC**CGATCGCC**

ATGGAGGAGGAGGATACCAAGAGAGAGGTGCCCAAGGAAGATGGAGTTGGTGTGTGCAACATTTTCGATT
CCAGCAAGATTATGGAAGAGCATAGCTACATACAAAAGGAGCTAGATTTACAAAATGGTAGCTTAGAGGA
AGACTCTGTGGTGCATTCTGTTGAGAACGATTCCCAAAACATGATGGAGAGCCTCAGCCCAAAGAAATAC
TCTTCCAGTCTGAGATTTAAAGCCAATGGAGACTATTCTGGCTCCTATTTAACCCCTCACAACTGTGC
CTGCAAAGAGAAGCCCTTCTCCTTTGGGAACAGTGTGAGAAGCAGCCCTCCTTAGCCAAAATCCAGGG
AAGCAAGCAGTTCTTATGATGGAAGTACAAAATATTCCTATGAAACCTCCAACCTTTACTCAAC
ACTACATCCTCCCTCAGTGGATATCCACTTGGAAAGCAGACTTTGATCATTATACTGGCCGGGACAGTG
AAAGGGCCTTGAGGCTCTCAGAGAAGCCTCCCTATTCCAAATATAGCTCAAGGCATAAATCGCATGACAA
TGTCTACTCTCTTGAGGGCTGGAAGGTCGGAAGGCATCTGGCTCGCTCCTGGCCATGTGGAATGGAAGT
TCCCTGAGTGATGCTGGCCCGCTCCTATCAGCAGATCGGGAGCCGCAAGCATGCCTTCAAGCCAAAGC
AAGCCAGGAAAATGAGCATTGAGGACAGCCTGGCGCTTCAACCAAGTAACTAGACACAAGGAGCTTGC
ATCTGAAAACATCAATTTGAGAAGTACTCCAGCAGCAGCCTGAGTCACATGGGAGCCTACAGC
CGATCACTTCCAGGTTGTACAGAGCCACAGAGAACCAGCTGACACCTCTCAGTTGCCTCAAGAAAAT
CTCTGGGCAATTCAAAACGAACAAAACCTTGGGGAAAAGGATCTACCTCATAGCGTAATAGACAATGACAA
TTACCTTAATTTTTCTTCTTTGAGCTCAGGGGCTTTACCTATAAAAACCTCTGTTCTGAAGGCAATCCT
TATGTAAGTTCTACCCTCAGTGTCCCTGCCAGTCCACGAGTGGCTCGGAAGATGCTTCTGGCCTCCACCT
CCTCCTGTGCCTCTGATGACTTTGATCAGGCTTCATATGTGGGACAAAACCCGAGTCATTCACTTCTTGC
TGGAGAGTCAGACAGAGTTTTTGGCAGCAGGAGAACTTCTCTTGTGGATCTGTGGAATTTGATGAGGCA
GATTTGGAAGCCTCAGACAGGCTCAGGAACCCCGAGCTGCCCTTCGGGAACGGAAGCAGTATTA
GCTCCATTTGAGACGTGATGACCTGATGGATTATCACCAGGCGGAGAGGGAGGAAAGACTCAGGGAGCA
GGAATGGAGCGATTGGAGAGACAGCTGTGGAGACCATCTCAGTCTCTGTGCTGAATACAAAAGCCT



[View online »](#)

GACAGTCGCTTATCTACTGGGACCACCGTGAAGATGTGCAGAAAATCAACAAGGAGCTTGAGAAGCTGC
AGCTCTCTGATGAGGAGTCTGTGTTTGAGGAAGCCCTCATGAGCCCTGACACAAGATACAGGTGCCACCG
GAAAGACTCCCTCCCTGATGCAGACTTGCCAAGCTGTGGGAGTCTCAGTCAGAGCAGTGCCAGCTTCTTT
ACCCCCAGGAGCACCAGGAATGATGAACTACTCAGTGACCTCACCCGGACTCCTCCACCACCATCTCCA
CCTTTCCGAAAGCTTCCAGCGAGTCTCTTATCTAAGTATCCTACCAAAGACCCAGAGGGTATAAGTGA
AGAACAGAGATCTCAGGAGTTGGCTGCAATGGAAGAAACCCGGATAGTCATTCTGAACAACCTCGAGGAA
CTTAAGCAAAAAATCAAAGACATAAATGATCAGATGGATGAGTCTTTCAGAGAGTTGGATATGGAATGTG
CTCTTTTGGATGGAGAACAGAAATCTGAAACAACCTGAACCTATGAAGGAGAAGGAGATTTTGGATCATCT
AAACCGGAAAAATAGTGAACCTGGAAAAGAACATTGTTGGTGAAGAACCAAGGATGCTGACCTGTTGGAT
GTTGAAAGCAAACACTTTGAAGACCTGGAGTTCAGCAGCTTGAACATGAGAGCCGCTAGATGAAGAAA
AGGAGAAGCTTGACTCAACAGCTCCTGCGTGAAGTTGCTGAATATCAACGGAAACATCGTTTCTAGAAAAGGA
AAAAATTTCTGCATTGAAAAAGCAAGCCAATCACATTGTTGAGCAGGCTCAGAGAGAGCAAGATCATTTT
GTGAAAGAAAAGAATAATTTAATATGATGTTGCAAAGAGAAAAGGAGAATCTTTGTAATTTGGAAAAGA
AATACTCCAGCCTCTCTGGGGGAAAGGGTTCCCGTTAACCCCAATACTTTAAAAGAGGGCTATATCAG
TGTAATGAGATTAATGAGCCGTGTGGCAATCCACGAATCTATCCCTTCCACTCAGTTTCTGCTGAT
GCTGATGCTGTTGCCACTGAGCCTGCCACAGCTGTGCTGGCGAGCCAGCCACAGAGTAAAGAGCACTTTA
GAAGTCTGGAAGAAAGGAAAAACAGCATAAAGAGGCCTCTATCTGAGTGATACTTTGCCTCGAAAGAA
AACCACATCTTCCATCTCCCAATTTAGCAGTGTACTATGGGGAGAAGCATCACCCAAAGGCCAT
CTGCCCTAGGACAGAGTAACAGCTGTGGAAGTGTGCTCCCTCCCTCACTGGCAGCCATGGCCAAAGACT
CAGAATCTCGGAGGATGCTCAGAGGTTAATCACCAACAGATGAGTGAAGGACACAGGCAGAAATCTGA
ATTTTATAACCGCACAGCATCTGAATCAAATGTCTACTTGAATAGTTTCCATTATCCAGATCACAGCTAC
AAGGACCAGGCCCTTTGATACTCTGAGCCTCGATAGCTCTGATAGCATGGAGACCAGCATCTCTGCTTGT
CACCAGACAACATCTCTAGTGCCAGCACTTCAAATATTGCTAGAATAGAAGAAATGGAGAGACTTTTGAA
GCAGGCTCATGCAGAAAAGACGCGGCTGCTCGAATCCAGGGAACGGGAAATGGAAGCCAAAAACGAGCC
CTGGAAGAAAGAAAACGACGCGGGGAAATCCTGAAAAACGATTACAGGAAGAACTAGCCAGAGGCAGA
AGTTAATAGAAAAGGAAGTAAAAATAAGGGAGAGACAAAGGGCACAGGCTCGTCTTTGACACGCTACCT
GCCTGTCCGGAAGGAAGACTTTGATTTGCGGAGCCATGTAGAGACTGCTGGCCACAATATTGACACCTGT
TACCATGTATCAATCACAGAGAAGACCTGCCGAGGATTCTCATCAAATGGGTGGGAAAATTTAAACGT
GGAAAAACGTTGGTTTGTGTTTGTGATCGGAACAAGCGAACATTCTTATTATGCAGACAAGCATGAAAC
TAAATTGAAAGGAGTAATATACTTTCAAGCCATTGAAGAAGTCTATTATGATCACCTCAAGAATGCTAAT
AAGAGTCTAATCCGTTACTCACCTTTAGCGTCAAGACTCATGACAGAATCTATTATATGGTAGCCCAT
CGCCAGAAGCCATGCGGATCTGGATGGATGTTATAGTTACGGGGCAGAAGGTTACTACTCTTCTGTT
G

ACGCGTACGCGGCCGCTCGAGCAGAACTCATCTCAGAAGAGGATCTGGCAGCAATGATATCCTGGATT
ACAAGGATGACGACGATAAGGTTTAA

Protein Sequence: >RC226367 representing NM_001134437
 Red=Cloning site Green=Tags(s)

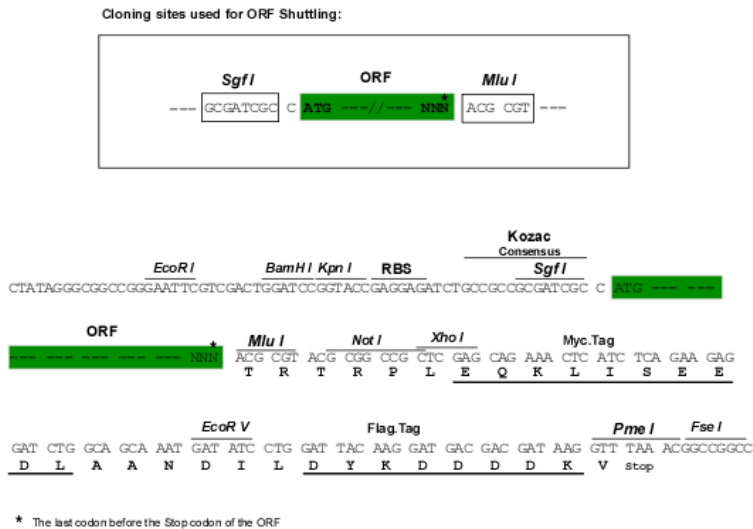
MEEEDTKREVPKEDGVGDVQHFDDSSKIMEEHSYIQKELDLQNGSLEEDSVVHSEVENDSQNMESLSPKKY
 SSSLRFKANGDYSGYLTL SQPVP AKRSP SPLGTSVRSSPSLAKIQGSKQFSYDGT DKNIPMKPPTPLL N
 TTSSL SGYPLGRADF DHYTGRD SERALRLSEKPPYSKYSSRHKSHDNVYSLGGLEGRKASGSLAMWNGS
 SLSDAGPPPI SRSGAAMPSSPKQARKMSIQDSLALQPKLTRHKELASENINLRTRKYSSSSL SHMGAYS
 RSLPRLYRATENQLTPLSLPPRNSLGN SKR TKLGEKDLPHSVIDNDNYLNFSSLSSGALPYKTSASEGNP
 YVSTLSVPASPRVARKMLLASTSSCASDDFDQASYVGTNP SHSLLAGESDRVFA TRRNFCGSGSVEFDEA
 DLESLRQASGTPQPALRERKSSISSISGRDDLMDYHRRQREERLREQEMERLERQRLETILSLCAEYTKP
 DSRLSTGTTVEDVQKINKELEKLQLSDEESVFEEALMSPDTRYRCHRKDSL PDADLASCGLSQSSASFF
 TPRSTRNDELLSDLTRTPPPSSTFPKASSESSYL SILPKTPEGISEEQRSQELAAMEETRIVILNLEE
 LKQKIKDINDQMFRELDMECALLDGEQKSETTELMKEKEILDHLNRKIAELEKNIVGEKTKDADLLD
 VESKHFEDLEFQQL EHSRLDEEKENL TQQLREVAEYQRNIVSRKEKISALKKQANHIVQQAQREQDHF
 VKEKNLIMMLQREKENL CNLEKKYSSLSGGKGFVNPNTLKEGYISVNEIN EPCGNSTNLSPSTQFPAD
 ADAVATEPATAVLASQPQSKHEFRSLEERKKQHK EGYLSDTLPRKKTSSISPHFSSATMGRSITPKAH
 LPLGQNSCGSVLPPSLAAMAKDSESRMLRGYNHQQMSEGRQKSEFYNR TASESNVYLN SFHYDHSY
 KDQAFDTLSLSDSSDMETSISACSPDNISSASTSNIARIEEMERLLKQAHAEKTRLLESREREMEAKKRA
 LEEEKRRREILEKRLQEETSQRQKLEIEKVKIRERQRAQARPLTRYLPVRKEDFDLRSHVETAGHNIDTC
 YHVSITEKTCRGFLIKMGGKIKTWKKRWFVDRNKRTFSYYADKHETKLGVIYFQAIIEVYVDHLKNAN
 KSPNPLLTF SVKTHDRIY YMVAPSP EAMRIWMDVI VTGAEGYTHFLL

TRTRPLEQKLISEEDLAANDILDYKDDDDKV

Chromatograms: https://cdn.origene.com/chromatograms/mk8031_f06.zip

Restriction Sites: SgfI-MluI

Cloning Scheme:

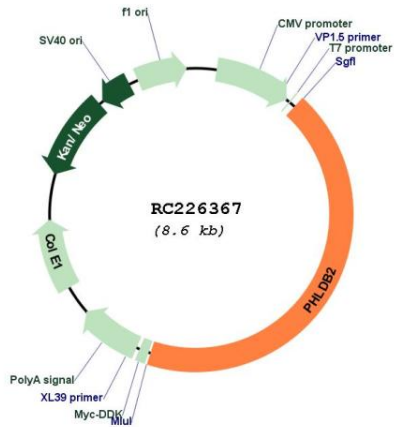


ACCN: NM_001134437

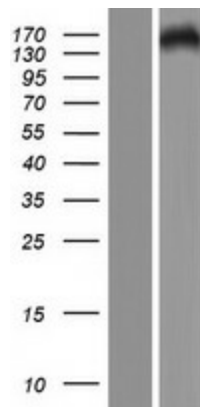
ORF Size: 3711 bp

OTI Disclaimer:	The molecular sequence of this clone aligns with the gene accession number as a point of reference only. However, individual transcript sequences of the same gene can differ through naturally occurring variations (e.g. polymorphisms), each with its own valid existence. This clone is substantially in agreement with the reference, but a complete review of all prevailing variants is recommended prior to use. More info
OTI Annotation:	This clone was engineered to express the complete ORF with an expression tag. Expression varies depending on the nature of the gene.
Components:	The ORF clone is ion-exchange column purified and shipped in a 2D barcoded Matrix tube containing 10ug of transfection-ready, dried plasmid DNA (reconstitute with 100 ul of water).
Reconstitution Method:	<ol style="list-style-type: none">1. Centrifuge at 5,000xg for 5min.2. Carefully open the tube and add 100ul of sterile water to dissolve the DNA.3. Close the tube and incubate for 10 minutes at room temperature.4. Briefly vortex the tube and then do a quick spin (less than 5000xg) to concentrate the liquid at the bottom.5. Store the suspended plasmid at -20°C. The DNA is stable for at least one year from date of shipping when stored at -20°C.
RefSeq:	NM_001134437.2
RefSeq ORF:	3714 bp
Locus ID:	90102
UniProt ID:	Q86SQ0
Cytogenetics:	3q13.2
MW:	139.8 kDa
Gene Summary:	Seems to be involved in the assembly of the postsynaptic apparatus. May play a role in acetylcholine receptor (AChR) aggregation in the postsynaptic membrane (By similarity). [UniProtKB/Swiss-Prot Function]

Product images:



Circular map for RC226367



Western blot validation of overexpression lysate (Cat# [LY427437]) using anti-DDK antibody (Cat# [TA50011-100]). Left: Cell lysates from untransfected HEK293T cells; Right: Cell lysates from HEK293T cells transfected with RC226367 using transfection reagent MegaTran 2.0 (Cat# [TT210002]).