

Product datasheet for **RC226365**

AUTS2 (NM_001127231) Human Tagged ORF Clone

Product data:

Product Type: Expression Plasmids
Product Name: AUTS2 (NM_001127231) Human Tagged ORF Clone
Tag: Myc-DDK
Symbol: AUTS2
Synonyms: FBRSL2; MRD26
Mammalian Cell Selection: Neomycin
Vector: pCMV6-Entry (PS100001)
E. coli Selection: Kanamycin (25 ug/mL)
ORF Nucleotide Sequence: >RC226365 representing NM_001127231
Red=Cloning site Blue=ORF Green=Tags(s)

TTTTGTAATACGACTCACTATAGGGCGGCCGGGAATTCGTCGACTGGATCCGGTACCGAGGAGATCTGCC
GCC**CGATCGCC**

ATGGATGGCCCGACGCGGGGCCATGGACTCCGCAAAAAGCGGGGTGCGGTGCGAGCGAGACCGGGAGA
GGCGCTCCCGGGCGGGCTGGGGCCGGCGCGGCCGGCGGGGCTGGCCGACCCGGGCGCTCTC
ACTCGCTCGTCGTCGGGCTCCGACAAGGAAGACAATGGGAAGCCCCGTCTCCGCCCGTCCCGGCC
AGACCCCGCGGAGGAAGCGGAGAGAGTCCACCTCGGCAGAAGAGGACATCATTGATGGATTTGCCATGA
CCAGCTTTGTCACTTTTGAAGCGCTGGAGAAAGATGTAGCACTTAAGCCTCAGGAACGTGTGGAGAAACG
CCAGACGCCCTGACCAAGAAGAAACGAGAAGCACTTACCAATGGCTTGTCTTTCAATCAAGAAGAGC
AGACTCAGCCACCCACCACTACAGCTCAGATCGAGAAAATGACCGCAATCTCTGCCAGCACCTTGGGA
AGAGAAAGAAAATGCCGAAGGCACTCAGACAGCTCAAGCCAGGACAGAACAGCTGCAGGGACAGTGACAG
TGAAAGTGCCAGTGGAGAATCCAAGGGCTTCCACCGGAGCAGCTCTCGGAAAGGCTCAGTGATAGTTCA
GCTCCTCCAGCTTGGGAACAGGCTACTTCTGTGACAGTGACAGTGACCAGGAAGAGAAGGCATCAGATG
CCAGCTTGAAAACTCTTCAACTGTTATTGTAACAAGATCCGGGTTAGGTGTTGGCAGCCTACC
AGAATAGACAGCCAGGATGCAGGGCCGATTGTCCCAAGATATCGGGTCTAGAGAGAAGCCAGGAGAAG
AGCCAGGACTGTTGCAAAGAGCCAATCTTTGAGCCTGTGGTCTTAAAGACCCCTGCCCTCAGGTGCGAC
AGCCAATACCCAGCCGACAGCGAGCCCAACTCCGAGCTCCTTCTCCGACCCTGACTTGGTGCAGCG
CACAGAGGCCCACTCAACCCCACTCTGAGTACACAGCCACCACAGGGCCCTCTGAGGCCAGCTC
CAGCCTGCCCCGAGCCTCAGGTGCAGAGGCCACCCAGGCCACAGTCCCCACCCAGCTGCTCCATCAGA
ACCTCCCACCTGTGCAGGCCACCCCTCTGCTCAGAGCCTCTCCAGCCATTGTCAGCCTACAACAGCAG
TAGCTTAAAGCCTCAACAGTTTAAGCAGCAGCAGAAGCAGCACTCCAGCGAAGACTCAGCCCGCCCCACT
CACATCTCCACCACCCCTCTGCTCCCGTTCCTCTCCCTGCCAACCACAGCCCTGCACAGCT
TCACACCACCTCCAGCCCCCGCACACTCACATCACCCAATATGTTTGGCCCTCCACTGCTCTGCC
TCCTCCACCACCTGACATCAGGAAGTCTGCAGGTGGCCGACACCCGGCGGGAGCACTTACTCAGAG



[View online »](#)

CAAGACATCTTGCACAGGAACTGAACACTCGTTTTTGGCCTCTCAGAGTGCTGACCGCGGGGCTTCCC
TGGGCCCTCCGCCCTACCTGCGGACCGAGTTCCATCAGCACCAGCACCAGCACCAGCACCCACCAGCA
CACGCACCAGCACACCTTACGCGGTTCCCCACGCCATCCCACCACCGCCATCATGCCGACGCCAGCA
CCTCCCATGTTTGACAAATACCTTACAAAAGTTGACCCATTCTACCGGCACAGTCTTCCATTCTATC
CTCCTGCAGTGTGGGCATCCCCCTATGATCCCACCCACTGGCCCTTTTGGTTCACACAAAGGAGCATT
TCAGCCGAAGTTGACAGATCCTTTCAGACCTATGTTAAGGAAACCAGGGAAGTGGTGTGCTATGCATGTT
CACATCGCCTGGCAGATTTACCACCACCAACAGAAAGTCAAGAAACAGATGCAGTCAGACCACATAAGC
TGGACTTTGGACTGAAACCTGAGTTCTGAGCCGCCCTCAGGCCCAAGTCTTTTGGAGCCATCCACCA
CCCCATGACCTGGCACGGCCTTCAACTTTGTTCTCTGCCGCTGGTGTGCACACCCAAGTGGACCCCT
TTTGGGCCACCTCCTCATCACAGCAACTTCTCAACCCTGCTGCCACCTAGAGCCTTTTAAATCGGCCGT
CTACATTCACAGGCCTAGCAGCAGTTGGTGGCAATGCCTTCGGGGGACTTGAAAATCCTTCCGTTACACC
CAACTCAATGTTTCGGCCACAAGGATGGCCCCAGTGTGCAGAACTTTCAGCAACCCTCACGAACCCTGGAAC
CGGCTGCACCGAACGCCTCCGTCGTTCCCGACCCCTCCGCCCTGGCTGAAGCCAGGGGAGCTGGAGCGCA
GCGCGTCCGCTGCAGCTCATGACAGAGATAGAGATGTAGATAAACGAGACTCATCTGTTAGTAAAGATGA
CAAAGAAAGGAAAGCGTCGAGAAGAGACTCCAGCCACCCTTACCAGCACCTGTCTCCCGGTGAAT
GCCTGGGACATACCCGAGCTCCACTGAACAGATCCGGGCTCATCTGAACACTGAGGCTCGGGAGAAGG
ACAAACCCAAAGAGAGGGGAGAGAGACCCTCGGAATCCCGCAAGGACCTGGCCGCGCAGCAGCACAAAGGC
GAAAGAGGGCCACCTGCCGAGAAGGACGGGCACGGCCACGAGGGGCGCCCGGGGCGAAGAGGCCAAG
CAGCTGGCCCGGGTGCCTCTCCCTACGTGCGGACCCCGTGGTGGAGAGTGCCAGGCCAACAGCACCT
CGAGCCGGGAGGCGGAGCCGCAAGGGTGAGCCGGCCTACGAGAACCCCAAGAAGAGCTCCGAGGTCAA
GGTGAAGGAGGAGCGGAAGGAAGACCATGACCTGCCTCCAGAGGCCCGCAGACCCACCGGGCTCGGAG
CCGCCCGCTCCCAACTCCTCGTCCAGCGTGCACCCGGGGCCCTGGCCTCGATGCCATGACGGTGGGG
TGACGGGCATTCACCCATGAACAGCATCAGCAGCCTGGACAGGACTCGCATGATGACCCCTTCATGGG
CATCAGCCCCCTCCCGGGCGGAGAGCGCTTCCCGTACCCTTCTTCCACTGGGACCCCATCCGGGACCCC
TTGAGGGATCCTTACCGAGAATTGACATTCACCGGAGAGACCCGCTGGGCAGGGACTTCTGCTAAGGA
ACGACCCGCTCCACCGGCTCTCGACTCCCCGGTGTACGAAGCCGACCGCTCCTTCAGGGACCGGGAGCC
TCACGACTACAGCCACCACCACCACCACCACCACCACCCTGTCTGTGGACCCTCGGCGGGAGCACGAG
CGGGGAGGCCACCTGGACGAGCGGGAGCGCTTGCACATGCTCAGAGAAGACTACGAGCACACGCGGCTCC
ACTCCGTGACCCCGCTCCCTCGACGGACACCTCCCCACCCAGCCTCATACCCCGGGACTCCCCAG
CATGCACTATCCCGCATCAGCCCCACCGGGCAACCAGAACGGACTCCTCAACAAGACCCTCCGACA
GCAGCGCTGAGCGCACCTCCCCGCTCATCTCCACGCTGGGGGGCCCGCGGTCTCTCCAGAAGGACGA
CTCCTCTGTCCGACAGATAAAGGAGAGGCCCCCTTCCACACGCTGAAGGATATCGAGGCCCGA

ACGCGTACGCGGCGGCTCGAGCAGAACTCATCTCAGAAGAGGATCTGGCAGCAAATGATATCCTGGATT
ACAAGGATGACGACGATAAGGTTTAA

Protein Sequence: >RC226365 representing NM_001127231
 Red=Cloning site Green=Tags(s)

```
MDGPTRGHGLRKKRRSRQRDRERRSRGGLGAGAAGGGGAGRTRALSLASSSGSDKEDNGKPPSSAPSRP
RPPRRKRRESTSAEEDIIDGFAMTSFVTFEALEKDVALKPQERVEKRQTPLTKKKREALTNLSFHSKKS
RLSHPHHYSSDRENRNLQHLGKRKKMPKALRQLKPGQNSCRDSDSESASGESKGFHRSSSRERLSDSS
APSSLGTGYFCSDSDQEEKASDASSEKLFNTVI VNKDPELGVGTLPEHDSQDAGPIVPKISGLERSQEK
SQDCCKEPIFEPVVLKDCPCQVAQPIQPQTEPQLRAPSPDPLVQRTEAPPQPPPLSTQPPQGPEAQL
QPAPQPQVQRPPRPQSPTQLLHQNLPPVQAHPSAQSLSQPLSAYNSSLSLNSLSSSRSSSTPAKTQPAPP
HISHPSASPFLSLPNHSPLHSFTPTLQPPAHSHHPNMFAPPTALPPPPLTSGSLQVAGHPAGSTYSE
QDILRQELNTRFLASQSADRASLGPPPYLRTEFHQHQHQHQHTHQHTHTFTPFPHAIPTAIMPTPA
PPMFDKYPTKVDPFYRHSLFHSYPPAVSGIPPMIPPTGPFGLQGAQPKLTDPFPRMLRKGKWCAMHV
HIAWQIYHHQKVKKQMQSDPHKLDGLKPEFLSRPPGSLFGAIHHPHDLARPSLFSAGAAPTGTGTP
FGPPPHSNFLNPAAHLEPFNRPSTFTGLAAVGGNAFGGLGNPSVTPNSMFGHKDGPVQNF SNPHEPWN
RLHRTPPSFPTPPWLKPGELERSASAAHDDRDRDVKRSDSSVSKDDKERESVEKRHSSHPSPAPVLPVN
ALGHTRSSTEQIRAHLNTEAREKDKPKERERDHSERKDLAADEHKAKEGHLPEKDGHGHEGRAAGEEAK
QLARVPSYVVRTPVVESARPNSTSSREAEPRKGEPAENPKSSEVKVKEERKEDHDLPEEPQTHRASE
PPPPNSSSSVHPGLASMPMTVGVTGIHPMNSISSLDTRMMPFMGISPLPGERFPYPSFHWDPIRD
LRDPYRELDIHRDPLGRDFLLRNDPLHRLSTPRLYEADRSFRDREPHDYSHHHHHHHHPLSVDPRREHE
RGGHLDERERLHMLREDYEHTRLHSVHPASLDGHLPHPSLITPGLPSMHPRIISPTAGNQNLNKTPPT
AALSAPPPLISTLGGRPVSPRRTTPLSAEIRERPPSHTLKDIEAR
```

TRTRPLEQKLISEEDLAANDILDYKDDDDKV

Chromatograms: https://cdn.origene.com/chromatograms/mg4086_d05.zip

Restriction Sites: SgfI-MluI

Cloning Scheme:

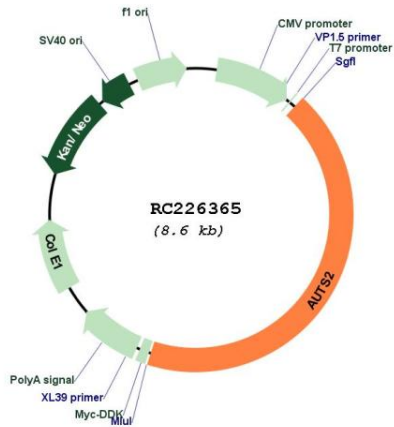


ACCN: NM_001127231

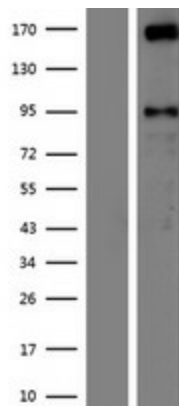
ORF Size: 3705 bp

| | |
|-------------------------------|---|
| OTI Disclaimer: | The molecular sequence of this clone aligns with the gene accession number as a point of reference only. However, individual transcript sequences of the same gene can differ through naturally occurring variations (e.g. polymorphisms), each with its own valid existence. This clone is substantially in agreement with the reference, but a complete review of all prevailing variants is recommended prior to use. More info |
| OTI Annotation: | This clone was engineered to express the complete ORF with an expression tag. Expression varies depending on the nature of the gene. |
| Components: | The ORF clone is ion-exchange column purified and shipped in a 2D barcoded Matrix tube containing 10ug of transfection-ready, dried plasmid DNA (reconstitute with 100 ul of water). |
| Reconstitution Method: | <ol style="list-style-type: none">1. Centrifuge at 5,000xg for 5min.2. Carefully open the tube and add 100ul of sterile water to dissolve the DNA.3. Close the tube and incubate for 10 minutes at room temperature.4. Briefly vortex the tube and then do a quick spin (less than 5000xg) to concentrate the liquid at the bottom.5. Store the suspended plasmid at -20°C. The DNA is stable for at least one year from date of shipping when stored at -20°C. |
| RefSeq: | NM_001127231.3 |
| RefSeq ORF: | 3708 bp |
| Locus ID: | 26053 |
| UniProt ID: | Q8WXX7 |
| Cytogenetics: | 7q11.22 |
| MW: | 136.2 kDa |
| Gene Summary: | This gene has been implicated in neurodevelopment and as a candidate gene for numerous neurological disorders, including autism spectrum disorders, intellectual disability, and developmental delay. Mutations in this gene have also been associated with non-neurological disorders, such as acute lymphoblastic leukemia, aging of the skin, early-onset androgenetic alopecia, and certain cancers. Alternative splicing results in multiple transcript variants encoding different isoforms. [provided by RefSeq, May 2014] |

Product images:



Circular map for RC226365



Western blot validation of overexpression lysate (Cat# [LY426730]) using anti-DDK antibody (Cat# [TA50011-100]). Left: Cell lysates from untransfected HEK293T cells; Right: Cell lysates from HEK293T cells transfected with RC226365 using transfection reagent MegaTran 2.0 (Cat# [TT210002]).