

## Product datasheet for **RC226364**

### **RBM20 (NM\_001134363) Human Tagged ORF Clone**

#### Product data:

Product Type:	Expression Plasmids
Product Name:	RBM20 (NM_001134363) Human Tagged ORF Clone
Tag:	Myc-DDK
Symbol:	RBM20
Mammalian Cell Selection:	Neomycin
Vector:	pCMV6-Entry (PS100001)
E. coli Selection:	Kanamycin (25 ug/mL)
ORF Nucleotide Sequence:	>RC226364 representing NM_001134363 Red=Cloning site Blue=ORF Green=Tags(s)

TTTTGTAATACGACTCACTATAGGGCGGCCGGGAATTCGTCGACTGGATCCGGTACCGAGGAGATCTGCC  
GCC**CGATCGCC**

ATGGTGCTGGCAGCAGCCATGAGCCAGGACGCGGACCCAGCGGTCCGGAGCAGCCGGACAGAGTTGCCT  
GCAGTGTGCCTGGTGCCCGGGCTCCCCGGCACCTCCGGCCCGGAGGGATGCAGCAGCCGCCCGCCG  
GCCCCAGCCACCGCCCCCGCCCAAGCCGGCTACCCAGATCATCCAAATGCCCAAGCTCCTGGAC  
AGAACCATTCTCGGTCACTAACCCGAACCTCTGCTTCCTTACCTGCCAGTCTCCAGCTGGCTCAAC  
TGCAGGCCAGCTCACCTCCACCGGTGAAGCTGGCAGACAGCTGTACCAACAACACTGCAGCCGC  
CACAGTCTGAACCAAGTCTCTCCAAAGTGGCCATGTCCAGCCTCTCTTCAATCAACTGAGGCATCCG  
TCTGTGATCACTGGCCCCACGGCCATGCTGGGGTTCCTCAACATGCTGCAGCCATACCCAGTACCCGGT  
TCCCTCTAATGCAATTGCCTTTTACCCCCAGCCAGACACGAGGCCCGGACCCTCCATGAACCTTCC  
CAACCAGCCACCCAGTGCATGGTGATGCATCCTTTCACTGGGTAATGCCTCAGACCCCTGGCCAGCCA  
GCAGTCACTTGGGCATTGGCAAGACTGGGCTGCTCCAGCTACAGCAGGATTCTATGAGTATGGCAAAG  
CCAGCTCTGGCCAGACATATGGCCCTGAAACAGATGGTCAGCCTGGCTTCTGCCATCCTCGGCCTCAAC  
CTCGGCAGTGTGACCTATGAAGGGCACTACAGCCACACAGGGCAGGATGGTCAAGCTGCCTTTTCCAA  
GATTTTTACGGACCAACTCCCAAGTTACATGTGGCCAGCGGATTTCCAGCTGAGCAGGCTGGGGCC  
TGAAAAGTGAGGTCGGGCCACTGCTGCAGGGCACAAACAGCCAATGGGAGAGCCCCATGGATTCTCGGG  
CCAAAGCAAGCCTGATCTCACAGCAGGTCCCATGTGGCCTCCACCCACAACCAGCCCTATGAGCTGTAC  
GACCCCGAGGAACCAACCTCAGACAGGACACCTCCTTCTCGGGGGTCCGGTTAACAACAGCAAACAGG  
GTTTTATCGGTGCTGGGCGGAGGGCCAAGGAGGACCAGGCGTTGCTATCTGTGCGGCCCTGCAGGCTCA  
TGAGCTGAACGACTTTCAGGTGTGGCCCCCTCACTTGCCGCATATCTGTAGCATCTGTGACAAGAAG  
GTGTTTGAATTTGAAGGACTGGGAGCTGCATGTGAAAGGGAAGCTGCACGCTCAGAAATGCCTGGTCTTCT  
CTGAAAATGCTGGCATCCGGTGTATACTTGGTTTCGGCAGAGGGAACATTGTGTGCTTCTCCCAACAGCAC  
AGCTGTTTATAACCCTGCTGGGAATGAAGATTATGCCTCAAATCTTGGAAACATCATACGTGCCCATCCCA  
GCAAGGTCATTCAGTCAAGCCCCACATTTCTTGGCTTCTGTGGGACAACCTTTTGCACAGCGGA  
AAGGGGCTGGCCGTGGTGCACATCTGCAATCTCCCTGAAGGAAGCTGCACTGAGAATGACGTCATTAA



[View online »](#)

CCTGGGGCTGCCCTTTGGAAAGGTCACATAATTACATCCTCATGAAGTCGACTAATCAGGCCTTTTATAGAG  
ATGGCTTACACAGAAGCTGCACAGGCCATGGTCCAGTATTATCAAGAAAAATCTGCTGTGATCAATGGTG  
AGAAGTTGCTCATTCCGATGTCCAAGAGATACAAGGAATTGCAGCTCAAGAAACCCGGGAAGGCCGTGGC  
TGCCATCATCCAGGACATCCATCCCAGAGGGAGAGGGACATGTTCCGGGAAGCAGACAGATATGGCCCA  
GAAAGGCCCGGTCTCGTAGTCCGGTGAGCCGGTCACTCTCCCGAGGTCCCACACTCCCAGCTTACCT  
CCTGCAGCTCTTCCACAGCCCTCCGGGCCCTCCCGGGTGACTGGGGCAATGGCCGGACTCCTGGGA  
GCACCTCCCTATGCCAGGAGGGAAGAGCGAGACCCGGCTCCCTGGAGGGACAACGGAGATGACAAG  
AGGGACAGGATGGACCCCTGGGCACATGATCGCAAACACCACCCCGGCAACTGGACAAGGCTGAGTTGG  
ACGAGCGACCAGAAGGAGGGAGGCCACCAGGAGAAAGTACCGAGATCTGGGTCTCCCAACTGCCCA  
CTCTGTGTCCAGCTACAAAAGCCGTGAAGACGGCTACTACCGAAAGAGCCCAAAGCCAAGTGGGACAAG  
TATCTGAAGCAGCAGCAGGATGCCCCGGGAGGTCCAGGAGGAAAGACGAGGCCAGGCTGCCGAAAGCA  
GACACCCCATCCGGATGACTCAGGCAAGGAAGATGGGTGGGGCCAAAGGTCACTAGGGCCCTGAGGG  
CGCCAAGGCCAAGCAGATGAGAAAAATAAACCAAGAGAAGTATAGAGACCAAGAAGGAGCTGATGAT  
AGAAAAGAAAACAATGGCAGAGAATGAGGCTGGAAGAGGAACAGGAGGGCATGGAAGAAAGCCCTC  
AATCAGTGGGCAGACAGGAGAAAGAAGCAGAGTCTCTGATCCGAAAACAAGGACAAAGAAGGAACA  
AGATTGGGAGAGTGAAAGTGAGGCAGAGGGGAGAGCTGGTATCCCACTAACATGGAGGAGCTGGTGACA  
GTGGACGAGGTTGGGGAAGAAGAAGATTTATCGTGGAACCAGACATCCCAGAGCTGGAAGAAATTTGTC  
CCATTGACCAGAAAGACAAAATTTGCCAGAAACATGTCTGTGTGACAAACCCTTAGACTTAGACCT  
GGCCAGGATTTCCCAAGGAAGGAGTCAAGGCCGTAGGGAATGGGGCTGCAGAAATCAGCCTCAAGTCA  
CCCAGAGAAGTCCCTCTGCTTCCACAAGCTGTCCAGTGACATGGACGTGGAATGCCTGGCCTAAATC  
TGGATGCTGAGCGGAAGCCAGCTGAAAGTGAGACAGGCCCTCTCCCTGGAGGATTCAGATTGCTACGAGAA  
GGAGGCAAAGGGAGTGGAGAGCTCAGATGTTTATCCAGCCCCTACAGTCCAGCAAATGTCTTCCCCTAAG  
CCAGCAGAGGAGAGGGCCCGGCAGCCAAGCCATTTGTGGATGATTGCAAGACCAGGGGGACCCCGAAG  
ATGGGGCTTGTGAAGGCAGCCCTGGAGGAGAAAGCCAGCCCCCATCGAAACTGACCTCCAAAACCA  
AGCTTGCCAAGAAGTGTGACCCCGAAAACCTCCAGGTACGTGGAATGAAATCTCTGGAGTGAGGTCA  
CCAGAGTACACTGAAGTGAAGTGAACAGCCCTTTCTTTGCCCTCTTGGGAACCAGAGGATGTGTTCA  
GTGAAGTACTAGCATTCTCTAGGGGTGGAGTTCGTGGTCCAGGACTGGCTTTTATTGCAAGCTGTGTGG  
GCTGTTCTACACGAGCGAGGAGACAGCAAAGATGAGCCACTGCCGACGCTGTCCACTACAGGAACTTA  
CAGAAATATTTGCCAGCTGGCCGAGGAGGCCCTCAAGGAGACCAGGGGGCAGATAGCCCGAGGCCAG  
AGGACAGCGGAATCGTGCCACGCTTCGAAAGAAAAAGCTC

ACGCGTACGCGGCCGCTCGAGCAGAAACTCATCTCAGAAGAGGATCTGGCAGCAAATGATATCCTGGATT  
ACAAGGATGACGACGATAAGGTTTAA

**Protein Sequence:** >RC226364 representing NM\_001134363  
 Red=Cloning site Green=Tags(s)

MVLA AAMSQDADPSGPEQPDRVACSVPGARAS PAPS GPRGMQPPPPPPQPPPPQAGLPQIIQNAAKLLD  
 KNPF SVSNPNPLLPSPASLQLAQLQAQLTLHRLKLAQTAVTNNTAAATVLNQVL SKVAMSQPLFNQLRHP  
 SVITGPHGHAGVPQHAAAIPSTRFPSNAIAFSPPSQTRGPGPSMNLNPPS SAMVMHPFTGVMPQTGQP  
 AVILGIGK TGPATAGFYEYKASSGQTYGPETD GQPGFLPSSASTSGSVTYEGHYSHTGQDGGQAAF SK  
 DFYGPNSQGS HVASGFPAEQAGL KSEVGPLLQGTNSQWESPHGFSGQSKPDLTAGPMWPPPHNQPYELY  
 DPEEPTSDRTPPSFGGRLNNSKQGF IGAGRRAKEDQALLSVRPLQAHELNDFHGVAPLHLPHICSI CDKK  
 VFDLKD WELHVKGLHAQKCLVFSENAGIRCILGSAEGLCASPNSTAVYNPAGNEDYASNLGTSYVPI P  
 ARSFTQSSPTFPLASVGTTF AQRKGAGRVVHICNLPEGSC TENDVINLGLPFGKVTNYILMKSTNQAFLE  
 MAYTEAAQAMVQYYQEKSAVINGEKLLIRMSKRYKELQLKPGKAVAAIIQDIHSQRERDMFREADRYGP  
 ERPRSRSVSRSLSPRSHTPSFTSCSSSHSPPGSRADWGNRDSWEHSPYARREEERDPAPWRDNGDDK  
 RDRMDPWAHDRKHHPRLDKAELDERPEGGRPHREKYPRSGSNLPHSVSYKSREDGGYRKEPKAKWKD  
 YLKQQQDAPGRSRRKDEARLRESRHPHPD DSGKEDGLGPKVTRAPEGAKAKQNEKNKTKRTRDRDQEGADD  
 RKENTMAENEAGKEEQEGMEESPQSVGRQEKAEFSDPENTRTRKKEQDWESESEAEGESWYPTNMEELVT  
 VDEVGEEEDFIVEPDIPELEEIVPIDQDKICPETCLCVTTTLDLDAQDFPKEGVKAVGNAAEISLKS  
 PRELPSASTSCPSMDVEMPGLNLD AERKPAESETGLSLEDSDCYEKEAKGVESSDVHPAPTQQMSSPK  
 PAEERARQPSPFVDDCKTRGTPEDGACEGSPLEEKASPP IETDLQNQACQEVLPENSRYVEMKSLEVR S  
 PEYTEVELKQPLSLPSWEPEDVFSELSIPLGVEFVVPRTGFYCKLCGLFYTSEETAKMSHCRSAVHYRNL  
 QKYLSQLAEGLKETEGADSPRPEDSGIVPRFERKKL

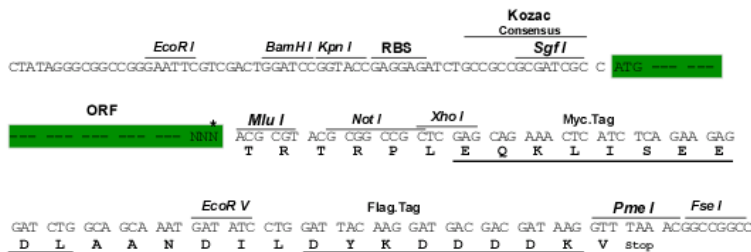
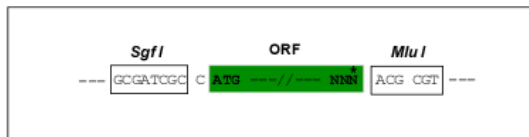
TRTRPLEQKLI SEEDLAANDILDYKDDDDKV

**Chromatograms:** [https://cdn.origene.com/chromatograms/mk8031\\_f07.zip](https://cdn.origene.com/chromatograms/mk8031_f07.zip)

**Restriction Sites:** Sgfl-MluI

**Cloning Scheme:**

Cloning sites used for ORF Shuttling:



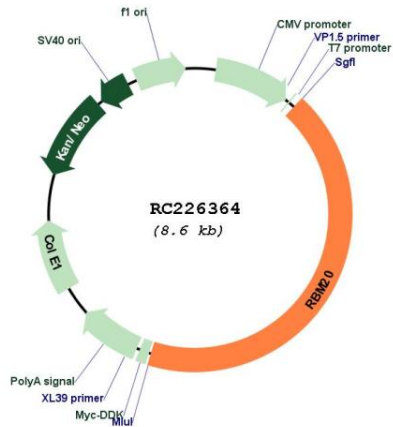
\* The last codon before the Stop codon of the ORF

**ACCN:** NM\_001134363

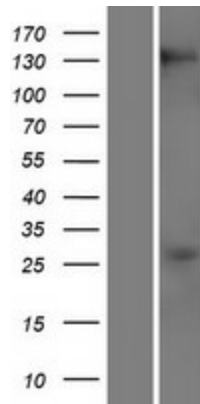
**ORF Size:** 3681 bp

<b>OTI Disclaimer:</b>	<p>Due to the inherent nature of this plasmid, standard methods to replicate additional amounts of DNA in E. coli are highly likely to result in mutations and/or rearrangements. Therefore, OriGene does not guarantee the capability to replicate this plasmid DNA. Additional amounts of DNA can be purchased from OriGene with batch-specific, full-sequence verification at a reduced cost. Please contact our customer care team at <a href="mailto:custsupport@origene.com">custsupport@origene.com</a> or by calling 301.340.3188 option 3 for pricing and delivery.</p> <p>The molecular sequence of this clone aligns with the gene accession number as a point of reference only. However, individual transcript sequences of the same gene can differ through naturally occurring variations (e.g. polymorphisms), each with its own valid existence. This clone is substantially in agreement with the reference, but a complete review of all prevailing variants is recommended prior to use. <a href="#">More info</a></p>
<b>OTI Annotation:</b>	This clone was engineered to express the complete ORF with an expression tag. Expression varies depending on the nature of the gene.
<b>Components:</b>	The ORF clone is ion-exchange column purified and shipped in a 2D barcoded Matrix tube containing 10ug of transfection-ready, dried plasmid DNA (reconstitute with 100 ul of water).
<b>Reconstitution Method:</b>	<ol style="list-style-type: none"> <li>1. Centrifuge at 5,000xg for 5min.</li> <li>2. Carefully open the tube and add 100ul of sterile water to dissolve the DNA.</li> <li>3. Close the tube and incubate for 10 minutes at room temperature.</li> <li>4. Briefly vortex the tube and then do a quick spin (less than 5000xg) to concentrate the liquid at the bottom.</li> <li>5. Store the suspended plasmid at -20°C. The DNA is stable for at least one year from date of shipping when stored at -20°C.</li> </ol>
<b>RefSeq:</b>	<u><a href="#">NM_001134363.1</a>, <a href="#">NP_001127835.1</a></u>
<b>RefSeq ORF:</b>	3684 bp
<b>Locus ID:</b>	282996
<b>UniProt ID:</b>	<u><a href="#">Q5T481</a></u>
<b>Cytogenetics:</b>	10q25.2
<b>MW:</b>	134.2 kDa
<b>Gene Summary:</b>	This gene encodes a protein that binds RNA and regulates splicing. Mutations in this gene have been associated with familial dilated cardiomyopathy. [provided by RefSeq, Apr 2014]

Product images:



Circular map for RC226364



Western blot validation of overexpression lysate (Cat# [LY427396]) using anti-DDK antibody (Cat# [TA50011-100]). Left: Cell lysates from untransfected HEK293T cells; Right: Cell lysates from HEK293T cells transfected with RC226364 using transfection reagent MegaTran 2.0 (Cat# [TT210002]).