

Product datasheet for RC226362

PHKA1 (NM_001122670) Human Tagged ORF Clone

Product data:

Product Type:	Expression Plasmids
Product Name:	PHKA1 (NM_001122670) Human Tagged ORF Clone
Tag:	Myc-DDK
Symbol:	PHKA1
Synonyms:	PHKA
Mammalian Cell Selection:	Neomycin
Vector:	pCMV6-Entry (PS100001)
E. coli Selection:	Kanamycin (25 ug/mL)
ORF Nucleotide Sequence:	>RC226362 ORF sequence Red=Cloning site Blue=ORF Green=Tags(s)

TTTTGTAATACGACTCACTATAGGGCGGCCGGAATTCGTCGACTGGATCCGGTACCGAGGAGATCTGCC
GCCCGATCGCC

ATGAGGAGCCGGAGTAACTCCGGGGTCCGGCTGGACGGCTACGCTCGACTGGTGCACAGACCATCCTGT
GCCATCAGAAATCCAGTGACTGGCTTGCTCCAGCCAGCTATGATCAGAAAGATGCTTGGGTCCGAGATAA
TGTGTACAGCATTTGGCTGTGTGGGGTTGGGCCTGGCCTATCGGAAGAATGCAGACCGGGATGAGGAT
AAGGCAAAGGCCATGAATTGGAGCAGAGTGTAGTGAAGCTGATGAGAGGACTACTGCATGCATGATCA
GACAGGTGGATAAAGTAGAATCCTTCAAATATAGTCAGAGTACTAAGGATAGCCTCCATGCAAAGTACAA
CACAAAACCTGTGCCACTGTAGTGGGTGATGATCAATGGGGACACCTGCAGTTGGATGCTACCTCTGTG
TACCTGCTCTTCTTAGCCCAAATGACTGCCTCAGGACTCCATATCATCCACAGCCTAGATGAAGTCAATT
TCATACAGAACCTTGTGTTTTACATTGAAGCTGCATATAAAAAGTCTGACTTCGGGATATGGGAACGTGG
AGACAAGACCAACCAAGGGATCTCAGAGTTGAATGCCAGTTCAGTTGGAATGGCAAAGGCAGCCCTGGAA
GCATTAGATGAATGGATCTGTTTGGTGTGAAAGGTGGGCCTCAATCAGTTATCCATGTCCTGGCTGATG
AAGTACAGCACTGCCAGTCTATCCTAAATTCACTACTGCCCGTGTCTCAACATCAAAGAGGTTGATGC
TAGTCTACTCTCAGTGGTTTCCCTCCCTGCCTTGCAGTAGAGGATAGCCAGTTGGTGGAGCTCACAAAA
CAGGAAATCATCACAAGCTTCAGGGTCGTTATGGTTGCTGTCGCTTTCTACGAGATGGATATAAAAAGT
CTAAAGAGGATCCCAATCGTCTGACTATGAACCAGCTGAGCTGAAGCTATTTGAAAACATTGAGTGTGA
ATGGCCATTGTTCTGGACATACTTTATTCTTGATGGGGTCTTCAGTGGCAATGCAGAACAGGTTCAAGAA
TATAAAGAGGCTCTTGAAGCAGTCTCATCAAGGGCAAAAATGGAGTCCCCTTCTGCCAGAGCTGTACA
GTGTTCTCCTGACAGGGTCGATGAAGAATATCAGAATCCTCACACTGTGGACCGAGTCCCCATGGGGAA
ATTGCCTCACATGTGGGGTCAGTCTCTATACATTTTAGGAAGCTTGATGGCAGAGGGATTTTAGCCCT
GGAGAAATTGATCCCCTGAATCGCAGGTTTTCTACTGTACCGAAGCCGATGTTGTGGTTCAAGTCTCCA
TTCTAGCTGAAACAGAAGAAATCAAGACATTTTGAAGGACAAGGGAATTTACGTGGAGACCATTGCTGA
GGTATACCCCATCAGAGTACAACCAGCTCGTATTCTCAGCCACATTTATCCAGCCTAGGATGCAACAAT



[View online »](#)

AGAATGAAACTCAGTGGACGACCCTACAGACACATGGGAGTGCTTGGAACTTCAAACTCTATGACATTC
GGAAAATATCTTTACTTTCACTCCACAGTTTATAGACCAGCAACAGTTCTACCTGGCTCTGGACAACA
GATGATAGTGGAAATGCTTAGAACAGACCTCTCCTACCTCTGTAGCCGCTGGCGGATGACAGGCCAGCCC
ACCATCACCTTCCCCATCTCACACAGCATGCTTGATGAAGATGGAACAAGCTTGAATCAAGTATCCTGG
CAGCACTCCGAAAAATGCAAGATGGGTATTTGGTGGGCAAGGGTTCAAACAGGTAAATTGTCAGAGTT
TTTGACAACATCTTGTTCACACACTTGAGCTTCATGGACCCTGGACCTGAGGGTAAGCTGTACAGTGAA
GATTATGATGACAACATGATTACCTGGAATCTGGCAACTGGATGAATGATTATGATTCAACCAGTCATG
CTCGCTGTGGTGAAGTTGCTCGTTATTTAGATCACCTTTTGGCGCACACTGCTCCCCATCCTAACT
AGCCCCTACCTCACAGAAGGGAGGGCTAGATCGGTTCCAAGCTGCTGTGCAAAACAACCTGCGACTTAATG
TCCTTGGTGACCAAGGCCAAGGAACTGCATGTACAGAATGTTACATGTATCTTCTACGAAGTTATTTT
AGGCTTCCCGCCTTCACTCAACTTACTTGATTACCTCATCCCCGACAGGAGAACCAGGTTCCCTCTGT
TCGTGTAGAAATACATCTTCTAGACACAGTCTGGGAGGTGGACTTTAAGCACTGGTTTTACAGTTG
AAGGAGACCTCAAGCTTACAGGAACAAGCTGATACCTCTATATGCTGTATACTATGAAAGGACCTGACT
GGAACACTGAATTGTATAATGAACGGAGTCTACAGTGAGAGAGCTTCTTACCGAGCTGTATGGCAAAGT
GGGAGAAATTCGTCAGTGGGCTGATCCGATACATTTCTGGGATCTTAAGGAAGAAAGTGAAGCACTT
GATGAGGCTGCACAGACCTTCTCTCCACCAGAAACATTTGACAGTAGGACTTCTCCAGAACCTCGAG
AAAAGACTATCTCTGCACCTCTGCCCTATGAGGCGCTCACTCAGCTGATAGATGAAGCCAGTGAAGGGGA
TATGAGCATTTCAATCCTTACACAGGAAATAATGGTATATCTAGCCATGTATATGCGAACCCAGCCTGGC
CTCTTTGCTGAAATGTTTCGACTTCGAATTGGTCTGATCATAACAAGTTATGGCAACAGAAGTGGCCACT
CCCTTCGATGCTCAGCTGAGGAAGCCACAGAGGGCCTGATGAATCTCAGTCCCTTCGGCCATGAAGAATCT
CCTGCATCACATTCTCAGCGCAAGGAGTTTGGAGTGGAAACGAAGCGTTCGTCCCACTGATTCAAATGTC
AGTCTGCTATTTCTATCCACGAGATTGGTCTGTTGGAGCAACCAAAACAGAACGAAGTGGGATCATGC
AGTTAAAAAGTGAGATAAAGCAGTCACCTGGAACCTCTATGACTCCAAGTAGTGGGTCCTTCTAGTGC
ATATGATCAGCAGTCATCTAAAGATAGTCGTCAAGGTCAATGGCAACGCCGAAGAAGGCTGGATGGGGCA
CTGAATAGAGTTCAGTTGGATTTATCAGAAAGTATGGAAGTTTTGCAGAAGTGTACGGACTTTCTG
TTGAAGGGTTTGTCTTCTCTTACCCTAGAGAGATGACTCCAGGTGAGATTAATTTCTCTGTTCA
TGTGGAGTCTGCTGAATCGTGTACCTCAGCCAGAGTACCGTCAGCTGCTGGTTGAAGCCATCCTTGTC
CTCACCATGCTGGCAGATATTGAAATTCATAGCATCGGAAGCATCATTGCTGTGGAAAAAATAGTGCATA
TTGCCAATGACTTGTTCCTTCAAGAACAGAAAACCCTTGGCGCAGATGATACCATGTTGGCAAAGGATCC
CGCATCTGGCATCTGTACTTTCTGTATGACAGTGCACCCAGTGGCAGGTTTGGCACCATGACCTACCTC
TCCAAGGCAGCCGCCACCTACGTGCAGGAGTTCCTGCCCCACAGCATCTGTGCCATGCAA

ACGCGTACGCGGCGCTCGAGCAGAACTCATCTCAGAAGAGGATCTGGCAGCAAATGATATCCTGGATT
ACAAGGATGACGACGATAAGGTTTAA

Protein Sequence: >RC226362 protein sequence
 Red=Cloning site Green=Tags(s)

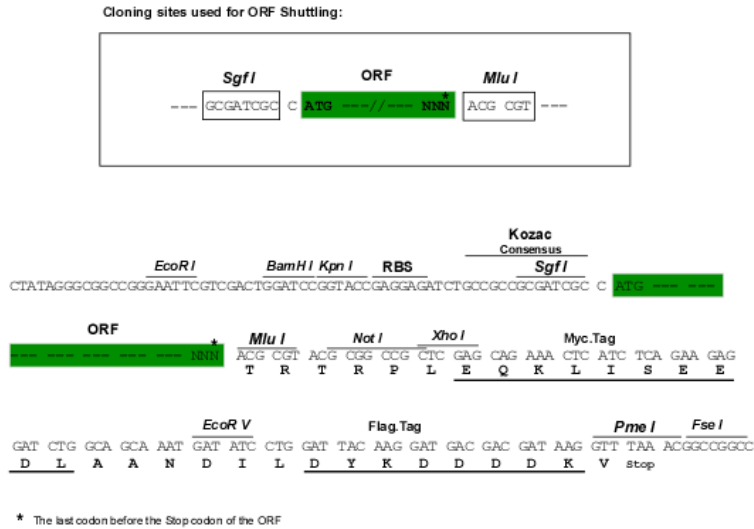
MRSRSNSGVRLDGYARLVQQTILCHQNPVTGLLPASYDQKDAWVRDNVYSILAVWGLGLAYRKNADRDED
 KAKAYELEQSVVKLMRGLLHCMIRQVDKVESFKYSQSTKDSLHAKYNTKTCATVVGDDQWGLQLDATSV
 YLLFLAQMNTASGLHIHSLDEVNFIQNLVFYIEAAYKTADFGIWERGDKTNQGISLNASSVGMKAAL
 ALDELDFGVKGGPQSVIHVLADEVQHCQSILNSLLPRASTKEVDASLLSVVSFPFAVEDSQLVELTK
 QEIIITKLGQRYGCCFLRDGYKTPKEDPNRLYYEPAELKLFENIECEWPLFWTYFILDGVSFSGNAEQVE
 YKEALEAVLIKGNKGVPLPELVYVPPDRVDEEQNPHTVDRVPMGKLPHMWQSLYILGSLMAEGFLAP
 GEIDPLNRRFSTVPKPDVVVQVSI LAETEEIKTILKDKGIYVETIAEVYPIRVQPARILSHIYSSLGCNN
 RMKLSGRPYRHMVGLGTSKLYDIRKTIFFTPQFIDQQQFYALDNKMI VEMLRDLSYLCRWRMTGQP
 TITFPISHMLDEDGTSLNSSILAALRKMQDGYFGGARVQTGKLEFLTTSCTHL SFMDPGEPEGLYSE
 DYDDNYDYLESGNWMNDYDSTSHARC GDEVARYLDHLLAHTAPHPKLAPT SQKGGDRFQA AVQTTCDLM
 SLVTKAKELHVQNVHMYLPTKLFQASRPSFNLLDSPHPRQENQVPSVRVEIHLPRDQSGEVDFKALVLQL
 KETSSLQEADILYMLYTMKGPDWNTELYNERSATVRELLTELYGKVGEIRHWGLIRYISGILRKKVEAL
 DEACTDLLSHQHLTVGLPPEPREKTISAPLPYEAL TQLIDEASEGDMISILTQEIMVYLAMYMTQPG
 LFAEMFRLRIGLI IQVMATELAHSLRCSAEEATEGLMNLSPSAMKNLLHHILSGKEFGVERSVRPTDSNV
 SPAISIEHIGAVGATK TERTGIMQLKSEIKQSPGTSMT PSSGFSF SAYDQSSKDSRGGQWQRRRLDGA
 LNRVPVGFYQKVVKVLQKCHGLSVEGFVLPSSTTREMPGEIKFSVHVESVLRNRPQPEYRQLLVEAILV
 LTMLADIEIHSIGSIIA VEKIVHIANDLFLQE QKTLGADDTMLAKDPASGICTLLYDSAPSGRFGTMYL
 SKAAATYVQEF LPHSICAMQ

TRTRPLEQKLISEEDLAANDILDYKDDDDKV

Chromatograms: https://cdn.origene.com/chromatograms/mk6612_f09.zip

Restriction Sites: SgfI-MluI

Cloning Scheme:

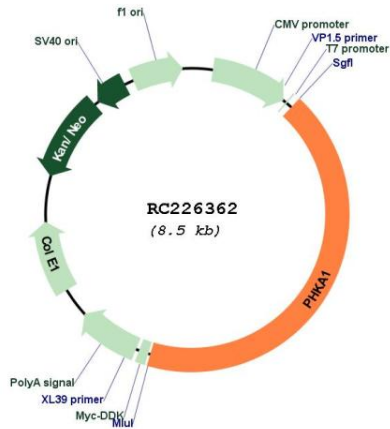


ACCN: NM_001122670

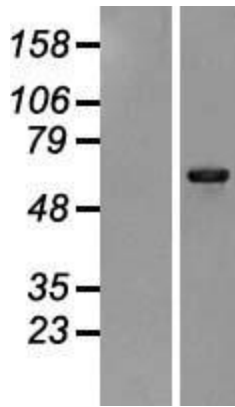
ORF Size: 3630 bp

OTI Disclaimer:	The molecular sequence of this clone aligns with the gene accession number as a point of reference only. However, individual transcript sequences of the same gene can differ through naturally occurring variations (e.g. polymorphisms), each with its own valid existence. This clone is substantially in agreement with the reference, but a complete review of all prevailing variants is recommended prior to use. More info
OTI Annotation:	This clone was engineered to express the complete ORF with an expression tag. Expression varies depending on the nature of the gene.
Components:	The ORF clone is ion-exchange column purified and shipped in a 2D barcoded Matrix tube containing 10ug of transfection-ready, dried plasmid DNA (reconstitute with 100 ul of water).
Reconstitution Method:	<ol style="list-style-type: none">1. Centrifuge at 5,000xg for 5min.2. Carefully open the tube and add 100ul of sterile water to dissolve the DNA.3. Close the tube and incubate for 10 minutes at room temperature.4. Briefly vortex the tube and then do a quick spin (less than 5000xg) to concentrate the liquid at the bottom.5. Store the suspended plasmid at -20°C. The DNA is stable for at least one year from date of shipping when stored at -20°C.
RefSeq:	NM_001122670.1 , NP_001116142.1
RefSeq Size:	6138 bp
RefSeq ORF:	3633 bp
Locus ID:	5255
UniProt ID:	P46020
Cytogenetics:	Xq13.1
Protein Families:	Druggable Genome
Protein Pathways:	Calcium signaling pathway, Insulin signaling pathway
MW:	135.8 kDa
Gene Summary:	Phosphorylase kinase is a polymer of 16 subunits, four each of alpha, beta, gamma and delta. The alpha subunit includes the skeletal muscle and hepatic isoforms, and the skeletal muscle isoform is encoded by this gene. The beta subunit is the same in both the muscle and hepatic isoforms, and encoded by one gene. The gamma subunit also includes the skeletal muscle and hepatic isoforms, which are encoded by two different genes. The delta subunit is a calmodulin and can be encoded by three different genes. The gamma subunits contain the active site of the enzyme, whereas the alpha and beta subunits have regulatory functions controlled by phosphorylation. The delta subunit mediates the dependence of the enzyme on calcium concentration. Mutations in this gene cause glycogen storage disease type 9D, also known as X-linked muscle glycogenosis. Alternatively spliced transcript variants encoding different isoforms have been identified in this gene. A pseudogene has been found on chromosome 1.[provided by RefSeq, Feb 2010]

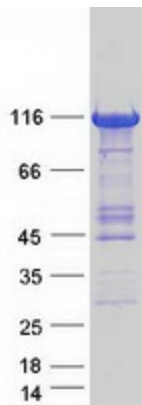
Product images:



Circular map for RC226362



Western blot validation of overexpression lysate (Cat# [LY426544]) using anti-DDK antibody (Cat# [TA50011-100]). Left: Cell lysates from un-transfected HEK293T cells; Right: Cell lysates from HEK293T cells transfected with RC226362 using transfection reagent MegaTran 2.0 (Cat# [TT210002]).



Coomassie blue staining of purified PHKA1 protein (Cat# [TP326362]). The protein was produced from HEK293T cells transfected with PHKA1 cDNA clone (Cat# RC226362) using MegaTran 2.0 (Cat# [TT210002]).