

Product datasheet for RC226360

FNDC3B (NM_001135095) Human Tagged ORF Clone

Product data:

Product Type:	Expression Plasmids
Product Name:	FNDC3B (NM_001135095) Human Tagged ORF Clone
Tag:	Myc-DDK
Symbol:	FNDC3B
Synonyms:	FAD104; PRO4979; YVTM2421
Mammalian Cell Selection:	Neomycin
Vector:	pCMV6-Entry (PS100001)
E. coli Selection:	Kanamycin (25 ug/mL)
ORF Nucleotide Sequence:	>RC226360 representing NM_001135095 Red=Cloning site Blue=ORF Green=Tags(s)

TTTTGTAATACGACTCACTATAGGGCGGCCGGAATTCGTCGACTGGATCCGGTACCGAGGAGATCTGCC
GCC**CGATCGCC**

ATGTACGTACAATGATGATGACCGACCAAATCCCTCTGGAAGTCCACCATGCTGAACGGAGAGGTAG
CCATGATGCCCACTTGGTGAATGGAGATGCAGCTCAGCAGGTTATTCTCGTTCAAGTTAATCCAGGTGA
GACTTTCACAATAAGAGCAGAGGATGGAACACTTCAGTGCATTCAAGGACCTGCTGAAGTCCCATGATG
TCACCAATGGATCCATTCCTCCATTCATGTGCCTCCAGTTATATCTCACAGGTGATTGAAGATAGTA
CTGGAGTCGCGGGTGGTGGTACACCCAGTCTCCTGAGTGTATCCCCAAGCTACCCCTCAGCCAT
GTCTCAAACCATCATCTCCCTCCTATCTGACTCACCATCCACATTTTATTCATAACTCACACAGGCT
TACTACCCACCTGTTACCGACCTGGAGATATGCCGCCTCAGTTTTTTCCCAGCATCATTTCCCACA
CAATATATGGTGAAGAAATTAACATTTTATGGAATGTCAAGCTACATCACCCGAGAAGACCAGTA
CAGCAAGCCTCCGCACAAAAAAGTAAAGACCGCCAGATCGATCGCCAGAACCCTCAACAGCCCTCCT
TCTTCTATCTACAAAAGCAGCTGCACAACAGTATACAATGGTATGGGAAGGGCCATAGTGGTGAAGTG
GCGGAGGCGGCAGCGGTAGTGGTCCCGAATTAAAGAAACAGAGCGACGAGCAAGAAGCAGCCAAAAGTC
GAATGATTCAGACTTGAAGAATATGAGTTGGAAGTAAAGAGGGTGAAGACATTTCTTCGGGAATAGAG
AAACCACAGTTTCTAATATTCAGGCAAGAGCAGTTGTGTGTCCTGGGCTCCCCTGTTGGACTTTCCT
GTGGACCCACAGTGGTCTTCCCTTCCCTACAGTTACGAGGTGGCCTTATCAGACAAAGGACGAGATGG
AAAATACAAGATAATTTACAGTGGAGAAGAATAGAATGTAACCTGAAAGATCTTAGACCAGCAACAGAT
TATCATGTGAGGGTGTATGCCATGTACAATTCGTAAAGGGATCCTGCTCCGAGCCTGTTAGCTTACCA
CCCACAGCTGTGCACCCGAGTGTCTTCCCTTAAAGCTGGCACATAGGAGCAAAAGTTCACTAACCT
GCAGTGAAGGCACCAATTGACAACGGTTCAAAAATCACCAACTACCTTTTAGAGTGGGTGAGGGAAAA
AGAAATAGTGGTTTCAGACAGTGTCTTTCGGGAGCCAGAAGCAAGTTGACAAAGCTTTGTCGG
CAATGGGGTACACATTCAGGCTGGCCGCTCGAAACGACATTGGCACCAGTGGTTATAGCCAAGAGGTGGT
GTGCTACACATTAGGAAATATCCCTCAGATGCCTTCTGCACCAAGGCTGGTTCGAGCTGGCATCATATGG



[View online »](#)

GTCACGTTGCAGTGGAGTAAAGCCAGAAGGCTGTTACCCGAGGAAGTGATCACCTACACCTTGAAATTC
AGGAGGATGAAAATGATAACCTTTCCACCCAAAATACACTGGAGAGGATTTAACCTGTACTGTGAAAAA
TCTCAAAAGAAGCACACAGTATAAATTCAGGCTGACTGCTTCTAATACGGAAGGAAAAAGCTGTCCAAGC
GAAGTTCTTGTGTACGACGAGTCTGACAGGCTGGACCTCTACCAGACCGTTGTCAAAGGCCAG
TTACATCTCATGGCTTGTAGTGTCAAATGGGATCCCCCTAAGGACAATGGTGGTTCAGAAATCCTCAAGTA
CTTGCTAGAGATTACTGATGAAAATCTGAAGCGAATCAGTGGGAAGTGGCTACAGTGGGTCGGCTACC
GAATACACCTTCACCCACTTGAAACCAGGCACCTTGTACAAAACCCGAGCATGTGCATCAGTACCGGCG
GACACAGCCAGTGTCTGAAAGTCTCCCTGTTCCGACACTAAGCATTGCACCAGGTCAATGTCGACCACC
GAGGGTTTTGGGTAGACCAAAGCACAAAGAAGTCCACTTAGAGTGGGATGTTCTGCATCGGAAAGTGGC
TGTGAGGTCTCAGAGTACAGCGTGGAGATGACGGAGCCGGAAGACGTAGCCTCGGAAGTGTACCATGGCC
CAGAGCTGGAGTGCACCGTCGGCAACCTGCTTCTGGAACCGTGTATCGTTCCGGGTGAGGGCTGTGAA
TGATGGAGGTATGGTCCCTATTCTGATGTCTCAGAAATTACCACTGCTGCAGGGCTCTGGACAATGC
AAAGCACCTTGTATTTCTGTACACCTGATGGATGTGTCTTAGTGGTGGGAGAGTCTGATAGTTCTG
GTGCTGACATCTCAGAGTACAGGTTGGAATGGGAGAAGATGAAGAATCCTTAGAACTCATTATCATGG
GACAGACACCCGTTTTGAAATAAGAGACCTGTTGCCTGCTGCACAGTATTGCTGTAGACTACAGGCCTTC
AATCAAGCAGGGGACGGCCGTACAGTGAACCTGTCTTTGGCAGACGCCAGCGTCTGCCCTGACCCCG
TCTCCACTCTCTGTGCCTGGAGGAGGAGCCCTTGATGCCTACCTGATTACCTTCTGCGTGCCTTGT
ACTGAACTGGGAAGACCGTGAATAACGGATCTGAAATCCTTGCTTACACCATTGATCTAGGAGACACT
AGCATTACCGTGGGAACACCACCATGCATGTTATGAAAGATCTCCTCCAGAAACCACCTACCGGATCA
GAATTCAGGCTATAAATGAAATTGGAGCTGGACATTTAGTCAGTTCATTAAGCAAAAACCTCGGCCATT
ACCACCCTTGCCCTCCTAGGCTAGAATGTGCTGCTGCTGGTCCCTCAGAGCCTGAAGCTAAAATGGGGAGAC
AGTAACTCCAAGACACATGCGGCTGAGGACATTGTGTACACACTACAGCTGGAGGACAGAAACAAGAGGT
TTATTTCAATCTACAGAGGACCCAGCCACACCTACAAGTCCAGAGACTGACGGAATTCACATGCTACTC
CTTCAGGATCCAGGCAGCAAGCGAGGCTGGAGAAGGGCCCTTCTCAGAAACCTATACCTTCAGCACAAAC
AAAAGTGTCCCCCACCATCAAAGCACCTCGAGTAACACAGTTAGAAGGAAATTCATGTGAAATTTTAT
GGGAGACGGTACCATCAATGAAAGGTGACCCTGTTAACTACATTCTGCAGGTATTGGTTGGAAGAGAATC
TGAGTACAAACAGGTGTACAAGGAGAAGAAGCCACATTCCAAATCTCAGGCCTCCAGACCAACACAGAC
TACAGGTTCCGCGTATGTGCGTGTGTCGCTGTTAGACACCTCTCAGGAGCTAAGCGGAGCCTTCAGCC
CCTCTGCGGCTTTTGTATTACAACGAAGTGAAGTGTGCTTACAGGGGACATGGGGAGCTTAGATGATCC
CAAAATGAAGAGCATGATGCCTACTGATGAACAGTTTGCAGCCATCATTGTGCTTGGCTTTCACACTTG
TCCATTTATTTGCCTTTATATTACAGTACTTCTAATGAAG

ACGCGTACGCGGCCGCTCGAGCAGAACTCATCTCAGAAGAGGATCTGGCAGCAAATGATATCCTGGATT
ACAAGGATGACGACGATAAGGTTTAA

Protein Sequence: >RC226360 representing NM_001135095
 Red=Cloning site Green=Tags(s)

```

MYVTMMMTDQIPELEPLLNGEVAMPHLVNGDAAQQVILVQVNPGETFTIRAEDGTLQCIQGP AEVPM
SPNGSIPPIHVPPGYISQVIEDSTGVRVVVTPQSPECYPPSYPSAMSPTHLLPPYLTHHPHF IHN
SHTA YYPVTPGDMPPQFFPQHHLPHTIYGEQEIIIPFYGMSSYITREDQYSKPPHKKLDRQIDRQ
NRLNSP SSIYKSSCTTVYNGYKGHSGGSGGGSGSGPGIKKTERRARSSPKSNDSDLQEYELEVKR
VQDILSGIE KPQVSNIQARAVVLSWAPPVGLSCGPHSGLSFPYSYEVALSDKGRDGKYKIIYS
GEELECNLKDLPATD YHVRVYAMYNSVKGSCSEPVSFTHSCAPECFPPKLAHRKSSSLTLQW
KAPIDNGSKITNYLLEWDEGRNSGFRQCFFGSQKHCKLTKLCPAMGYTFRLAARNDIGTSGYSQ
EVVCYTLGNIPQMPSAPRLVRAGITW VTLQWSKPEGCSPEEVITYTLEIQEDENDNLFHPKY
TGEDLTCTVKNLKRSTQYKFRLTASNTEGKSCPS EVLVCTTSPDRPGPPTRPLVKGPVTS
HGF SVKWDPPKDNGGSEILKYLLEITDGNSEANQWEVAYS GSAT EYTFTHLKPRTLKLRAC
CISTGGHSQCSESLPVRTLSIAPGQCRPPRVLGRPKHKEVHLEWDPASESG CEVSEYSVEM
TEPEDVASEVYHGPLECTVGNLLPGTVYRFRVRALNDGGYGPYSDVSEITTAAGPPGQC
KAPCISCTPDGCVLVGWESPDSSGADISEYRLEWGEDEESLELIYHGTDTRFEIRDLLPAAQ
YCCRLQAF NQAGAGPYSELVLWQTPASADPVSTLCVLEEEPLDAYPDSPSACLVLNWEPE
PCNNGSEILAYTIDLGDT SITVGNNTMHVMKDLLPETTYRIRIQAINIAGAGPFSQFIKAK
TRPLPPLPRLECAAAGPQSLKWKWD SNSKTHAAEDIVYTLQLEDNRKRFISIYRGPSHTYK
VQRLTEFTCYSFRIQAASEAGEGPFSEYTFSTT KSVPTTIKAPRVTLQEGNSCEILWETV
PSMKGDPVNYILQVLVGRESEYKQVYKGEAATFQISGLQTNTD YRFRVACRRCLDTSQEL
SGAFSPSAFVLQRSEVMLTGMGSLDDPKMKSMMP TDEQFAAIIVLGFATLSILFAFILQY
FLMK
  
```

TRTRPLEQKLISEEDLAANDILDYKDDDDKV

Chromatograms: https://cdn.origene.com/chromatograms/mg3664_c10.zip

Restriction Sites: SgfI-MluI

Cloning Scheme:

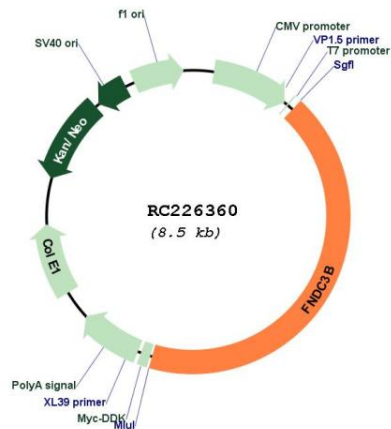


ACCN: NM_001135095

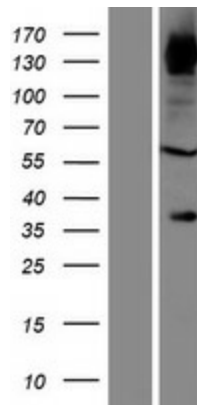
ORF Size: 3612 bp

OTI Disclaimer:	The molecular sequence of this clone aligns with the gene accession number as a point of reference only. However, individual transcript sequences of the same gene can differ through naturally occurring variations (e.g. polymorphisms), each with its own valid existence. This clone is substantially in agreement with the reference, but a complete review of all prevailing variants is recommended prior to use. More info
OTI Annotation:	This clone was engineered to express the complete ORF with an expression tag. Expression varies depending on the nature of the gene.
Components:	The ORF clone is ion-exchange column purified and shipped in a 2D barcoded Matrix tube containing 10ug of transfection-ready, dried plasmid DNA (reconstitute with 100 ul of water).
Reconstitution Method:	<ol style="list-style-type: none">1. Centrifuge at 5,000xg for 5min.2. Carefully open the tube and add 100ul of sterile water to dissolve the DNA.3. Close the tube and incubate for 10 minutes at room temperature.4. Briefly vortex the tube and then do a quick spin (less than 5000xg) to concentrate the liquid at the bottom.5. Store the suspended plasmid at -20°C. The DNA is stable for at least one year from date of shipping when stored at -20°C.
RefSeq:	NM_001135095.1 , NP_001128567.1
RefSeq ORF:	3615 bp
Locus ID:	64778
UniProt ID:	Q53EP0
Cytogenetics:	3q26.31
Protein Families:	Druggable Genome, Transmembrane
MW:	132.7 kDa
Gene Summary:	May be a positive regulator of adipogenesis.[UniProtKB/Swiss-Prot Function]

Product images:



Circular map for RC226360



Western blot validation of overexpression lysate (Cat# [LY427549]) using anti-DDK antibody (Cat# [TA50011-100]). Left: Cell lysates from untransfected HEK293T cells; Right: Cell lysates from HEK293T cells transfected with RC226360 using transfection reagent MegaTran 2.0 (Cat# [TT210002]).