

Product datasheet for RC226356

Centaurin gamma 1 (AGAP2) (NM_001122772) Human Tagged ORF Clone

Product data:

| | |
|---------------------------|--|
| Product Type: | Expression Plasmids |
| Product Name: | Centaurin gamma 1 (AGAP2) (NM_001122772) Human Tagged ORF Clone |
| Tag: | Myc-DDK |
| Symbol: | Centaurin gamma 1 |
| Synonyms: | CENTG1; GGAP2; PIKE |
| Mammalian Cell Selection: | Neomycin |
| Vector: | pCMV6-Entry (PS100001) |
| E. coli Selection: | Kanamycin (25 ug/mL) |
| ORF Nucleotide Sequence: | >RC226356 representing NM_001122772 Red=Cloning site Blue=ORF Green=Tags(s) |

TTTTGTAATACGACTCACTATAGGGCGGCCGGAATTCGTCGACTGGATCCGGTACCGAGGAGATCTGCC
GCC**CGATCGCC**

ATGAGCCGGGGCGGGCGCGCTTCAGCGCCGGACAACGACCTACCTCATCTCGCTGACCCTGGTTAAGC
TCGAGTCGGTGCCTCCGCCGCCCTTCTCCGTCTGCGGCCGGCGCCGCCCGGTGCCAGAGGCTC
CGAGACTGGGGATCCTGGCAGCCCCGAGGCGCGGAGGAGCCGGGCAAGAAGCGGCACGAACGTCTTTC
CACCGGCAGGATGCGCTGTGGATCAGCACGAGCAGCGCGGGCACCGGGGGCGGGAGCCCCAGCCCTGT
CCCCGGCTCCGGCCAGTCCGGCCGCCAGTCTCCCCCGTCCCCGCGCGCCTCTCCCTCTGGGCGGT
CCCTCCGGGACCCCCGCTCTCCGGGGACTGAGCCCCGACCCAAAGCCTGGGGGCGCCCCACCTCCTCC
CGGCGCCCCCTGCTCAGCAGCCCCGAGCTGGGGCGGCCGAGCCGAAGGCCGGGCGGGCGGCATCC
CTGGCTCATCCTCTCCGACCCCTGGCACCCGAGCCGGAGGCTCAAGGTGGCGCCTCCTCCGCCGCTCC
CAAGCCTTGCAAGACCGTGACCACGAGTGGAGCCAAAGCCGGCGGGGCAAGGGCGCGGGTAGCCGCTG
TCATGGCCGAAAGCGAGGGCAAGCCAGGGTCAAGGGGTCAAAGAGCAGCGCCGGGACTGGAGCTTCGG
TCTTGCCCGCCACC GCCCGCCGCCCGGGGAGGGGGCTCTACAGCTTCGACCTCTGGTGGGGTCCG
GGCTGGGGCTGGAGCCCAGGGAAAGTTGTCCCTCGGAAAGCAAGAGTAAGACCTTGACAACAGTGAC
TTGCATCCGGGACCGCTGCCGGCTCCTCCTCCGCTAACCTCCCAACTCCGAGTCCAGCCACTG
CTGTACCGCTGCTTCCGCGCAGCCCCCGGGCCTGCACCTCAATCACTCTGGAGCCTCCAGCTCCGGG
GCTGAAACGGGGCCGGGAGGGGGCCGAGCATCCACTCGTGACCGAAGATGCTCAAGTTTATCAGCGGC
ATCTTACCAAGAGCACAGGAGGGCCTCCTGGCTCCGGGCCCTTCCCGACCCCCAGCCTGTCTTCTG
GCAGCGGGTCCAGGGAGCTGCTGGGCGCCGAGCTCCGCGCTTCCCTAAGGCTGTGATCAATAGCCAGGA
ATGGACTTTGAGCCGCTCCATTCTGAAGTGGCTGGTGTGCTGGGCGATGCCAGGAGTGGGAAGTCA
TCGCTCATCCACCGATTCTGACTGGCTCATACAGGTGCTGGAGAAGACAGAGAGTGAGCAGTACAAGA
AAGAAATGTTGGTGGATGGACAGACACATCTGGTCTAATCCGAGAGGAAGCTGGGGCACCTGATGCCAA
GTTCTCAGGCTGGCAGATGCTGTGATCTCGTCTCAGCCTGGAGGATGAGAACAGTTTCCAGGCTGTG



[View online >](#)

AGCCGTCTCCATGGGCAGCTGAGTTCCTTCGCGGGGAGGGACGAGGAGGCCTGGCCTTGGCACTGGTGG
GGACACAAGACAGGATCAGTGCTTCTCCCTCGGGTGGTGGGAGATGCTCGTGCCAGAGCTCTGTGCGC
GGACATGAAACGCTGCAGCTACTATGAGACTTGTGCAACCTATGGGCTCAATGTGGATCGGGTCTTCCAG
GAGGTGGCCAGAAAGGTGGTACCTTGCAGCAAGCAGCAACAGCTTCTGGCTGCCTGCAAGTCCCTGCCCA
GCTCCCAAGCCACTCAGCTGCATCCACTCCGGTAGCTGGCCAGGCTAGTAACGGGGGCCACACTAGCGA
CTACTCTTCTCCCTCCCGTCCACCGAATGTTGGTACCAGGGAGCTCCGAGCCGAGGCGAGCTGCAGTG
GCTGGATTGAGCACCCAGGGTCCCTGCACCCGGCAGCCAAGCGCAGGACCAGCCTTTTTGCGAATCGTC
GGGGTAGTGACTCCGAGAAACGAAGCTTGGATAGTCGGGGAGAGACAACAGGGAGTGGGCGAGCCATCCC
CATCAAACAGAGCTTCTACTAAAACGAAGTGGCAATTCCTTGAACAAAGAATGGAAGAAGAAATATGTA
ACCCTGTCCAGTAATGGCTTTCTACTCTACCACCCAGTATTAACGATTACATCCACAGTACCCACGGCA
AGGAGATGGACTTGTGCGAACAACAGTCAAAGTCCCGGGCAAGCGGCCCCCGAGGGCCATCTCTGCCTT
TGGCCCTCAGCCAGCATTAAACGGGCTCGTCAAGGACATGAGCACTGTCCAGATGGGTGAAGGCCTGGAA
GCCACTACTCCCATGCCAAGCCCTAGCCCCAGCCCCAGTCCCTGCAGCCACCACCAGATCAGACATCCA
AACACCTGCTGAAGCCAGACCGGAATTTGGCCGAGCCCTCAGCACGGACTGTACCCCATCTGGAGACCT
GAGCCCCCTGAGTCGGGAACCCCTCCTTCTCCATGGTGAAGAAGCAGAGGAGGAAAAAATTGACAACA
CCATCAAAGACTGAAGGCTCGGCTGGGCAGGCTGAAGCCAAGCGCAAAATGTGAAAATAAAATCCTTTG
GTAGTTTAAGAAATATTTATAAAGCAGAGGAAAACTTTGAGTTTCTGATCGTGTCCAGCACGGGTGAGAC
GTGGCACTTTGAGGCAGCCAGTTTTGAGGAGCGGGATGCCTGGGTCCAGGCCATCGAGAGTCAAGTCCCTA
GCCAGTCTGCAATGCTGTGAGAGCAGCAAGGTCAAGTGCACACAGACAGCCAAAGCGAGGCCGTGGCCA
TCCAGGCGATCCGGAACGCCAAGGGGAATTCATCTGCGTGGACTGCGGGGCCCCCAACCCACGTGGGC
CAGCTTGAACCTGGGCGCCCTCATCTGCATCGAGTGTCTGGCATCCACCGCAACCTGGGCACACACCTG
TCCCGCTTCGCTCGCTGGACTTGGACGACTGGCCACGGGAGCTGACCTGGTGTGACGGCTATTGGCA
ACGACACGGCCAACCGCTGTGGGAAAGCGACACGCGAGGCCGTGCCAAGCCCTCGCGGGACTTTCGCG
GGAGGAGCGGAGTCTGGATTTCGCGCCAAGTACGAGCAGCTACTGTTCTTGGCGCCGCTGAGCACCTCG
GAGGAGCCGCTGGGCCGCCAGCTGTGGCCGCCGTGCAGGCCAGGACGTGGCTACCGTTCTCTGCTTT
TGGCCATGCGCGACACGGGCCGCTCGACACCAGCGTAGAGGACCCACAGCTGCGCTCCCCACTCCACCT
GGCGGCCGAGCTCGCCCAGTCTCATCACGCAACTGCTGCTGTGGTACGGCGCGGACGTGGCGGCCGT
GACGCCAGGGCCGACGGCGCTGTTCTACGCCGCCAGGCTGGAAGCCAGCTGTGCGCCGACATCCTTC
TCCAGCACGGCTGCCCGGTGAGGGCGGCAGCGGCCACCACGCCAGCGGCCACCACGCCAGCAT
CACCGCCAGCCAGCCCCGCCCGGAGCAGCGCCGTAGCGTGGGCCGCGCCAGCCCCGGTTGCG
CTGGTA

ACGCGTACGCGGCCGCTCGAGCAGAACTCATCTCAGAAGAGGATCTGGCAGCAAATGATATCCTGGATT
ACAAGGATGACGACGATAAGGTTTAA

Protein Sequence: >RC226356 representing NM_001122772
 Red=Cloning site Green=Tags(s)

```
MSRGAGALQRRTTTYLISLTLVKLESVPPPPSPSAAAAGAARGSETGDPGSPRGAEPEGKRRHERLF
HRQDALWISTSSAGTGAEPALSPAPASPARPVSPAPGRRLSLWAVPPGPPLSGGLSPDPKPGGAPTSS
RRPLLSSPSWGGPEPEGRAGGGIPGSSSPHPGTGSRRLKVAPPPAPKPKCTVTTSGAKAGGGKAGSRL
SWPESEKPRVKGSKSSAGTASVSAAAATAAAAGGGGASTASTSGVVGAGAGARGKLSRKGKSKTLDNSD
LHPGPPAGSPPPLTLPPTPSPATAVTAASAQPPGPAPPITLPPAPGLKRGREGGRASTRDRKMLKFISG
IFTKSTGPPGSGPLPGPPSLSSGSGSRELLGAELRASPKAVINSQEWTLRSIPELRLGVLGDARSGKS
SLIHRFLTGSYQVLEKTESEQYKKEMLVDGQTHLVLIREEAGAPDAKFSGWADAVIFVFSLEDENSFQAV
SRLHGQLSSLRGEGRGLALALVGTQDRISASSPRVVDARARALCADMKRCSYETCATYGLNVDRVFQ
EVAQKVTLRKQQQLLAACKSLPSSPSHSAASTPVAGQASNGGHTSDYSSSLPSSPNVGHRELRAEAAAV
AGLSTPGSLHRAAKRRTSLFANRRGSDSEKRLDSRGETTSGRAIPIKQSFLLKRSGNSLNKEWKKKYV
TLLSSNGFLLYHPSINDYIHSTHGKEMDLLRTTVKVPGRPPRAISAFGPSASINGLVKDMSTVQMGEGL
ATTPMPSPSPSSSLQPPPDQTSKHLKPDRLARALSTDCTPSGDLSPLSREPPSPMVKKQRRKKLTT
PSKTEGSAGQAEAKRKMWKLKSFGLRNIYKAENFEFLIVSSTGQTHWFEAASFEEERDAWVQAIESQIL
ASLQCCESKVKLRTDSQSEAVAIQAIRNAKGNICVDCGAPNPTWASLNLGALICIECSGTHRNLGTHL
SRVRSLLDDWPRELTLVLTAI GNDTANRVWESDTRGRAKPSRDSREERESWIRAKYEQLLFLAPLSTS
EEPLGRQLWAAVQAQDVATVLLLLAHARHGPLDTSVEDPQLRSPHLAAELAHVVITQLLLWYGADVAAR
DAQGRTALFYARQAGSQLCADILLQHGCPEGGSAATTPSAATTPSITATPSPRRRSSAASVGRADAPVA
LV
```

TRTRPLEQKLISEEDLAANDILDYKDDDDKLV

Chromatograms: https://cdn.origene.com/chromatograms/mk8031_e09.zip

Restriction Sites: SgfI-MluI

Cloning Scheme:

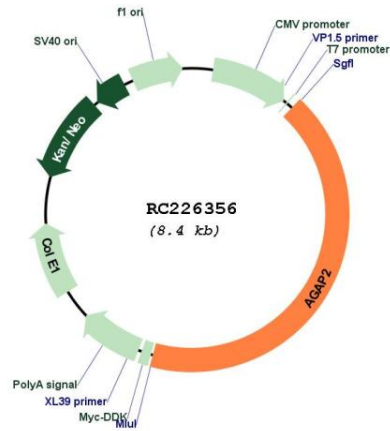


ACCN: NM_001122772

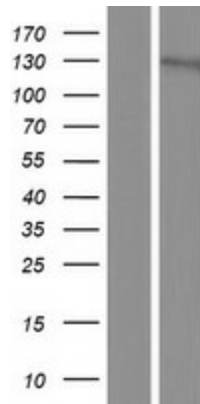
ORF Size: 3576 bp

| | |
|-------------------------------|---|
| OTI Disclaimer: | The molecular sequence of this clone aligns with the gene accession number as a point of reference only. However, individual transcript sequences of the same gene can differ through naturally occurring variations (e.g. polymorphisms), each with its own valid existence. This clone is substantially in agreement with the reference, but a complete review of all prevailing variants is recommended prior to use. More info |
| OTI Annotation: | This clone was engineered to express the complete ORF with an expression tag. Expression varies depending on the nature of the gene. |
| Components: | The ORF clone is ion-exchange column purified and shipped in a 2D barcoded Matrix tube containing 10ug of transfection-ready, dried plasmid DNA (reconstitute with 100 ul of water). |
| Reconstitution Method: | <ol style="list-style-type: none">1. Centrifuge at 5,000xg for 5min.2. Carefully open the tube and add 100ul of sterile water to dissolve the DNA.3. Close the tube and incubate for 10 minutes at room temperature.4. Briefly vortex the tube and then do a quick spin (less than 5000xg) to concentrate the liquid at the bottom.5. Store the suspended plasmid at -20°C. The DNA is stable for at least one year from date of shipping when stored at -20°C. |
| RefSeq: | NM_001122772.2 , NP_001116244.1 |
| RefSeq ORF: | 3579 bp |
| Locus ID: | 116986 |
| UniProt ID: | Q99490 |
| Cytogenetics: | 12q14.1 |
| Protein Pathways: | Endocytosis |
| MW: | 124.4 kDa |
| Gene Summary: | The protein encoded by this gene belongs to the centaurin gamma-like family. It mediates anti-apoptotic effects of nerve growth factor by activating nuclear phosphoinositide 3-kinase. It is overexpressed in cancer cells, and promotes cancer cell invasion. Alternatively spliced transcript variants encoding different isoforms have been described for this gene. [provided by RefSeq, Aug 2011] |

Product images:



Circular map for RC226356



Western blot validation of overexpression lysate (Cat# [LY426561]) using anti-DDK antibody (Cat# [TA50011-100]). Left: Cell lysates from untransfected HEK293T cells; Right: Cell lysates from HEK293T cells transfected with RC226356 using transfection reagent MegaTran 2.0 (Cat# [TT210002]).