

Product datasheet for RC226352

ARHGEF14 (MCF2L) (NM_001112732) Human Tagged ORF Clone

Product data:

Product Type:	Expression Plasmids
Product Name:	ARHGEF14 (MCF2L) (NM_001112732) Human Tagged ORF Clone
Tag:	Myc-DDK
Symbol:	ARHGEF14
Synonyms:	ARHGEF14; DBS; OST
Mammalian Cell Selection:	Neomycin
Vector:	pCMV6-Entry (PS100001)
E. coli Selection:	Kanamycin (25 ug/mL)
ORF Nucleotide Sequence:	>RC226352 representing NM_001112732 Red=Cloning site Blue=ORF Green=Tags(s)

TTTTGTAATACGACTCACTATAGGGCGGCCGGAATTCGTCGACTGGATCCGGTACCGAGGAGATCTGCC
GCC**CGATCGCC**

ATGGCGAGGGTGGAGAGCCCCGTGCCTGCAGCGCGCTTCCCTCACTGGGTCTGCGTCTTGGGCAGG
CGATGCCCTGCGGGGAGGGGCTGGTCCATCCCCGGCCAGCCACGGACCCACGCATGGACCCAGCGACCC
ACGGACCTGCTTACCTGGGCGCGCGGGTGGCATGCGGCCACCGAAGGGGCGCGTGGGCTGCTGC
GGCCTCTGCAGCTTCTACACCTGCCACGGGGCGCGGAGATGAAATCATGCACCAGGACATCGTCCCGC
TCTGTGCTGCCGACATCCAGGACCAGCTAAAGAAGCGCTTTGCTTACCTGTCGGTGGGCGGGGAGGA
CGAAGCCCGTTATCACCTTCCCTGACTACCCGGCTTCAGCGAGATCCGGACAAGGAGTTCAGAAAT
GTCATGACCTACCTACCCAGCATCCCCAGCCTGCAGGACGCTGGCATCGGATTCATCCTGGTGATAGACC
GGCGACGGGACAAATGGACCTCCGTGAAGGCGTCCGTCCTGCGCATCGCAGCATCTTCCCGGAAACCT
GCAGCTCGTCTCGTCTCGCCGACGGGTTTTTCCAAAGGACTCTCTCCGACATCGCTTTCAAATTC
AATAGAGATGACTTTAAGATGAAGGTGCCGGTCATAATGCTGAGCTCCGTACCAGACTTACACGGTTACA
TCGATAAGTCGCAGCTGACCGAGGACCTGGGTGGGACCTGGACTACTGCCACTCCCGGTGGCTGTGCCA
GGCACGGCCATCGAAAGTTTCGCCCTCATGGTGAAGCAGACGGCTCAGATGCTGCAGTCTTCCGGGACC
GAGCTGGCTGAAACAGAGCTGCCAATGACGTCCAGTCGACAAGCTCAGTGTGTGCGCACACAGAGA
AGAAGGACAAGGCGAAGGAGGATTTGAGGCTGGCACTGAAAGAGGGGCACAGTGTCTGGAGAGCCTCAG
GGAGCTGCAGGCTGAGGGCTCAGAGCCAGTGTGAACCAGGACCAGCTTGACAACCAGGCCACCGTGCAG
AGGCTCTGGCCAGCTGAACGAAACCGAGGCTGCCTTCGATGAGTTCTGGGCAAAGCATCAGCAGAAAC
TGGAGCAGTGTCTGCAGCTCCGGCACTTTGAGCAGGGCTTCCGGGAGGTCAAAGCCATCTTGGACGCAGC
GTCCCAGAAGATAGCAACCTTACAGACATCGGCAACAGCCTGGCGCATGTGGAGACCTGCTGAGGGAC
CTGGCCAGCTTCGAGGAGAAATCAGGCGTGGCCGTGGAGAGGGCCCGGGCCCTGTCTCTGGACGGCGAGC
AGCTCATTGGGAACAAGCACTACGCGGTAGACTCCATCCGCCAAAGTGCAGGAGCTCCGGCACCTCTG
TGACCAGTTCTCTCGGAGATCGCAAGGAGGAGGGGCTGCTCAGCAAGTCCCTGGAGCTGCACCGCCG



[View online >](#)

CTGGAGACGTCCATGAAGTGGTGTGATGAAGGGATTTACCTGCTGGCCTCACAACCTGTGGACAAGTGCC
AGTCCCAGGACGGCGCGGAGGCTGCCCTCCAGGAAATCGAGAAGTTTTGGAGACCGGTGCGAAAAATAA
GATCCAGGAGCTCAACGCGATTTACAAGGAATACGAATCCATCCTCAACCAAGATCTCATGGAGCACGTG
CGAAAGGTCTTCCAGAAGCAGGCAAGCATGGAGGAGGTGTTCCACCGCAGGCAGGCCAGCCTGAAGAAGC
TGGCGGCCAGGCAGACGCGGCCCGTGCAGCCGGTGGCCCCAGACCCGAGGCACTGGCAAAGTCGCCCTG
CCCCTCCCAGGCATTGCGCGAGGCTCTGAGAACTCCAGCTCCGAGGGCGGTGCGCTCCGGAGAGGGCCC
TACCGGAGGGCCAAGAGTGAGATGAGTGAGAGCCGCGAGGGCCGCGGCTCAGCGGGGAGGAGGAGGAAA
GCCTGGCCATCCTGCGCAGGCACGTGATGAGCGAGCTCCTGGACACAGAACGCGGCCTACGTGGAGGAGCT
GCTGTGCGTCTGGAGGGCTACGCCGCGGAGATGGATAAACCCTGATGGCTCACCTCCTGTCAACAGGC
CTTCACAACAAGAAGGATGTTTTGTTTGGAAACATGGAGGAAATCTATCACTTCCACAACAGGATATTCC
TCAGGGAGCTGGAAAACACTACTGACTGCCAGAACTGGTTGGAAGATGCTTTCTGGAGAGGATGGAAGA
TTTCCAGATCTATGAGAAGTACTGTGAGAAACAAGCCCCGCTCTGAGAGCCTGTGGAGACAGTGTCCGAC
TGCCCCGTTTTCCAGGAATGCCAGAGAAAGCTGGACCACAAGCTGAGCCTGGACTCCTACCTGCTGAAGC
CAGTGCAGAGGATCACCAGTACCAGCTGCTGCTCAAGGAAATGCTGAAATACAGCAGGAACTGCGAGGG
GGCTGAGGACCTGCAGGAGGCGCTGAGTCCATCCTGGGCATCCTGAAGGCCGTGAACGACTCCATGCAC
CTCATCGTATACCCGGCTATGACGGGAATCTCGGCGACCTGGGCAAGCTGCTGATGCAGGGCTCGTTCA
GCGTCTGGACCGACCACAAGAGGGGCCACACCAAGGTGAAGGAGCTGGCCAGGTTCAAGCCCATGCAGCG
GCACCTGTTCTGACAGGAAAGGAGTGTCTTCTGCAAGAAGAGGGAGGAGAATGGGGAGGGGTATGAG
AAAGCTCCCTCCTACAGCTACAAGCAGTCTTAAACATGGCTGCCGTTGGCATTACGGAGAACGTGAAGG
GAGATGCTAAGAAGTTCGAGATCTGGTACAACGCGCGGAGGAGGTCTACATCGTCCAGGCGCAACTCC
TGAGATTAAGCCGCGTGGGTGAATGAAATTCGAAAGTCTGACCAGCCAGCTGCAGGCTTGTAGAGAA
GCCAGCCAGCACCGGGCGCTGGAGCAGTCACAGAGCCTGCCCTGCCGGCCCCGACCAGCACCAGTCCCT
CAAGAGGAAACTCAAGGAACATCAAGAAGCTGGAAGAAAGGAAAACAGACCCCTAAGCCTGGAGGGATA
CGTCAGCTCAGCGCCACTGACAAAAGCCCCGAAAAGGGCAAAGGTTGGAGCAAAACGTCCCACTACTG
GAGGCACCTGAGGACGACGCGGGGCTGGTCAAGTGCAAGGAGCAGATTAACTCGTCCGACGACAGGAGG
ACGGCGGGTTGGGCCCAAGAAGCTGGTTCCAGGTAAATACACGGTCTGGCGGACCACGAGAAGGGAGG
CCCCGATGCGCTGCGCGTGAAGGAGCGGGGACGTGGTGGAGCTGGTGCAGGAGGGGACGAGGGCCTCTGG
TACGTGAGGACCCGACCACTGGCAAGGAGGGCTGGTGGCGCCAGCAGCCTGTCCGTCCGGCTCGGCC
CGTCCGGCTCGGCCAGTGCCTGAGCAGCTCAGAGTCGAGCCGGGGTCGGCCGTGCTGAGCAACTCGTC
CAGCTGCAGCGAGGGCGGCCAGGCCCTTCTCCGACCTGCAGGGG

ACGCGTACGCGGCGGCTCGAGCAGAACTCATCTCAGAAGAGGATCTGGCAGCAAATGATATCCTGGATT
ACAAGGATGACGACGATAAGGTTTAA

Protein Sequence: >RC226352 representing NM_001112732
 Red=Cloning site Green=Tags(s)

MARVESPVPAARASLTGSCVVLGQAMPLRGGAGPSPASHGPTHGSPDPTCLPGRGAGMRPHGRGALGCC
 GLCSFYTCHGAAGDEIMHQDIVPLCAADIQDQLKKRFAYLSGGRGQDGSVITFPDYPAFSEIPDKEFQN
 VMTYLTSPSLQDAGIGFILVIDRRRDKWTSVKASVLRIAASFANLQLVLRPTGFFQRTLSDIAFKF
 NRDDFKMKVPVIMLSSVPLDHYIDKSQLTEDLGGTLDYCHSRWLCQRTAIESFALMVKQTAQMLQSFGT
 ELAETELPNDVQSTSSVLC AHTKEDKAKEDLRLALKEGHSVLESLRELQAE GSEPSVNQDQLDNQATVQ
 RLLAQLNETEAAFDEFWAKHQKLEQCLQLRHFEQGFREVKA ILDAASQKIATFTDIGNSLAHVEHLLRD
 LASFEESGVAVERARALSLDGEQLIGNKHYAVDSIRPKCQELRHLCDQFSAEIARRRGLLSKSLELHRR
 LETSMKWCDEGIYLLASQPVDKCSQDGAEEALQEIEKFLETGAENKIQELNAIYKEYESILNQDLMEHV
 RKVQKQASMEEVFHRQASLKKLAARQTRPVQVAPRPEALAKSPCPSPGIRRGSENSSSEGGALRRGP
 YRRAKSEMSESRQGRGSAGEEESLAILRRHVMSLEL DTERAYVEELL CVLEGYAAEMDNPLMAHLLSTG
 LHNKDKVLFNMEEIYHFHNRIFLRELENYTDCPELVGRCF LERMEDFQIYEKYCQNKPRSESLWRQCS
 CPFFQECQRKLDHKLSDSYLLKPVQRITKYQLLLKEMLKYSRNCGAEDLQEALSSILGILKAVNDSMH
 LIAITGYDGNLGD LGKLLMQGSFSVWTDHDKRGHTKVKELARFKPMQRHLFLHEKAVLFCCKREENGEY
 KAPSYSYKQSLNMAAVGITENVKGDACKFEI WYNAREEVYIVQAPTPEIKAAWVNEIRKVLTSQLQACRE
 ASQHRALEQSLSLPLPAPTSTSPSRGNSRN IKLEERKTDPLSLEGYVSSAPLTKPPEKGGKWSKTS
 SHSL EAPEDDGGWSSAEQINSSDAEEDGGLGPKKLVPGKYTVVADHEKGGPDALRVRSGDVVELVQEGDEGL
 VYRDPTTGKEGWVPASSLSVRLGPSGSAQCLSSSESSPGSAVLSNSSSCSEGGQAPFSDLQG

TRTRPLEQKLISEEDLAANDILDYKDDDDKV

Chromatograms: https://cdn.origene.com/chromatograms/mk8031_f11.zip

Restriction Sites: SgfI-MluI

Cloning Scheme:

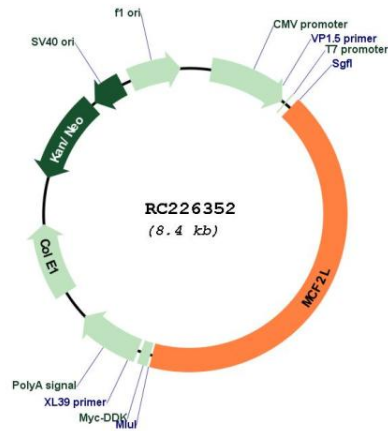


ACCN: NM_001112732

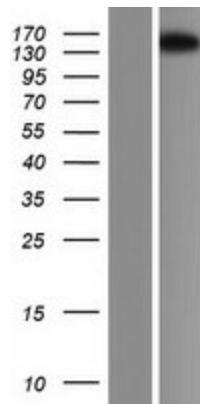
ORF Size: 3546 bp

OTI Disclaimer:	The molecular sequence of this clone aligns with the gene accession number as a point of reference only. However, individual transcript sequences of the same gene can differ through naturally occurring variations (e.g. polymorphisms), each with its own valid existence. This clone is substantially in agreement with the reference, but a complete review of all prevailing variants is recommended prior to use. More info
OTI Annotation:	This clone was engineered to express the complete ORF with an expression tag. Expression varies depending on the nature of the gene.
Components:	The ORF clone is ion-exchange column purified and shipped in a 2D barcoded Matrix tube containing 10ug of transfection-ready, dried plasmid DNA (reconstitute with 100 ul of water).
Reconstitution Method:	<ol style="list-style-type: none">1. Centrifuge at 5,000xg for 5min.2. Carefully open the tube and add 100ul of sterile water to dissolve the DNA.3. Close the tube and incubate for 10 minutes at room temperature.4. Briefly vortex the tube and then do a quick spin (less than 5000xg) to concentrate the liquid at the bottom.5. Store the suspended plasmid at -20°C. The DNA is stable for at least one year from date of shipping when stored at -20°C.
RefSeq:	NM_001112732.1 , NP_001106203.1
RefSeq ORF:	3378 bp
Locus ID:	23263
UniProt ID:	O15068
Cytogenetics:	13q34
MW:	131.2 kDa
Gene Summary:	This gene encodes a guanine nucleotide exchange factor that interacts specifically with the GTP-bound Rac1 and plays a role in the Rho/Rac signaling pathways. A variant in this gene was associated with osteoarthritis. Alternative splicing results in multiple transcript variants. [provided by RefSeq, Mar 2016]

Product images:



Circular map for RC226352



Western blot validation of overexpression lysate (Cat# [LY426377]) using anti-DDK antibody (Cat# [TA50011-100]). Left: Cell lysates from untransfected HEK293T cells; Right: Cell lysates from HEK293T cells transfected with RC226352 using transfection reagent MegaTran 2.0 (Cat# [TT210002]).